

(Continued from Page 48)

memorized Bible passages and stories and were judged on enunciation, motions and how well we had memorized the assigned portions, so I think that helped."

As 4-H queen, Kim says, "My message will be one of friendship towards others. Be a friend at all times. I will also encourage people to join 4-H because I feel it is very worthwhile." Kim says she will stay in 4-H "as long as I can."

Kim will be a freshman at Solanco High School and will be in the girls glee club, and "if there is a play I want to try out for it."

She is a member of the Mechanics Grove Mennonite Church and participates in their youth group.

Kim, too, comes from a very musical family, all of whom enjoy singing. She said, "We four girls sing together." Their music is primarily gospel and folk. Kim sings with the Solanco Community Singout which her sister Kay directs, and she plays the autoharp.

Her ambition is to attend Eastern Mennonite College. "I want to be a nurse because it will mean helping people. I would like to work in the nursery because I love children."

In the meantime Kim keeps busy by reading, working on ceramics and candles, crocheting and quilting. Her samples of this wide variety of handiworks are all professional looking. Her attitude toward these crafts is easily expressed when she talks about quilting. "It's easy," she says nonchalantly. "All you do is roll paper around a toothpick or a pin."

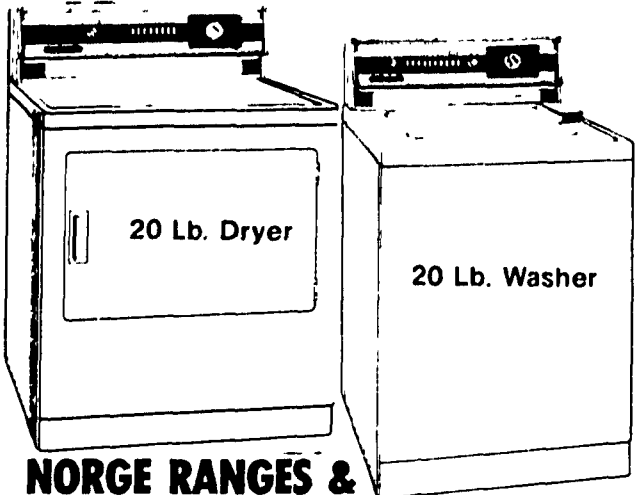
Kim also makes it clear that she enjoys working and being busy. Her mother says, "She is always ready to try something new." She helps with the housework, and "really enjoys cooking." This year she made jelly for her mother. Sewing is another of her talents and she sewed the dress she wore for the contest.

She also lists her steer as something she enjoys working on in her spare time.

The 4-H queens have already appeared on WGAL-TV's Noonday on Eight, and are scheduled to appear in several area fair parades. Kim says they will do "whatever we are called to do."

Both Kim and Patsy display a great deal of poise. They are attractive, and well spoken and will surely win friends and new members for Lancaster County's 4-H clubs during their reign.

Save \$100. on NORGE PAIR



NORGE RANGES &
FREEZERS IN STOCK

TOM B. MORRISSEY
ELECTRONIC SERVICE

Rt. 501 Between Schaefferstown and Myerstown
On the Square in Reistville
PHONE: 717-949-3006

OPEN: Monday thru Friday - 9 to 9; Saturday 9 to 2

STOLTZFUS MEAT MARKET

Our Own Beef
Right From The Farm

—FRESH BEEF AND PORK—

OUR OWN HOME MADE
SCRAPPLE & FRESH SAUSAGE

Bacon and Country Cured Hams
Orders taken for freezer
Meats — Custom Butchering

PH. 768-3941

Directions: 1 block east of Intercourse
on Rt. 772

Reg. Hours: Thurs. 9-5; Fri. 9-8; Sat. 9-5



LOWE'S \$10,899.



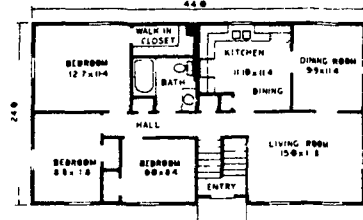
"Contemporary"



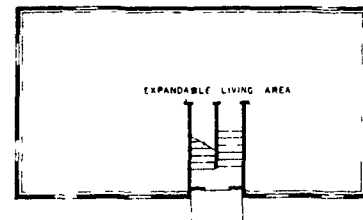
"Colonial"

A Distinctive Split Foyer Home... Planned For Expansion

UPPER LEVEL
1050 SQUARE FEET



Optional Lower Level
Finish Materials Let
This Home Expand To
Fill Your Future Needs.



The Buccaneer Homestead package includes all materials from the foundation plate up to completely finish the upper story, which includes 3 bedrooms... full bath... kitchen... dining room... and large living room with wrought iron railing overlooking the entry foyer. And the unfinished lower level is yours to grow with! When finished, it doubles the home's living space — and it's yours to finish any time and any way you like. As an option, Lowe's will furnish the materials to complete the lower level — now or any time in the future.

Not A Pre-Fab!—Not A Shell House!

The Buccaneer is neither a pre-fab nor a shell house, but a complete materials package to build this attractive split-foyer home in either Colonial or Contemporary style. The materials include all lumber... paint... paneling... carpet... plumbing... electrical supplies... electric baseboard heat... everything! And the materials furnished will meet or exceed the minimum property standards of FHA. Any changes to meet local or state building codes may alter the price accordingly. The Buccaneer gives you 1,050 sq. ft. of heated living space and another full 1,050 sq. ft. of space to expand with. So, whatever you do with the lower level, this is a home you build exactly the way you want to. Let us show you the many options!

MAIL TO:

LOWE'S OF LANCASTER
1107 ENTERPRISE RD.
EAST PETERSBURG, PA 17520

NAME _____

ADDRESS _____

PHONE _____

ZIP _____

* Price Includes All The Materials
From The Foundation Plate Up To
Complete The Upper Level
Of This Home.

Farm Women Calendar

Saturday, Sept. 13
Society 25 meeting for an
anniversary banquet at
Historic Strasburg 6:00
p.m.

Society 7 meeting at 2:00
p.m.
Society 19 meeting at 1:30
p.m.

Sunday, Sept. 14
Society 31 family picnic.

Monday, Sept. 15
Society 30 meeting at 7:00
p.m.

p.m. at Gimmel's com-
munity Room.
Society 29 meeting for a
white elephant sale 7:30
p.m.

Saturday, Sept. 20
Society 12 meeting at 1:00
p.m. at Marian Glick's.
Society 18 meeting at 1:30
p.m. for bake sale.

Society 3 meeting at 1:30
p.m.
Society 8 meeting at 2:00
p.m.



FIREPLACES

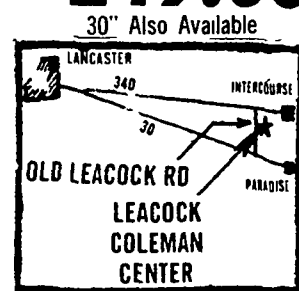


The Ben Franklin Stove can be used with coal, wood or charcoal. Or, you can order it with realistic oak or birch gas-fired logs for automatic comfort and convenience. Our modern version of this old favorite includes accessories for barbecue cooking. Grill steaks or barbecue meats on the adjustable swing-out grill during any season of the year. The Ben Franklin Stove may be an old idea, but you'll find it offers a new way of life.

26" FIREPLACE **\$249.00**

STORE
HOURS:

MON. thru SAT.
8 to 5
TUES. & FRI.
till 8:30



LEACOCK Coleman Center

85 Old Leacock Rd. R.D.1 Ronks, Pa.