

Local Livestock Market, Auction News

Pa. Auction Summary

Week Ending August 29, 1975

CATTLE 8351. Compared with 8168 head last week, and 7448 head a year ago. Compared with last week's market, slaughter steers uneven, mostly steady to \$2 higher, with some sales 50 cents lower. Slaughter heifers mostly steady to \$1 higher. Slaughter cows mostly steady to 25 cents lower. Slaughter bullocks steady to \$2 higher. Slaughter bulls steady to 50 cents higher.

STEERS: High Choice & Prime 51.00-54.75, Choice 47.00-53.00, Good 40.00-46.00, Standard 32.00-40.00, Utility 22.00-29.50. **HEIFERS:** Choice 39.00-45.00, Good 33.00-39.00, Standard 23.00-34.00, Utility 20.00-25.00. **COWS:** Utility & High Dressing Cutter 22.00-25.00, Cutters 20.00-23.25, Canners 17.00-20.50, Shells down to 13.00. **BULLOCKS:** Choice 34.50-42.00, few to 49.00, Good 30.00-36.00, Standard 27.00-28.75, Utility 21.00-27.00. **BULLS:** Yield Grade No. 1 1000-2000 lbs. 26.00-32.00; yield grade No. 2 900-1600 lbs. 23.50-29.00. **FEEDER CATTLE:** Few Choice 300-800 lbs. feeder steers 30.00-35.00, Good 300-700 lbs. 23.00-30.00, Medium 300-700 lbs. 17.00-23.00; Good 275-700 lbs. feeder heifers 18.50-24.50, Medium 250-650 lbs. 14.00-22.00; few Good 300-600 lbs. feeder bulls 20.00-28.00,

Medium 300-750 lbs. 17.00-23.00.

CALVES 5228. Compared with 5164 head last week, and 4845 head a year ago. Vealers grading Good & Choice steady to \$2 higher, Utility & Standard steady to weak, spots \$3 lower.

VEALERS: Few Prime 60.00-65.00, Choice 48.00-60.00, Good 38.00-50.00, Standard 28.00-40.00, Utility 110-130 lbs. 22.00-33.00, 90-120 lbs. 17.00-25.00, 65-85 lbs. 12.00-18.00. Farm calves, holstein bulls 90-120 lbs. 18.00-30.00.

HOGS 7531. Compared with 7526 head last week, and 8211 head a year ago. Barrows & Gilts mostly steady to 50 cents higher.

BARROWS & GILTS: US No. 1-2 200-240 lbs. 60.25-60.75, few to 62.00, No. 1-3 200-250 lbs. 59.25-60.25, No. 2-3 190-260 lbs. 58.00-59.25, No. 2-4 230-300 lbs. 53.00-58.00, No. 1-3 130-180 lbs. 47.00-57.00. **SOWS:** US No. 1-3 275-550 lbs. 45.00-54.00, No. 2-3 300-600 lbs. 42.00-49.00. Boars 35.00-46.00.

FEEDER PIGS 1707. Compared with 1596 head last week, and 1620 head a year ago. US No. 1-3 20-35 lbs. feeder pigs 20.00-42.00 per head, No. 1-3 35-50 lbs. 29.00-50.00, No. 1-3 50-100 lbs. 45.00-60.50, Utility 15-35 lbs. 13.00-30.00 per head.

SHEEP 1140. Compared with 1018 head last week, and 908 head a year ago. Spring

slaughter lambs highly uneven. Choice 70-110 lbs. spring slaughter lambs 38.00-43.00, few to 46.00, Good 60-100 lbs. 27.00-40.00, Utility 40-80 lbs. 15.00-25.00, few to 30.00. Slaughter ewes 5.00-19.00.

LANCASTER FEEDER CATTLE

Friday, Aug. 29

Feeder Cattle Today 617 Last Friday 672

TREND: Feeder steers 50-1.00 lower, instances 2.00 lower on Good and Choice over 800 lb.

FEEDER STEERS: Choice 850-1065 lb. 33.75-34.25; mixed Good and Choice 975-1160 lb. 30.00-33.10, mixed Good and Choice 650-800 lb. 28.00-33.00; Good 460-840 lb. 23.50-28.00; Standard and Good 400-750 lb. 18.75-22.50.

Carlisle

Carlisle, Pa.

September 2, 1975

CATTLE 247. Compared with last Tuesday's market, slaughter cows mostly steady to \$1 higher, spots \$1.50 higher. Individual Good slaughter steer at 40.10, Standard 32.10-39.25, two Utility 26.10 and 28.10. Few Choice slaughter heifers 37.50-40.00, few Good 33.25-36.25, one Standard at 33.10. Utility and High Dressing Cutter slaughter cows 22.00-24.00, few to 24.75, Cutters 19.75-22.25, Canners 18.00-19.75, Shells down to 12.00. Standard slaughter bullocks 23.75-28.00, few Utility 20.10-24.35. Individual Yield Grade No. 1, 1645 lbs. slaughter bull at 28.75, two Yield Grade No. 2, 1515 and 1580 lbs. 28.75 and 29.00.

CALVES 146. Vealers grading Standard uneven, Utility strong to \$5 higher. Couple Choice vealers at 51.00, Good 38.00-48.50, Standard 29.50-38.50, Utility 90-120 lbs. 20.00-27.50, 65-85

lbs. 16.00-20.00. Farm Calves: Holstein bulls 90-125 lbs. 21.50-31.50; few Beef cross bulls and heifers 90-120 lbs. 23.00-37.50.

HOGS 222. Barrows and gilts mostly 50 cents to \$1 higher. US No. 1-2 200-235 lbs. barrows and gilts 59.75-60.35, No. 1-3 190-240 lbs. 59.00-60.10, No. 2-3 185-260 lbs. 57.10-59.00, few No. 2-4 270-375 lbs. 50.00-57.60, few No. 1-3 110-185 lbs. 40.00-50.00. US No. 1-3 315-545 lbs. sows 42.50-51.00. Boars 40.00-41.75, few (light weights 30.00-48.00).

FEEDER PIGS 278. US

No. 1-3 25-35 lbs. feeder pigs 26.00-32.00 per head, No. 1-3 35-50 lbs. 34.00-41.00, lot Utility 25 lbs. at 20.50 per head.

SHEEP 17. Couple Choice 80 and 90 lbs. spring slaughter lambs 33.50-39.50, few Good 65-80 lbs. 26.50-33.00, lot Utility 55 lbs. at 22.00. Few slaughter ewes 8.50-12.50.

Baltimore USDA Report

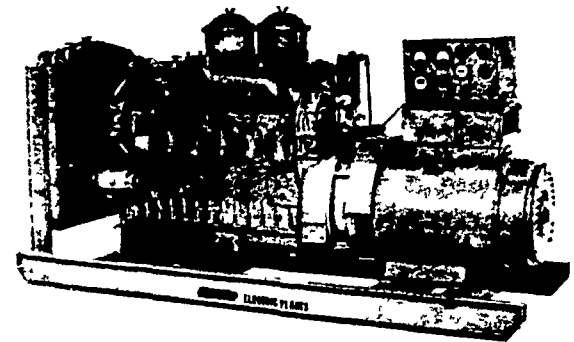
Due to holiday no market report issued.

Electric Generating Systems

Built to Your Specifications

Manual or Automatic

L. P. Gas — Diesel — Gasoline —



Sales - Service

Martin Electric Plants

Isaac W. Martin, Owner
Pleasant Valley Rd., RD2
Ephrata, PA (717) 733-7968

IN STOCK at the old price

D-100 pickups 1/2 and 3/4 ton
Club Cabs 1/2 and 3/4 ton
Vans — Short - Medium - Long
Ready for Immediate Delivery

PETTICOFFER DODGE, INC.

Route 230 East, Next to Shopping Center Elizabethtown, Pa. PH. 367-1808

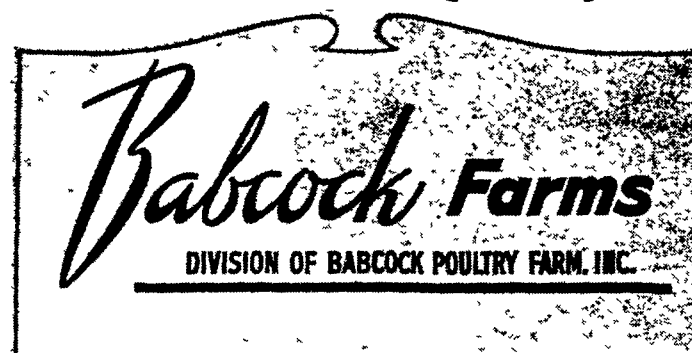


Janet Basehoar

The friendly voice our customers hear when they call Babcock Farms is Mrs. Janet Basehoar. Janet is a 8 year employee of Babcock Farms.

Mrs. Basehoar is responsible for the compiling and computation of many of the records we keep at Babcock Farms. An important section of Janet's work is the billing of invoices to our customers. Janet is another of the quality people employed at Babcock Farms. Good people to do business with.

"The Sign of Quality"



Our 1975 model Babcock B-300 layer is the best layer we have produced at Babcock Farms The 1975 B-300 is superior to previous B-300 layers in two important profit traits.

1. Less Feed per Dozen Eggs
2. More Marketable Eggs per Bird

Improvements in these two critical profit traits are meaningful to you, our customers. Our Babcock layer gives you the opportunity to make money. Take this opportunity today, order your next chicks or started pullets from Babcock Farms. You will like doing business with us.



P.O. BOX 285 LITITZ, PENNSYLVANIA 17543 TELEPHONE (717) 626-8561

