

Canning center is

Continued from Page 45

Judy Stover, representing the Consumer Service for the Commonwealth and acting supervisor for the Center explained its beginning. "We had received literature to the effect that other states were trying the community canning centers and we thought that perhaps we could give it a try." "The center is a research project under the Bureau of Rural Affairs," Mrs. Stover explained, "and we are

really trying to determine the feasibility of canning at such a center compared to the home canning." Commenting on the reaction, area residents have shown, Janet Fortna, supervisor assistant, noted, "the reactions have been good." "We've had about 10 different individuals in to can since we opened a day ago which we think is pretty favorable."



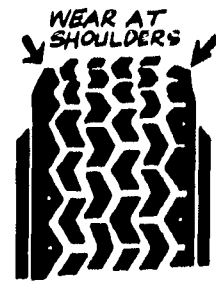
Large cooking kettles is one of the specialized pieces of equipment available at the canning center. Mrs. Janet Fortna, assistant supervisor for the facility, gives a batch of spaghetti sauce a stir.

Jane Honigman, home economist at the Center, explained that there were still many adjustments to be made but things were running pretty smoothly. "Just getting started we still have some things to get yet, but we're doing well." The Department of Agriculture has announced that the Center will remain open as long as there is sufficient demand for it. The facilities will be open six days a week from 9:00 a.m.-4:30 p.m. with supervisors on hand to help with the preserving. Although the center is well equipped to allow several people to can at one time,

appointments must be made before coming to the facilities. Appointments can be made by calling 717-274-2031. Any state resident is welcome to use the Center to aid in their home canning.

Did you know you could actually lose up to 10,000 miles of tread life in one busy day of extremely bad driving? Tire testing experts have done it with continuous jackrabbit starts, screeching turns and panic stops, which can rub and peel off thousands of miles of tread life prematurely. Drive intelligently.

Auto Service Tips



UNDERINFLATION



OVERINFLATION

CHECK YOUR OWNER MANUAL FOR PROPER TIRE INFLATION FOR THE BEST TREAD WEAR, MAXIMUM TRACTION AND RESISTANCE TO DAMAGE.

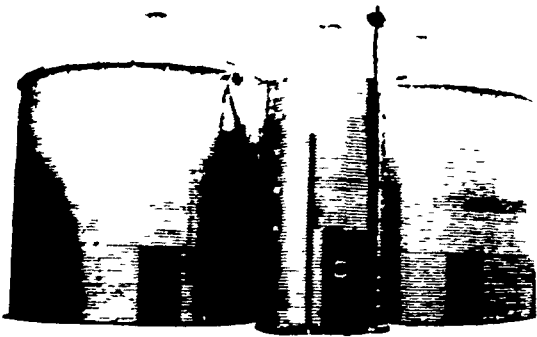
DON'T WAIT

BAUGHMAN

If you're looking for a low price, quality bin - THIS IS FOR YOU

GRAIN STORAGE BINS

Our price is right - See us NOW! Available for Immediate Delivery



Baughman Grain Bin has been designed with you as a grain farmer in mind. Construction (outstanding) Heavy galvanized sheets, tighter than most bins.



SHENK'S FARM SERVICE

RD4, LITITZ, PA

PHONE 626-1151

LP GAS

GOES WHERE IT'S NEEDED

Keep your fuel bills at a minimum by the use of "L-P GAS" wherever power is needed. Many farmers and ranchers have and are converting their equipment to use L-P Gas, it also cuts the costs of repair bills to a minimum. Start today and save.

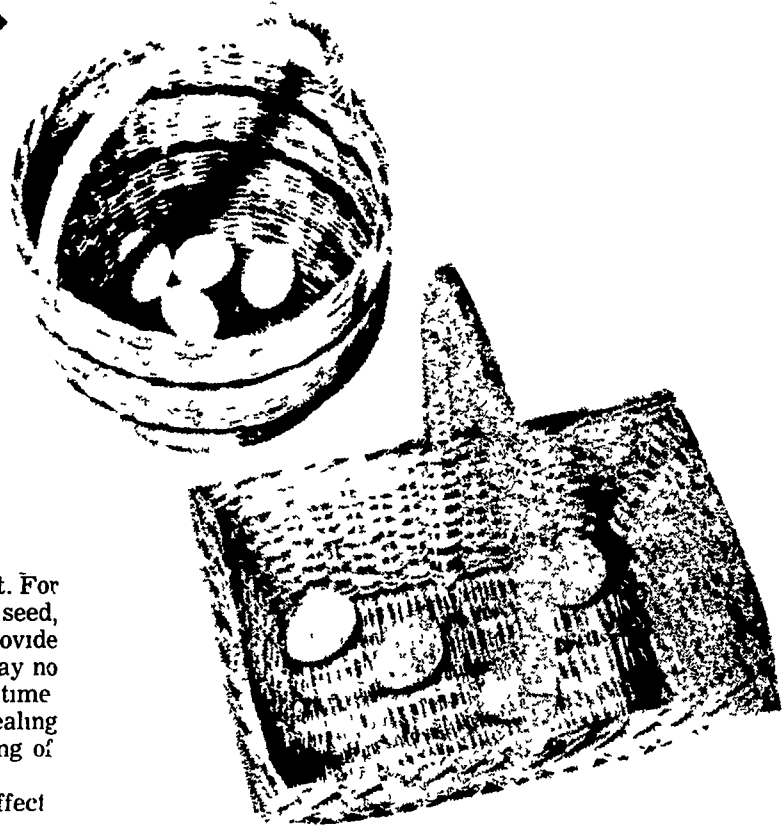
CALL (717) 665-3588

MYER'S METERED GAS SERVICE, INC.

P. O. BOX 71
MANHEIM, PA 17545

FARM CREDIT SERVICE

There is a time when
it doesn't pay to
have your
eggs in too many
baskets.



There are certain advantages to be gained by centering your farm credit needs at Farm Credit. For example, if your plans for the year ahead include a new piece of equipment, spring fertilizer and seed, and perhaps an improvement to your farm home, you can arrange now for a Farm Credit loan to provide the total amount you will need. You can draw on these funds as you need the money. You will pay no interest until the money is actually in use. And then, only on the actual amount in use at any given time. In addition, by centering all your credit needs at Farm Credit, you will have the convenience of dealing with one source, the security of knowing cash will be available when needed, plus the cost-saving of Farm Credit's reasonable interest charges.

Why not discuss your plans with Farm Credit now. Then when the time comes to put them into effect the necessary funds will be waiting for you.



FOR MORE INFORMATION,
CONTACT YOUR LOCAL COUNTY OFFICE.

