

HOG PRICES

Lancaster Market

Monday, August 18
HOGS: Barrows and Gilts 50 lower.
BARROWS AND GILTS: US 1 205-240 lbs. 60.50; US 1-2 200-240 lbs. 59.75-60.00; US 1-3 200-255 lbs. 59.00-59.60.

Vintage Auction

August 16, 1975
HOGS 396: Compared with last Wednesday's market. Barrows & Gilts: steady to 25c higher. US No. 1-2 200-240 lbs. 60.00-60.60, No. 1-3 200-250 lbs. 59.60-60.10, No. 2-3 250-300 lbs. 55.00-58.50, No. 1-3 155-175 lbs. 51.00-57.00. US No. 1-3 300-360 sows 48.00-49.00. Boars, few 38.00-52.00, all weights.

August 16, 1975
HOGS 663: Compared with last Saturday's market. Barrows & Gilts: \$1 to \$1.50 higher. Few US No. 1-2 195-225 lbs. 60.50-60.60, No. 1-3 200-225 lbs. 59.85-60.35, No. 2-3 185-265 lbs. 58.75-59.00, few No. 1-3 150-180 lbs. 45.00-53.75. US No. 1-3 390-575 lbs. sows 48.00-49.50. Boars: 40.85-42.00.

Lancaster Auction

Wednesday, August 20
HOGS: Barrows and gilts steady to 50 higher.
BARROWS AND GILTS: US 1 200-240 lb. 60.00-60.50; US 1-3 200-255 lb. 59.50-60.00.

Leb. Valley Auction

HOGS 509. (Supply included 42 head 4-H & FFA Show Hogs.) Barrows and gilts steady to 25c higher. US No. 1-3 200-235 lbs. barrows and gilts 59.60-60.35, one lot at 60.85, No. 2-3 190-225 lbs. 59.10-59.60, few No. 2-4 250-295 lbs. 52.25-55.10, No. 1-3 65-185 lbs. 50.00-58.25. US No. 1-3 300-500 lbs. sows 44.00-48.50. Boars 36.50-43.25.

FEEDER PIGS 5. Not enough of any one grade to establish a market.

New Holland Auction

August 18, 1975
HOGS: 1485: Compared with last Monday's market. Barrows & Gilts: 25c to 50c, spots \$1 higher. US No. 1-2 200-240 lbs. 60.25-60.75, No. 1-3 200-250 lbs. 59.75-60.25, No. 2-3 190-260 lbs. 58.00-59.75, No. 1-3 150-190 lbs. 58.00-59.75. US No. 1-3 300-575 lbs. sows 43.00-49.75. Boars: 42.25-54.00.

St. Louis Auction

Thursday, August 21
HOGS: 3500, rather slow early, closing fairly active, steady to 25 lower.
 US 1-2 near 100 head 210-240 lbs. 59.00; US 1-3 200-250 lbs. 58.50-58.75.

Peoria Auction

Thursday, August 21
HOGS: 2500, steady to 25 higher, moderately active.
 US 1-2 200-240 lbs. 59.00-59.25; 1-3 200-240 lbs. 58.50-59.00.

Indianapolis Auction

Thursday, August 21
HOGS: 1000, fairly active, compared to early Wednesday, steady to 25 lower, or fully steady with Wednesday's close.
 US 1-3 200-245 lbs. 58.75-59.25.

Baltimore USDA Report

USDA — Not received in time for publication.

Lancaster Feeder Pigs

Tuesday, August 19
Feeder Pigs
 Today 1419
 Two Weeks Ago 1524
TREND: Compared to two weeks ago, Feeder pigs active, 5.00-10.00 higher; all prices on a per-hundred basis.
 US 1-2 55 head 46-49 lb. 124.00-126.00; 59-64 lb. 104.00-113.00; 40 head 65 lb. 100.50; 31 head 81 lb. 93.00.
 US 2 40-49 lb. 115.00-125.00; 50-57 lb. 107.00-121.00.
 US 2-3 33-40 lb. 117.00-130.00; 50-56 lb. 105.50-111.00; one lot 74 lb. 88.00.
 US 3 21-22 lb. 136.00-139.00; 27-36 lb. 122.00-136.00; 39-46 lb. 100.00-116.00; 56-57 lb. 99.00-106.00; 62-76 lb. 87.00-97.00.
 Utility 15-37 lb. 106.00-111.00; 46 head 22-23 lb. 123.00-132.00; one lot 53 lb. 99.00.

HAY MARKETS

New Holland

August 18, 1975
Prices Per Ton
 33 loads hay & 15 loads straw.
 Alfalfa, 2 loads at 75.00; Timothy, 2 loads 65.00 and 80.00; Mixed hay 56.00-72.50, one down to 32.00; Hay, one load at 45.50; Straw 40.00-44.50, few loads 32.00-39.50; Corn, 21 loads 72.00-88.00, 2 loads 66.00 & 69.00; Shredded Wood, \$16 per ton.

Regional

Hay prices for Southeastern & So. Central Pennsylvania
 Hay prices for Southeastern & So. Central Pennsylvania.
 (All hay No. 2 and better, prices paid by dealers at the farm, price per ton.)
 Hay & Straw steady to strong.
 Alfalfa 60.00-70.00; Mixed hay 45.00-55.00; Timothy hay 40.00-50.00; Straw 30.00-35.00; Mulch 15.00-25.00.

Paul Z. Martin

Wednesday, Aug. 20
 20 loads of hay, straw and ear corn sold as follows:
 Alfalfa 87; Timothy 68 to 74; Clover 54 to 70; Mixed Hay 31 to 85; Straw 35 to 52; Corn 1 load 79.

Green Dragon

August 15, 1975
Prices Per Ton:
 38 loads hay & 20 loads straw.
 Alfalfa, few loads 66.00-73.00; Timothy, few loads 46.00-67.00; Mixed hay 45.00-72.00; Clover, couple loads 60.00 & 70.00; Straw 36.00-44.50; Corn, 26 loads 74.00-83.00; Corn Screenings, one load 65.00; Soybeans, one load \$4.75 per bushel; Oats, one load \$1.55 per bushel; Rye, one load \$2.40 per bushel; Soybean Meal, one load \$169.00 per ton; Shredded Wood, one load 22.00 per ton.

Futures Trading

(Closing bids as of Thursday, August 21)

	Chicago Cattle	Chicago Hogs	New York Maine Potatoes	Chicago Fresh Eggs
September				53.05
October	43.60	52.70		54.00
November			8.44	59.30
December	43.70	52.30		63.50
January 1976				60.25
February	44.20	51.80		57.00
March			11.00	
April	44.70	49.00	12.06	
May			13.78	

Trend — Cattle are Stronger, Hogs are Stronger, Potatoes are Stronger, and Eggs are Weaker.
 Markets Provided by Commodity Department Reynolds Securities, Inc.

Chicago Grain Futures

(Closing bids as of Thursday, August 21)

	Corn	Wheat	Soybeans	Soybean Meal
September	3.22	4.47	6.12	152.50
October				152.00
November			6.19	
December	3.21¼	4.59		157.50
January 1976			6.30	159.50
March	3.29	4.73½	6.38	164.00
May	3.32½	4.76	6.45	

Trend — Corn is Weaker, Wheat is Stronger, Soybeans are Weaker, and Soybean Meal is Weaker.
 Markets Provided by Commodity Department Reynolds Securities, Inc.

U. S. Inspected Livestock Slaughter

Estimated Daily Livestock Slaughter Under Federal Inspection

	CATTLE	HOGS	SHEEP
Week to Date	552,000	861,000	120,000
Same Period Last Week	556,000	930,000	115,000
Same Period Last Year	473,000	1,091,000	138,000

LANCASTER FEEDER CATTLE

Friday, August 15
Feeder Cattle
 Today 762
 Last Friday 938
TREND: Insufficient volume of Choice to test trend, other grades moderately active, firm.

FEEDER STEERS: Few lots Choice 825-875 lbs. 37.25-38.10; mixed-Good and Choice 700-900 lbs. 30.00-32.75, few lots 950-1000 lbs. included; Good 400-600 lbs. 23.00-27.75, lot 426 lbs. 29.10, 600-850 lbs. 24.10-27.10, 850-1000 lbs. 26.50-31.00; few lots Standard and Good Holsteins 17.50-21.10; few lots Good 400-700 lbs. Bull Calves 19.75-24.75.

FEEDER HEIFERS: Couple lots Choice 190-225 lbs. 21.50-23.50, 370-450 lbs. 18.00-18.75.

A DAY'S WORK FOR A DAY'S WAGES

Our men begin and end every day with the same thought: working as hard and honestly for you as is humanly possible. We are proud of our work record with fat and feeder cattle and also with fat hogs and feeder pigs.

J. M. HOOBER INC.

Save 25c on every head of feeder pigs. We supply free state tags.

Next feeder pig sale September 2.

Lancaster Stockyards

PLEASE CALL US SOON
 Phone (717) 397-6191,
 569-2084, 626-5659.

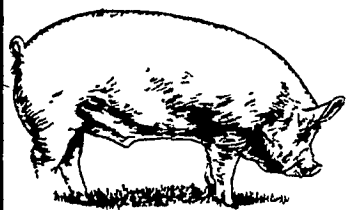
FORTY-ONE YEARS OF SERVICE . . . to the farmer, to the dealer and to the packer.

May we serve you?

S. K. SHOTZBERGER, INC.

LIVESTOCK TRANSPORTATION

Gene Zwally, President
 Marvin Johns, Secy-Treasurer
 P.O. Box 925, Lancaster, Pa. 17604
 Phone: 393-4641 (day or night)



NEXT FEEDER PIG SALE

TUESDAY, SEPTEMBER 2



Consign all your feeder pigs to Walter M. Dunlap & Sons where they will be handled by a capable and experienced staff.

WALTER M. DUNLAP & SONS

LANCASTER STOCK YARDS

Consignors can get state tags at our office, thereby saving 25c marketing expense.

For Further Information, Call 717-397-5136



FOR BETTER NET RETURNS

SHIP TO THE

DANVILLE LIVESTOCK MARKET

Old Rt. 11 Danville, Pa.
 Phone (717) 275-2880

SALE EVERY MONDAY 2 P.M.

OWNERS

Charles C. Myers
 (717) 569-2106

Melvin M. Lehman
 (717) 964-3621