

Poultry Market Reports

WEEKLY NEW YORK EGG MARKET

	Monday, August 4 to Friday, August 8				
	Mon.	Tues.	Wed.	Thurs.	Fri.
WHITE					
Ex. Large	62	62	62	62	62
Large	58	58	58	58	58
Mediums	47	47	47	47	47
Pullets	36	36	36	36	36
Peewees	26	26	26	26	26
BROWN					
Large	64	64	67	67	67
Mediums	Unquoted				
Pullets	Unquoted				
Peewees	Unquoted				
Off Grade					
Large	52	52	52	52	52
Checks	34	34	34	34	34

Tone — About Steady.
Copyright 1975 Urner Barry Publications

Carlisle Livestock

Carlisle, PA August 7, 1975
CATTLE 237. Compared with Tuesday's market, slaughter cows steady, mostly 50c lower. Low Choice slaughter steer at 42.85, few Good 39.00-41.00, Standard 29.00-39.25, few Utility 21.00-26.50. Two Choice slaughter heifers 39.00 and 42.10, few Good 29.25-34.85, few Standard 23.00-28.00, few Utility 21.00-22.35. Utility & High Dressing Cutter slaughter cows 20.50-23.25, Cutters 19.00-21.25, Canners 18.00-19.50, Shells down to 12.00. Two Standard slaughter bullocks 24.25 and 25.25, two Utility 22.10 and 22.25. One Yield Grade No. 1 1330 lbs. slaughter bull at 24.50.
CALVES 211. Vealers mostly \$1 lower. One Choice vealer at 50.00, one Good at 40.00, Standard 32.00-40.00, Utility 90-120 lbs. 23.00-27.00, 65-85 lbs. 18.00-23.50. Farm calves, holstein bulls 90-130 lbs. 26.00-35.50.
HOGS 215. Barrows & Gilts fully \$2 lower. US No. 1-2 200-225 lbs. barrows & gilts 58.50, No. 1-3 200-235 lbs. 57.35-58.10, No. 2-3 185-235 lbs. 56.85-57.60, few No. 2-4 250-300 lbs. 48.00-55.75. Few US No. 1-3 300-510 lbs. sows 48.50-50.00, No. 2-3 350-585 lbs. 44.00-49.25. Few Boars 40.75, few light weights 42.00-52.00.
FEEDER PIGS 182. US No. 1-3 30-50 lbs. feeder pigs 35.00-42.00 per head.
SHEEP 7. Few Good 85-90 lbs. spring slaughter lambs 31.00-34.50, lot Utility 65 lbs. 25.00. One Slaughter ewe at 14.00.

St. Louis Auction

August 7
Weekly Cattle Review
 Receipts 9,000
 Last Week 8,000
 Year Ago 7,700
 As compared to the previous week's close, slaughter steers and heifers mostly 1.00-2.00 lower. Cows steady to firm and bulls steady. Supply mainly mixed good and choice 950-1050 steers with several loads mixed good and choice 700-800 lb. heifers; around 30 percent heifers; 15 percent cows; 20 percent feeders.
SLAUGHTER STEERS: Load and couple lots choice and prime 1100-1200 lbs. yield grade 2-4 49.00 on Monday. Choice 1000-1200 lbs. yield grade 2-4 45.00-47.74, late week sales mostly 45.50-46.50; 900-1000 lbs. yield grade 2-4 44.50-46.00, late week sales 44.50-45.50. Mixed good and choice 900-1050 lbs. 41.00-45.50. Good 37.00-42.00, few 800-900 lbs. 35.00-37.00. Standard to good holsteins 1000-1300 lbs. 34.00-38.00; standard holsteins 27.50-30.00.
SLAUGHTER HEIFERS: Choice 850-1050 lbs. yield grade 2-4 42.00-45.00, late week sales 42.00-43.00. Mixed

NEW ENGLAND WEEKLY SHELL EGG REPORT

Tuesday, August 5, 1975
 Prices paid per dozen Grade "A" brown eggs in cartons delivered to retail stores:

	EX. LARGE	LARGE	MEDIUM	SMALL
MASS+	71-77	68-75	56-68	38-47
Mostly	72-74	69-74	57-59	39-41
NEW HAMP.	69-76	66-72	54-61	36-43
Mostly	71-72	68-69	56-57	38-39
R. I.	71-72	69-70	60-61	42-43
VERMONT	73-76	70-75	58-66	
Mostly	73-75	70-72	58-60	
MAINE	73-76	70-72	58-60	40-42

+ Includes Central and Western Sections Only.

Eastern PA & NJ

Live Hen Report
 Wednesday, August 6
 Prices steady on light type hens. Offerings short of full needs as plants continue part-time operations. Offerings of heavy type hens limited but adequate for light needs.
 Prices paid at farm: light type hens 4-6½, mostly 6 in PA, mostly 5-6 in NJ; Heavy type hens TFEWR.

Delmarva

Broiler-Fryer Market
 Wednesday, August 6
 Ready to cook movement improved in most quarters with last night's clearances good. Slaughter schedules increased in some quarters. Today's less than trucklot asking prices held unchanged on both Plant and US Grade A. Advance interest slow in developing. Live supplies adequate however weights generally lighter than desired as the extreme heat last week slowed growth patterns. Undertone unsettled to steady. Current broiler-fryer negotiated prices for immediate delivery mostly multiple-drop shipments to New York City from Delmarva.
 Range: US Grade A 49-51; Plant Grade 48-50; Premium US Grade A 52-55; Premium Plant Grade 51-53.
 Wtd. Avg.: US Grade A 49.92; Plant Grade 49.15; Premium US Grade A 54.36; Premium Plant Grade 52.90.

good and choice 800-950 lbs. 39.00-43.00, late sales 39.00-42.00; several loads 700-800 lbs. 33.00-38.00. Good 800-950 lbs. 33.50-40.00.
COWS: Utility and commercial 19.00-23.00; cutter 15.00-19.00; canner 12.00-16.00; shelly canner 700-1000 lbs. 11.00-13.00.
BULLS: Yield grade 1-2 1100-1700 lbs. 21.00-25.00.
VEALERS: Mixed good and choice 26.00-31.00.

Fogelsville

Sale of
 Tuesday, August 5
 Prices paid dock weights, cents per pound, except where noted.
 Hens, heavy type 10½-20, mostly 15-20; Pullets 44-49; Roasters 27-40, mostly 40; Ducks 60; Drakes 45-60, mostly 60; Rabbits 10-36, mostly 25-35; Pigeons (per pr.) 1.00-3.51.
 Total coops sold 157.
 Poultry received Monday 7 p.m. to 10:30 p.m., Tuesday 7 a.m. to 12 Noon Sale at 11:30 a.m.
 Directions - Take Rt. 222 thruway. Exit at Fogelsville exit. North to stoplight in Fogelsville, turn left, proceed one mile.

NEST RUN EGGS

Prices are from Egg Clearinghouse, Inc., (ECI) Durham, N.H. and reflect trading prices for gradeable nest run eggs (GNR) on ECI, a nationwide trading center for producer packers and marketers. GNR eggs are classified by weight in 30-dozen cases, and traded in lots of either 300 or 750 cases. Prices are FOB buyers dock, and are computed Tuesday and Thursday of each week. This week's prices for each classification were:

Classification	New Weight Per Case	Tuesday	Thursday
		Extra Large	51 lbs.
Class 1 - Large	48 lbs.	49	48
Class 3 - Medium	42 lbs.	39	38
Class 4 - Small	39 lbs.	31	30
Breaking Stock	48 lbs.	43	43
Checks	48 lbs.	37	37

Philadelphia Eggs

Wednesday, August 6

Prices unchanged. Cartoning demand light and disappointing. Offerings of extra large adequate, large and mediums ample. Undertone nervous and unsettled.

Baltimore Eggs

Wednesday, August 6

Baltimore Eggs: Demand slow to fair. Supplies adequate to ample except for jumbos. Undertone about steady.

Prices to retailers: sales to volume buyers, consumer grades white eggs in cartons, delivered: store door A Extra Large 63-64½; A Large 62-63½; A Medium 49-50½.

Cartoned eggs: prices to retailers, state graded (min one case sale) white: Grade A Large 62-71, mostly 62-65; Grade A Medium 51-60, mostly 51-54.

HIGH PRESSURE WASHING

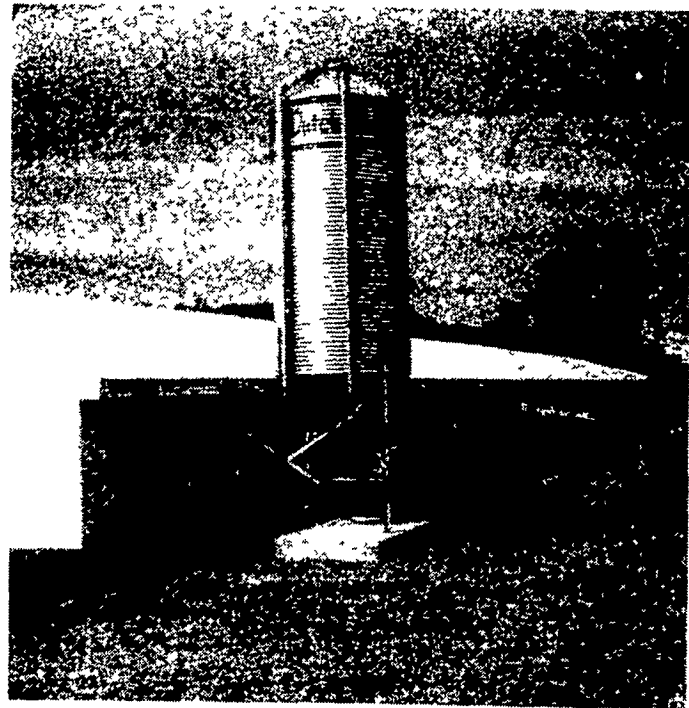
OF POULTRY HOUSES AND VEAL PENS

BARRY L. HERR

1744 Pioneer Road Lancaster, Pa
Phone 717-464-2044

DO YOU NEED BALANCE IN YOUR FARMING OPERATION?

Consider a
BROILER BREEDER HATCHING EGG UNIT
 FOR
LONGENECKER'S HATCHERY, INC.
 ELIZABETHTOWN, PA.



Stanley Saylor, RD1, Elizabethtown, Pa. says that Longenecker's broiler breeder hatching egg program works well with his hog and steer operation. Saylor's two-thirds slatted floor house is specially designed for efficient operation.

CONTACT:
EARL GERLACH - 717-367-1545
 FOR MORE INFORMATION

Lancaster Farming

P.O. Box 266 - Lititz, PA 17543
 Office: 22 E. Main St., Lititz, PA 17543
 Record-Express Office Building
 Phone: Lancaster 717-394-3047
 or Lititz 717-626-2191
 Dieter Krieg, Editor
 Melissa Piper, Associate Editor
 Jack Farmakis, National Sales Manager
 151 Danforth Drive
 New Canaan, Conn. 06840
 Ph. 203-966-1746

Subscription Price: \$3 per year
 Established November 4, 1955
 Published every Saturday by Lancaster Farming
 Lititz, PA
 Second Class Postage paid at Lititz, PA 17543

Members of Newspaper Farm Editors Assn Pa Newspaper
 Publishers Association and National Newspaper Association

