

LOCAL CLASSIFIED ADVERTISING RATES

Use This Handy Chart To Figure Your Cost

Words	(1) Issue	(3) Issues
14 or Less	\$1.4c	\$3.36
15	1.50	3.60
16	1.60	3.84
17	1.70	4.08
18	1.80	4.32
19	1.90	4.56
20	2.00	4.80

KEYED ADS (Ads with answer coming to a Box Number c/o Lancaster Farming) 50 cents additional

Ads running 3 or more consecutive times with no change billed at 20 percent discount

Deadline Thursday of each week's publication

Lancaster Farming
P O Box 266
Lititz, PA
Phone Lancaster 394-3047 or Lititz 626 2191

Farm Equipment

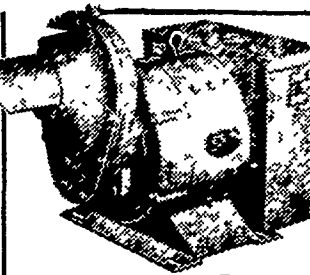
WISCONSIN ENGINES

S12D 12 H.P. Starter, Gen.
AENLD 9 H.P. Clutch, Reduction
VF4 25 H.P. Hand start
VH4 30 H.P. electric start
V465D 65 H.P. New and Rebuilt clutch, reduction and standard.

FISHER ENGINE SERVICE
AMOS. L. FISHER
RD1, Box 108
Bird-in-Hand
PA 17505

Used 2-row 550 Forage Harvester
Kools 56" PTO Blower
Model 100 7 ft. 3pt. Mower
7 H.P. Cadet Tractor w-38" mower

COPE & WEAVER CO.
New Providence
786-7351



Protects Your Farm Against Power Failure

Your profits go down when power goes off! Let us show you how you can protect your family and farm from costly annoying power outages by leasing or buying a Winpower alternator

winpower
"The old reliable"
DISTRIBUTOR
MARVIN J. HORST
Dairy Equipment and Amana Appliances
R.D.#1 (Iona)
Lebanon, PA
Phone (717) 272-0871
Located on Route 897 between Schaefferstown and Lebanon over 30 years in business at same place

FREY BROS. MFG.

QUARRYVILLE, PA PHONE (717) 786-2146

- Farm Gates
- Head Gates
- Calf Creep
- Steel Fence
- Free Stalls
- Loading Chutes [Slop Stops]
- Steel Buildings
- Automatic Wagon Hitch
- Ritchie Waterers
- Electric Gates
- Al Chutes
- Ear Tags
- Feed Bunks
- Hay Racks

WRITE FOR FREE CATALOGS

Farm Equipment

Amish Roller Bearing Buggy For Sale. Aaron J. Glick, Bird-In-Hand R1, Monterrey Road.

MF

Massey Ferguson

NEW EQUIPMENT IN STOCK

(1) MF 300 Crawler Loader
(1) MF 200 Crawler Loader
(3) M.F. 50 A Backhoe Loader
M.F. 11 Wheeled Loader
M.F. 33 Wheeled Loader
M.F. 711 Skid Steer Loader
Gehl 880 Windrower
Gehl 95 Grinder-Mixer
Gehl FB99 Blower
Gehl Forage Box
Lamco Forage Boxes
Kubota 225 Tractors

USED EQUIPMENT SPECIALS

Case 1030 Diesel tractor Int. B tractor
I.H. 300 Tractor w-plow
Caterpillar 22 Tractor
J.D. 3B Mtd. Plow
(1) Cobey 340 Bu. Manure Spreader
Case 6B Semi-mtd. Plow
Case 4B Semi-mtd. Plow
Complete line of new M.F. Lawn Equipment in stock. See us for special prices.

USED CONSTRUCTION EQUIPMENT

(3) Case 580 CK Backhoes
(1) Case 680 CK Backhoe
(1) Case 450 Crawler-Loader
J.D. 450 Crawler-Loader-Backhoe.
Case 750 Crawler Dozer
Schramm 125 CFM Compressor

SPECIAL FACTORY REBATES UP TO \$1500. on all new MF Construction Equipment. Call for details.

LANC. EQUIPMENT CENTER, INC.
P. O. Box 1, Kinzer, PA
Phone 717-442-4186
Lancaster Customers Phone 768-8916

ERB & HENRY EQUIP. INC.

New Berlinville, PA
1 Mile N. of Boyertown

Phone (215) 367-2169

FARM EQUIPMENT

* PARTS & SERVICE
* DeLAVAL DAIRY EQUIP.
* JAMESWAY
* FLICKES SILO
* FMC SPRAY EQUIP.
* BEAN

Farm Equipment

Model 100 7 ft. 3 pt. Mower
10 tooth Chisel Plow
Used 2-row 550 Forage Harvester
7 H.P. Cadet Tractor w-38" mower
Kools 56" PTO Blower

For Sale - Good used 19" Papee cutter with six knives installed. David L. Smoker, Myerstown, R3, Box 363, Pa. 17067.

Wanted - Horse drawn milk wagon. Contact: Frank McDonnell, East Greenville RD1, PA 18041, Call 215-679-6892

MONTGOMERY EQUIPMENT

USED EQUIPMENT

*Melroe 600 Skid Loader
*Late Model Gehl Blower PTO
*Kools Long Table Blower PTO
*J D 50 Side Mower
*Int SOLD conditioner
*New Holland 880 Harvester with Cornhead & Pickup
*Gehl PTO Forage Blower
*CaseSOLD Haybine
*New & Used Elevators in Stock
*Grain Boxes & Wagons
*NH 1469 SP Haybine
*NH 269 Baler w/Thrower
*Harvestore Roller Mill w/12 elec motor
*Badger Forage Box
*Case 450 Bulldozer
*Case D630 Tractor
*D B 990 Dsl Tractor
*A C D19 ISOLD w/4 B Plow
*A C WD45 Tractor & Loader
*A C 480 Blower & Pipe
*Massey Ferguson 200 Bu Spreader
*NH 78 Baler & Thrower
*Ford 8 N
*Case 580 D & Loader
*IH 330 & Loader
*A C 390 Haybine (like new)
*16 ft Cattle Truck Body
*J D 32 ft Field Cultivator (foldup)
*Wisconsin 4 cyl power unit w/starter
*Wisconsin SOLD power unit
*A C 444 Baler w/thrower (like new)
*Ferguson 20 Tractor
*A C Gleaner Combine CII Diesel w/4-30 Corn Head
*J D 2010 Crawler Loader
*Case 310 Crawler Loader
*David Brown 1200 Tractor

CASE AND ALLIS CHALMERS NEW TRACTORS IN STOCK

*D B 990
*D B 1210
*A C 6040 Diesel Tractor
*David Brown 995
*D B 885 G
*A C 185 Diesel Tractor
*Case 1070 w/Cab and Air
*Case 1370 w/Cab & Air

NEW EQUIPMENT IN STOCK

*A C Corn Planters
*13 ft 9 Disc
*14 ft Cultipacker
*13 ft Cultipacker
*13 ft Cultmulcher
*Dion Forage Boxes
*Ontario 16 Disc Grain Drill

NEW HOLLAND IN STOCK

*273 Balers
*276 Baler
*850 Round Baler
*469 Haybines
*519 Spreaders
*676 Spreaders
*790 Spreaders
*8 Crop Carriers
*Pickup Attachments for Harvesters

MONTGOMERY EQUIPMENT

Rt 273 Rising Sun Md
301-658-5568

Immediate Financing
Sales SERVICE
REPAIRS
OPEN 6 DAYS A WEEK
OPEN EVENINGS

classified ads

PHONE 717-394-3047 or 717-626-2191

Farm Equipment

USED EQUIPMENT

G.T. Grain Dryer
12 ft. Miller Disc
Cunningham Hay Conditioner
303 Baler without Thrower
N.H. 280 Baler with Thrower
302 Baler with Thrower
I.H.C. Baler with Thrower
G900 Minneapolis Moline
A.C. 170 Gas Tractor
W.D. 45 Tractor
Int. S.P. Combine
J.D. 7700 Combine with Corn & Grain Heads

GRUMELLI FARM SERVICE
Quarryville
Phone 786-7318

For Sale - Cab for 4020 or 4010 John Deere Tractor. 215-383-7786.

NEW COMPLETE FARM WAGONS

- Side Boards
- Standards
- Steel Wheels
- Board treated flooring also water troughs

STOLTZFOOS WELDING & REPAIR
105 Horseshoe Road
Leola, Pa.
717-656-9119

NEW EQUIPMENT [IN STOCK]

Chisel Plows
Cultipackers
Groves Bale Bodies
McCurdy Grain Bodies
508 4 bottom SAR Plow
348 3 Bottom SAR Plow

NEW EQUIPMENT [BARGAIN PRICES]

Sato Trac 550 Gas 18HP (\$3530-\$3250)
Sato Trac 650 Gas PS 25 HP (\$4670-\$3795)
Gehl 120 Bu Mix-All (\$4380-\$3995)
Gehl BU-910 For Wag & 10T Gear - Tires & Tubes (\$3400-\$2895)
Gehl MC880 Mower Conditioner (\$4200-\$3195)
NI 290 Mow-Ditioner (\$4250-\$3250)
NI 272 Cut Ditioners (\$3025-\$2795)
NI Wheel Rake (\$878-\$800)
NI 109 3 PT Fert Spreader (\$790-\$595)
5 Master 3 PT Rotary Mower (\$650-\$550)
5 Master Pull Type Rotary Mower (\$725-\$595)
5 Master 3 PT - 3 Blade (\$850-\$695)
6 Master 3 PT-3 Blade (\$950-\$695)

USED FARM-EQUIPMENT

6 Arps Blade
MH 44 Tractor
NI 750 Hay Conditioner
NI Wheel Rake
145 BU HB Manure Spreader
3 Bottom 16' Oliver Pull Plow
NI 213 Single Beater Spreader
NI 214 Single Beater Spreader
550 2 Row Int Forage Chopper
34 Little Giant Elevator
Oliver Super 55 Tractor

NEW LAWN & GARDEN EQUIPMENT SPECIALS

HT 20 HP Bolens & 54 Mower (\$3769 \$3175)
QT 16 HP Bolens & 48 Mower (\$2999 \$2495)
Bolens 10 HP & 38 Mower (\$1650 \$1495)
Bolens G-14 HP & 42" Mower (\$2087 \$1875)

USED LAWN & GARDEN EQUIPMENT

1 - Tiller
Hand Mowers
7 HP Bolens Tractor & Mower

CHAS. J. MCCOMSEY & SONS
RD3, Oxford, Pa.
PHONE: [215] 932-2615

Farm Equipment

For Sale - Cardinal 16 ft. transport 6" auger in good condition w-10 ft. screen section, covers for screen, 1 1/2 h.p. electric motor.
Wanted - 16 to 18 disk grain drill in good to very good cond. 653-1826 day, 653-5859 eve.

Cutters and Blowers for High Moisture Grain
Gehl, Farmhand & Oliver. Feedgrinder Mixers, Gravity Bins, Forage Boxes, Blowers, Harvesters, Fox Harvester, Elevators, Grain Crimpers, Corn Pickers, 2 Row Gehl Self Propelled Harvester, Picker Shellers, Brilliant Packer Seeder, Plows, Disc Harrows, Spreaders, Mowers, Rakes, Silo Fillers, 2 Row Sweet Corn Picker, Hi Dump Trailer, Gehl Hi Thro Recutter Blower, Crop Dryer, Grain Drills, Potato Diggers, Road Graders, Trenchers, Pay Loaders, Stump Cutter, Fork Lift, Brush Chipper, Skid Steer Loaders with Backhoes, Tractors with Mowers, Tractors with Loaders and Backhoes. Hundreds of Wheel and Crawler Tractors.

CLYDE E. KEENER
1531 Manheim Pike
Lancaster, Pa. 17601
Intersection of Rts. 72 & 283.
Phone 717-569-9861.

Poultry & Supplies

For Sale - New egg cartons misprints, \$20.00 per thousand picked up. Plain & Fancy Egg Ranch, R3, Elizabethtown, Pa. 717-665-3511.

DEKALB MOYER'S CHICKS, INC.
Quakertown, PA
Ph. 215-536-3155

Now handling the
Dekalb lines

Dekalb-Kimber K-137
Dekalb 231
Dekalb-Warren S. S.

LONGENECKER'S HATCHERY

Box 317, Elizabethtown, PA Ph: (717) 367-1545

DeKalb WARREN SEX-SAL

STARTED PULLETS, 20 WEEKS SEX-SAL

2000 July 29 700 Aug. 26
RUBBARD LEGHORNS
3400 Aug. 26

Farm Equipment

MANURE PITS
36 ft., 48 ft., and 60 ft. diameter. 12 ft. depth, circular precast concrete with gunite coated interior.
ZIMMERMAN INDS. INC.
RD1, Ephrata, Pa. 17522
Phone: 717-733-6166

Farmall M Tractor
A.C. CA Tractor w-cultivators
Ground driven corn binder, like new
PTO Corn Binder w-loader, good.
ELWOOD FLOWERS
Manheim RD2, PA
Phone: 717-653-4839

TRACTOR & MOTOR REPAIRS

Over 20 years experience with Ford tractors and equipment.

Shop & Road Service
Pickup and Delivery

Walt Stively, Jr.
Springville Road
Quarryville RD3
Phone 717-786-2252

Poultry & Supplies

20 Case Per Hour Wyland Grader

D6V 10-12 Case Per Hour Egomatic Candler & Grader

10,000 Used Plastic Flats. Very Reasonable.

Burch Cooler

Call Modern Poultry for information on other used equipment we now have available. For all your poultry needs call Jim Enck, Modern Poultry Supplies, Inc.

Modern Poultry Supplies, Inc.
James J. Enck
717-299-0828
717-397-5850

For Sale - 2000 Shaver's Laying 80 percent, 9 mos. old. 1 mile west of Brownstown, Gideon S. Glick, R1, Leola, Pa. 17540.

SHAVER STARCROSS LAYERS

GREIDER LEGHORN FARMS, INC.
Phone 653-1855
MOUNT JOY RD1, PA