

HOG PRICES

Lancaster Market

July 21, 1975

HOGS: Barrows and gilts 75-1.25 higher.

BARROWS AND GILTS: US 1-2 210-230 lb. 60.50-60.75; US 1-2 200-225 lb. 59.75-60.00; US 2-3 200-260 lb. 59.25-59.75, mostly 59.60, 270-280 lb. 58.25-58.60, 230-285 lb. 57.00-57.50.

Vintage Auction

July 19, 1975

Compared to last week, barrows and gilts steady. US 1-2 59.50-60.00, 1-3 195-250 lbs. 58.25-59.00; 2-4 250-270 lbs. 57.10-58.25; few 1-3 1250-175 lbs. 35.00-45.50. Sows 1-3 300-585 lbs. 41.00-47.50 and boars 39.00-40.25.

July 23, 1975

Barrows and gilts 50-75 cents higher. US 1-2 200-235 lbs. 59.75-60.00; 1-3 59.00-59.50 and sows 46.50-49.00.

Lancaster Auction

July 23, 1975

HOGS: Barrows and gilts steady to strong.

BARROWS AND GILTS: US 1-2 210-235 lb. 59.85-60.10, one small lot US 1 60.75, US 2-3 200-250 lb. 59.50-59.75.

EVERY FRIDAY

FEEDER CATTLE

12 NOON

Lancaster Stockyards, Inc.

Indianapolis Auction

July 25, 1975

HOGS: 1500 Barrows and gilts active, mostly 50 instances 75 higher.

BARROWS AND GILTS: US 1-2 200-230 lbs. 59.50-59.75; US 1-3 200-245 lbs. 59.00-59.50.

New Holland Auction

July 21, 1975

Hogs: 1548 Barrows and gilts 1.25-2.00 higher. US 1-2 200-240 lbs. 59.75-60.25; 1-3 200-240 lbs. 59.25-59.75; 1-2 190-260 lbs. 58.90-59.25; 1-3 170-190 lbs. 58-59.25; 1-2 sows 300-550 lbs. 42.00-48.00. Boars 40.00-50.00.

Leb. Valley Auction

No market report available at press time

St. Louis Auction

July 25, 1975

HOGS: 4000 Barrows and Gilts fairly active, fully steady.

BARROWS AND GILTS: US 1-3 200-250 lb. 58.75-59.25.

TRY A CLASSIFIED AD!

Oklahoma Cattle

July 24

Thursday Feeder Cattle Auction

Estimated Receipts 7,900

Same Day Last Week 10,926

Actual unloads materially short of the early estimate due to general rains of from one to six and one half inches over the entire marketing area. Feeder steers regained early decline with late trade steady to 50c higher. Feeder heifers steady to 50c lower. Majority receipts mixed good and choice 400-800 lb. feeder steers, 300-700 lb. feeder heifers. Moderate attendance of buyers.

FEEDER STEERS: Choice 400-500 lb. 32.00-35.00, 500-600 lb. 31.25-34.50, 600-700 lb. 32.00-35.00, 700-870 lb. 33.50-36.75, part load 825 lb. 37.40. Mixed good and choice 400-500 lb. 28.00-31.75, 500-700 lb. 28.00-32.75, mostly 30.00-32.50, 95-933 lb. 31.90. Good 350-600 lb. 26.50-29.00.

FEEDER HEIFERS:

Choice 300-500 lb. 24.25-26.50, 500-740 lb. 25.00-28.75. Mixed good and choice 300-500 lb. 21.50-24.50, 500-750 lb. 23.00-25.00. Good 300-500 lb. 19.00-22.75, 500-700 lb. 18.00-22.00.

CATTLE FOR THE WEEK: Feeder steers regained all of early week's downturn to close generally steady. Feeder heifers finished the week 50c to 1.50 lower. Slaughter cows closed mostly 1.00 higher, with some sales 1.50 higher. Slaughter bulls steady, instances 1.00 higher. Salable receipts this week numbered near 22,400 head compared to 29,400 last week and 23,765 same period last year. Cows comprised near 17 percent, feeder cattle 79 percent of total.

Lebanon Valley Livestock

No market report available at press time

Peoria Auction

July 25, 1975

HOGS: 3000 Barrows and gilts active, 50 higher.

BARROWS AND GILTS: US 1-2 200-240 lb. 59.00-59.50; US 1-3 200-250 lb. 58.50-59.00.

READ LANCASTER FARMING FOR FULL MARKET REPORTS

HAY MARKETS

Paul Z. Martin

Wednesday, July 23
15 loads of hay, straw and

ear corn sold as follows:

Mixed Hay 32 to 70; Timothy 53 to 60; Clover 35; Straw 41 to 46; Corn 75 to 84.

New Holland

July 21, 1975

151 loads of hay and 14 loads of straw. Timothy few loads at 64-65; mixed hay 42.00-57; straw 39-58; clover one load at 85; oats two loads 1.40 and 1.55 per bushel and corn 65-82.

Green Dragon

July 18, 1975

Prices Per Ton
13 loads hay.
Timothy, few loads 38.00-66.00; Mixed hay, few loads 51.00-62.00; Bromegrass hay, one load 62.00; Straw, 6 loads 42.00-50.00; Corn, 27 loads 70.00-79.00, couple to 99.00.

Regional

Hay Prices for Southeastern & So. Central Pennsylvania.

(All hay No. 2 and better, prices paid by dealers at the farm, price per ton.)

Hay & Straw steady, spots uneven.

Alfalfa 50.00-60.00, few to 70.00; Mixed hay 45.00-55.00; Timothy hay 35.00-45.00; Straw 25.00-33.00; Mulch 15.00-22.00.

RAY HARBOLD



ONE STEP HAULING

717-367-4036
Elizabethtown, PA 17022

Futures Trading

(Closing bids as of Thursday, July 24)

	Chicago Cattle	Chicago Hogs	New York Maine Potatoes	Chicago Fresh Eggs
August	47.65	55.80		49.50
September				
October	42.45	49.65		55.00
November			5.80	58.00
December	41.60	49.30		60.85
January 1976				56.85
February	41.40	48.20		
March			6.82	

Trend — Cattle are Stronger, Hogs are Stronger, Potatoes are Higher, and Eggs are Higher.

Markets Provided by Commodity Department
Reynolds Securities, Inc.

Chicago Grain Futures

(Closing bids as of Thursday, July 24)

	Corn	Wheat	Soybeans	Soybean Meal
September	2.78¾	3.68¾	5.72¼	134.25
October				136.25
November			5.74½	
December	2.64¾	3.83	3.83	139.75
January 1976			5.83½	140.50
March	2.71¾	3.93½	5.92	145.00
May	2.74½	3.95	6.01½	

Trend — Corn is Higher, Wheat is Higher, Soybeans are Higher, Soybean Meal is Higher.

Markets Provided by Commodity Department
Reynolds Securities, Inc.

U. S. Inspected Livestock Slaughter

Estimated Daily Livestock Slaughter Under Federal Inspection

	CATTLE	HOGS	SHEEP
Week to date	542,000	857,000	114,000
Sale period last week	548,000	883,000	119,000
Sale period last year	464,000	1,056,000	132,000

New Holland Horse Auction

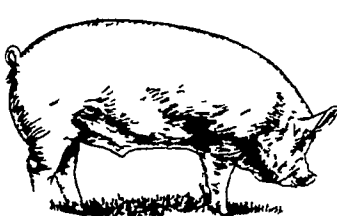
Monday, July 22

Reported receipts of 407 horses, mules and ponies. Market reported steady with last week.

Load of Kansas riding horses 150-410; load of

Tennessee riding horses 180-525.

Local work horses 300-520; mules 135-235; better horses 250-435; driving horses 185-370; riding horses 140-235; lightweight killers 16-18; heavyweight killers 22-24; mares 15-45; colts 5-20; geldings 15-35 and larger ponies 50-140.



NEXT FEEDER PIG SALE TUESDAY, AUGUST 5



Consign all your feeder pigs to Walter M. Dunlap & Sons where they will be handled by a capable and experienced staff.

WALTER M. DUNLAP & SONS

LANCASTER STOCK YARDS

Consignors can get state tags at our office, thereby saving 25c marketing expense.

For Further Information, Call 717-397-5136



FOR BETTER NET RETURNS SHIP TO THE DANVILLE LIVESTOCK MARKET

Old Rt. 11 Danville, Pa.
Phone (717) 275-2880

SALE EVERY MONDAY 2 P.M.

OWNERS

Charles C. Myers
(717) 569-2106

Melvin M. Lehman
(717) 964-3621