

Poultry groups looking for additional support

The Northeast Egg Marketing Association and the Pennsylvania Poultry Federation are jointly launching a campaign in order to raise support for needed funds for the American Egg Board (AEB) and NCEN.

This action is specifically important since it comes at a time when egg producers are still realizing the shock waves generated by NCEN's Gallup poll concerning the attitudes toward eggs.

The poll reports that eggs have been seriously damaged and bears out that the voices were right in calling for no let up in voluntary support for the AEB and NCEN.

Complicating the problem is the fact that many

producers have been under the impression that there has been a flow of funds from the national check off plan to AEB and NCEN. There has been none.

Given a successful referendum, that proposition is still months away.

Pa. Egg Producers active in the Northeast Egg Marketing Association and the Pa. Poultry Federation want to see renewed efforts to gather funds - one that will go forward without delay.

John Hoffman, director of the Pa. Poultry Federation and Paul Fisher of NEEMA have jointly announced that "the home stretch stride aimed at production and allied industries that have not as yet pledged funds will start at once."

As in other regions, the Northeast is planning an egg support breakfast at Hershey during the NEPPCO convention in October.

AEB and NCEN will have displays concerning the problems and services against the backdrop of the NEPPCO annual gathering.

A cleanup campaign is underway in other Northeast states seeking to add to the funds already underway at a target level of 1/2 cent per bird from producers or coming from voluntary contributions from allied industries. Each \$100 contribution will entitle the donor to two places at the breakfast.

For tickets contact John Hoffman at the Pa. Poultry Federation, 3807 Paxton St., Harrisburg, PA 17711 or C. A. O'Reilly at the Northeast Egg Marketing Association, 136 Herron Ave., Hightstown, NJ 08520. All checks should be made payable to the American Egg Board Fund Drive.

It is hoped that the 90 day drive will help bridge the gap that could last until Spring of 1976.

Produce exchange re-opened

HARRISBURG - Produce Information Exchange (PIE), a service of the Pennsylvania Department of Agriculture to assist in the sale of Pennsylvania grown fruits and vegetables, will be available again this year, Secretary Jim McHale announced recently.

"Both buyers and sellers indicated last year's trial effort was a success," McHale said. "Growers and packers were able to sell produce they could not dispose of through normal channels. At the same time, buyers were able to locate new or additional sources of supply. The service this year will be available to consumer buying clubs and co-ops as well as to wholesale buyers and brokers."

The Department of Agriculture's Bureau of Markets will serve as

classified ads

PHONE 717-394-3047 or 717-626-2191

Mail Box Market

For Sale - RCA, Whirlpool washer & dryer, turquoise, match set, both real good shape, phone 717-733-7000.

For Sale - Early transparent apples and plums, dry ear corn, call 215-267-7908 or 267-7261.

Mail Box Market

Wanted to Buy - 5 h.p. gasoline engine with clutch, must be in good condition. Also wanted - potato plow, contact Elam Z. Zimmerman, Wood Corner Rd., 3 Mi. West of Ephrata, off Route 322, Route 4, Lititz, Pa. 17543, phone 717-733-6698.

Mail Box Market

For Sale - One Yorkshire boar, service age. Elam B. Stoltzfoos, Hess Road, Leola RI.

For Sale - Field Queen forage harvester. Also, Field Queen side dump forage harvester. Both like new. Phone 717-442-8153.

For Sale - AKC Irish Setter pups. Daniel K. King, between Nickel Nines and Rt. 896 on Corner Catch Road.

For Sale - Two service age Yorkshire Boars. 717-656-6801

For Sale - Trail Blazer 5 h. p. mini bike with lights. 215-869-9027

For Sale - One pair identical Belgain work horses, 1600 lbs. 717-354-8238

For Sale - Used buggy, good condition, if interested contact Henry S. Zook, Newport Road, Ronks, RI, Pa. near Scelt Level.

For Sale - Farmall 460 Diesel, fast hitch, p.s., T-A, A-1 Cond., phone 717-933-8713.

For Sale - I.H. 650 Harvester, 1,000 RPM PTO shaft, 2-row corn head and pickup head, real sharp, phone 717-896-8735 after 6.

For Sale - Chihuahua puppies, Ruth Beiler, Paradise, RI, S. Belmont Rd.

For Sale - 12 Angus heifers, average 600 lbs., phone 717-665-6546.

For Sale - High clearance sprayer with A.C.G. transport, phone 717-898-8644.

For Sale - 20 ft. Silo-O-Matic silo unloader, phone 717-656-6763.

National Central opened banking offices during the second quarter in suburban Coatesville in Chester County and at Newmans town in southeastern Lebanon County.

Bank notes

LANCASTER, PA - National Central Financial Corporation, parent company of National Central Bank, closed the first half of 1975 with a 4.9 percent net income gain as senior executives of that company predicted the development of a resurgence in the national economy.

Wilson D. McElhinny, company president, and John C. Tuten, board chairman, reported that NCFC net income for the first two quarters of 1975 was \$4,460,189 compared to \$4,248,812 one year ago. Income Before Securities Gains and Losses for the corporation also rose in 1975, up 3.58 percent for the six month period compared to the like period last year.

In announcing the second quarter figures, the two

corporation executives expressed optimism with regard to an improvement in the economy and said that NCFC is ready to take advantage of the predicted upturn.

"With national indicators suggesting a gradual resurgence in the economy, National Central Financial Corporation has positioned itself to benefit from the opportunities and economic upturn will afford," the report said.

The two men pointed to increased bank liquidity as evidence of the corporation's preparation for general improvement of the economic climate.

National Central was a net purchaser of Federal Fund during the second quarter of 1974, averaging \$29,890,000 during that period. But, during the second quarter this year, National Central sold an average of \$4,716,286 in Federal Funds. This shift for NCFC in the Federal Funds Market has increased the liquidity of its investment portfolio by freeing U.S. Government securities from pledging.

The two National Central top managers also reported an increase in total deposits and the opening of the 49th and 50th full-service offices in the National Central Bank system.

On June 30, 1975, total deposits were \$820,244,177 as compared to the year ago figure of \$808,836,017, for an increase of 1.4 percent.

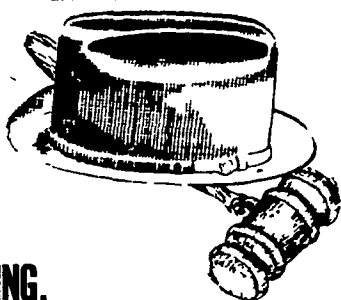
headquarters for PIE. Growers and packers with something to sell and buyers looking for supplies can call 717-787-4210 and provide information, which will be made available to all interested parties. The service is now available and will continue through the 1975 fruit and vegetable season.

McHale pointed out the Bureau of Markets will serve only to bring buyers and sellers together. "It will make no deals and collect no fees," he said. "The sole purpose of PIE is to help sell more state-grown produce."

TRY A CLASSIFIED AD!

HAT & GAVEL AUCTION CO.

1 Mile North of Lititz on Route 501



THURSDAY EVENING, JULY 30, 1975

Pre-War Train Collection Household, Antiques, Coins

Selling Complete Household out of Lititz and others

1915 No 33 Standard gauge Lionel, Marx S gauge American Flyer, Lionel 204.

Slanttop bookcase desk, twin beds, single box springs and mattresses, maple bedroom furniture, sofa, GE refrigerator, oak bureaus, Maytag wringer washer, metal wardrobes, gate leg table, Cowen crocks, floor model stereo, Gone With The Wind lamp, broad ax, outside trash containers, pressed glass, china and many other miscellaneous items

Trains will be sold at 8 P.M.
Coins sold at 8 P.M.

WE SPECIALIZE IN PUBLIC AUCTIONS, ESTATES AND ANTIQUES.

WILBUR H. HOSLER

306 Owl Hill Rd., Lititz

Harold K. Galebach, Partner

HAT & GAVEL AUCTION CO. SELLS ON COMMISSION - CALL 626-0254

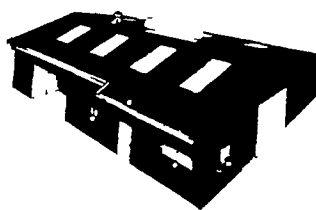
Receiving Hours Monday, Noon to 9 P.M.
Wednesday, 9 A.M. to 5 P.M. Tuesday, Pickup Day



VERNON E. MYER

STEEL BUILDINGS AND GRAIN STORAGE

R D #4 LEBANON, PA 17042
PHONE (717) 867-4139



COMMERCIAL and AGRICULTURAL BUILDINGS

WE OFFER COMPLETE ERECTION ON ANY SIZE OR STYLE BUILDING

For Further Information On Our

STEEL BUILDINGS And GRAIN STORAGE

....Feel Free To Mail Attached Coupon

Or Call Today! No Obligation.

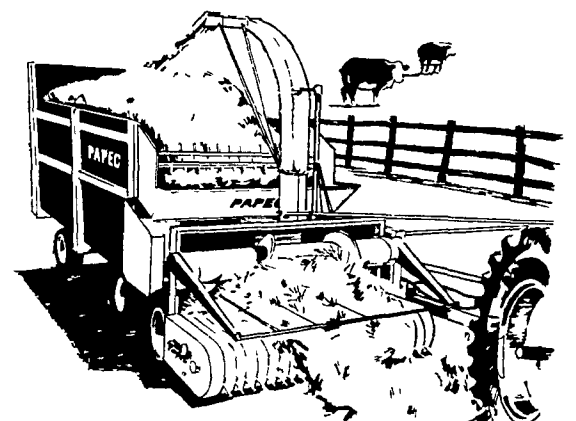
SPECIAL TRADE-IN
HUBER ROAD
GRADER
\$1400.00

Mail Coupon Today!

- SEND STEEL BUILDINGS LITERATURE
- SEND GRAIN STORAGE LITERATURE

NAME ..
ADDRESS ..
CITY .. STATE..... ZIP.....
TELEPHONE.....

We feature the PAPEC



"180" MODEL 180 FORAGE HARVESTER

This big, tough harvester features a rugged 6 knife cylinder for precision chopping with the largest tractors. An exclusive, built-in rotating grinder puts a new edge on your knives whenever and wherever needed.



STAUFFER DIESEL, Inc.

312 W. Main St.
New Holland, Pa.
Phone 717-354-4181