

York County team wins livestock contest

The York County 4-H Livestock Judging Contest was held at Warrington Green Farms, Wellsville on Thursday, July 10. The York County team was high in the contest with a score of 1222. The team consisted of Tim Livingston, Dover; Kathy

Sunday, York; and Nat Sheffer, Hanover. Lancaster County was second with a score of 1174. There were seven county teams participating. Kathy Sunday was first in beef cattle judging with a score of 148. Terry Dixon, York was

second with a score of 141. Tim Livingston was 3rd with a score of 140. Kathy Sunday was first in sheep judging with a score of 144. Nat Sheffer was second with a score of 143 and Tim Livingston was 3rd with a score of 138.

In swine judging Nat Sheffer was second with a score of 140 and Tim Livingston was 4th with a score of 132. Tim Livingston was high individual overall with a score of 410. Kathy Sunday was second with a score of

409. Nat Sheffer was 4th with a score of 403. Terry Dixon was 6th with a score of 388 and Wayne Bankert, Red Lion was 7th with a score of 387. Kathy Sunday was high in oral reasons with a score of 130. Nat Sheffer was 3rd with a score of 124. Terry Dixon was 4th with a score of 122 and Tim Livingston was 5th

with a score of 120. In the Junior Contest Harris Wright, Abbotstown was 3rd with a score of 260. Fourth was Terry Lehigh, East Berlin with a score of 258. Seventh was Donald Flory, Red Lion with a score of 247 and Lisa Dobrosky, Glen Rock was 8th with a score of 247.

CENTRAL TRACTOR

CENTRAL TRACTOR PARTS CO.



DOUBLE DOLLAR Sale!
Sale Subject to Stock on Hand

1590 Manheim Pike, Lancaster
Phone 569-0111
Open Mon.- Sat. 8 a.m. to 5 p.m.



Dynamark Made by AMF

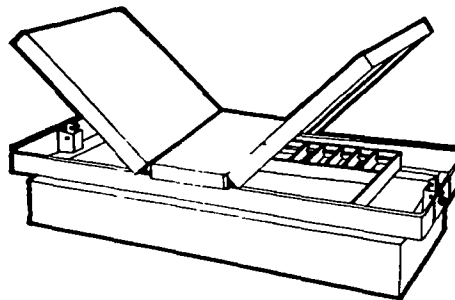
HURRY! Sale Prices Good Only through Saturday, July 26, 1975.

SAVE 100⁰⁰

SALE **599⁹⁹**

8 H.P. Muscle Machine

Powered by an 8 H.P. shock mounted Briggs & Stratton engine, this machine has a 12 volt electric start, twin blade 36" mower and heavy duty 4 gear transaxle transmission. Oversize tires rear 18 x 9.50 front 15 x 6.00
22460-258 Reg. 699.99



SAVE 20⁰⁰

SALE **799⁹⁹**

Pickup Tool Box

Fits most standard pickups
22185-269 Reg. 99.99

SAVE 2⁰⁰

SALE **10⁹⁹**

Jig Saw

Cuts in wood, metal, and plastics with a burnout protected motor and double insulation
11107-097 Reg. 12.99

Black & Decker®

SAVE 2⁰⁰

SALE **9⁹⁹**

1/4" Drill

Unbreakable housing double insulation and can be used with accessories such as sanders buffers and grinding wheels
11100-097 Reg. 11.99



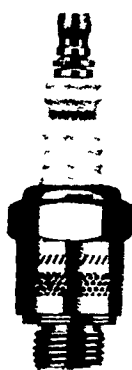
SAVE 12%

SALE **69^c**

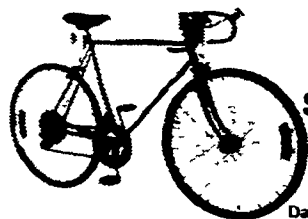
Spark Plugs

We carry spark plugs for most makes and models, tractors, cars, trucks and most other engines
Reg. .79

Resistor Plugs Reg. 94c



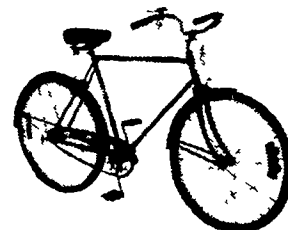
SALE **84c**



SAVE 17⁰⁰
SALE **82⁸⁸**

26" 10 Speed

Daraillieur 10 speed gearing Frame colored Space orange
Men's Style 23834-242
Ladies Style 23835-242 Reg. 99.88



SAVE 16⁰⁰
SALE **63⁹⁹**

26" 3 Speed

Lightweight diamond frame Front and rear hand operated caliper type brakes Frame colored Polynesian brown
Men's Style 22838-242
Ladies Style 23839-242 Reg. 79.99



Central Tractor

Motor Oil

SALE **899**

5 Gal.
10W 13707-271
20W 13708-271
30W 13709-271
Reg. 10.99

SALE **45c** per Qt.

10W 13704-271
20W 13705-271
30W 13706-271
Reg. 86c

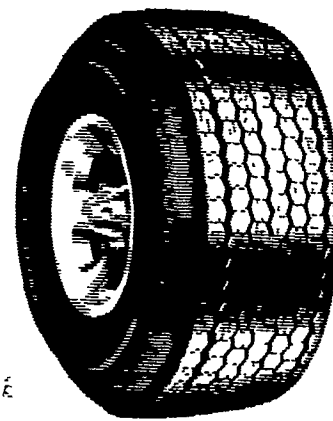
SALE **1069**

10W 40

5 Gal.
13711-271 Reg. 12.69

SALE **55c** per Qt.

10W 40
13710-271 Reg. 75c



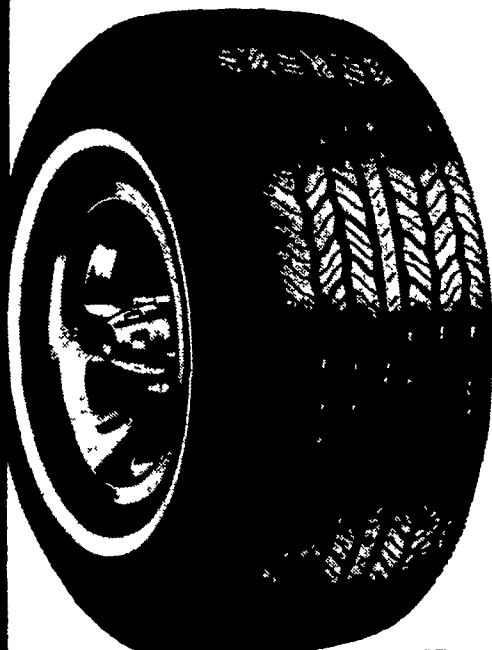
SAVE up to 20⁰⁰ per set of 4

Custom Long Miler

Full 4-ply polyester tire gives dependability at a popular price. The busy, 7 rib tread pattern gives you a smooth, stable ride

Size	Stock No	F.E.T.	Reg.	Sale
A78-13	18615-239	1.76	23.19	19.99
B78-13	18616-239	1.84	24.69	20.99
C78-14	18617-239	2.04	26.29	22.99
E78-14	18618-239	2.27	28.39	23.99
F78-14	18619-239	2.40	28.89	24.49
G78-14	18620-239	2.56	29.89	25.99
H78-14	18621-239	2.77	30.59	26.99
F78-15	18622-239	2.45	29.89	24.99
G78-15	18623-239	2.60	30.79	25.99
H78-15	18624-239	2.82	31.89	26.99
J78-15	18625-239	2.99	32.59	27.99
L78-15	18626-239	3.11	33.99	28.99

Sale Prices do NOT include F.E.T.

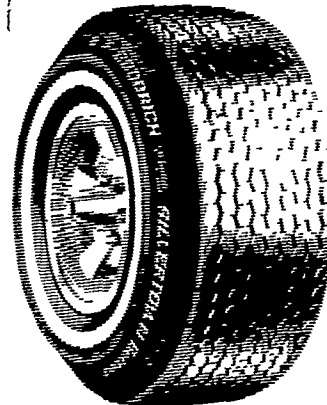


SAVE up to 47⁶⁰ per set of 4

Lifesaver 78 Steel Belted Radials

Size	Stock No	F.E.T.	Reg.	Sale
BR 78-13	18593-239	2.16	46.19	36.99
CR 78-14	18594-239	2.34	48.79	40.99
DR 78-14	18595-239	2.45	50.89	42.99
ER 78-14	18596-239	2.55	52.99	44.99
FR 78-14	18597-239	2.67	55.39	46.99
GR 78-14	18598-239	2.89	56.49	47.99
HR 78-14	18599-239	3.09	60.89	50.99
GR 78-15	18600-239	2.96	60.79	50.99
HR 78-15	18601-239	3.17	62.39	57.99
JR 78-15	18602-239	3.31	64.49	53.99
LR 78-15	18603-239	3.46	68.89	56.99

Sale Prices do NOT include F.E.T.



SAVE up to 24⁰⁰ per set of 4

Silvertown Belted

This Polyester Fiberglass construction gives good mileage at a moderate price. Wide white stripe for modern styling. You'll like the smooth quiet ride and positive handling

Size	Stock No	F.E.T.	Reg.	Sale
A78 13	18604-239	1.77	25.99	22.99
C78 14	18605-239	2.10	29.99	24.99
E78 14	18606-239	2.32	31.75	26.99
F78 14	18607-239	2.47	32.89	27.99
G78 14	18608-239	2.62	33.69	28.99
H78 14	18609-239	2.84	36.39	30.99
F78 15	18610-239	2.55	34.89	29.99
G78 15	18611-239	2.69	35.99	30.99
H78 15	18612-239	2.92	37.29	31.99
J78 15	18613-239	3.09	37.99	32.99
L78 15	18614-239	3.21	39.99	33.99

Sale Prices do NOT include F.E.T.