

## Weaver announces promotions

New Holland, Pa.: Daniel D. Brown, 609 West Orange St., Lancaster, and Stephen S. Swain, 622 Broad St.,

Oxford, have been promoted to new positions within the Quality Assurance Department of Victor F. Weaver, Inc., New Holland. Brown has been named to the post of quality assurance supervisor, while Swain has been promoted to the position of assistant quality assurance supervisor.

Brown, joined Weaver in 1974 upon graduation from Franklin & Marshall College, where he received a degree in Biology. Since coming to Weaver he has served as quality assurance inspector, and more recently as quality assurance supervisor trainee.

In his new position as quality assurance supervisor, Brown will be responsible for departmental inspection services and quality assurance programs.

Swain came to Weaver in 1972 as a product development technician after attending the University of Delaware. More recently he has held the position of processing development group leader.

In his new position, Swain will be responsible for supervising night shift,

quality assurance operations.

## Implement exhibits at Allentown

Farm implement exhibits have traditionally been one of the main attractions at a county fair, not only for farm people but their city cousins as well. This year's Allentown Fair, July 31 to Aug. 9 will restore this feature to the prominence it was given 20 years ago.

For more than a decade, there have been only two dealers displaying their wares. Fair officials, as part of the program to reemphasize the agricultural aspects of the fair, have contracted with three ad-

ditional firms to help put on an expanded show in 17,000 square feet of space adjacent to the Farmerama area in the west end of the grounds.

Agway, handling John Deere machines, and International Harvester, with Farmall, have made up the exhibit alone for some years. This year they will be joined by Beck Brothers, Emmaus R1, Ford; Leiser's, Inc., Nazareth Pike, Long, and C.J. Wondsider, Quakertown R1, Allis-Chalmers.

Together, the five will provide a farm implement exhibit that may not be any bigger or better than the displays of a generation ago but bigger and more comprehensive than they have been more recently.

The show will serve a twofold purpose. It will give the farmer an opportunity to check out the relative merits

of the great variety of implements to determine which is best for his needs. At the same time, urbanites can satisfy a natural curiosity about the brightly painted and sometimes awesome - appearing pieces of machinery the uses of which they might still be puzzled about, even after examining them at close range. And, more importantly, the price tags such as \$5,000 or \$15,000 or \$25,000 might give the layman a better understanding of what it costs to produce the crops so necessary to everyday living.

**TRY A CLASSIFIED AD!**

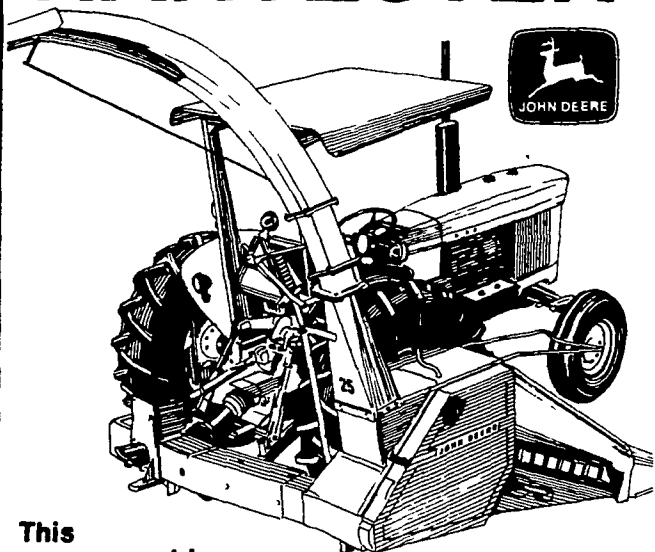
- \* LIQUID MANURE PIT  
Deodrant Concentrate
- \* LICE POWDERS  
For Dust Bag Kits
- \* TOXANOX LIQUID  
For Back Rubber Units
- \* SHELL HORSE WORMER  
For Internal Grooming
- \* SP - 250 - SWINE  
Antibiotic Premix
- \* TRAMISOL HOG WORMER  
For Lung Worms In Hogs
- \* CATTLE & HOG MINERALS  
w/Vitamins
- \* HORSE & CATTLE POWDER  
A Conditioner

**AARON S. GROFF & SON**

FARM & DAIRY STORE

R D 3, Ephrata, Pa 17522 (Hinkletown) Phone 354-0744  
Store Hours 7 A.M. to 9 P.M.  
Closed Tuesdays & Saturdays at 5:30 P.M.

## 25 FORAGE HARVESTER



This maneuverable 1-row chopper makes the most of "small" tractor power

Here's a corn-silage harvester that makes owning your own practical. The 3-point-hitch-mounted 25 You get uniform feeding with exclusive stalk-gripping rubber gathering belts and four feed rolls. An exclusive offset spout lets you fill the entire wagon. And there's lots more. Stop in and see the 25 soon.

**Landis Bros. Inc.**  
Lancaster 717 393 3906

**A.B.C. Groff, Inc.**  
New Holland 717 354 4191

**Adamstown Equipment Inc.**  
Mohnton RD2, Pa 19540  
[near Adamstown]  
215 484 4391

**Pikeville Equipment Inc.**  
Oyster Dale Road  
Oley RD#2, PA  
215 987 6277

**M. S. Yearsley & Sons**  
West Chester 215 696 2990

**Neuhaus'es, Inc.**  
Glen Rock Pa  
717 235 1306

**Agway, Inc.**

Allentown Equipment Center  
Chapman Pa  
215 395 3381

**Stanley A. Klopp, Inc**  
Bernville Pa  
215 488 1510

**I. G.'s Ag Sales**  
Silverdale Pa 18962  
215 257 5136

# Myers

Before you select your water system, get the facts on the complete MYERS line.

**PUMPS • TANKS  
• PLASTIC PIPE •  
• WATER CONDITIONERS •**



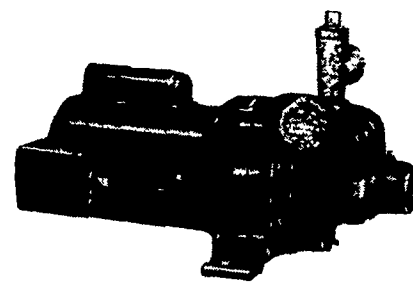
**SUBMERSIBLE PUMPS**  
(for 4" wells)  
Capacities to 3400 GPH, well depths to 900 feet.

"Exclusive"  
3 year Warranty from date of installation.

**WATER CONDITIONING**  
Fully Automatic or Manual, Cabinet or Free Standing, Two Tank Models.

**WATER FILTERS**  
Solves objectionable water problems. Fully Automatic or Manual.

**"EJECTO" PUMPS**  
(convertible) Shallow well - Capacities to 1800 GPH; Deep Well - Capacities to 1260 GPH with well depths to 180 feet.



DISTRIBUTED BY:  
**BEIBLE'S PUMP & SUPPLY**

• (Main Office) 419-27 Dalton St.  
Emmaus, PA 18049

• (Branch) 1668 Wyoming Ave. Rt. 11  
Forty Fort, PA 18704

## AUTHORIZED MYERS DEALERS:

**M.W. EISENHART**  
Center Valley Pa 18034  
PHONE (215) 282-3550

**WILLIAM S. PHILLIPS HARDWARE**  
Route 1  
Stein's Corner Pa 18066  
PHONE (215) 285 6290

**FRANCIS L. SHIFFERT**  
Box 80  
Palm Pa 18070  
PHONE (215) 679 7153

**EARL F. KEGERISE, INC**  
Pricetown Road  
Fleetwood Pa 19522  
PHONE (215) 944 8532

**RICHARD M. SCHAEFFER SALES & SERVICE**  
Route no 1 Box 88  
Lenhartsville, Pa 19534  
Tel (215) 562 8362

**RICHARD B. SNYDER**  
5th St Mountain Rd  
Route 2  
Emmaus, Pa 18049  
PHONE (215) 965 9574

**LONGACRE ELECTRIC, INC**  
Bally Pa 19503  
PHONE (215) 845 2261

**SCHULTZ WELDING SHOP**  
Route 2  
Easton Pa 18042  
PHONE (215) 759-1951

**STEWART PLUMBING & HEATING CO.**  
420 State St  
Hamburg Pa 19526  
PHONE (215) 562-7006

**PIKEVILLE IMPLEMENT SHOP**  
Oley Pa 19547  
PHONE (215) 987 6277

**CLARENCE R. SEAMAN**  
Dauberville Pa 19517  
PHONE (215) 926-8341

**SHOLLENBERGER FARM SUPPLIES**  
4th & Pine St  
Hamburg Pa 19526  
PHONE (215) 562 2005