

Swimming Pools

Each year some 40,000 people are treated in hospital emergency rooms for injuries associated with in-ground swimming pools. The greatest number of those injuries are a result of falls on slippery surfaces surrounding pools. Installation of non-slip material around the pool could make the area safer. It is also a good idea to place rescue and first aid equipment nearby. Keeping electrical appliances, such as radios, away from the swimming pool will reduce hazards of electric shock.

Consumers who may be building swimming pools this season should consider constructing a tall fence on all sides of the pool. Young children drown each summer because they wander out to swimming pools unnoticed. And for this reason, the swimming pool should not be directly accessible from house or patio doors.

Minibikes

Last year over 28,000 people required hospital emergency room treatment for minibike related injuries. Children ages 10 through 14 comprised over 50 percent of those injury victims.

Accidents on minibikes are generally due to loss of control by the driver, poor riding conditions, mechanical or structural problems and contact with the bikes' parts.

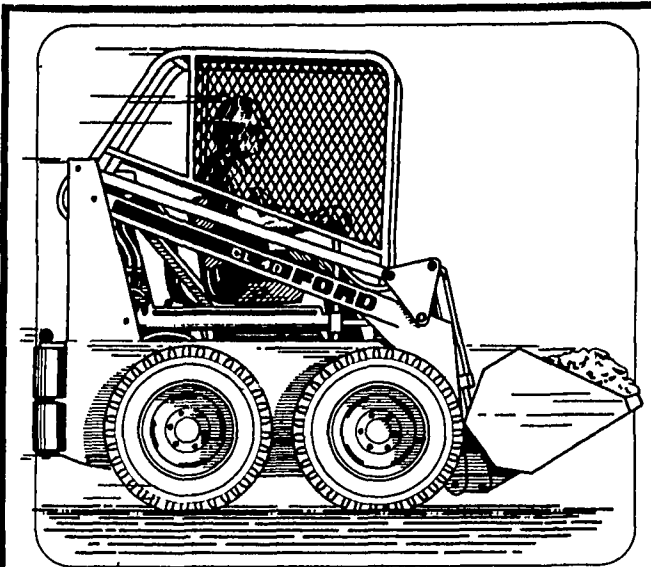
When purchasing a minibike, consumers should be aware that the larger the wheels and the greater the wheel base, the more stable the minibike. Exhaust pipes that point toward the rear may reduce the possibility of thermal burns to the legs. Most states do not allow children under 16 to operate minibikes on public thoroughfares, so parents should consider whether or

not there are smooth off-street riding surfaces nearby before they purchase a minibike for children and whether their youngsters are mature enough to operate a minibike.

Riders should beware of fence wires or cables which are oftentimes difficult to see. When riding a minibike, drivers should wear suitable clothing, including a heavy-duty helmet and sturdy, closed shoes.

ITALIAN WINE

One out of every 15 acres of Italian land is planted in wine vineyards



smooth
Ford Compact Loaders

Smooth! Ford Compact Loaders give you hydrostatic drive for swift and smooth acceleration and deceleration. Smooth forward-reverse direction changes. Easy spin turns.

Pictured above, the CL-40 with 40-hp liquid-cooled engine has a 1,500-pound loader lift rating. Same with the 30-hp CL-30. The mini-compact CL-20 with 25-hp engine gives you 800-pound lift rating.

Standard features include hydrostatic drive, 4-wheel drive traction, mechanical self-leveling buckets on CL-30 and CL-40, skid-steer maneuverability, standard safety start, parking brake, and loads more.

Stop by soon and test-drive a Ford Compact Loader. See how it can smooth out your materials handling operations



**KELLER BROS.
TRACTOR CO.**

Buffalo Springs Call (717) 949-6501

10 Miles North of Lititz

AGWAY

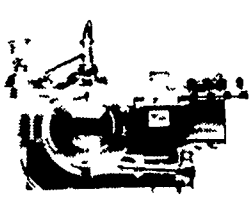
There's nothing old-fashioned about Sta-Rite stanchion barn pipeline milking.



Modern Sta-Rite dairy equipment makes every milking system better, more efficient, easier on you and your cows. And you can add any of these up-to-date products to your stanchion barn or milking parlor.



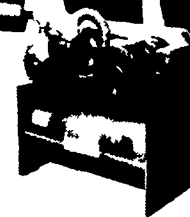
The Sta-Rite Full View Milker permits a constant visual check of milk flow. Cuts milking time, reduces over milking.



Sta-Rite's 900 Series Milk House Panel is factory assembled and tested. Switches instantly from milk to wash for thorough pipe line cleaning. Automatic self drain.



The new Sta-Rite Vac Sav Milk Valve reduces vacuum loss to a minimum. Also gives protection against contamination.



A Sta-Rite Full Vac vacuum pump insures positive vacuum for your milking system.



Make pipeline washing completely automatic and Grade A clean with a Sta-Rite Full Convenience Pipe Line Washer. A 24-hour timer lets you pre-program all necessary wash, rinse and sanitize cycles with fail-safe protection.

See these men for expert help in designing a milking system to fit your operation.



WILMER MARTIN
Home Phone
(215) 445-5652



MELVIN STOLTZFUS
Home Phone
(717) 392-0066



SUPPLY CENTER

1027 DILLERVILLE ROAD, LANCASTER, PA
PHONE 717-397-4761

STORE HOURS: Open Friday Evenings til 8 p.m.
Mon. thru Thurs. 8 a.m. to 5 p.m.
Sat. 8 a.m. to Noon

YOUR PIONEER SALESMAN IS READY WITH SUPERIOR SEED AND SERVICE

- Hybrid Corn — high yielding single and special crosses.
- Alfalfa Seed — for any rotation or plowdown.
- Forage Mixes — A mix for every need (pasture, hay, haylage, greenchop or green manure plowdown).
- Hybrid Sorghum — grain, forage, and sorghum — sudangrass hybrids.

Don't Delay. See Your Pioneer Salesman To-Day!



PIONEER.

Corn, Sorghum, Alfalfa

© Registered trademark of Pioneer Hi Bred International Inc. Des Moines Iowa U.S.A.