

LOCAL CLASSIFIED ADVERTISING RATES

Use This Handy Chart To Figure Your Cost

Words	(1) Issue	(3) Issues
14 or Less	\$1.40	\$3.36
15	1.50	3.60
16	1.60	3.84
17	1.70	4.08
18	1.80	4.32
19	1.90	4.56
20	2.00	4.80

KEYED ADS (Ads with answer coming to a Box Number c/o Lancaster Farming) 50 cents additional

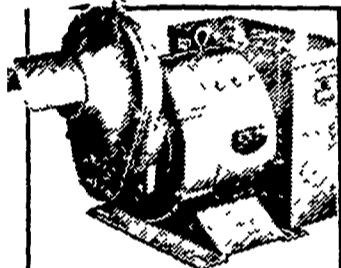
Ads running 3 or more consecutive times with no change billed at 20 percent discount

Deadline Thursday of each week's publication

Lancaster Farming
P O Box 266
Lititz PA
Phone Lancaster 394 3047
or Lititz 626 2191

Farm Equipment

MODERN FARM SYSTEMS
Portable Grain Cleaners.
Clean all types of grain with a single adjustment. Capacity 1200 bu. per hour.
Complete line of storage and grain handling equipment.
Sales & Service By
THOMAS BACHMAN
Fallston, Md.
301-838-7478



Protects Your Farm Against Power Failure

Your profits go down when power goes off! Let us show you how you can protect your family and farm from costly annoying power outages by leasing or buying a Winpower alternator.



"The old reliable"
DISTRIBUTOR
MARVIN J. HORST

Dairy Equipment and Amana Appliances
RD #1 (Iona)
Lebanon, PA

Phone (717) 272-0871
Located on Route 897 between Schaefferstown and Lebanon over 30 years in business at same place

Farm Equipment



HEITZMAN EQUIPMENT, INC.

Garden, Farm and Ind. Equipment

Glenmoore, PA

Phone: 215-458-8525

- Case 350 Dozer with power angle lift blade
SAVE \$2 500 Price \$14 995
- Case 586 Fork Life 6 000 lb capacity
SAVE \$2 000 Price \$15 500
- Case 1740 Uni Loader (demonstrator) 42 h p
SAVE \$1 500 Price \$9 750
- Case 1860 Uni Loader 16 h p
SAVE \$1 100 Price \$3 500
- STW 15 Vibromax 1 1/2 ton static roller \$2 195
- AW 750 Vibromax plate compaction with water tank \$795
- SL 2 Vibromax rammer 10 500 force pounds \$1 495
- Used M F 203 Loader Backhoe \$3 995
- Used 1966 Series 60 Chev Tilt Bed Truck in Perfect Cond new tires \$2 995
- Rebuilt Fork Lifts 2 000 lb and 4 000 lb capacity immediate delivery



Farm Equipment



USED EQUIPMENT

- New Holland 68 baler w-thrasher
- Chisel Plow
- Fox SP Forage Harvester
- Gehl Forage Harvester w-2 row corn head
- TRACTORS**
- Farmalls - Cub, Super A. H. M
- Fords - 9N, 8N, 800, 4000 Row Crop, 8000 Diesel
- Allis Chalmers - CA w-Plow, Cultv. & Mower
- Massey Harris 165
- Ford 4000 Tractor, Loader, Backhoe
- Small Riding Garden Tractors
- Wheelhorse 10 H.P.
- Massey Harris 12 H.P.
- IHC 7 H.P. Model 102, 122, 149
- STRALEY FARM SUPPLY, INC.**
1760 East Canal Road
Dover, PA 17315
717-292-2631 or 717-292-4443

classified ads

PHONE 717-394-3047 or 717-626-2191

Farm Equipment

Wanted - Horse drawn milk wagon. Contact: Frank McDonnell, East Greenville RD1, PA 18041, Call 215-679-6892

MONTGOMERY EQUIPMENT

USED EQUIPMENT

- *Metroe 600 Skid Loader
- *Late Model Gehl Blower PTO
- *Kools Long Table Blower PTO
- *J D 50 Side Mower
- *Int Hay Conditioner
- *New Holland 880 Harvester with Cornhead & Pickup
- *Gehl PTO Forage Blower
- *N H SOLD Haybine
- *Case 555 Haybine
- *New & Used Elevators in Stock
- *Grain Boxes & Wagons
- *Case 150D Unloader
- *N H 1469 S P Haybine
- *N H 269 Baler w/Thrower
- *Harvestore Roller Mill w/12" elec motor
- *Badger Forage Box
- *A C 1750 Tractor only 225 hrs
- *A C D 500 Hyd Ldr
- *Case 450 Bulldozer
- *Case D630 Tractor
- *D B 990 Dsl Tractor
- *Farmall 150D-hydro Tractor
- *A C D19 Tractor w/4 B Plow
- *A C WD45 Tractor & Loader
- *A C 480 Blower & Pipe
- *Massey Ferguson 200 Bu Spreader
- *N H 78 Baler & Thrower
- *Ford 8 N
- *Case 580 D & Loader
- *IH 330 & Loader
- *A C 390 Haybine (like new)
- *Massey SOLD Combine
- *16 ft Cattle Truck Body
- *J D 32 ft Field Cultivator (foldup)
- *A C 300 Baler
- *A C 303 SOLD w/thrower
- *Wisconsin 4 cyl power unit w/starter
- *Wisconsin 2 cyl power unit
- *A C 82 SOLD Haybine
- *A C 444 Baler w/thrower (like new)

CASE AND ALLIS CHALMERS

- NEW TRACTORS IN STOCK**
- *D B 990
- *D B 1210
- *A C 6040 Diesel Tractor
- *David Brown 995
- *D B 885 G
- *A C 185 Diesel Tractor
- *Case 1070 w/Cab and Air
- *Case 1370 w/Cab & Air

NEW EQUIPMENT

- IN STOCK**
- *A C Corn Planters
- *13 ft 9 Disc
- *14 ft Cultipacker
- *13 ft Cultipacker
- *13 ft Cultmulcher
- *Dion Forage Boxes
- *Ontario 16 Disc Grain Drill

NEW HOLLAND

- IN STOCK**
- *273 Balers
- *276 Baler
- *850 Round Baler
- *469 Haybines
- *519 Spreaders
- *676 Spreaders
- *790 Spreaders
- *8 Crop Carriers
- *Pickup Attachments for Harvesters

MONTGOMERY EQUIPMENT

Rt 273 Rising Sun, Md
301-658-5568
Immediate Financing
Sales SERVICE
RENTALS
OPEN 6 DAYS A WEEK
OPEN EVENINGS

Farm Equipment

For Sale - Equipment - ALL NEW
New Farmall 1066;
One 70 Hydro;
One 464 Gas Tractor
One 464 Diesel Tractor
One 574 Gas Tractor
One 574 Diesel Tractor
One 510 4 bottom, 6 plow
Used Equipment
One J.D. Model 30
Combine PTO
One I.H. 101 Combine 10 ft. self propelled
Land's Farm
Machinery
Thorndale
Phone 215-269-2676

Used John Deere 24T Baler with ejector.
EVERGREEN TRACTOR CO., INC.
Lebanon, PA
717-273-2616



M.F. Case
New Idea Gehl
Dunham Tillage Tools
NEW EQUIPMENT IN STOCK
N.I. Parallel Bar Rakes 5 & 6 ft. Rotary Cutters
1830 Unloader
M.F. 468 4-row Corn Planter
M.F. 39 2-row Corn Planter
(2) 10 ft. Dunham Cultimulchers
(2) 12 ft. Dunham Cultimulchers
Gehl 880 Mower Conditioner
3 pt. Spimer Fert. Spreaders
BF 130 Gehl Blender Feeder
Plows 2, 3, & 4 Bottom
M.F. 124 Baler
Forage Boxes, Gehl and New Idea
580 B. Loader Backhoes
1737 Unloaders
David Brown Tractors
Models - 885N - 990 - 995 - 1212
Satoh Tractor & Loaders
Spring Harrows
New Idea Spreaders
Cultipackers
N.I. Mid. Cornpicker
(2) Gehl Grinder Mixers
Compact Tractors
Case and New Idea all sizes.
USED EQUIPMENT
990 David Brown, 260 hrs.
Case 330 Baler w-thrower
Ford 6 ft. pull rotary cutter
8N Ford, real nice
Case VC w-cultivators
Case 1537 Unloader
N.I. Model 213 Single Beater Spreader
Case 300 Industrial Tractor Loader
Mustang Mod. 1700 Skid Steer loader
A. L. HERR & BRO.
Quarryville 786-3521

Poultry & Supplies

Farm Equipment

Special on Hesston Windrowers PT7's and PT10's
Buy now with small down payment and no finance charges.
Balance not due until April 1, 1976.
Generous discounts available on Hesston Stakhands.
UMBERGER'S MILL
RD4, Lebanon (Fontana)
Phone 717-867-5161

Poultry & Supplies



DEKALB MOYER'S CHICKS, INC.
Quakertown, PA
Ph 215-536-3155

Now handling the Dekalb lines
Dekalb-Kimber K-137
Dekalb 231
Dekalb-Warren S. S.

For Sale - New egg cartons misprints, \$20.00 per thousand picked up. Plain & Fancy Egg Ranch, RD3, Elizabethtown, PA 717-665-3511.

For Sale - 30,000 Cage Layer operation. Situated on 7 acres of land, located in Eastern Pa. Ideal for a family operation. Price to be negotiated. Write Box 266A, co Lancaster Farming, Lititz, Pa. 17543.

For Sale - 400 Leghorn Cockerels, 20 weeks old; 1600 Shaver pullets, 20 weeks July 11. Phone 215-754-7695



LAYERS GREIDER LEGHORN FARMS, INC.
Phone 653-1855
MOUNT JOY RD1, PA

ARE YOU BUYING HAY OR STRAW?

LET'S TALK PRICE
Phone 215-395-2036

JAMES H. DeLONG, INC.
R.D. 2
OREFIELD, PA. 18069

LONGENECKER'S HATCHERY

Box 317, Elizabethtown, PA Ph: (717) 367-1545

J. J. WARREN SEX-SAL

STARTED PULLETS, 20 WEEKS SEX LINKS
500 June 30 700 Aug 26
3000 July 29
HUBBARD LEGHORNS
3400 Aug. 26