

## New York Dressed Meats

June 25

DAILY DISTRIBUTIVE - LESS THAN CARLOT MEAT TRADE.

Compared with Tuesday: beef and lamb prices continue weak with veal and calf steady; pork loins 3.00-4.00 higher; hams fully 1.00-2.00 higher; beef chucks continue as forerunners but rounds and rough cuts carrying decline offsetting advances on chucks.

### Steer Beef

Prime 600-900 lb. 91.00-94.00; Choice 600-700 lb. 91.00-94.00, 700-800 92.00-94.00, 800-900 92.00-94.00; Good 500-800 86.00-90.00.

### Heifer Beef

Choice 500-700 lb. 90.00-93.00.

### Calf (Skin Off)

Choice 150-350 lb. 64.00-68.00; Good 150-350 57.00-63.00; Standard 150-350 52.00-59.00.

### Veal (Skin Off)

Choice 90-150 lb. 86.00-94.00; Good 60-90 77.00-85.00; Standard 60-120 72.00-77.00.

### Lamb

Choice and Prime Spring 30-55 lb. 101.00-103.00, 55-65 101.00-103.00.

### Choice Beef Cuts:

Hinds (Steer) 145-190 lb. 103.00-105.00; Arm Chucks 90-105 74.00-77.00; Ribs (7-Rib) 34.40 139.00-150.00; Loins (Trmd) 50-70 140.00-145.00; Rounds (Steer) 70-95 90.00-92.00; Full Plates 52.00-54.00; Hinds (Heifer) 120-170 102.00-104.00.

### Pork Cuts (Fresh):

Loins (Regular) 8-14 108.00-112.00, 14-17 108.00-112.00; Picnics (Regular) 4-8 63.00-67.00; Boston Butts 4-8 88.00-92.00; Spareribs 3 lb. &

## Chambersburg

Chambersburg, PA

June 19, 1975

CATTLE 344. Compared with last Thursday's market; Slaughter cows 25c to \$1 higher. Few Choice 1030-1320 lbs. slaughter steers 47.25-54.75, Good 42.75-47.75, Standard 37.00-43.35, Utility 24.85-34.00. Few Choice 950-1025 lbs. slaughter heifers 37.00-44.25, few Good 33.25-34.00, few Standard 27.80-28.85. Utility & High Dressing Cutter slaughter cows 26.00-28.10, few to 28.85, Cutters 22.50-25.85, Canners 20.25-22.50, Shells down to 15.25. Couple Choice slaughter bullocks 40.25 and 41.00, few Good 28.10-37.25, Standard 27.50-29.85, few Utility 23.50-27.25. Few Yield Grade No. 1 1120-1700 lbs. slaughter bulls 28.10-30.60. Good & Choice 680-900 lbs. feeder steers 34.00-42.50, few Medium 310-520 lbs. 19.00-23.00; few Medium 400-600 lbs. feeder heifers 17.00-21.50; few Medium 370-775 lbs. feeder bulls 20.75-23.50.

CALVES 493. Supply included 50 percent veal calves, 30 percent farm calves, 20 percent slaughter calves. Vealers grading Standard to Choice \$3 to \$6 lower, Utility unevenly steady. Few Prime vealers 60.00-75.00, Choice 48.00-65.00, Good 37.00-49.00, Standard 29.00-37.00, Utility 90-120 lbs. 24.50-30.00, 70-85 lbs. 18.00-24.50; slaughter

Down 135.00-138.00; Hams (Skinned) 14-17 85.00-87.00, 17-20 85.00-86.00.

### Kosher Steer Beef:

Choice and Prime Forequarters 80.00-82.00.

## Green Castle Auction

Greencastle, Pa.

June 23, 1975

CATTLE 204. Compared with last Monday's market, slaughter cows steady to \$1 lower. One Choice slaughter steer 840 lbs. at 48.25. Couple Good slaughter heifers 29.10 and 34.25, few Standard 24.25-26.75. Utility & High Dressing Cutter slaughter cows 24.25-27.00, Cutters 21.00-23.50, few Canners 18.25-21.50, Shells down to 15.00. One Good slaughter bullock at 33.00. Yield Grade No. 1 1150-1500 lbs. slaughter bulls 27.00-29.50, one 31.50; few yield grade No. 2 850-1270 lbs. 23.25-25.85. Few Good 350-500 lbs. feeder steers 26.75-31.00.

CALVES 183. Vealers grading Utility & Standard \$1 to \$2 higher. Few Choice vealers 49.00-54.00, Good 34.50-41.00, Standard 30.00-

calves, Choice 180-260 lbs. 35.00-46.00; Standard & Good 175-280 lbs. 25.00-36.00. Farm calves active, holstein bulls 90-120 lbs. 27.00-38.50; holstein heifers 85-115 lbs. 28.00-39.00; beef cross bulls & heifers 85-105 lbs. 29.00-39.00.

HOGS 82. Barrows & Gilts \$4.50 to \$5 higher. US No. 1-3 200-235 lbs. barrows & gilts 54.60-55.10, No. 2-3 220-250 lbs. 54.25-55.00, few No. 2-4 265-270 lbs. 51.50-52.60, few No. 2-4 185 lbs. 48.25. Few US No. 1-3 280-535 lbs. sows 40.50-46.00. Few Boars 34.50-35.10.

FEEDER PIGS 2. Not enough of any one grade to establish a market.

SHEEP 53. Choice 75-90 lbs. spring slaughter lambs 43.50-53.50, Good 65-80 lbs. 31.00-36.00. Slaughter ewes 8.00-12.00.

33.00, Utility 90-120 lbs. 27.00-31.00, 70-85 lbs. 25.00-29.00. Farm calves fairly active. Holstein bulls 90-115 lbs. 29.00-37.00.

HOGS 20. One lot US No. 1-3 225 lbs. barrows & gilts 58.25, one lot No. 2-3 200 lbs. 56.00, one lot No. 2-4 275 lbs. 51.25. Few US No. 1-3 400-550 lbs. sows 42.75-44.60. Couple Boars 34.75 and 37.25.

FEEDER PIGS 28. US No. 1-3 15-30 lbs. feeder pigs 13.50-18.50 per head, No. 1-3 40-50 lbs. 25.00-34.00 per head.

SHEEP 6. One Choice 75 lbs. spring slaughter lamb at 48.00. Few Slaughter ewes 7.00-11.50.

## Local Grain

Thursday, June 26

These prices are made up of the average prices quoted by a number of participating local feed and grain concerns. It should be noted, however, that not every dealer or broker handles each commodity. All prices are per bushel except ear corn which is per ton.

The average local grain prices quoted Thursday, June 26, are as follows:

	Bid+Offered+
Ear Corn	68.00 75.00
Shelled Corn	2.84 3.09
Oats	
Local	1.60 1.87
Western	— 2.12
Barley	1.58 1.75

+Bid is the price the dealer will buy from the farmer delivered to the mill. Offered is the price the dealer will sell for at his mill.

Lancaster Farming, Saturday, June 28, 1975—5

## Lancaster Feeder

Friday, June 20

Feeder Cattle	
Today	1065
Last Friday	837

TREND: Compared to last Friday feeder steers 1.00-3.00 lower, instances 5.00 lower on Good. Feeder bulls 1.00-2.00 lower.

FEEDER STEERS: Choice 735-850 lb. 39.00-40.50, one lot 600 lb. 38.35; mixed Good and Choice 550-850 lb.

32.00-34.50, few lots 34.50-37.00; Good 435-700 lb. 28.75-30.00, few 700-800 lb. 28.00-31.50.

FEEDER BULLS: Choice 440-700 lb. 24.50-28.75; Good 350-600 lb. 20.10-23.50.

TRY A CLASSIFIED AD

# BALING WIRE

## NOW IN STOCK

### FOR IMMEDIATE DELIVERY

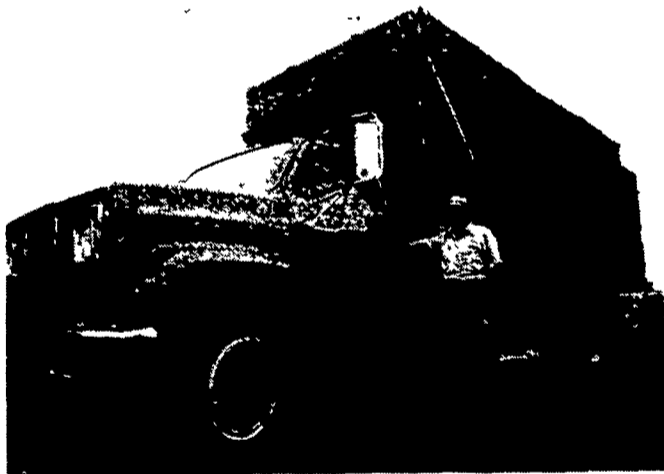
FOR INFORMATION CONTACT

# AGWAY, INC.

ALLENTOWN EQUIPMENT CENTER

Chapman, Pa.

215-395-3381



## EARL GROFF

A familiar sight to Babcock Farms started pullet customers is the friendly face of Earl Groff. Earl is a 10-year employee of Babcock Farms and is responsible for the delivery of our started pullets.

Earl is known as a pullet deliveryman who cheerfully works with our customers. You will like Earl Groff and the 20 week old Babcock started pullets he delivers to you.

## "The Sign of Quality"



The started pullets you purchase are only as good as the program they were grown on. Babcock Farms is dedicated to produce the finest started pullets available to you.

Our pullet growing program is constantly being evaluated. When changes in our program, that will improve pullet performance for our customers, are discovered, these changes become a permanent part of our growing program.

We feel, and our customers tell us, we have made great progress in improving our started pullet program. Our only goal is to provide egg producers with the quality started pullets they must have.

Talk to your Babcock Farms salesman about your next started pullet order. You will like your Babcock Farms started pullets and the people you deal with at Babcock Farms.



P.O. BOX 285 LITITZ, PENNSYLVANIA 17543 TELEPHONE (717) 626-8561

