

# Composite Report

Friday June 27

	Cattle Calves
This week	6000 1300
Last Week	7760 1431
Last Year	4974 1182

**CATTLE:** Slaughter steers 1.00-3.00 lower with late sales mainly 2.00-3.00 lower; cows uneven, Utility 50-75 lower, Canner and Cutter 1.00-2.00 lower; bullocks closed the week 2.00-3.00 lower; bulls steady to 1.00 lower. Supply included an estimated 45 percent slaughter steers, 10 percent cows, 15 percent bulls with the balance mainly feeder steers.

**SLAUGHTER STEERS:** High Choice and Prime 1050-1350 lb. 53.50-56.00 with sales on Monday up to 58.85; Choice 1000-1350 lb. 50.00-54.50, 900-1050 lb. 48.00-52.00; high Good and low Choice 1000-1275 lb. 46.75-51.00, 850-1000 lb. 44.00-49.00; Good 41.00-47.00; Standard and low Good 32.00-41.50; Utility and low Standard 925-1150 lb. 24.25-30.00.

**SLAUGHTER HEIFERS:** Choice 800-1025 lb. 40.25-45.00, few 45.00-48.00; Good 34.25-40.00; Standard 32.00-38.00.

**COWS:** Utility and high dressing Cutter closed the week at 23.00-26.50, few 26.50-27.50; Cutter 21.00-23.75; Canner and low Cutter 18.00-21.00.

**BULLOCKS:** Choice 35.00-41.00, few mainly early part of week 41.00-42.75; Good 31.00-37.75 with some late sales 26.50-30.00.

**BULLS:** Yield grade 1 1100-1700 lb. 28.50-31.75, few 32.00-33.50; several 1200-1700 lb. block bulls 33.00-38.00, few 38.00-39.50; yield grade 2 1000-1400 lb. 27.00-29.50.

**VEAL CALVES:** Vealers 2.00-4.00 lower although Standard and low Good steady to 2.00 lower.

**VEALERS:** Prime 60.00-67.00; Choice 45.00-55.00; Good to low Choice 40.00-46.00; Good 32.00-40.00; Standard and Good 85-110 lb. 20.00-30.00 with late sales mainly 20.00-25.00, 70-85 lb. 15.00-25 with late sales mainly 15.00-20.00.

**RETURNED TO FARM:** 100 head 100-115 lb. graded Holstein bulls 43.00-46.00, one lot 120 lb. 40.00, 90-105 lb. 28.00-35.50; 44 head 90-115 lb. Holstein heifers 26.00-28.00.

# HOG PRICES

## Lancaster Market

June 23, 1975

**HOGS:** Barrows and gilts 4.00 higher.

**BARROWS AND GILTS:** US 1-2 200-240 lb. 58.60-58.85; Few lots US 1 205-235 lb. 59.00-59.50; US 2-3 200-255 lb. 57.75-58.50; Few 240-260 lb. 57.25-57.50.

## Vintage Auction

June 21, 1975

**HOGS 663:** Compared with last Saturday's market. Barrows & Gilts: \$6 to \$6.50 higher. US No. 1-3 200-245 lbs. 58.25-58.50, lot 58.85, No. 1-3 200-255 lbs. 57.50-58.00, No. 2-3 185-265 lbs. 56.50-57.25, No. 2-4 (lot 275 lbs.) 55.50, No. 1-3 170-180 lbs. 46.75-48.00. US No. 1-3 375-590 lbs. sows 40.25-45.50, 2 head 312 lbs. 50.25. Few light weight Boars 46.50-51.00.

June 25, 1975

**HOGS 850:** Compared with last Wednesday's market. Barrows & Gilts \$4 to \$4.50 higher. US No. 1-2 200-240 lbs. 59.00-60.00, No. 1-3 200-250 lbs. 58.50-59.00, No. 1-3 170-190 lbs. 55.00-58.00. US No. 1-3 300-550 lbs. 42.00-46.00. Light Weight Boars 35.50-42.00.

## Lancaster Auction

June 25, 1975

**HOGS:** Barrows and gilts very uneven, few early sales US 1 & 2 steady to 50 higher; bulk of trading 2.00-2.50 lower.

**BARROWS AND GILTS:** Few US 1 200-240 lb. 59.50-60.00; Early sales US 1-2 200-230 lb. 58.60-59.35; Early sales US 2-3 200-240 lb. 58.00-58.60; Bulk US 2-3 200-240 lb. 55.50-57.00; Few 230-260 lb. 54.25-55.50.

## New Holland Auction

June 23, 1975

**HOGS 1526:** Compared with last Monday's market. Barrows & Gilts \$5 to \$5.50 higher. US No. 1-2 200-240 lbs. 59.00-60.25, No. 1-3 200-250 lbs. 58.25-59.00, No. 2-3 240-280 lbs. 56.00-58.25, No. 1-3 170-190 lbs. 55.00-58.25. US No. 1-3 300-575 lbs. sows 41.50-47.00. Boars: 39.50-49.50.

## Leb. Valley Auction

**HOGS 429:** Barrows and gilts \$5 to \$6 higher. US. No. 1-3 195-240 lbs. barrows and gilts 58.85-60.00, No. 2-3 180-260 lbs. 57.75-59.10, No. 2-4 240-300 lbs. 52.75-56.85. US No. 1-3 300-500 lbs. sows 40.00-45.50. Two Boars 32.00 and 32.50.

**FEEDER PIGS 30:** US No. 1-3 25-35 lbs. feeder pigs 22.00-29.00 per head, lot No. 1-3 75 lbs. at 45.00 per head.

## Indianapolis Auction

June 26, 1975

**HOGS: 2000** Barrows and gilts fairly active, unevenly 25-1.00 lower, many 50-1.00 lower.

**BARROWS AND GILTS:** U.S. 1-2 200-240 lb. 59.00-59.25, 120 head 59.25; US 1-3 200-250 lb. unevenly 58.00-59.00, many 58.50.

## St. Louis Auction

June 26, 1975

**HOGS: 4000** Barrows and gilts active, mostly 1.00 higher. **BARROWS AND GILTS:** US 1-3 200-250 lb. 59.50-60.00.

## Peoria Auction

June 26, 1975

**HOGS: 3500** Trading fairly active after a very slow start. Barrows and gilts uneven and mostly steady.

**BARROWS AND GILTS:** US 1-2 200-230 lb. 59.00-59.50; 56 head US 1 59.75; US 1-3 200-240 lb. 58.50-59.00; US 2-3 240-250 lb. 57.50-58.50, 250-260 lb. 56.50-57.50, 260-280 lb. 55.50-56.50; US 3-4 280-320 lb. 53.50-55.50.

# Futures Trading

(Closing bids as of Thursday, June 26)

	Chicago Cattle	Chicago Hogs	New York Maine Potatoes	Chicago Fresh Eggs
July		55.55		44.90
August	48.30	53.45		49.00
September				57.10
October	43.10	48.50		55.50
November			5.83	59.00
December	41.70	47.85		60.90
January 1976				51.30
February	41.15	47.10		
March			6.85	

Trend — Cattle are Stronger, Hogs are Mixed, Potatoes are Stronger, and Eggs are Stronger.

Markets Provided by Commodity Department Reynolds Securities, Inc.

# Chicago Grain Futures

(Closing bids as of Thursday, June 26)

	Corn	Wheat	Soybeans	Soybean Meal
July	2.83	3.07½	5.22	121.00
September	2.59¼	3.13½	5.07½	123.00
October				125.10
November				
December	2.42¾	3.24¼		127.50
January 1976			5.14¼	129.00

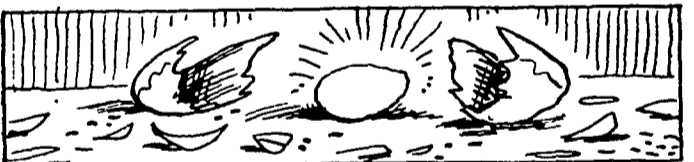
Trend — Corn is Lower, Wheat is Lower, Soybeans are Stronger, and Soybean Meal is Lower.

Markets Provided by Commodity Department Reynolds Securities, Inc.

# U. S. Inspected Livestock Slaughter

Estimated Daily Livestock Slaughter Under Federal Inspection

	CATTLE	HOGS	SHEEP
Week to Date	516,000	871,000	116,000
Same Period Last Week	516,000	942,000	118,000
Same Period Last Year	500,000	1,012,000	113,000



"The world is in a bad way when an egg falls and breaks the bowl." African Proverb

Good friends are for keeps . . . we value your friendship and business. Thank you.

## S. K. SHOTZBERGER, INC.

LIVESTOCK TRANSPORTATION

Gene Zwally, President  
Marvin Johns, Secy-Treasurer

P.O. Box 925, Lancaster, Pa. 17604  
Phone: 393-4641 (day or night)

# EXCESSIVE SHRINK COSTS \$\$ AT J.M. HOOBER INC.

There is no waiting in long hot lines. Immediate unloading. Immediate penning and care of all livestock. Concerned service for truckers, sellers and buyers.

## J. M. HOOBER INC.

Let us sell your feeder pigs. We will supply free state ear tags, thus saving you 25c per head.

## Lancaster Stockyards

PLEASE CALL SOON  
Phone (717) 397-6191,  
569-2084, 626-5659.

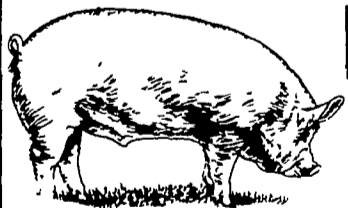
## TRY A CLASSIFIED

### RAY HARBOLD



ONE STEP HAULING

717-367-4036  
Elizabethtown, PA 17022



# NEXT FEEDER PIG SALE TUESDAY, JULY 8th



Consign all your feeder pigs to Walter M. Dunlap & Sons where they will be handled by a capable and experienced staff.

## WALTER M. DUNLAP & SONS

LANCASTER STOCK YARDS

Consignors can get state tags at our office, thereby saving 25c marketing expense.

For Further Information, Call 717-397-5136



## FOR BETTER NET RETURNS

SHIP TO THE

## DANVILLE LIVESTOCK MARKET

Old Rt. 11 Danville, Pa.  
Phone (717) 275-2880

SALE EVERY MONDAY 2 P.M.

OWNERS

Charles C. Myers  
(717) 569-2106

Melvin M. Lehman  
(717) 964-3621