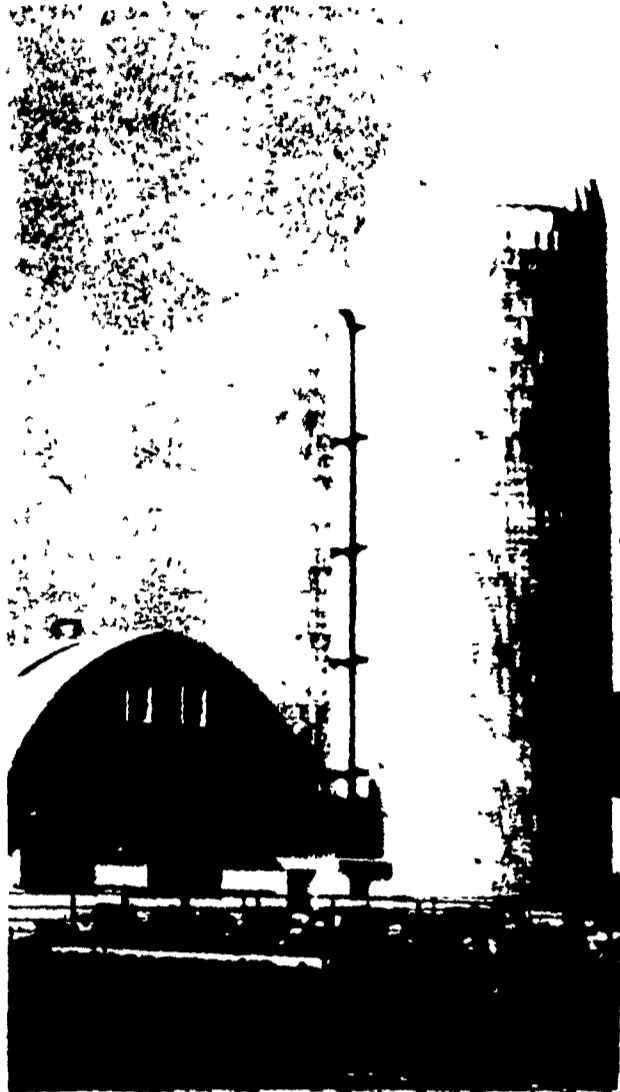


TERRE HILL SILOS TRI-RIB CONCRETE STAVE SILOS



More Quality More Strength More Economy

Silos
Silo Unloaders

Bunk Feeders
Liquid Manure Tanks

TERRE HILL SILO CO., INC.

Terre Hill, Pa. 17581

Phone 215-445-6736

Quality & Service Since 1927

May Order 4 Milk Price Set At \$8.75

Minimum order prices for payment to producers supplying the Middle Atlantic Order market during May 1975 of \$8.75 per hundredweight for base milk and \$8.87 for excess milk were announced last week by the Market Administrator, Joseph D. Shine. The weighted average market price for May is \$8.49. The base milk price was \$8.62 in April 1975 and \$9.62 in May 1974. The butterfat differential for milk testing above or below 3.5 percent is 8.0 cents per point.

Receipts from producers during May totaled a record 432.7 million pounds, the Administrator reported. This represents an increase of 10.1 million pounds or 2.4 percent from May 1974. There were 7,659 producers supplying the market in May, and the average daily delivery was 1,822 pounds per producer, a gain of 96 pounds or 5.6 percent from a

year ago. Mr. Shine reported that the gross value of May producer milk was \$38.8 million.

A total of 253.9 million pounds of producer milk or 58.67 percent of total producer deliveries was utilized for Class I in May 1975 compared to 243.0 million pounds and 57.51 percent a year ago. There was slightly less Class II producer milk this May than last year.

Base milk accounted for 86.1 percent of total producer deliveries for the month compared to 83.9 percent in May 1974, Mr. Shine reported.

Order No. 4 handlers reported Class I sales of 206.0 million pounds within the marketing area during the month, down 2.6 percent from April (on a daily average basis) but 2.6 percent above May 1974 sales.

Milk Production Up

Milk production in Pennsylvania during May was 656 million pounds up 0.5 percent from a year ago, according to the Crop Reporting Service.

The number of milk cows in the Commonwealth during May was 687,000 - 1,000 fewer than last month, but the same as May a year ago.

Milk produced per cow averaged 955 pounds in May, up 5 pounds from a year earlier, and 25 pounds above May 1973.

United States milk production during May is estimated at 10,789 million pounds, down 0.5 percent from a year earlier. U. S.

average milk production per cow was 968 pounds, up 1 pound from a year ago and 11 pounds above May 1973. Milk cows on farms were estimated at 11,150,000 head, down 1 percent from a year ago. Milk cows declined 26,000 from April, the largest month-to-month drop since January 1974.

Guernsey Cow Has High Record

Naeflands Kebbie, a milking, according to The thirteen-year-old Registered American Guernsey Cattle Club.

Raymond & Louise Witmer, Penn-Del Farm, Willow Street, PA, has completed an official DHIR actual production record of 14,170 pounds of milk and 705 pounds of butterfat, in 305 days two times a day PA.

Guernsey milk is world famous for its high protein, delicious flavor and golden yellow color. The testing was supervised by Pennsylvania State University, University Park.

We Specialize In

- Aerial Ladder Barn Painting
- Specialists In High Work
- Church Steeples Restored
- Sandblasting



F. R. BEHM & SONS, Contractors

P.O. Box 652 - Lititz, PA
Phone 626-8528

OR

J. S. GERBERICH, Palmyra

Sales Representative, Phone 838-1825

I would like a FREE ESTIMATE
 I would like FREE INFORMATION

NAME

ADDRESS

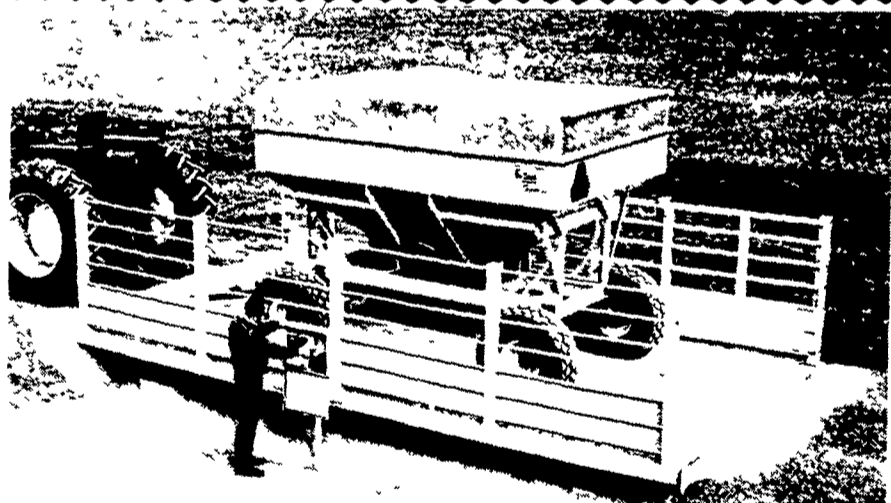
CITY

STATE

ZIP

Phone

DIRECTIONS OF YOUR FARM OR CHURCH LOCATION



Farm & Commercial ELECTRONIC PLATFORM SCALES

■ Easy to install

■ Low in cost

■ Fast, easy to use

■ Accurate, dependable

WEIGH-TRONIX

Capacities from 10,000 to 60,000 lbs.

SHENK'S FARM SERVICE

R.D.4, LITITZ

PHONE 626-1151

COMPLETE FARM PAINTING



WE USE BRUNING QUALITY
PAINT AND IT
DOES STAY ON!!!

AERIAL LADDER
EQUIPMENT:

- * Modern and Efficient Method
- * Reasonable Prices
- * Spray-On and Brush-In Method
- * Sandblasting if Necessary

FOR FREE ESTIMATES
WRITE:

DANIEL S. ESH

(C RALPH MILLER)

717 687 9155

SPRAY-ON AND

BRUSH-IN PAINTER

BOX 350A

RONKS PA

17572

FRESH
COWS

EVERY
WEDNESDAY IS

SPRINGERS



DAIRY DAY

AT NEW HOLLAND SALES STABLES, INC.
New Holland, PA

If you need 1 cow or a truck load, we have from 100 to 200 cows to sell every week at your price. Mostly fresh and close springing Holsteins.

Cows from local farmers and our regular shippers including Marvin Eshleman, Glenn Fite, Gordon Fritz, Blaine Hoffer, Dale Hostetter, H. D. Matz, and Jerry Miller

SALE STARTS 12:30 SHARP

Also Every Wednesday, Hay, Straw & Ear Corn Sale 12:00 Noon.

For arrangements for special sales or herd dispersals at our barn or on your farm, contact

Abram Dffenbach, Mgr.

717-354-4341

OR

Norman Kolb

717-397-5538

HEIFERS

STOCK
BULLS

LARGE DISPERSAL

AT HEYER BROS. CIRCLE LANE FARM

Just off Rte. 6 at Wysox, Pa.

TUESDAY EVE., JULY 1ST AT 6:30 SHARP!!

201 GOOD HOLSTEINS - 4 COLORED ANIMALS

A good place to select replacements 140 cows (about 1/2 are just fresh, 40 dry cows, balance year-round freshening) - Herd sire - balance all-age hfrs. Excess farm machinery such as tractors, chopper, s.u wagon, elevators, etc. All dairy-related items including 60-cow pipeline DeLaval milker complete, 2 barn cleaners (16" w-300' chain each), 550 gal Esco tank, Crane concrete 24x60 silo, "Big Jim" 24' unloader, many, many dairy items. Owned by Heyer Bros., Circle Lane Farm For information or to have full list mailed you, write Rumsey Sales, Bath, NY. (607-776-3478)