

Juniata Co. - steer & chicken farm of 160 acres (130 acres tillable) 20,000 broiler operation large five bedroom house. All buildings in good condition.

Snyder Co. - 13 acre farmette. Frame house in good condition. Near Selinsgrove. Well and stream.

Perry Co. - dairy with buildings in fair condition bulk tank included

Lebanon Co. - 83 acres near Hershhey. No buildings about 50 A woodland 33 A tillable. Offers accepted.

WE HAVE FARMS FOR SALE IN NORTHUMBERLAND, PERRY, JUNIATA, SNYDER AND LANCASTER COUNTIES.

Whether you are interested in buying or selling please give us a call and we will be more than happy to pay a personal visit with you.

**CHRISTIAN M. MOSEMAN** Realtor  
734 Main Street, Akron, Pa. 17501  
Office Phone 859-1004 or 733-1224

**Real Estate**

Virginia Farms For Sale  
**GRADE A DAIRY**  
900-plus acres (350 till.) attrac. Col. home, modernized tenant house, full compl. bldgs. with double-six milk parlor and lge. bulk tank. Realistically priced. Wide selection of other fine dairy, beef, and grain farms avail. throughout Virginia. Contact Allen See, with:

**COLONY I LAND & AUCTION CO.** REALTORS  
Box 2068, Staunton, Va. 24401  
Dial 703/885-7203 (after hours 886-4452)

**classified ads**

PHONE 717-394-3047 or 717-626-2191

**Real Estate**

**SAFE BUY REAL ESTATE AGENCY INC.** We serve the Dundee area - farms, land, homes and businesses. 5 Water Street, Dundee, New York 14837 607-243-7724

**For Rent**

Farm and Home Center Lancaster, Pa. For Rent - Modern Office Space (2100 and 2600 sq. ft. areas) Incl. pvt. offices, heat, air cond., parking and janitor service - avail. Nov. 1. PHONE: 392-4911

**Real Estate**

208 acre modern hog farm, farrow to finish, 4,000 head annually. Harold Fries, P.O. Box 149, Bedford, Pa. 15522. 814-623-9223.

**Pets**

**RAINBOW KENNELS**  
**AKC Stud Service**  
**HOME OF QUALITY**

- Belgian Sheepdog
- Border Collies
- Shetland Sheepdog
- Irish Setters
- Peekapoos
- Cockerpoos
- Pekinese
- Poodles
- American Cocker Spaniel
- 663 Old Baltimore Pike Newark, Del. 1-302-737-6526

**Help Wanted**

**Herdsmen-Milker** wanted for large dairy. Must be capable of assuming full responsibility of operating automatic take-off parlor for 1 shift. Must be a good milker and able to detect herd health problems. 5 1/2 day week, paid holidays and vacation, hospitalization, attractive pension plan. Salary open but in \$10,000. per year range. Fairmount Farms, Inc., Hampstead, Md. 301-239-7221.

**Dairyman** wanted, experienced worker needed on large dairy farm. House with heat and electric supplied, plus other benefits. Write Box 266E, co Lancaster Farming, Lititz, Pa. 17543.

**HERDSMAN**

For well-known registered Holstein herd in Western Pennsylvania.

Would have responsibility for milking, feeding and caring for select group of cattle. No field work. Paid vacation hospitalization housing and time off included. Starling salary dependent on experience and ability.

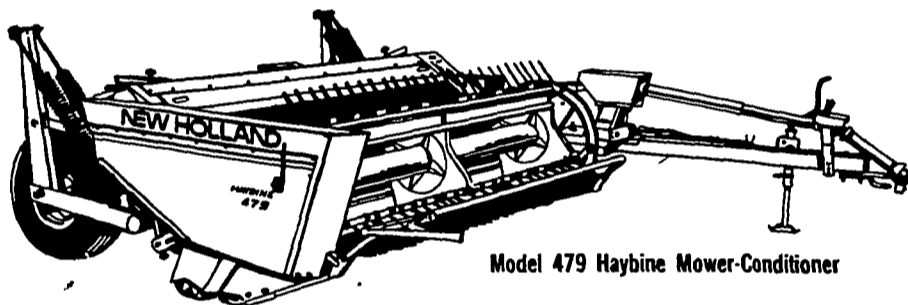
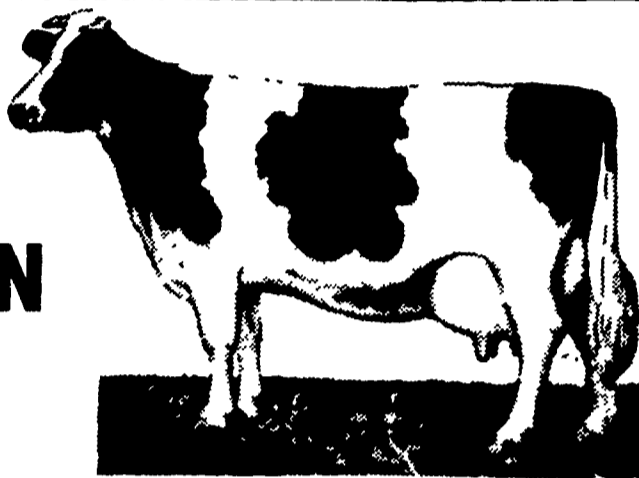
For Details, Call -412-463-3425 After 7 P.M. Or Write: Box 266D c/o Lancaster Farming Lititz, PA 17543

**FERTILIZER**

Are you tired of paying \$150 to \$200 or more per ton for fertilizer? Try dry poultry manure fresh from the broiler houses. Delivered and dumped on your farm in 8 to 16 ton loads within 50 miles of Lancaster. You can buy 8 to 100 tons. Next delivery in Aug. \$25.00 per ton delivered. Write Box 27, Strasburg, Pa. 17579

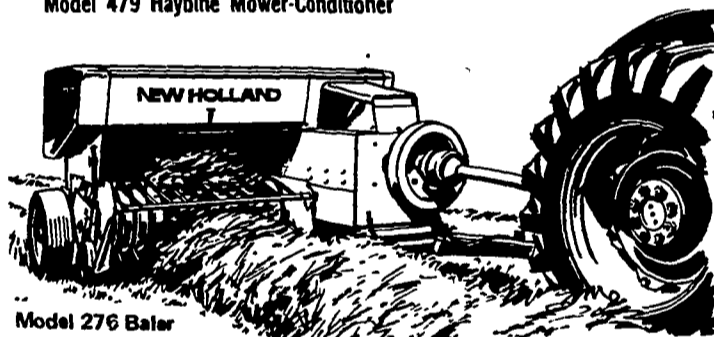
**Help Wanted**

**WE SALUTE ALL DAIRYMEN OF LANCASTER AND SURROUNDING COUNTIES**



Model 479 Haybine Mower-Conditioner

**BALERS HAYBINES RAKES MOWERS**



Model 276 Baler

**WE WELCOME YOU TO STOP IN AND SEE OUR COMPLETE LINE OF NEW AND USED EQUIPMENT.**



**WE'RE YOUR LUBRICATION HEADQUARTERS**

**USED EQUIPMENT**

- Farmall 806D
- Case 300 w/Hydraulic Loader
- Farmall 240
- Int. 454 3 Pt. Hitch
- I.H. 424 w/Loader
- 650 Harvester w/Screen Pickup Head
- N.H. 1469 Self Propelled Haybine
- Badger Self Unloading Wagon
- Smoker Elevator 24 and 30 ft.
- Case 9 ft. offset disk
- Sauder Loader
- I.H. 550 Plow 5-16"
- Midwest Lift Harrow Fits 12 ft. Disk
- Brillon 12 ft Harrow

**LAWN & GARDEN**

- 60 Cadet
- 700 Wheel Horse
- 7 H P Cadet
- 8 H P Moto-Mower

1 - 1890 IH Truck Conventional - 16 Ft. Bed, Clean



**MESSICK FARM EQUIPMENT INC.**

2750 N. MARKET STREET

PHONE 367-1319;

ELIZABETHTOWN, PA

JOHN KREIDER HOME 367-6039

WARREN SPICKLER HOME 653-4560

**THE JOHN F. COPE CO.**

Needs Part-Time  
General Mechanic and General Electrician  
with journeyman qualifications.

**ALSO**

Picker Operators and  
Processing Supervisors.

**WANTS TO BUY OR RENT**

**INTERNATIONAL FARM TRACTORS**  
Models 706 or 656 or equivalent makes.

**CALL 717-569-7091**

**WANTED EXPERIENCED SEWING MACHINE OPERATORS**

FOR OVERLOCK YOKE SETTING AND SIDE CLOSING

CALL OR APPLY

**HOPELAND MFG. CO., INC.**

HOPELAND, PA  
PHONE 733-2681