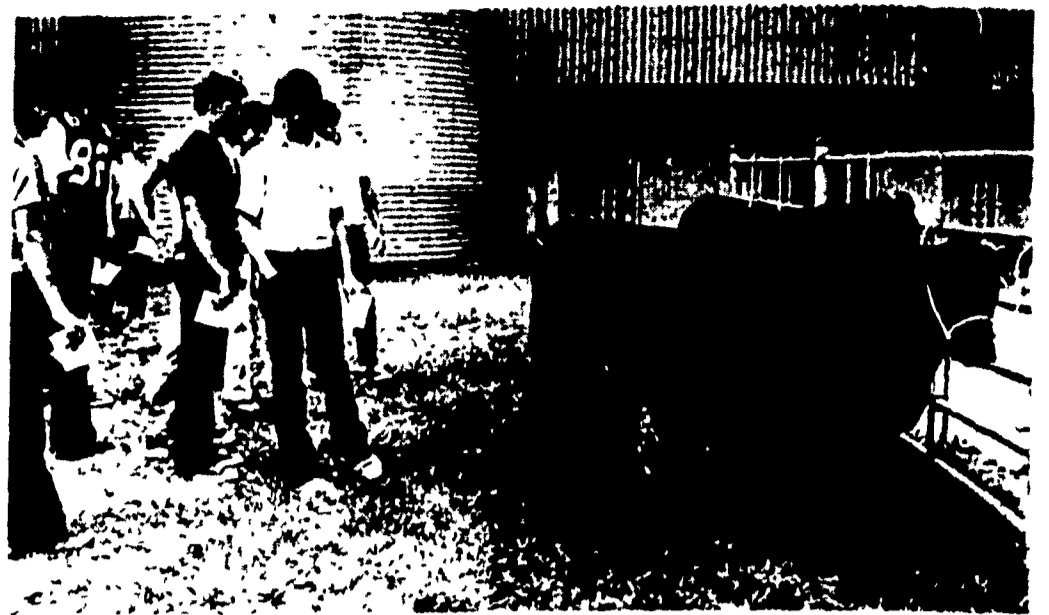




Suitcases in tow, members of the Grassland Environmental FFA wait for their room assignments during FFA Week Registration.



One of the most attended of all the FFA contests was the livestock judging which saw nearly 200 youngsters testing their abilities at judging beef, sheep and swine.

Grassland FFA Members Elected To State Offices

[Continued from Page 1]

Leonard Greek, Red Lion, 22nd (silver); Lewis Witmer, Penn Manor, 23rd (silver); Mike Weaver, Oxford, 24th (silver); Evlin Weaver, Pequea Valley, 30th (bronze); Robert Aander, Solanco, 35th (bronze); Harold Mogel, Conrad Weiser, 36th (bronze).

Conservation Public Speaking: Dave Ampacher, Red Lion, 4th (gold) and Dean Heisey, Eastern

Lebanon, 5th (gold). Small Gas Engines: Steve Foltz, Dover, 1st (gold); Chris Shearer, Dover, 2nd (gold); Jay Oberholtzer, Ephrata, 4th - (gold); Curtis Martin, Ephrata, 5th - (gold); Randy Lowe, Kennard-Dale, 9th (silver); Richard Martin, Garden Spot, 10th (silver); Bruck Rambler, Lebanon AVTS, 11th (silver); Dean Weiler, Garden Spot, 12th (silver); William Wenrick, Lebanon

AVTS, 16th (bronze); Leslie Hare, Kennard-Dale, 21st (honorable mention); Merle Gruber, Elizabethtown, 22nd (honorable mention).

Small Gas Engines: Team Competitions, Dover High School placed 1st, Ephrata 2nd and Garden Spot - 3rd.

Meats Judging: Dennis Kulp, Manheim Central, 5th (silver); Clifford Martin, Ephrata, 6th (silver); Darryl Martin, Ephrata, 7th

[Continued on Page 19]

Feterl has a better way to feed roughage

Rufeeder

Designed for all types of roughage. It is ideal for silage, baled hay, cubed hay, ground hay, field green chopping and chaff. The new RUFEEDEER is 20 feet long, and on a free choice basis can handle approximately 70 head. ●Feed capacity—375 cubic feet. ●Mounted on special low profile heavy-duty gear. Made of quality steel and treated plywood.

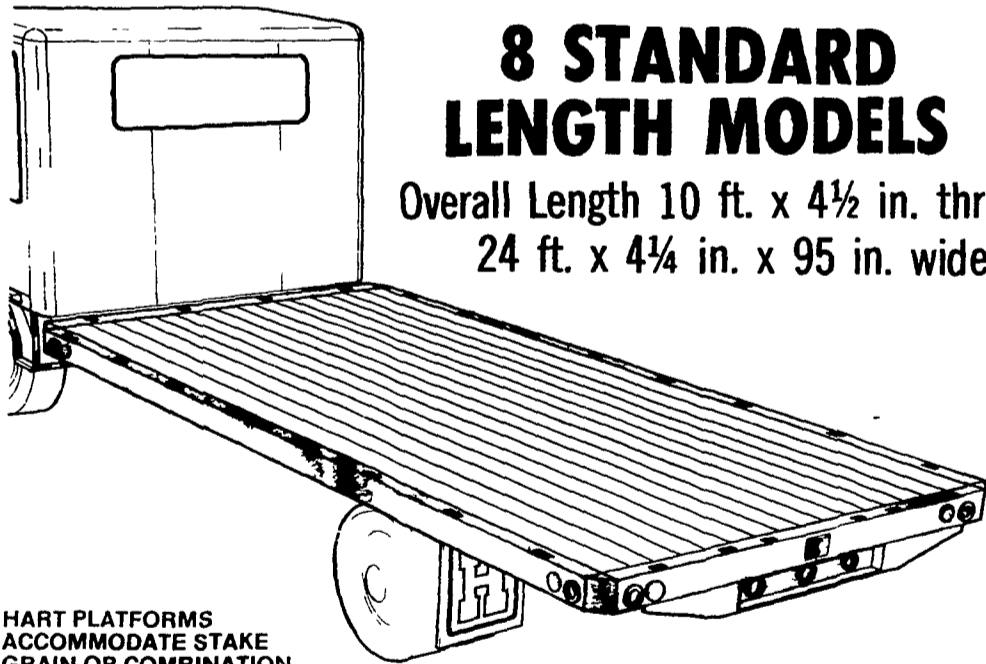
**Cornell Barn Cleaner • Roll-A-Bout Feeder
Van Dale Silo Unloader & Cattle Feeders**

HERMAN L. BASHORE
R.D. 2, Annville, Pa. 17003 865-4053

RIPCO

HAS ALL THE EQUIPMENT YOU NEED FOR FARM HAULING

Start with a Hart Universal Standard or Heavy Duty Platform.



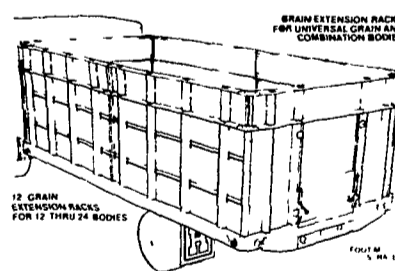
HART PLATFORMS ACCOMMODATE STAKE GRAIN OR COMBINATION PANEL ASSEMBLIES

RECTANGULAR TUBE LONG SILL

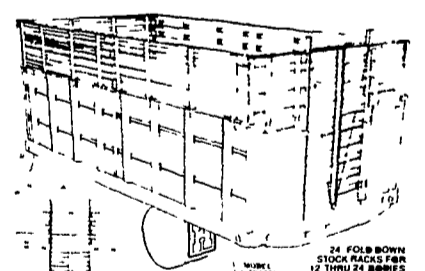
8 STANDARD LENGTH MODELS

Overall Length 10 ft. x 4½ in. through 24 ft. x 4¼ in. x 95 in. wide

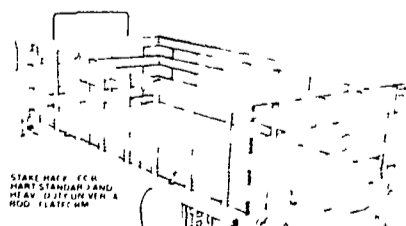
Add any of the following Racks and Bodies to Fit Your HAULING Loads.



HART GRAIN EXTENSION RACKS for Universal Grain and Combination Bodies

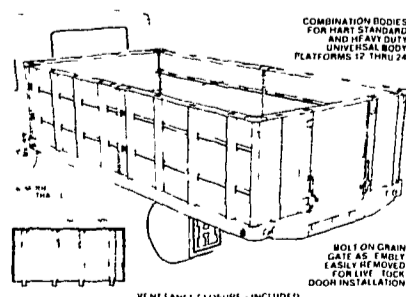


HART UNIVERSAL FOLD-DOWN STOCK RACKS WITH LIVESTOCK DOOR



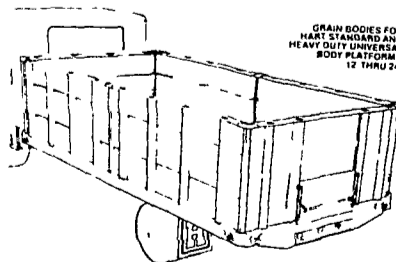
HART UNIVERSAL STAKE RACKS

Bolt on connections offer side rack arrangements



HART UNIVERSAL COMBINATION BODY

Bolt on Grain Gate assembles easily. Removable for livestock door installation



HART GRAIN BODY



COMPLETE SALES AND SERVICE CONTACT

RIPCO inc.
OXFORD PENNSYLVANIA
AIR SYSTEMS

MAKE BULK HANDLING A BREEZE

(215) 932-9522

251 S. THIRD ST.
OXFORD, PA. 19363