

Poultry Market Reports

WEEKLY NEW YORK EGG MARKET

	Tuesday, June 9 to Friday, June 13				Fri.
	Mon.	Tues.	Wed.	Thurs.	
WHITE					
Ex. Large	52	54	54	56	56
Large	49	50	50	52	52
Mediums	40	40	40	43	43
Pullets	31	31	31	34	34
Peeweeks	22	22	22	25	25
BROWN					
Large	52	53	54	55	56
Mediums	Unquoted				
Pullets	Unquoted				
Peeweeks	Unquoted				

	Off Grade				Fri.
	Mon.	Tues.	Wed.	Thurs.	
Large	44	45	45	47	47
Checks	31	31	31½	32	32

Tone — Steady to Firm.
Copyright 1975 Urner Barry Publications

NEW ENGLAND WEEKLY SHELL EGG REPORT

Tuesday, June 10, 1975

Prices paid per dozen Grade "A" brown eggs in cartons delivered to retail stores:

EX LARGE LARGE MEDIUM SMALL

MASS+				
Mostly				
NEW HAMP		No market report		
Mostly		available at press time.		
R. I.				
VERMONT				
Mostly				
MAINE				

+ Includes Central and Western Sections Only.

Omaha Cattle

June 12

Weekly 51 cattle compared with last week's close: Choice and Prime 1125-1325 lb. steers closed 1.50-1.75 higher, instances 2.00 up. Other steers unevenly steady to 1.00 higher, a few standard and low-Good Holsteins weak to 50c lower late. Heifers 50-1.00 higher, few high-Choice and Prime 1.50-2.00 higher. Cows 2.00-2.50 lower. Best demand for Utility and Commercial. Bulls weak.

Four day receipts 17,300 as compared 18,800 previous week and 20,500 a year ago. Slaughter steers approximately 48 percent, heifers 32 percent, a large share both classes good to average-Choice. Cows 17 percent.

STEERS: Two loads high-Choice and Prime 1275 lbs. yield grade 4 55.50, modest volume Choice and Prime 1141-1345 lbs. yield grade 3-4 54.00-55.00 during week. Choice 1125-1325 lbs. yield grade 2-4 closed 52.50-54.00,

Choice 975-1125 lbs. mainly yield grade 3 50.00-53.00. Mixed Good and Choice 950-1250 lbs. 48.50-51.25. Good these weights 44.50-48.50. Standard and low-Good Holsteins yield grade 2-3 37.00-42.50 late.

The average of LS-214, detailed quotations for Choice 900-1100 lb. steers this week 51.10, Choice 1100-1300 lbs. 52.10.

HEIFERS: Two loads high-Choice and Prime 906-975 lbs. yield grade 3-4 53.00. Modest volume Choice and Prime 916-1111 lbs. yield grade 3-4 51.00-52.00. Choice 850-1050 lbs. yield grade 2-4 closed 48.50-51.00. Mixed Good and Choice 750-975 lbs. 46.50-48.50, occasionally 49.00. Good 40.00-46.00. Standard and low-Good 35.00-39.00.

COWS: Utility and Commercial 21.00-23.50, latter price mainly for Utility dairybreds. Canner and Cutter 15.00-21.00, mixed Cutter and low-Utility 21.25-21.50. Shelly Canner 13.00-14.50.

Philadelphia Eggs

Thursday, June 12

Prices steady. Cartoning demand fair to good where featured involvement offered. Extra large barely adequate, large and mediums adequate. Undertone steady.

Prices to Retailers: Sales to volume buyers, consumer grades white eggs in cartons, Delivered: Store Door; A Extra Large 54-56½, A Large 53-55½, A Medium 42-43½.

St. Louis

Auction

June 12

Receipts	8,300
Last Week	8,700
Year Ago	6,700

Compared to last Tuesday, Choice and Prime Slaughter Steers and Heifers 50-1.00 higher Good and Mixed Good and Choice Steers and Heifers steady. Cows and Bulls generally steady. Supply near 40 percent Slaughter Steers, Good and Choice 900-1200 lbs. yield grade 2-4 with near 23 percent Heifers; Cows 15 percent; Feeders 20 percent.

SLAUGHTER STEERS: Two loads and part load Choice including Prime 1150-1225 lbs. yield grade 3-4 51.75-52.50; Choice 1000-1300 lbs. yield grade 2-4 49.50-51.50; mostly Choice 900-1050 lbs. 47.00-50.00. Few mixed Good and Choice 750-950 lbs. 42.00-45.00; mixed Good and Choice 900-1300 lbs. 46.00-49.50. Good 41.00-46.00. Standard and Good Holsteins 1100-1500 lbs. 38.00-42.00. Few mostly Standard 900-1100 lbs. 35.00-38.00.

SLAUGHTER HEIFERS: Two loads Choice including prime 950-1000 lbs. yield grade 3-4 50.25. Choice 850-1050 lbs. yield grade 2-4 47.50-49.50, mostly 48.00-49.50. Mixed Good and Choice 800-1050 lbs. 44.00-47.50, few Good and Choice 650-850 lbs. 38.00-42.00. Good 800-1100 lbs. 40.00-44.00.

COWS: Utility and Commercial closing 20.00-24.00, few 25.00, consignment high yield Utility 26.00 on Monday. Cutter 15.00-20.00. Canner 12.00-15.00.

BULLS: Yield grade 1-2 1100-1600 lbs. 23.00-27.00, few yield grade 1 1600-1800 lbs. 28.00. Consignment Choice Bulls 1100 lbs. 35.00.

Eastern PA & NJ

Live Hen Report
Wednesday, June 11

Prices unchanged to higher on light type hens. Demand good for light offering of Light Type Hens. Offerings of Heavy Type Hens short of a fair but unaggressive call. Prices paid at farm: Light Type Hens 4-6, mostly 5½-5¾ in PA, mostly 5-5½ in NJ. Heavy Type Hens TFEWR.

Baltimore USDA Report

June 9

Cattle 475. Limited sales slaughter steers & heifers firm to \$1 higher, balance held for AM auction.

STEERS: Choice yield grade 2-4 1000-1185 lbs. 49.00-52.00; Good & Choice 47.00-49.00; Good 44.00-47.00; Standard & low Good 850-1370 lbs. 35.50-42.00. HEIFERS: Good & Choice yield grade 2-4 800-920 lbs. 41.00-42.00; Good 700-1050 lbs. 37.75-40.00.

HOGS 750. Barrows & Gilts 50c to 75c instances \$1 higher. US No. 1-3 200-240 lbs. 48.50-48.75, 75 head 49.00, No. 2-3 230-260 lbs. 48.00-48.50, No. 2-4 250-280 lbs. 47.00-48.00.

SOWS: Steady. US No. 1-3 300-600 lbs. 37.50-38.50.

VEALERS: Few High Choice 30.00-33.00. Good and Choice 22.00-30.00.

FEEDERS: Including near 1500 at Thursday auction. Feeder Steers and Heifers 1.00-3.00 higher with the most advance on Steers under 600 lbs. and Choice Heifers over 500 lbs. Supply Good to mostly Choice 400-800 lb. Steers and 400-600 lb. Heifers, with a moderate showing Good and Choice 150-300 lb. Steer and Heifer Calves.

STEERS: Choice 367-500 lbs. 33.25-36.50. Few Choice 500-600 lbs. 33.00-36.00. Choice 600-850 lbs. 35.00-39.25, small lot Choice Flesh 700 lbs. 40.25. Mixed Good and Choice 400-600 lbs. 25.25-30.00. Good to mostly Choice 674-725 lbs. 32.50-36.75. Standard and Good Holsteins 585-834 lbs. 20.00-24.25.

NEST RUN EGGS

Prices are from Egg Clearinghouse, Inc., (ECI) Durham, N.H. and reflect trading prices for gradeable nest run eggs (GNR) on ECI, a nationwide trading center for producers, packers and marketers. GNR eggs are classified by weight in 30-dozen cases, and traded in lots of either 300 or 750 cases. Prices are FOB buyers dock, and are computed Tuesday and Thursday of each week. This week's prices for each classification were:

Classification	New Weight Per Case	Tuesday	Thursday
		0	0
Extra Large	51 lbs.	41	43
Class 1 - Large	48 lbs.	35	36
Class 3 - Medium	42 lbs.	28	29
Class 4 - Small	39 lbs.	38	38
Breaking Stock	48 lbs.	32	32
Checks	48 lbs.		

Delmarva

Broiler-Fryer Market
Thursday, June 12

Ready to cook movement continues fairly good though occasionally less aggressive than a week ago. Slaughter schedules increased higher for late week needs. Today's less than trucklot asking prices generally 1 cent higher on both plant and US Grade A. Advance interest fair to good. Live supplies adequate for needs at weights often lighter than desired.

Undertone fully steady to firm.

Negotiated trucklot prices 2-3 lb. ready to cook broiler-fryers for delivery this next week, US Grade A none, Plant Grade 48-49.

Baltimore Eggs

Thursday, June 12

Market steady to firm. Demand is mostly improved in some quarters. Supplies on large are in good balance, mediums ample.

Cartoned Eggs: Prices to retailers, State Graded (Min. one case sale) White: Grade A Large 57-63, mostly 57-59; Grade A Medium 47-53, mostly 47-49.

Fogelsville

Sale of June 10

(Prices paid dock weights, cents per pound, except where noted.)

Heavy type hens 10-26 mostly 15-18; Pullets 39-44 mostly 38-44; Roasters 33½-45 mostly 48-40; Ducks 48-63 mostly 63; Rabbits 40-56 mostly 50-52; Guineas 1.83-1.85; Pigeons (per pr.) 1.00-4.70.

Total coops sold 192.

Poultry received Monday 7 p.m. to 10:30 p.m., Tuesday 7 a.m. to 12 Noon. Sale at 11:30 a.m.

Directions - Take Rt. 222 thruway. Exit at Fogelsville exit. North to stoplight in Fogelsville, turn left, proceed one mile.

New Holland Dairy

Wednesday, June 11

Reported receipts of 117 cows, 22 heifers and 2 bulls. Market reported stronger than last week.

Load of Pa. cows fresh - 575-1175 and springers 625-985; load of Franklin County cows 535-695 and springers 475-850.

Locally consigned cows 450-825 and springing heifers 490-610; bulls 200-320. Herd dispersal of 50 head from Delaware in all stages of production 390-995.

HIGH PRESSURE WASHING

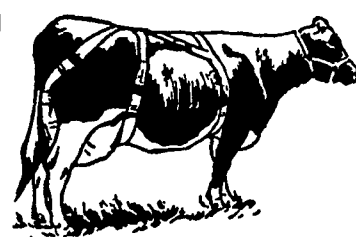
OF POULTRY HOUSES AND VEAL PENS

BARRY L. HERR

1744 Pioneer Road, Lancaster Pa
Phone 717 464-2044

CONTROL FLIES WITH A FOGMASTER AND HOFFMANS FLY SPRAY

- CORN SEED TREATMENT
- SHOVELS - HOES - RAKES
- GARDEN HOSE
- GOLDEN MALRIN FLY BAIT
- KNAPSAC SPRAYERS [ALL SIZES]



SUPPORT YOUR COWS! WITH A

TAMM UDDER SUPPORT

+ CATTLE & HOG MINERALS
+ CUSTOM CANVASS WORK

AARON S. GROFF & SON

FARM & DAIRY STORE

R.D.3, Ephrata, Pa. 17522 | Hinkletown | Phone 354-0744
Store Hours: 7 A.M. to 9 P.M.
Closed Tuesdays & Saturdays at 5:30 P.M.

GLICK'S

Distributor for

ROOFING & SPOUTING

BAKED ENAMEL TIN ROOFS

Colors: Turquoise, Tan, Red, White

ALSO BAKED ALUMINUM

Colors: Green, White, Tan, Red.

FULL SERVICE DEALER
SALES & INSTALLATION

SAMUEL B. GLICK

R.D.1, Kinzer, PA Ph. (717) 442-4921

Please call before 7 A.M.
or after 6 P.M.

Lancaster Farming

P.O. Box 266 - Lititz, PA 17543

Office: 22 E. Main St., Lititz, PA 17543
Record-Express Office Building

Phone: Lancaster 717-394-3047
or Lititz 717-626-2191

Richard E. Wanner, Editor
Melissa Piper, Associate Editor

Subscription Price: \$3 per year.

Established November 4, 1955

Published every Saturday by Lancaster Farming
Lititz, PA

Second Class Postage paid at Lititz, PA 17543

Members of Newspaper Farm Editors Assn., Pa Newspaper Publishers Association, and National Newspaper Association