

# every month can be Dairy Month when you use Atlantic Genetic Power sires.

(production summaries are USDA May/75; type data is latest from breed associations)



**15H123 Whittier Farms Apollo ROCKET — GP & PQ**  
170 Daus. in 107 Herds Ave 16.793M 3.49% 586F  
Pred Dif (90% rpt) +2.361M +\$166 +48F  
42 Cl Daus. Ave 77.6, 32 Pr -1.69 PDT



**15H120 Harrisburg GAY Ideal — EX & GM**  
374 Daus in 210 Herds Ave 15.432M 3.69% 569F  
Pred Dif (94% rpt) +1.160M +\$88 +32F  
55 Cl Daus Ave 80.6, 40 Pr +33 PDT



**15G106 Edisto Farms FAVORITE'S Bonus**  
31 Daus in 20 Herds Ave 10.847M 4.34% 471F  
Pred Dif (59% rpt) +893M +\$67 +24F  
5 Classified Daus Ave 82.3



**15H103 Penstate IVANHOE STAR — VG & GM**  
9,502 Daus in 2,251 Herds Ave 15.690M 3.75% 589F  
Pred Dif (99% rpt) +939M +\$84 +41F  
2,078 Cl Daus Ave 79.5, 1.595 Pr +16 PDT



**15H141 Sterlingdale PIONEER Admiral — EX & GM**  
150 Daus in 97 Herds Ave 16.459M 3.45% 568F  
Pred Dif (84% rpt) +1.151M +\$73 +14F  
33 Cl Daus Ave 81.6, 33 Pr +54 PDT



**15J48 B.S. Noble SUPERB — GM**  
45 Daus in 8 Herds Ave 10.664M 4.74% 505F  
Pred Dif (48% rpt) +902M +\$74 +31F  
17 Classified Daus Ave 83.4, +3/Br Ave



**15H128 WINTERthur Hector Ivanhoe Van — VG & PQ**  
146 Daus in 97 Herds Ave 14.786M 3.89% 575F  
Pred Dif (88% rpt) +940M +\$93 +53F  
20 Cl Daus Ave 77.4, 14 Pr -2.00 PDT



**15H114 Kilinsdale Ivanhoe JACK — VG & GM**  
6,846 Daus in 1,799 Herds Ave 15.282M 3.53% 540F  
Pred Dif (99% rpt) +750M +\$38 -3F  
1,542 Cl Daus Ave 79.1, 1.182 Pr 47 PDT



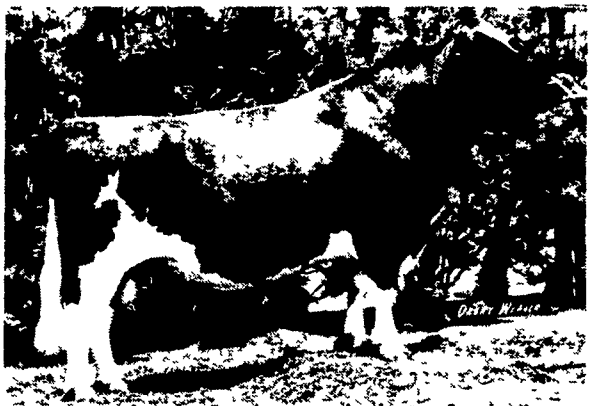
**1B62 Alphil Elaim LAIRD — EX**  
38 Daus in 8 Herds Ave 11.763M 4.19% 493F  
Pred Dif (45% rpt) +680M +\$51 +18F  
15 Classified Daus Ave 83.9 (Br Ave)



**15H171 Minnechaug Glenafton HERCULES — VG & GM**  
46 Daus in 8 Herds Ave 19.450M 3.58% 697F  
Pred Dif (49% rpt) +708M +\$48 +12F  
36 Cl Daus Ave 80.5, 36 Pr +75 PDT



**15H165 Producer's Skylark COMET — GP & PQ**  
107 Daus in 5 Herds Ave 17.866M 3.58% 640F  
Pred Dif (43% rpt) +785M +\$61 +23F  
(No official type summary to date)



**3A73 Mar-Ral COMMANDER'S Pride — VG & D.Ap.**  
419 Daus in 153 Herds Ave 12.547M 3.76% 472F  
Pred Dif (94% rpt) +1.194M +\$86 +\$27F  
87 Classified Daus Ave 85.3, -1/Br Ave

These sires, and dozens more, are now available daily through our Professional Technician Service<sup>1</sup>

We are also the distributor for Carnation/Genetics and several other AI organizations in this area.

**DIRECT HERD BREEDERS: check with us on semen availability and price before you place another order!**

# Atlantic

LIVESTOCK SERVICES BREEDERS COOPERATIVE

Member — NAL Affiliated Breeders

CLEONA\* 273 6763  
Elizabethtown 367-3923  
Hummelstown 566 2569  
COATESVILLE\* 384-2741  
Parkesburg 857 5545  
Oxford 932 9361  
Pughtown 469-9238

Call for service and information\*

LANCASTER* 569 0411	E Berks* 376 8298
Akron 859 2552	W Berks* 376 8297
East Earl 445 4131	YORK* 792 0541
Gap* 442 4471	Brograveville 927 6210
Mount Joy 653 1451	Fawn Grove 382 4805
Quarryville 786 7381	Seven Valley 428 2266
	York Springs 528 4426

\*24-hour answering service or recorder

"The milky tide is on our side"