

# classified ads

PHONE 717-394-3047 or 717-626-2191

**Farm Equipment**

**TRACTOR & MOTOR REPAIRS**

Over 20 years experience with Ford tractors and equipment.

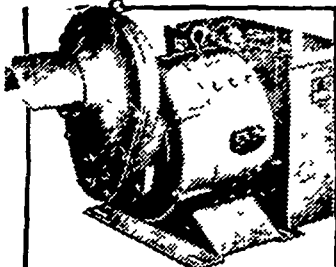
Shop & Road Service  
Pickup and Delivery

**Walt Stively, Jr.**

Springville Road  
Quarryville RD3  
Phone 717-786-2252

Used 430 Int. Baler.  
Used Fast Hitch 2-row Corn Planter.  
10 Tooth Chisel Plow  
7 H.P. Cadet Tractor w/38" mower  
Used 2-row 555 Forage Harvester  
**COPE & WEAVER CO.**  
New Providence  
786-7351

New Holland 717 Harvester  
A.C. 4-row No till Corn Planter  
3B, 3pt. hitch Massey Plow  
Allis Chalmers C Tractor w-cultivators  
**ROY H. BUCH, INC.**  
Ephrata 859-2441



**Protects Your Farm Against Power Failure**

Your profits go down when power goes off! Let us show you how you can protect your family and farm from costly annoying power outages by leasing or buying a Winpower alternator



**MARVIN J. HORST**

Dairy Equipment and Amana Appliances  
R D #1 (Iona)  
Lebanon, PA  
Phone (717) 272-0871

Located on Route 897 between Schaefferstown and Lebanon over 30 years in business at same place

## FORD TRACTORS

- 2000 Gas
- 2000 Diesel
- 3000 Diesel
- 4000 Gas
- 4000 SU Gas
- 4000 SU Diesel
- 5000 Diesel
- 5200 Diesel
- 7200 Diesel
- 3400 Diesel
- 5500 T L B

- CL 20 Loader
- C L 40 Loader
- 8 N
- N A A
- 600
- 800
- 3000
- 5000 6 X
- 5000 6 Y
- 4500 T L B

**KELLER BROS. TRACTOR CO.**

Buffalo Springs Call (717) 949-6501  
10 Miles North of Lititz

**Farm Equipment**

New Idea 705 Uni-System, Forage Harvester and Sheller attachments and four heads. 215-933-7379.

For Sale - Silos-2 Harvestores 20 x 60, live unloader; 20 x 27 sweep arm unloader; (3) 20 x 60 concrete silos with silomatic unloaders; J.D. 38 chopper, 2 heads. 609-983-0674 call after 6 p.m. or early morning.



M.F. Case  
New Idea Gehl  
Dunham Tillage Tools  
**NEW EQUIPMENT IN STOCK**

1830 Unloader  
M.F. 560 Round Baler  
M.F. 468 4-row Corn Planter  
M.F. 39 2-row Corn Planter  
(2) 10 ft. Dunham Cultimulchers  
(2) 12 ft. Dunham Cultimulchers  
Gehl 880 Mower Conditioner  
3 pt. Spimer Fert. Spreaders  
BF 130 Gehl Blender Feeder

Plows 2, 3, & 4 Bottom  
M.F. 124 Baler  
Forage Boxes, Gehl and New Idea.  
580 B. Loader Backhoes  
1737 Unloaders  
David Brown Tractors Models - 885N - 990 - 995 - 1212  
Satoh Tractor & Loaders  
Spring Harrows  
New Idea Spreaders  
Cultipackers  
N.I. Mtd. Cornpicker  
(2) Gehl Grinder Mixers  
Compact Tractors  
Case and New Idea all sizes.

**USED EQUIPMENT**  
8N Ford. real nice  
Case VAC w-cultivators  
Hesston PT7 - 7ft. windrower  
Case 1537 Unloader  
Fox Max S.P. Harvester & Hay Head  
N.I. Model 213 Single Beater Spreader  
Case 300 Industrial Tractor loader  
Mustang Mod. 1700 Skid Steer loader

**A. L. HERR & BRO.**  
Quarryville 786-3521

**MONTGOMERY EQUIPMENT**

**USED EQUIPMENT**

- \*New Holland 880 Harvester with Cornhead & Pickup
- \*Gehl PTO Forage Blower
- \*NH 461 Haybine
- \*Case 555 Haybine
- \*New & Used Elevators in Stock
- \*Grain Boxes & Wagons
- \*Case 1537 Unloader
- \*NH 1469 S P Haybine
- \*NH 269 Baler w/Thrower
- \*Harvestore roller Mill w/12 elec motor
- \*Badger Forage Box
- \*A C 780 w/ter w/2 Row & Pic. **SOLD**
- \*A C 170 Tractor only 225 hrs
- \*A C D15 w/Hyd Ldr
- \*Case 450 Bulldozer
- \*Case D630 Tractor
- \*D B 990 Dsl Tractor
- \*Farmall 1066 Hydro Tractor
- \*A C D19 Tractor w/4 B Plow
- \*A C WD45 Tractor & Loader
- \*A C 480 Blower & Pipe
- \*Massey **SOLD** Johnson Hay Baler
- \*Massey **SOLD** Ferguson Sickle Mow. **SOLD**
- \*Massey Ferguson 200 Bu Spreader
- \*NH 78 Baler & Thrower
- \*J D LA **SOLD** r & Equipment
- \*Ford 8 N
- \*Case 580 D & Loader
- \*IH 330 & Loader
- \*A C 390 Haybine (like new)
- \*Massey SP 82 Combine
- \*16 ft Cattle Truck Body
- \*J D 32 ft Field Cultivator (foldup)
- \*A C 302 Baler
- \*A C 303 Baler w/thrower
- \*Wisconsin 4 cyl power unit w/starter
- \*Wisconsin 2 cyl power unit
- \*A C 829 Haybine
- \*A C 444 Baler w/thrower (like new)

**CASE AND ALLIS CHALMERS NEW TRACTORS IN STOCK**  
\*D B 990  
\*D B 1210  
\*A C 6040 Diesel Tractor  
\*David Brown 995  
\*D B 885 G  
\*A C 185 Diesel Tractor  
\*Case 1070 w/Cab and Air  
\*Case 1370 w/Cab & Air

**NEW EQUIPMENT IN STOCK**  
\*A C Corn Planters  
\*13 ft 9" Disc  
\*12 **SOLD** Disc  
\*14 ft Cultipacker  
\*13 ft Cultipacker  
\*13 ft Cultimulcher  
\*Dion Forage Boxes  
\*Ontario 16 Disc Grain Drill

**NEW HOLLAND IN STOCK**  
\*273 Balers  
\*276 Baler  
\*850 Round Baler  
\*469 Haybines  
\*35 **SOLD** r Mill  
\*519 Spreaders  
\*676 Spreaders  
\*790 Spreaders  
\*8 Crop Carriers  
\*Pickup Attachments for Harvesters

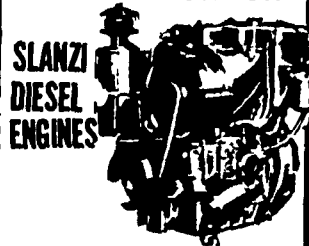
**MONTGOMERY EQUIPMENT**

Rt 273 Rising Sun, Md  
301-658-5568

Immediate Financing  
Sales SERVICE  
RENTALS  
OPEN 6 DAYS A WEEK  
OPEN EVENINGS

**Farm Equipment**

**DISTRIBUTOR FOR**



7½ to 65 HP Air Cooled. Can be mounted on various pieces of equipment. Also Good used Diesel Engines.

Call  
Horning's Warehouse  
717-354-7792

If no answer call  
717-354-4374

**DIESEL & GAS SALES & SERVICE SMUCKER'S ENGINE SHOP**

RD1, Gordonville, Pa. 17529

Also for complete refrigeration service call Titus H Horning 717-354-5768



Oliver 77 Dsl Tractor (Orch)  
Oliver 70 Gas Tractor (Steel)  
Oliver 60 Gas Tractor  
Allis Chalmers B w/cults  
Ferguson Utility w/3 pt

**USED EQUIPMENT**  
Oliver 312 2R Corn Planter  
Oliver 2R tri corn planter  
John Deere 2R corn planter  
Oliver 365 3B 16" 3 pt Plow  
Oliver 348 3B 18" 3 pt plow  
MM 5000 3B 14" 3 pt plow  
Ford 3B 12" 3 pt plow  
Ford 1B 14" 3 pt Plow  
Oliver 2B 14" tri plow  
Dunham 7 ft Cultipacker  
IH (horse) Grain Drill  
J D Wheel Disc 12 ft  
Oliver 13 7 Grain Drill  
Oliver 16 7 Grain Drill

**NEW TRACTORS**  
Oliver 1755 Diesel Tractor  
Oliver 1465 Dsl Util Tractor  
Oliver 1365 Dsl Util Tractor  
Oliver 1265 Dsl Util Tractor  
Kubota L 260 Dsl Utility  
Kubota L 175 Dsl Utility

**NEW EQUIPMENT**  
White 348 3B SAR 3 pt plow  
White 348 4B SAR 3 pt plow  
White 548 5B SAR Semi Plow  
White 252 Disc Harrow  
Pittsburgh 2B 12" 3 pt plow  
Pittsburgh 2B 14" 3 pt plow  
Pittsburgh 7 ft 7" Wheel Disc  
Pittsburgh 5 ft 5" 3 pt Disc  
Woods M5P 3 pt rotary cutter  
Woods M60P rotary cutter  
Woods 84 Tri rotary cutter  
Vicon PS 500 3 pt spreader  
Vicon PS 600 3 pt spreader

**USED LAWN EQUIPMENT**  
Bolens 1556 15 h p Hydro  
Bolens G 14 gear  
M F 12 h p Hydro  
Economy w/Atch

**FARMERSVILLE EQUIP., INC.**  
RD2, Ephrata, Pa.  
717-354-4271  
Store Hours  
Daily 7 30 6 00  
Sat 7 30 4 30

**Farm Equipment**

For Sale - Massey Harris pickup Hay Baler with Wisconsin engine. 717-386-5404.

Hay feeders on skids, 8', 12' or 16' long. Christ B. Lapp, R.D.1, Irishtown Rd., Ronks, Pa. between Ronks and Gordonville.

New Hay Tedders, ground driven and PTO Models available. Manufactured by PEQUEA MACHINE, Box 51, Gordonville, Pa. 17529

**Farm Equipment**

For Sale - Cement Block Machine with elevator and mixer makes 2 8" blocks at a time, requires air, \$1200. Bernville 215-488-1765 1-5 P.M.

**UNIDALLIA SILO SALES & SERVICE**  
Lancaster Level Flo spreaders and fill pipes installed on any type silo.

Write  
**DANIEL STOLTZFUS**  
Narvon RD2, 17555  
Phone 354-4374



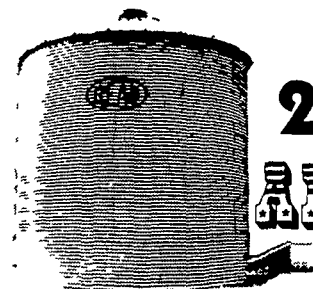
**USED EQUIPMENT**

New M.F. 760 Diesel Combine  
966 Hydro, 800 hrs. \$9,850.  
Farmall Super A w-cultivators  
(6) Uni-Tractors with equipment to choose from, Several Uni-Combines and several corn heads, nearly new.  
Int. 203 Combine with cab.  
Int. No. 650 Harvester w-recutter and 2 corn heads.

Farmall 806 Diesel  
Farmall 706 Diesel  
Farmall 656 Gas w-1570 hrs.  
Oliver 1750 Diesel  
Farmall 1066 w-250 hrs.

**RAYMOND B. LEAMAN**  
Willow Street RD1 Phone Lancaster 464-2480

Midway between Lancaster & Quarryville  
off Rt 222 | Take Brenneman Road  
at Graybill Bros Garage, Refton|



For 200 years, AMERICA'S

**Right-Hand Man.**

America's farmers and agribusinessmen have produced the crops that have kept this great country of ours going for 200 years. Read appreciates this. And offers quality grain bins and accessories to make grain handling more efficient.

Visit us for a complete line of bins, heaters, fans, stirrers, augers, and accessories from Read. The people who bring yesterday's quality to today's innovations for agribusinessmen.

**STOCKING WAREHOUSE MARTIN DISTRIBUTORS, INC.**

LEBANON, PA (717) 866-4906

MAIL TO:  
MARTIN DISTRIBUTORS INC.  
RD1, Lebanon, PA 17042

Name \_\_\_\_\_  
Address \_\_\_\_\_  
City \_\_\_\_\_ State \_\_\_\_\_ Zip \_\_\_\_\_

Serious Dealer Inquiry Invited