

Buck Tractor Pulls Open 1975 Season

The Buck Tractor Pullers opened their season last Saturday evening with an official PTPA sanctioned pull. PTPA stands for the Pennsylvania Tractor Pullers Association, a state-wide organization of tractor

pullers. Winners in each category, their addresses, and tractors are listed below:
5000-lb. Super Stock
 1 - Carl Bomgardner, Annville, Farmall M; 2 - Dale Smoker, Cochranville,

AC 180; 3 - Curtis Stoltz Lebanon, Leyland.
7000-lb. Super Stock
 1 - Marlin Brubaker, Quarryville, ACD21; 2 - Tom Savage, Damascus, Md., JD 4010; 3 - Timothy Stauffer, Ephrata, Deutz 8006.
9000-lb. Super Stock
 1 - Michael Wright, New Freedom, HI 1066; 2 - Tom Savage, Damascus, Md., JD 4010; 3 - Harry Griest, Coatesville, IH 1456.
12,000-lb. Super Stock
 1 - Michael Wright, New Freedom, IH 1066; 2 - Harry L. Griest, Coatesville, IH 1456; 3 - George Kubach, Jr., Tunkhannock, JD 6030.
5000-lb. Modified
 1 - Gary Mills, Fallston,

Md., Massey 44-396 Chev.; 2 - Eugene Spickler, Elizabethtown, Massey 44-426 Chrysler Wedge; 3 - Elwood Flowers, Manheim, Farmall M-427 Chev.
7000-lb. Modified
 1 - Glenn Darnell, Laytonsville, Md. Cockshutt 40-2427 Chev.; 2 - Lester Landis, Lititz, 55 Massey-2-440 Dodge; 3 - Harold Kennedy, Roaring Branch, Massey 55-2-429 Ford.
9000-lb. Open
 1 - Lester Houck, Kinzers, Cockshutt 40-2-440 Dodge; 2 - Glenn Darnell, Laytonsville, Md., Cockshutt 40-2-427 Chev.; 3 - Lester Landis, Lititz, 55 Massey-2-440 Dodge.

Read Lancaster Farming For Farm Women News



New Idea's NEW Uni-Combine

Bigger and better than ever

New Idea's big new No 717 Uni-Combine has big capacity to handle six 30" rows of beans with its new 15-foot grain platform, or four wide rows of corn with its big new stripper plate cornhead. That's because it has more open concave area, longer walkers, a bigger shoe area and a larger grain tank than the popular No 710. That means a full 20% more overall capacity.



Uni-System just plain makes more sense.

L. L. ECKROTH
 FARM EQUIP., INC.
 New Ringgold
 Ph 717 943 2367

A C HEISEY FARM
 EQUIP. INC.
 RD1
 Jonestown
 Ph 717 865 4526

N. H. LICKER
 & SONS INC.
 Maxatawny
 Ph 215 683 7252

STANLEY A. KLOPP INC.
 Bernville
 Ph 215 488-1500

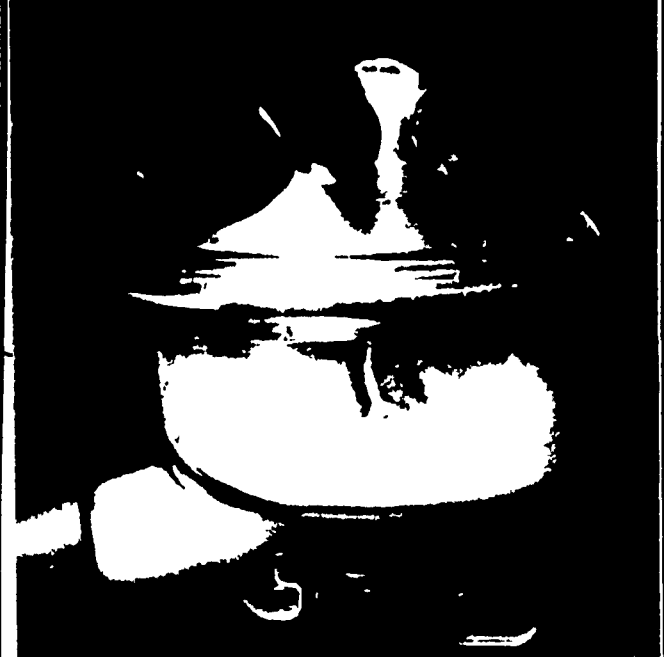
MILLER EQUIPMENT
 Bechtelsville
 Ph 215 845 2911

UMBERGERS MILL
 RD4
 Lebanon (Fontana)
 Ph 717 867-5161

STANLEY'S
 FARM SERVICE
 RD
 Klingerstown
 Ph 717-648 2088

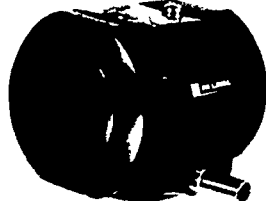
ZIMMERMAN'S
 FARM SERVICE
 Bethel
 Ph 717 933 4114

De Laval's New FLO-VU CLAW Shows You How Well it Milks



- ONE HAND OPERATION
- AUTOMATIC SHUT-OFF
- AIR VALVE METERS AIR

You can see how well it cleans, too. It's durable - self-draining design - prevents contamination



DE LAVAL STERLING VACUUM PULSATOR

Or Dependable Magnetic Electric Pulsations, which proved top performance for many years

Easy-to-Handle 55 lb. Pails

CALL AND FIND OUT WHY

SO MANY USERS HAVE CHANGED TO DELAVAL

J. B. ZIMMERMAN LANDIS BROS., INC.

& SONS

West of Blue Ball, Pa on RT 23

PH |717| 354 4955

1305 Manheim Pike

Lanc., PA

PH |717| 393 3906

Ag Department Gives Dog Damage Guides

As livestock is turned out onto Pennsylvania's lush spring pastures, Agriculture Secretary Jim McHale today cautioned farmers about the threat of roaming dogs.

"We have a Bureau of Dog Law Enforcement within the department to help ensure that dogs be confined and to reimburse farmers who have suffered livestock or poultry damage because of dogs," said McHale.

McHale said it was important for farmers to contact his department immediately if their livestock are dog victims and he asked them not to bury any carcasses.

Stephen J. Lewis, director of the Bureau of Dog Law Enforcement, reported that in the last fiscal year, the Commonwealth paid out \$48,659 to livestock owners who sustained dog damage. He estimated that about 80 percent of the indemnities went to sheep producers.

Lewis explained that these claims were paid where the owners of the dogs doing the damage were not positively identified. In cases where the owners were identified, the bureau collected and paid out to livestock owners an additional \$26,400.

Lewis estimated that over 1,000 claims a year are paid out by dog law for livestock and poultry losses. "We bend over backwards to make

certain the farmer is fully reimbursed for these losses," said Lewis. "Our agents try to determine the dog owners involved because they are the ones liable for the damage. But, failing that, the department still sees that the farmers are reimbursed."

xxx

Keep Whites White

White is synonymous with warm weather. As the season for warmer temperatures comes upon us, Mrs. Ruth Ann Wilson, Extension clothing and textile specialist at The Pennsylvania State University, reminds you that keeping whites white requires some special care. To maintain the special sparkle of white garments, be sure to wash them after each wearing when it's easier to get them bright white again.

To save money and improve milk production

Feed Dairy Special 40XX

The key to efficiency in any dairy feeding program is getting maximum performance out of homegrown grains and roughages while keeping out-of-pocket feed costs down. That's why Vigortone developed Dairy Special 40XX for use in legume hay or haylage rations.

This potent pre-mix contains abundant phosphorus to balance off the high calcium content of these roughages and provides proper levels of other major minerals, trace minerals and vitamins.

Legume programs are well balanced with Dairy Special 40XX, and the need for supplemental protein is much less. Best of all, your cows soon respond to their full bred-in potential to produce milk.

Dairy Special 50XX for the dry cow

Proper nutrition for the dry cow is just as important as for the producing cow. It's during this period that the stage is set for the level of production she will have throughout the lactation period. Vigortone's Dairy Special 50XX is properly suited to fortify high roughage rations of dry cows and keep them in excellent condition right up to freshening.

See your Vigortone dealer soon

Your Vigortone dealer has several products and programs to promote better milk production and help you save money. See him soon, or return the coupon below.

Learn why more dairymen are feeding Vigortone — especially now.

VIGORTONE PRE-MIXES

50 branch offices — 3500 dealers — 3 manufacturing plants

H. Melvin Charles
 Washington Boro PA
 717-684-5783

Harnish Bros.
 Oxford, PA
 215-932-8999

Ron Hershey
 RD2, Box 388A
 Gap, PA
 717-442-8573

Pottstown Farm & Home Center
 Franklin & Laurel Sts
 215-323-6400

Marlin J. Geesaman
 RD2 Newport, PA
 717-582-4598

James Stutzman Sons
 Kutztown RD3, PA
 215-683-7198
 also
 Schwenksville RD1, Box 80, PA
 215-287-7315

Amos L. Nissley
 Dover RD1, Dela 19901

or Write Box 266 H
 c-o Lancaster Farming Newspaper
 Lititz, PA 17543

DO YOU NEED USED PARTS

FOR FARM TRACTORS and FARM MACHINERY

CALL HARRY STOHLER AT

WENGER'S FARM MACHINERY

South Race St.

Myerstown Pa. Ph 717-866-2138