

## Pa. Auction Summary

May 9, 1975

**CATTLE 8651.** Compared with 8270 head last week, and 6638 head a year ago. Compared with last week's market, slaughter steers mostly \$1.50 to \$3 higher. Slaughter heifers \$1 to \$3 higher. Slaughter cows strong to \$1.50 higher. Slaughter bullocks steady to \$1.50 higher. Slaughter bulls mostly \$1 higher.

**STEERS:** High Choice & Prime 49.00-51.75, Choice 46.00-50.00, Good 39.00-46.50, Standard 32.75-39.50, Utility 25.00-33.00. **HEIFERS:** Choice 37.00-42.00, Good 33.00-38.00, Standard 27.50-33.00, Utility 21.50-27.50. **COWS:** Utility & High-Dressing Cutter 22.50-25.25, Cutters 21.25-23.50, Canners 19.00-22.00, Shells down to 12.00. **BULLOCKS:** Choice 33.00-37.00, Good 28.00-34.00, Standard 24.00-28.75, Utility 21.75-26.00. **BULLS:** Yield Grade No. 1 1000-2000 lbs. 26.00-30.50; yield grade No. 2 900-1600 lbs. 23.00-28.50. **FEEDER CATTLE:** Good 250-900 lbs. feeder steers 27.00-30.50, few to 35.00, Medium 250-950 lbs. 20.00-27.00; Good 300-700 lbs. feeder heifers 23.00-31.00,

Medium 250-600 lbs. 19.00-23.50; Medium 300-850 lbs. feeder bulls 20.00-26.50.

**CALVES 3846.** Compared with 3752 head last week, and 2846 head a year ago. Vealers grading Standard to Choice steady to \$2 higher, Utility \$2 to \$6 higher.

**VEALERS:** Few Prime 66.00-78.00, Choice 55.00-68.00, Good 45.00-55.00, Standard 37.00-46.00, Utility 110-130 lbs. 34.00-40.00, 90-110 lbs. 30.00-37.00, 70-85 lbs. 28.00-33.00. Farm calves, holstein bulls 90-120 lbs. 33.00-45.00; beef cross bulls & heifers 70-120 lbs. 34.00-46.00.

**HOGS 9003.** Compared with 9274 head last week, and 6724 head a year ago. Barrows & Gilts \$3 to \$3.50 higher.

**BARROWS & GILTS:** US No. 1-2 200-235 lbs. 47.00-48.00, No. 1-3 200-245 lbs. 46.00-47.00, No. 2-3 190-260 lbs. 44.50-46.00, No. 2-4 250-300 lbs. 38.75-45.00, No. 1-3 150-190 lbs. 36.50-43.75.

**SOWS:** US No. 1-3 300-575 lbs. 34.00-39.00, No. 2-3 300-600 lbs. 30.00-35.00. Boars 25.00-34.00.

**FEEDER PIGS 1315.** Compared with 1396 head last week, and 823 head a year ago. US No. 1-3 20-35 lbs. feeder pigs 20.00-34.00 per head, No. 1-3 35-50 lbs. 24.00-40.00, No. 1-3 50-80 lbs. 37.00-48.50, Utility 20-50 lbs. 14.00-34.00 per head.

**SHEEP 649.** Compared with 1711 head last week, and 640 head a year ago. Spring slaughter lambs unevenly steady. Choice 30-80 lbs. spring slaughter lambs 50.00-65.00, Good 40-115 lbs. 35.00-50.00. Slaughter ewes 8.00-19.00.

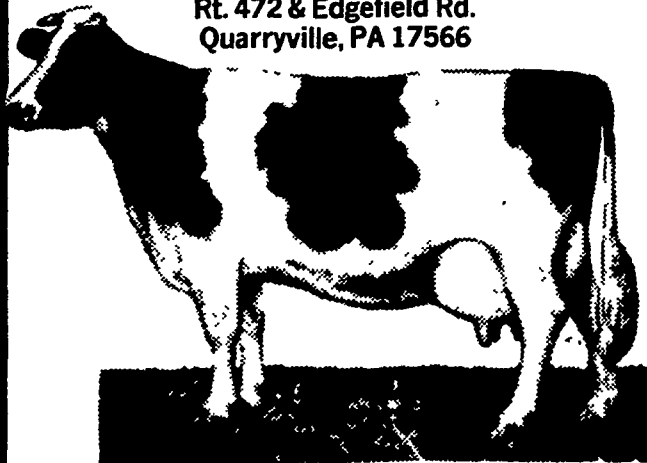
### HAY & STRAW SALE EVERY WEDNESDAY AT 12 NOON

PAUL Z. MARTIN SALES STABLES  
2 miles East of Intercourse  
Sale managed by Harvey Z. Martin

## EDGEFIELD FARMS

AMOS RUTT (717) 786-3897  
KEN RUTT (717) 786-3591

Rt. 472 & Edgefield Rd.  
Quarryville, PA 17566



- Service age sires for sale at all times.
- Sired mostly by top Atlantic sires.
- Many from cows with over 20,000 lbs. milk.
- All Animals Home Bred and From Accredited Herd.
- Rolling Herd Avg. 65 cows - 15,888 milk 620 fat
- Quality Disease-Free. Breeding Stock at Reasonable Prices.

### SPRING SPECIALS

Air-omatic Fans  
Weaverline Electric Silage Carts  
Bray Magnetic Breeding Calendars \$115.00  
75 Cow Herd  
Milk Porter Sputnick  
Electric Drive-Thru Gates \$35.00 (16' Gate)

**PARTS & SERVICE**  
All Equipment Sold & Serviced  
with Full Warranty

Check Our Prices Before You Buy.

## Leesport Livestock

May 14

**CATTLE 333.** Supply includes 113 head feeder cattle. Compared with last Wednesday's market, slaughter steers steady to strong, spots \$2 higher. Slaughter cows mostly \$2 higher. Choice slaughter steers 44.10-47.00, one at 48.35, Good 41.10-45.25, Standard 35.00-41.50, Utility 30.00-35.00. Few Good slaughter heifers 29.25-31.50, one at 34.10, few Utility & Standard 26.85-28.50. Utility & High Dressing Cutter slaughter cows 28.10-27.60, Cutters 24.00-26.10, Canners 22.50-24.85, Shells down to 20.25. Good & Choice slaughter bullocks 31.25-35.25, Standard 27.10-29.85, few Utility 23.25-27.00. Few Yield Grade No. 1 1180-2350 lbs. slaughter bulls 28.00-32.50; few yield grade No. 2 1370-1695 lbs. 27.50-30.10. Good 350-630 lbs. feeder steers 32.00-37.25, Common & Medium 350-800 lbs. 24.50-29.50; few Good 300-750 lbs. feeder heifers 26.00-30.00; Good 250-570 lbs. feeder bulls 26.50-29.50, lot 35.50.

**CALVES 138.** Vealers grading Utility & Standard \$2 to \$4 lower. Few Choice

vealers 62.00-64.00, few Good 46.50-61.50, Standard 38.00-45.00, few Utility 115-130 lbs. 35.00-40.00, 90-110 lbs. 30.00-36.00, few 70-85 lbs. 22.00-30.00. Farm calves active, holstein bulls 90-130 lbs. 36.00-46.00; beef cross bulls & heifers 65-130 lbs. 33.00-48.00.

**HOGS 272.** Barrows & Gilts mostly strong to \$1 higher. Few US No. 1-2 210-235 lbs. barrows & gilts 48.50-49.00, No. 1-3 200-240 lbs. 47.10-48.35, No. 2-3 190-245 lbs. 46.25-47.25, No. 2-4 260-310 lbs. 42.00-46.00. US No. 1-3 370-535 lbs. sows 38.00-40.75, one at 41.75, few No. 2-3 400-590 lbs. 35.75-39.00. Boars 28.00-34.00.

**FEEDER PIGS 222.** US No. 1-2 35-50 lbs. feeder pigs 26.50-40.50 per head, No. 1-3 20-35 lbs. 25.00-30.00, 35-50 lbs. 28.00-33.50, No. 1-3 50-100 lbs. 32.00-46.00, few 118-119 lbs. 44.50-47.00 cwt., Utility 20-40 lbs. 13.50-21.00 per head.

**SHEEP 36.** Good & Choice 30-75 lbs. spring slaughter lambs 49.00-62.00, few 73.00; few yearlings 80-115 lbs. 22.00-28.00. Slaughter ewes 9.50-24.00.

## Greencastle Livestock

Greencastle, Penna.

May 12, 1975

**CATTLE 186.** Compared with last Monday's market, slaughter cows \$2 to \$3 higher. One Choice slaughter steer at 45.25, few Good 37.50-42.25, Standard 30.50-36.00, couple Utility 28.50 and 29.00. Choice slaughter heifers, individual's 33.00 and 34.50. Commercial slaughter cows 24.00-26.00, Utility & High Dressing Cutter 25.10-26.75, few to 28.00, Cutters 23.10-25.35, Canners 19.85-22.75. Few Standard slaughter bullocks 27.75-29.25, few Utility 25.50-26.50. Few Yield Grade No. 1 1280-1800 lbs. slaughter bulls 27.60-30.00. Good & Choice 315-600 lbs. feeder steers 27.50-34.50, Medium 310-480 lbs. 24.25-26.50, few Common 575-710 lbs. 21.00-22.25; few Good 330-585 lbs. feeder heifers 19.50-25.00.

**CALVES 184.** Vealers grading Utility & Standard unevenly steady. Couple Prime vealers at 60.00, Choice 46.50-55.00, Good 38.00-45.00, Standard 37.00-42.00, Utility 90-120 lbs. 33.50-37.00, 70-85 lbs. 29.00-34.00.

**HOGS 41.** Few US No. 1-3 200-225 lbs. barrows & gilts 48.00-48.50, few No. 2-3 230-265 lbs. 46.75-47.75, lot No. 2-4 165 lbs. 33.75. Few US No. 1-3 315-325 lbs. sows 31.50-32.25.

**FEEDER PIGS 12.** Two lots US No. 1-3 75-95 lbs. feeder pigs 39.00-43.00 per head.

**SHEEP 6.** Not enough of any one grade to establish a market.

## Lancaster Feeder

Friday, May 9

Feeder Cattle Today 875  
Last Week 855

**TREND:** Feeder steers moderately active, generally steady.

**FEEDER STEERS:** Load Choice and Prime 950 lb. 43.75; Choice 800-985 lb. 36.00-40.00; mixed Good and Choice 450-750 lb. 30.00-36.25, 350-450 lb. 27.50-30.50; Good 350-650 lb. 25.00-30.00.

**FEEDER BULLS:** Nine head Choice 445-675 lb. 43.50-

## Chambersburg

Chambersburg, Penna.

May 8, 1975

**CATTLE 448.** Compared with last Thursday's market, slaughter steers grading Standard and Good steady to \$1.50 higher. Slaughter cows 50 cents to \$1.75 higher. Few Choice slaughter steers 46.75-49.25, Good 35.60-46.50, Standard 31.50-35.00, Utility 26.75-30.50. Few Good slaughter heifers 33.25-40.35, few Standard 28.75-30.10, Utility 24.50-26.50 Utility and High Dressing Cutter slaughter cows 24.00-26.35, couple at 26.75, Cutters 22.25-25.10, Canners 20.50-22.25, Shells down to 18.00. Individual Choice slaughter bullock at 36.00, few Good 28.50-32.50, few Standard 26.50-28.65, few Utility 24.75-27.00. Yield Grade No. 1, 1200-2000 lbs. slaughter bulls 26.50-29.60. Medium and Good 400-700 lbs. feeder steers 23.50-27.00. Medium and Good 300-600 lbs. feeder heifers 20.00-25.00.

**CALVES 361.** Vealers grading Good and Choice steady to \$1 higher, Utility \$2 to \$3.50 higher. Few Prime vealers 66.00-78.00, Choice 56.00-70.00, Good 48.00-56.00, Standard 43.00-49.00, Utility 90-110 lbs. 34.50-42.00, 70-85 lbs. 30.00-35.00. Farm Calves: Holstein bulls 90-115 lbs. 35.00-44.00.

**HOGS 117.** Barrows and gilts \$3 to \$4 higher. US No. 1-3 200-230 lbs. barrows and gilts 46.25-47.75, No. 2-3 225-250 lbs. 44.25-25.75, lot No. 2-4 265 lbs. at 44.25, lot No. 1-3 175 lbs. at 42.50.

**FEEDER PIGS 14.** Few US No. 1-3 30-40 lbs. feeder pigs 31.75-34.50 per head.

**SHEEP 24.** Few Good 50-60 lbs. spring slaughter lambs 42.00-48.00. Few Slaughter ewes 13.00-14.00.

## Peoria Cattle

May 15

Weekly Summary

Cattle  
Receipts This Week 5000  
Last Week 4000  
Year Ago 4200

Compared with last week's close, slaughter steers fully 1.00 lower. Slaughter heifers 50-2.00 lower, mostly 1.00-2.00 lower. Cows 50-1.00 higher. Bulls fully steady. Receipts 75 percent slaughter steers, 15 percent slaughter heifers balance mostly cows. Limited supply Choice and Prime slaughter steers on hand.

**SLAUGHTER STEERS:** Four loads Choice and Prime 1150-1380 lbs. yield grade 3-4 50.00-50.75, load Monday 51.00; and load and part-load 1450-1500 lbs. yield grade 4-5 47.00-50.00; Choice 950-1250 lbs. yield grade 2-4 47.50-49.50; Mixed Good and Choice 900-1300 lbs. 44.00-47.50; Good 40.00-44.00; Standard and Good Holsteins 37.00-40.00; few good 40.50.

**SLAUGHTER HEIFERS:** Choice, including few Prime 850-1075 lbs. yield grade 2-4 45.00-47.75, late 45.00-46.50, load Monday 48.75; Mixed Good and Choice 750-1100 lbs. 40.00-45.00; Good 38.00-40.00.

**COWS:** Utility and Commercial 23.00-25.00; high-dressing utility 25.50-26.50; cutter 20.00-24.00; canner 16.00-20.50.

**BULLS:** Yield grade 1-2 1100-1800 lbs. 22.00-26.00; few 1 1800-1950 lbs. 28.00-29.00, individual 32.00.



Bowlerize is derived from Thomas Bowdler, and English editor of strict morals, who attempted to improve Shakespeare by removing all "improper" reference.

## NITROGEN

(As low as 20¢/lb. act. Nit. fob plant)

### AVAILABLE:

- **ANHYDROUS AMMONIA**  
Ideal for side dressing
- **LIQUID NITROGEN**  
Apply after planting with herbicides
- **UREA**

**COMPLETE FERTILIZER**  
for Broadcast or Planter  
New - Low Prices

**PROFESSIONAL CUSTOM APPLICATION OFFERED ON ALL MATERIALS.**

Authorized Dealers:

HEISEY FARM SERVICE  
RD2, Mt. Joy, PA  
Phone 653-1568

HAROLD B. ZOOK (Liquid Nit. service)  
Lancaster, PA  
Phone 394-5412



**ORGANIC PLANT FOOD CO.**

2313 Norman Rd., Lancaster, PA Ph. 397-5152

**FRESH COWS** **EVERY WEDNESDAY IS** **SPRINGERS**

**DAIRY DAY**

**AT NEW HOLLAND SALES STABLES, INC.**  
New Holland, PA

If you need 1 cow or a truck load, we have from 100 to 200 cows to sell every week at your price. Mostly fresh and close springing Holsteins. Cows from local farmers and our regular shippers including Marvin Eshleman, Glenn Fite, Gordon Fritz, Blaine Hoffer, Dale Hostetter, H. D. Matz, and Jerry Miller.

**SALE STARTS 12:30 SHARP**  
Also Every Wednesday, Hay, Straw & Ear Corn Sale 12:00 Noon.

For arrangements for special sales or herd dispersals at our barn or on your farm, contact:  
Abram Diffenbach, Mgr.  
717-354-4341  
OR  
Norman Kolb  
717-397-5538

**HEIFERS** **STOCK BULLS**