

Conservation Program Payments Announced

Pennsylvania farmers will be eligible for \$2,390,000 in conservation aid under the terms of the 1975 Agricultural Conservation Program, details of which were released last week. Of that money, some \$308,200

will be coming into the five-county Lancaster Farming area.

Conservation practices in Lancaster County have been budgeted at \$111,400, the highest figure in the state. Berks County farmers have

been allocated \$80,800, Chester Countians will get \$43,500, Lebanon County will get \$27,200 and York County has been allocated \$84,300.

The program funds announced too late to do any good for a lot of farmers who

have already planted their crops.

Farmers must apply to their county Agricultural Stabilization and Conservation Service to be eligible for the payments. And they must apply before

any practice is started. The maximum payment for any one farm may not exceed \$2500 in the 1975 program year.

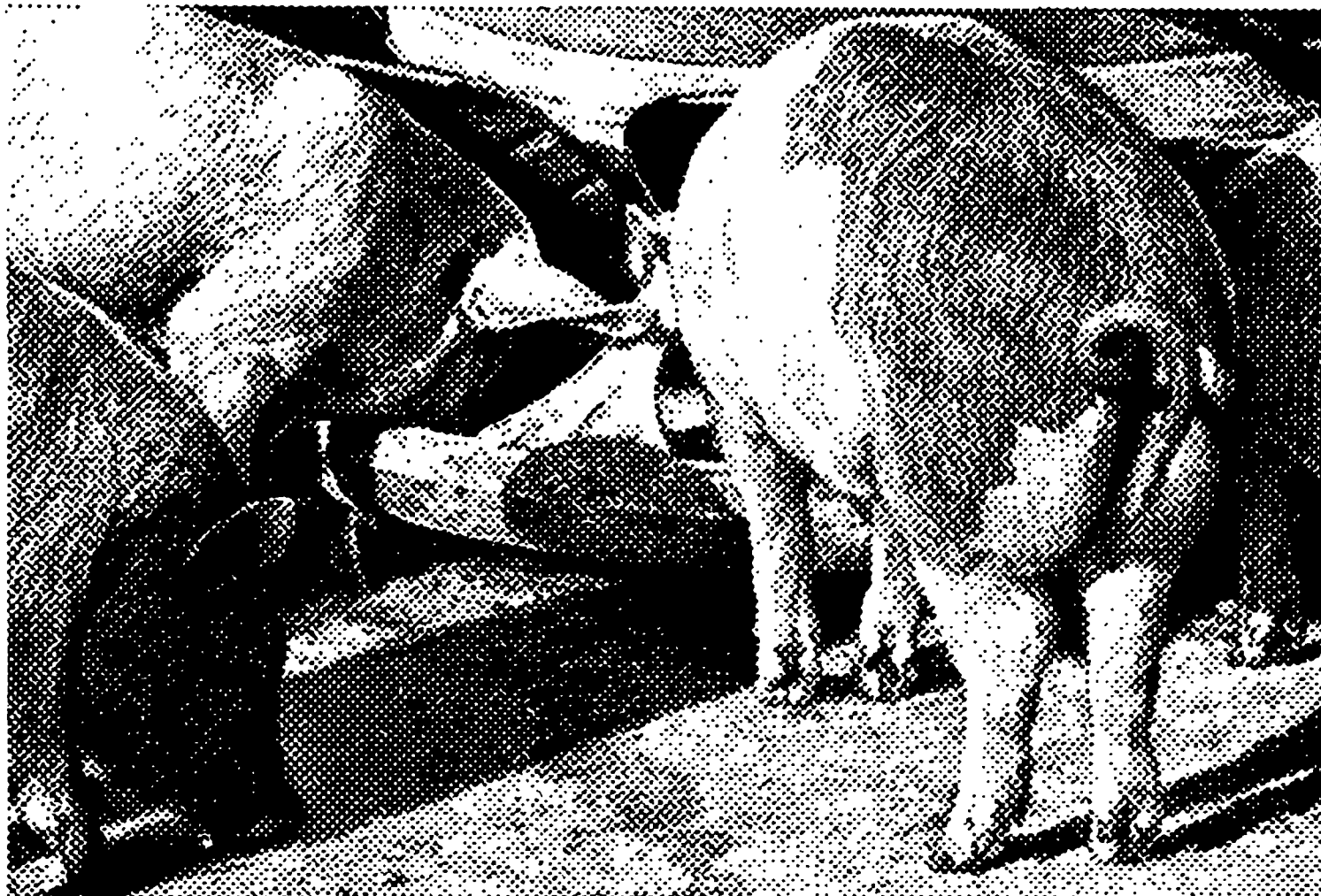
Some practices will be eligible for approximately 50-percent cost share, which

means the federal government and the landowner will each pay half the cost. Other projects will be eligible for 75-percent cost share, with the government picking up the larger share of the cost.

Practices eligible for 75-percent cost share include terraces, diversions, planting trees or improving a stand of forest trees, and sediment, chemical or water runoff control measures.

Practices which will be considered for 40 percent cost share are: establishment or improvement of permanent vegetative cover; permanent wildlife habitats; animal waste storage, treatment and diversion facilities; application of lime to legumes or grasses for soil improvement or protection; permanent open or underground drainage systems; winter cover crops.

Stripcropping will be cost shared at \$5 per acre, plus 50-percent for hedgerows. The development of springs or seeps for livestock water will be cost shared at 50-percent, but not to exceed \$250.



Here's a good idea for a great finish

Feeds with 50 grams per ton of AUREOMYCIN® require no withdrawal before slaughter. This lets you pack on the pounds and protect your hogs all the way to market.

AUREOMYCIN gives you good weight gains and feed efficiency. At the same time, it protects against losses from bacterial scours, cervical abscesses and atrophic rhinitis, and helps prevent these diseases during times of stress.

Finishing is no time to ease up. Make sure your program includes AUREOMYCIN, "THE EFFICIENCY

FACTOR." It's the perfect follow up to starter-grower programs with AUREO S.P. 250, the hog feed additive used by more producers for starting their hogs than any other additive.

For complete details contact any of the feed manufacturers listed below, or call or write The Fox Company.



GRUBB SUPPLY CO.
Elizabethtown, Pa.

EARL SAUDER, INC.
New Holland, Pa.

STEVENS FEED MILL, INC.
Stevens, Pa.

THE FOX CO.
NEWFIELD, N.J. 08344

Phone 609/692-4400

Distributors of American Cyanamid Animal Health & Feed Products

BROADWAY, VA. • SELBYVILLE, DEL. • LEWISBURG, OHIO • VESTAL, N. Y. • LITITZ, PA.

4-H Reminders

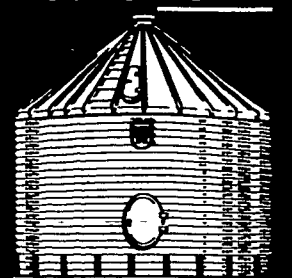
Lancaster County 4-Hers are reminded that the branding of 4-H steers will take place on Saturday morning May 24 with a rain date of May 31.

Tags will be provided by the extension service. The equipment will be furnished but manpower is needed. The branding will begin at 8:00 a.m.

Officers and Leaders of the Lancaster County 4-H are reminded that a leadership orientation meeting will be held Thursday evening May 22 at 7:30 p.m. in the Farm and Home Center. Training sessions will be held for officers. All new leaders are welcome to attend.

TRY A CLASSIFIED

Looks SOLID



is SOLID

Behlen Grain Storage Tank

Distinctive "Waffle Panel" exclusive with Behlen. Heavy gauge steel panels are double-corrugated for extra strength. "Eave Seal" locks wall panels to roof. Weather-tight. Sizes, 1,195 to 157,590 bu.

SPECIAL
25% DISCOUNT
NOW thru MAY 31st

FREY BROS.

RD#2
Quarryville, PA 17566
Phone [717] 786-2146
[717] 786-1403