

HOG PRICES

Lancaster Market

May 5, 1975
 HOGS: Barrows and gilts 2.00-3.00 higher.
 BARROWS AND GILTS:
 US 1 210-240 lb. 47.25-47.50;
 US 1-2 200-240 lb. 48.75-47.00;
 US 2-3 230-285 lb. 46.50-46.75.

Lancaster Auction

May 7, 1975
 HOGS: Barrows and gilts 50-1.00 higher.
 BARROWS AND GILTS:
 US 1-3 200-255 lb. 47.35-48.00;
 Few US 1 210-230 lb. 48.50.

Vintage Auction

May 3, 1975
 HOGS 747: Compared with last Saturday's market. Barrows & Gilts \$1.50 to \$3 higher. US No. 1-2 200-235 lbs. 45.85-46.35, No. 1-3 200-245 lbs. 45.00-45.85, No. 2-3 200-255 lbs. 44.00-44.75, few US No. 2-4 260-270 lbs. 42.85-43.75, No. 1-3 150-175 lbs. 35.00-39.75.
 SOWS: US No. 1-3 380-585 lbs. 35.00-37.25. Few Boars 30.75-31.50, few light weights 33.00-43.00.

May 7, 1975
 HOGS 700: Compared with last Wednesday's market. Barrows & Gilts \$4 to \$4.25 higher. US No. 1-2 200-240 lbs. 48.25-48.85, No. 1-3 200-250 lbs. 47.50-48.00. US No. 1-3 300-550 lbs. sows 37.00-38.85. Boars 31.00-32.00, light weights 37.00-41.50.

Try A Classified Ad It Pays!

New Holland Auction

May 5, 1975
 HOGS 1568: Compared with last Monday's market. Barrows & Gilts strong to \$3.50 higher. US No. 1-2 200-240 lbs. 47.50-48.00, No. 1-3 200-250 lbs. 46.00-47.50, No. 2-3 220-280 lbs. 45.00-46.00, No. 1-3 160-190 lbs. 44.00-46.00. US No. 1-3 300-575 lbs. sows 35.00-38.75. Boars 30.00-42.50.

St. Louis Auction

May 8, 1975
 HOGS: 5500.
 Barrows and gilts 75-1.00 lower.
 BARROWS AND GILTS:
 US 1-2 200-240 lb. 46.75-47.00, few small lots 47.25; US 1-3 200-240 lb. 46.50-46.75.

Peoria Auction

May 8, 1975
 HOGS: 3500.
 Barrows and gilts moderately active, steady to weak.
 BARROWS AND GILTS:
 US 1-2 200-240 lb. 47.00-47.50;
 US 1-3 200-250 lb. 46.50-47.00;
 US 2-3 250-260 lb. 46.00-46.50,
 260-280 lb. 45.00-46.00; US 3-4 280-300 lb. 44.00-45.00.

Indianapolis Auction

May 8, 1975
 HOGS: 1500.
 Barrows and gilts fairly active, steady to 25 lower.
 BARROWS AND GILTS:
 Few US 1-2 200-240 lb. 47.50-47.75; US 1-3 200-250 lb. 47.00-47.50.

Leb. Valley Auction

May 6, 1975
 HOGS 415. Barrows and gilts \$4 to \$4.50 higher. US No. 1-3 200-235 lbs. barrows and gilts 47.60-48.85, No. 2-3 190-245 lbs. 46.35-47.75, No. 2-4 250-290 lbs. 38.75-45.00, No. 1-3 150-180 lbs. 41.25-43.75. US No. 1-3 300-560 lbs. sows 34.25-37.25, few No. 2-3 385-635 lbs. 28.25-33.00, Utility 250-330 lbs. 24.00-31.00. Boars 28.00-29.75.
 FEEDER PIGS 28. US No. 1-3 30-35 lbs. feeder pigs 31.00-32.50 per head, lot No. 1-3 40-45 lbs. at 37.50 per head.

Lancaster Feeder

Friday, May 2
 Feeder Cattle 855
 Today 1347
 Last Week 1347
 TREND: Feeder steers 1.00 higher, instances 2.00 higher.
 FEEDER STEERS:
 Choice 750-975 lb. 35.75-38.85,
 Choice 600-750 lb. 33.25-37.50,
 small lot Choice 555 lb. 36.25;
 mixed Good and Choice 600-800 lb. 30.25-35.50; Good 400-750 lb. 23.85-28.00.

Local Grain

Thursday, May 8
 These prices are made up of the average prices quoted by a number of participating local feed and grain concerns. It should be noted, however, that not every dealer or broker handles each commodity. All prices are per bushel except ear corn which is per ton.
 The average local grain prices quoted Thursday, May 8, 1975 are as follows:

	Bid	Offered
Ear Corn	66.25	73.75
Shelled Corn	2.85	3.06
Oats		
Local	1.69	1.97
Western		2.19
Barley	2.05	2.24
Wheat		
Millers	2.96	

+Bid is the price the dealer will buy from the farmer delivered to the mill. Offered is the price the dealer will sell for at his mill.

RAY HARBOLD



ONE STEP HAULING

717-367-4036
 Elizabethtown, PA 17022

York Livestock

Thomasville, Pennsylvania
 May 7, 1975

CATTLE 114. Compared with last Wednesday's market, slaughter steers grading Standard strong to \$4 higher. Slaughter cows \$1 to \$2.50 higher. Good slaughter steers 38.85-44.00, Standard 32.75-39.50. One Choice slaughter heifer at 39.00, few Good 28.75-35.35, few Utility 20.35-24.25. Utility & High Dressing Cutter slaughter cows 22.60-23.75, Cutters 21.60-22.50, Canners 19.00-20.35. Shells down to 15.00. Choice slaughter bullocks, individual's 30.00 and 33.10, Standard, individual's 24.00 and 24.35. Yield Grade No. 1 1690 and 1890 lbs. slaughter bulls, individual's 28.00 and 29.50. Few Medium 270-950 lbs. feeder steers 25.50-30.00; few Good 530-720 lbs. feeder heifers 26.75-30.50.

Calves 72. Vealers grading Utility \$4 higher. Choice vealers 51.00-61.00, Good 45.00-51.00, Standard 35.00-47.00, Utility 90-120 lbs. 34.00-39.00, few 70-85 lbs. 30.00-34.00.

HOGS 47. US No. 1-3 195-210 lbs. barrows & gilts 44.75-46.00, few No. 2-4 270-300 lbs. 38.00. Few US No. 1-3 280-550 lbs. sows 32.00-35.00. Few Boars 27.00-33.50.

FEEDER PIGS 18. US No. 1-3 25-35 lbs. feeder pigs 32.00-33.00 per head.
 SHEEP 2. Two Slaughter ewes at 8.00.

Peoria Cattle

May 8
 Weekly Summary
 Cattle Receipts

This Week	4000
Last Week	5300
Year Ago	5000

Compared with last week's close, slaughter steers 2.00-4.00 higher. Slaughter heifers 2.50-4.00 higher. Cows 1.50-3.00 higher. Bulls fully steady. Receipts about 70 percent slaughter steers, 20 percent slaughter heifers, balance mainly cows. Best demand continued for choice to prime slaughter steers weighing over 1100 lbs. At mid-week buyers not as aggressive for numbers.

SLAUGHTER STEERS:
 Choice and Prime 1200-1300 lbs. yield grade 3-4 51.00-52.00; four loads at latter price. Choice 1000-1250 lbs. yield grade 2-4 48.00-51.00; Mixed Good and Choice 900-1300 lbs. 44.50-48.00; Good 41.00-44.50; Standard and Good Holsteins 39.00-41.00, few Good 42.00.

SLAUGHTER HEIFERS:

Futures Trading

(Closing bids as of Thursday, May 8)

	Chicago Cattle	Chicago Hogs	New York Maine Potatoes	Chicago Fresh Eggs
May				44.00
June	47.25	46.22		43.80
July		46.70		46.00
August	43.10	45.70		49.00
September				54.00
October	39.80	43.30		
November			5.22	55.70
December	38.65	42.70		56.60

Trend — Cattle are Lower, Hogs are Lower, Potatoes are Higher, and Eggs are Lower.

Markets Provided by Commodity Department
 Reynolds Securities, Inc.

Chicago Grain Futures

(Closing bids as of Thursday, May 8)

	Corn	Wheat	Soybeans	Soybean Meal
May	2.74 3/4	3.19 1/2	5.14	118.00
July	2.71 1/2	3.14 3/4	5.03	119.50
September	2.59 3/4	3.18 1/2	4.90 1/2	121.00
October				123.50
November			4.92	
December	2.44 1/2	3.27 3/4		125.50
January 1976			4.97	127.00

Trend — Corn is Mixed, Wheat is Stronger, Soybeans are Stronger, and Soybean Meal is Higher.

Markets Provided by Commodity Department
 Reynolds Securities, Inc.

U. S. Inspected Livestock Slaughter

Estimated Daily Livestock Slaughter Under Federal Inspection

	CATTLE	HOGS	SHEEP
Week to Date	508,000	1,040,000	115,000
Same Period Last Week	498,000	1,093,000	114,000
Same Period Last Year	484,000	1,313,000	130,000

Choice and Prime 900-1100 lbs. yield grade 3-4 48.50-49.50, half-load 50.00; Choice 850-1075 lbs. yield grade 2-4 46.00-48.50; Mixed Good and Choice 750-1100 lbs. 41.00-46.00; Good 38.50-41.00.

Commercial 21.50-24.00; Cutter 19.00-23.00; Canner 14.00-19.00.
 BULLS: Yield grade 1-2 1100-1800 lbs. 21.00-26.00; several yield grade 1 27.00-28.50.
 COWS: Utility and

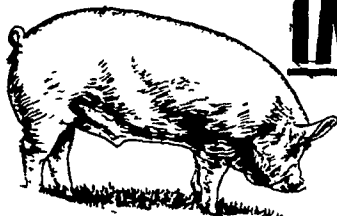
We would be happy to have you as a Customer . . .

S. K. SHOTZBERGER, INC.

LIVESTOCK TRANSPORTATION

Gene Zwally, President
 Marvin Johns, Secy-Treasurer

P.O. Box 925, Lancaster, Pa. 17604
 Phone: 393-4641 (day or night)



IMPORTANT NOTICE

LET US HANDLE YOUR FEEDER PIGS



NEXT FEEDER PIG SALE TUES., MAY 13

Feeder pigs consigned to Walter M. Dunlap and Sons must arrive at the stockyards between 7 A.M. and 11 A.M. the day of the sale. Upon arrival they will be inspected by a veterinarian, tagged, and state graded.

The two sales scheduled for May will be held on the following Tuesdays: May 13 and 27th, starting at 1 P.M. Consignors wishing to tag their pigs on the farm can get the tags at the state office at the stockyards, not later than 4 P.M. any day preceding the sale, thereby saving 25 cents per pig.

Consign all your feeder pigs to Walter M. Dunlap & Sons where they will be handled by a capable and experienced staff, and for further information call 717-397-5136.

WALTER M. DUNLAP & SONS

Capable Service To The Livestock Industry Since 1898

HEAVY PRODUCING HIGH-GRADE HOLSTEINS

MODERN FAST GAINING FEEDER CATTLE

JOSEPH BRILL

Lancaster RD6, 17603

717-394-8184