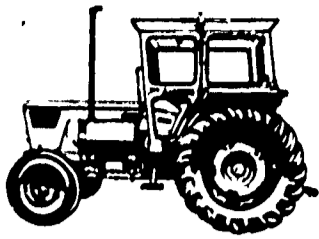


**DEUTZ** (say Doytz)  
**DOES IT**



**OFFERS YOU A BIG  
TURBO-CHARGED  
AIR-COOLED DIESEL**

**125 PTO HP STRONG**

You get all of these outstanding features as standard equipment on the 130 06 hydrostatic power steering hydraulic brakes, 16 forward and seven reverse gears, synchromesh transmission and 1000 rpm independent pto, differential lock, heavy duty swinging draw bar independent parking brake Double Diamond Safety Cab and four-wheel drive available as optional equipment Try it and you'll buy it

**SPECIAL TRADE IN PRICE  
ALLOWANCE** Now On Your  
**Used Deutz Tractor.**  
**We Need Used Deutz Tractors  
55 H.P. and Up.**

Call us for free demonstration  
of any size tractor 32 to 130 h.p.

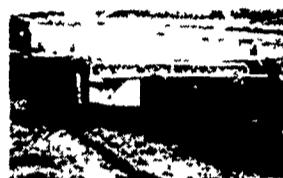


**STAUFFER  
DIESEL, Inc.**  
312 W. Main St.  
New Holland, Pa.  
Phone 717-354-4181

**What's New . . .**



A pair of compact loaders from IH offer hydrostatic drive and a number of versatile attachments. The 3200B has a lift capacity of 1600 pounds while the 3300B can hoist a 1950-pound load. The hydrostatic four-wheel drive on both models has infinitely variable 0 to 8 mph forward-reverse ground speeds. The units are available with a wide variety of 48- to 61-inch buckets and other attachments. Both have roll-over protective structures.



The TM4-330C is a new rotary mower-coditioner from KMN Modern Farm

Equipment. The new machine has a working width of 11 feet. Four rotating drums or part of hydraulically controlled cutting table. The turbo-mower is equipped with a roll conditioner and adjustable swath hoods. For more information, contact KMN, 12 Sullivan St., Westwood, N.J. 07675.



The Jari self-propelled sickle mower goes up and down hills, cuts close around trees, shrubs, buildings and under open fences. Jari will cut blue grass, weeds and brush 10 ft. tall including saplings up to 1 3/4". Equipped with a starter housing guard so chaff is not sucked into recoil starter and cooling fins.

For more information write Jari Division, P.O. Box 2075F, Mankato, MN 56001.

A new 500-gallon agricultural chemical storage tank from the Rotonics Division of Norwesco, Inc., is said to be suitable for the storage of liquid fertilizers, liquid animal feed, insecticides, grain preservatives and they can be used in irrigation systems.

The free-standing tank is portable and measures

**Thomasville  
4-H Club**

The Thomasville 4-H Community Club met recently at the 4-H Center. Jeff Roth had charge of the program, he explained to members how to fill out blue forms, these forms are used to record the achievements and growth of their work throughout their 4-H years. Slides were shown of his trip to National 4-H Congress that was awarded him last Dec.

Songs were led by Tammy and Tina Barnhart, and Brenda Wetzel with Bonnie Wire accompanist on the piano. The Sec. report was given by Jonathan Myers and accepted, the Treas. report by Bonnie Wire and accepted with a balance of \$631.49 reported. Paul Myers III gave a report on the last County Council Meeting. The mini exchange trip with Montgomery Co. Was explained by Mrs. Harris Horn. The club members will pick up trash in the Thomasville area on May 3, 1975 members will meet at the Thomasville Post Office at 9:00 a.m. pick up trucks will be needed. Coming events announced were: Rural Life Sunday Service for the club Apr. 27, at Paradise (Holtzschwamm) Luthern Church, County Rural Life Service May 4, at the 4-H Center Skating Party Apr. 28 at Delco, Blue Form deadline May 23, County Council and Leaders Meeting May 7 at the Center, next club meeting May 27 with a karate presentation by Byron Wilt, and a demonstration on physal fitness by Paul and Jonathan Myers. Thank you notes were received by the club for the donation that was given to the Dental Auxiliary Scholarship Fund, and the \$800.00 the club presented to the 4-H Center. Club rules were given to each family. Tommy Welsh gave a demonstration on Pickled Milk, Tim and Nancy Eisenhart had charge of refreshments.

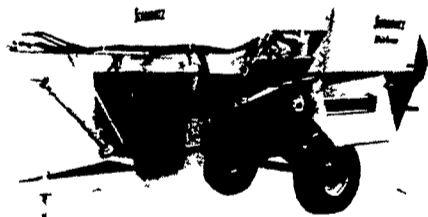


New Starbar Super Golden Malrin Fly Bait with Muscamone, a synthetic sex attractant for flies, is available in 1 and 5 lb. sealed metal cans, as well as 25 and 100 lb. drums. Usage is recommended at the rate of approximately 1/4 lb. per 500 square feet of fly feeding area.

**AGWAY**

**How to make more milk  
from  
the same amount of feed**

*The "balanced bite" is one key  
The Schwartz Mixer Wagon is the other*



Cows vary greatly in their individual preferences for one forage over another. So while some of your cows may be getting the diet they need to maintain peak production, others may be short-changing themselves . . . getting plenty of protein perhaps, but not enough energy to balance it. What can you do about it?

**The Agway Total Mixed Ration**  
TMR is the best way yet devised for feeding a ration that's perfectly balanced for nutrient content. It eliminates cows' preferences. But TMR feeding can be no better than the equipment used to mix the ration. Accurate measuring and thorough mixing are musts.

**Most versatile way to feed TMR  
...the Schwartz Mixer Wagon**  
It accurately proportions, thoroughly mixes, then transports and distributes nutrients in any prescribed amount and formulation. So it's easy to feed the right ration any place on your farm.

Triple augers tumble and turn feed end to end to perfectly blend liquid, granular or pelleted supplements into silage, chopped hay or ground grain. Five to seven minutes does the job. Controls are convenient—and positive. Solid construction assures trouble-free operation. Three sizes to choose from.

An Agway salesman will be happy to discuss TMR with you. He can also arrange a demonstration of the Schwartz Mixer Wagon. Call Agway today.

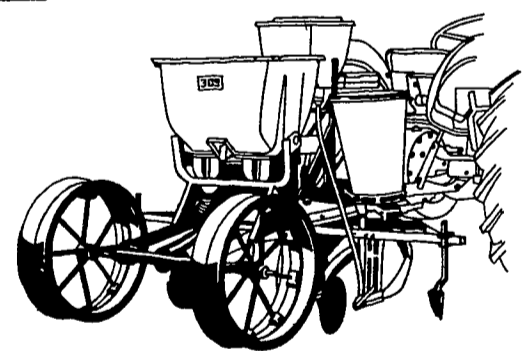
Farm Systems  
Service



**SUPPLY CENTER**

1027 DILLERVILLE ROAD LANCASTER, PA  
Phone 717-397-4761

**STORE HOURS:**  
Open Friday Evenings til 8 p.m.  
Mon. thru Thurs. 8 a.m. to 5 p.m.  
Sat. 8 a.m. to Noon



2-ROW 309 PLANTER

**309 PLANTER**

- Versatile 309 comes in 2-row units—can be toolbar mounted to make 2, 4-row planters.
- Large press wheels provide accurate drive for uniform seed spacing.
- Available in drill or hill-drop models.
- Row spacing 28 to 42 inches.
- Fertilizer attachments (optional) with large fiberglass hopper.
- Pesticide attachments for insecticides and herbicides available.

**BEFORE YOU BUY, CALL**



**ALLEN H.  
MATZ, INC.**

505 E. Main St., New Holland  
Phone: 354-2214

SERVING THE COMMUNITY  
TWENTY FIVE YEARS  
LANC. CO.'S OLDEST FORD DEALER