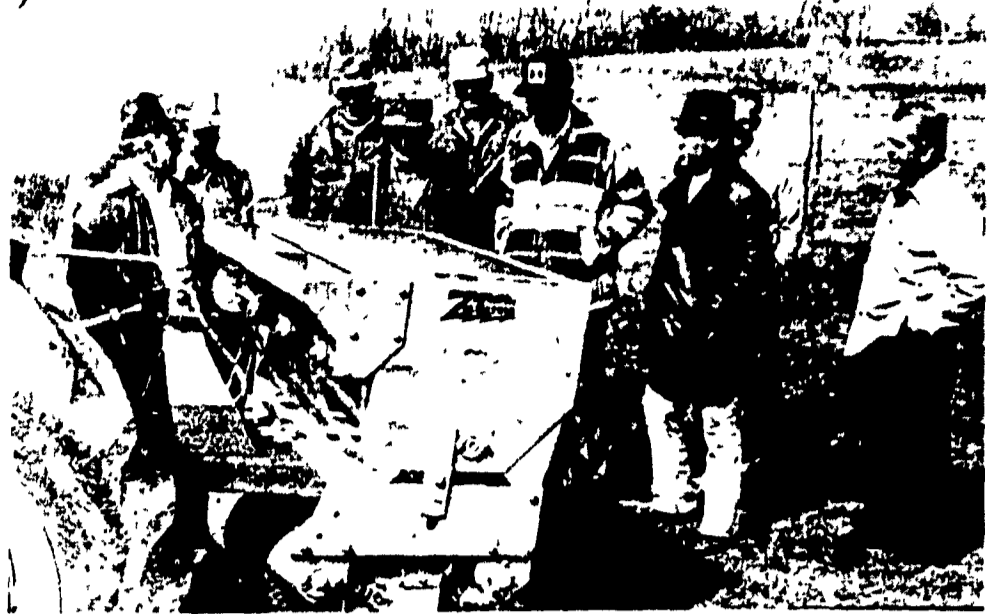


## Lebanon Farmers View Sod Demonstration

Some Lebanon County farmers got a first-hand view of a new No-tillage sod seeding technique this week at the farm of John Bomgardner, Ono R1. Attention was focused on a machine of unusual design called a "Zip Seeder". Using principles similar to no-till corn planting, the new machine drills grass and legume seeds directly into an old pasture or hay field without plowing or other tillage. Demonstration plots will be established throughout

the county this spring and summer. Grasses and legumes such as alfalfa, clovers, crown vetch and birdsfoot trefoil weeds will be controlled by applying 2-4, D herbicide two weeks before seeding. Competition from the existing species will be controlled by an application of one quart of a temporary herbicide, Paraquat.

The new machines are made available in Lebanon and surrounding counties by the Chevron Chemical Company. Savings in energy, time and soil losses are claimed for the no-till technique. John Henszey, Chevron Company representative, and Newton Bair, Associate County Agent, will work with farmers who wish to use the machine on their farm for demonstration and trial purposes.



A group of Lebanon County farm leaders are shown inspecting the "Zip seeder", a machine designed to establish new plantings of legumes

and grasses in worn-out sod fields and pastures. The demonstration was held on the farm of John Bomgardner, Ono. (photo by Newton Bair).



This 7-day-old pig's stomach is exactly this size



The little dry feed it takes to fill this tiny "fuel tank" must be

**LOADED with POWER**

It takes mighty little pig starter and sow's milk to fill the "fuel tank" of a week old pig. Yet, it must provide quick energy, fast growth and protection against disease. It must contain all vital nutrients sow's milk may lack—and in just the right balance. Most important of all, pigs must like it. No matter how great a pig starter may be, all is lost if pigs won't eat it.

Pigs love Purina starters—Baby Pig Chow, Early Weaning Chow, Pig Startena. And Purina starters offer "built-in" livability, plus grow-and-go power to bounce pigs off to a fast, thrifty start. Keeps 'em going, too. Fed Purina all the way, hogs have raced to market weight in five months (often less) and make pork for remarkably low cost.

Folks around here are finding out... Pigs start, grow, finish fast on Purina. Call us soon and order Purina Hog Chow.

**High Bros.**  
PHONE: 354-0301  
GORDONVILLE

**John B. Kurtz**  
PHONE: 354-9251  
R.D.3, EPHRATA

**Stoddard Farm & Garden, Inc.**  
PHONE 717-529-6212  
UNION, PA

**Wenger's Feed Mill Inc.**  
PHONE: 367-1195  
RHEEMS

**McCracken's Feed Mill, Inc.**  
2 NEW CHARLOTTE ST., MANHEIM  
PHONE: 717-665-2186

**Ira B. Landis**  
PHONE: 665-3248  
BOX 276, MANHEIM RD3

**John J. Hess, II, Inc.**  
PHONE: 442-4632  
PARADISE

**West Willow Farmers Assn., Inc.**  
PHONE: 464-3431  
WEST WILLOW



## Munson To Serve Area Counties As Resource Agent

John B. Munson has been appointed to The Pennsylvania State University's Cooperative Extension Service staff as an area community resource development agent, effective February 1.

Dr. Thomas B. King, associate dean for extension at Penn State, said that Mr. Munson is assisting county agricultural agents and Extension home economists in developing and conducting educational resources development programs in Adams, Cumberland, Dauphin, Franklin, Lancaster, Lebanon, Perry, and York counties.

He succeeds Dr. Donald A. Harter who recently resigned to accept an Extension administrative position in Idaho.

He is headquartered temporarily in the Lebanon County Extension Service Office, 400 South Eighth Street, Lebanon.

A native of Tacoma, Washington, Mr. Munson earned a bachelor of arts degree in political science from Yale University in 1967. He received a master of arts degree in international development studies and a master of arts degree in law and diplomacy, both from the Fletcher School of Law and Diplomacy.

Prior to being named to his present position, he was an

administrative assistant for the city of Scottsdale, Arizona; an instructor at Edmonds Community College in Seattle, Washington; a bilingual teacher in the Boston Public School System; and a Peace Corps volunteer in Panama. In college, Mr. Munson was a member of the Yale-New Haven Tutorial Program, Zeta Psi fraternity, and the varsity 150-pound crew.

He is married to the former Carol Farley, of Park Ridge, Illinois. They are expecting their first child in June.

**TRY A CLASSIFIED AD!**

PHONE 626-2191  
OR 394-3047

**FOR SALE**  
**LIGHTNING RODS**  
Most efficient Fire Protection for House, Barn or Shed  
**RAY PFLEGOR**  
R.D.4 Bloomsburg, Pa  
Ph. [717] 784-9314  
Please include your phone # when making inquiry

## FORD TRACTORS

2000 Gas	C L 40 Loader
2000 Diesel	9 N
3000 Diesel	8 N
4000 SU Gas	N A A
4000 SU Diesel	600
5000 Diesel	800
5200 Diesel	3000
7200 Diesel	5000 6 X
3400 Diesel	5000 6 Y
4000 with Loader	4500 T L B
	5500 T L B

## KELLER BROS. TRACTOR CO.

Buffalo Springs Call (717) 949-6501  
10 Miles North of Lititz

## LANCASTER SILO CO., INC.

2008 Horseshoe Road — 2436 Creek Hill Road  
LANCASTER, PA 17601

"We Manufacture and Erect our Silos"

## VIBRATED "LOCK-RIB" CORRUGATED CONCRETE STAVE SILOS

COMPLETE DAIRY AND BEEF FEEDLOT SYSTEMS  
STARLINE EQUIPMENT SALES & SERVICE  
SILO UNLOADERS  
TAPERED BOARD FEEDERS  
DOUBLE CHAIN SLAT CONVEYORS  
SINGLE CHAIN CONVEYORS  
SHUTTLE FEEDERS  
56" SILO BLOWERS  
RITCHIE CATTLE WATERERS  
LEVEL-FLO FILL PIPE & DISTRIBUTORS

CALL US IF YOU WISH TO BUY OR TRADE -- NEW OR USED FEED LOT EQUIPMENT  
717-392-9062

## LOOK, MISTER FARMER!

Sealcrete can paint your farm buildings quickly and inexpensively..... Hydraulic Aerial Equipment  
Call for Free estimate

## Seal Crete, Inc.

(MAIN OFFICE)  
RD 2, Ephrata, Pa. 717-859-1127

(WESTERN OFFICE)  
Box 365, Martinsburg, Pa. 814-793-3716