

ASA Exploring Mid East Possibilities

The American Soybean Association (ASA) board of directors voted in a meeting recently to further explore the feasibility of establishing an office in the Mideast to develop new soybean

markets. The new overseas office would be ASA's 7th. Others are in Mexico City, Brussels, Hamburg, Vienna, Tokyo and Taipei. ASA President Berwin

Tilson of Plainview, Tex., said the association recently sent a consultant to the Mideast to study the market potential for soybeans in that area.

"The consultant studied the area from all angles to make sure ASA would have a considerable chance for success there," said Tilson. "He recommended that we establish a program there for several reasons."

The major reason, Tilson said, is that petro-dollars flowing into the oil-rich Mideast countries are being spent to upgrade diets with more protein.

He noted that countries in the Mideast have rapidly expanding poultry industries.

"For example, Egypt had 25 million birds in poultry production last year and 35 million this year," Tilson said. "Officials in Iraq in-

dicated they intend to increase their poultry production by 25 times in the next five years, aiming for 100 million birds."

The consultant reported that the overall efficiency of poultry production in these countries lags far behind that in the U.S., Tilson added.

"This is an excellent opportunity for us to step in and show them how to use soybean meal to improve the efficiency of their poultry production, as has been done so successfully elsewhere," he said.

The use of soy protein for direct human consumption is another way soybeans can be used to upgrade diets in the Mideast countries, Tilson said.

"The government of Iran wants to get soy protein into the school lunch program by September," he said. "Our

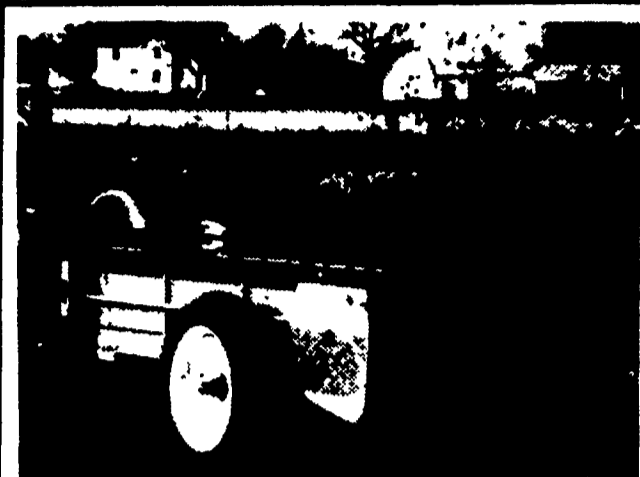
new office could help them implement this plan and then perhaps provide a home economist to help develop soy protein products for commercial sale. We have done this very successfully in Mexico."

The ASA official added that the Mideast is also a good potential market for soy oil. Egypt will buy 200,000 tons of vegetable oil this year, he said, and Lebanon has a soybean crushing capacity of 60,000 tons per year.

"Our consultant indicated

that the Mideast is having some technical problems with the soybean meal and oil they are producing," Tilson said. "Our new office would provide them with expert technical assistance to help solve these problems. This would create more demand for their products and, in turn, more demand for our beans."

**TRY A
CLASSIFIED
AD!**



3 easy ways to handle sloppy manure

New Idea spreaders offer you a choice of low-cost ways to handle sloppy manure.

Hydraulic Endgate. Fingertip control, uses standard 8" single or double acting cylinder. Hand crank available. Fits all 11 New Idea PTO spreaders.

Pan Attachment. Fits any New Idea single beater spreader. Lowest cost way to handle semi-liquid manure.

Mechanical Endgate. Fits any New Idea cylinder-paddle or flail spreader. Closes with hand crank, opens from tractor seat. Fits snug for loading and hauling.

All New Idea Spreaders are backed by the famous Warranty on Wood in addition to a Full Year Warranty.



UMBERGERS MILL
RD4
Lebanon (Fontana)
Ph 717 867 5161

ZIMMERMAN'S FARM SERVICE
Bethel
Ph 717-933 4114

A. C. HEISEY FARM EQUIP. INC.
RD1
Jonestown
Ph 717 865 4526

STANLEY A. KLOPP INC
Berville
Ph 215 488 1500

N H FLICKER & SONS INC.
Maxatawny
Ph 215 683 7252

MILLER EQUIPMENT
Bechtelsville
Ph 215 845 2911

L. L. ECKROTH FARM EQUIP., INC
New Ringgold
Ph 717 943 2367

STANLEY'S FARM SERVICE
RD
Klingerstown
Ph 717 648 2088

Tractor Club Holds Round-up

The Lancaster County 4-H Tractor Maintenance Club Round-up was held Friday evening, April 4 at the Farm & Home Center. Mr. Ben Wenger, President of the Lancaster County Machinery Dealers Association presented awards to the members for their outstanding project work.

Winners for the best two overall projects went to Wayne Erd, R1 Mount Joy and Scott Augsburg, Reinholds; the best first year projects went to Michael Bukowski, R1 Mount Joy and Sam Hollister, R2 Mount Joy; The best second year project swards went to Richard Groff, Leola and Ed Kuntzelman, Elizabethtown; and winners of the best third year projects went to Ronald Nolt R1 Mount Joy and Robert Haldemen, R1 Reinholds.

Jay W. Irwin, Associate County Agent, discussed the importance of safety when working with equipment whether it is one the highway, in the field or in the work shop. He also discussed

the Occupational Safety and Health Act (OSHA) and stressed the need for every farmer, that hires any labor, to be aware of the implications of this law. The film "The Roar of Power" was shown.

AT THE HEAD OF ITS CLASS

TODD HYBRIDS
"THE PROVEN PERFORMERS"

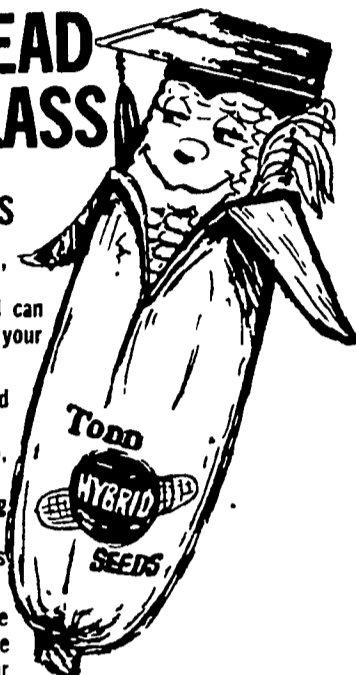
Dealers received shipments and can supply the right seeds for your particular requirements.

SEED CORN: Singles, Doubles and Threeway Crosses.
HAY CHOW 21. For Green Chop, Hay Haylage or Grazing.
SILO-CHOW 138 The leading forage variety
GRAIN HARVEST 503: Top yields of high quality grain.

Outstanding personal services are offered to see that you receive the right seed for your particular needs.

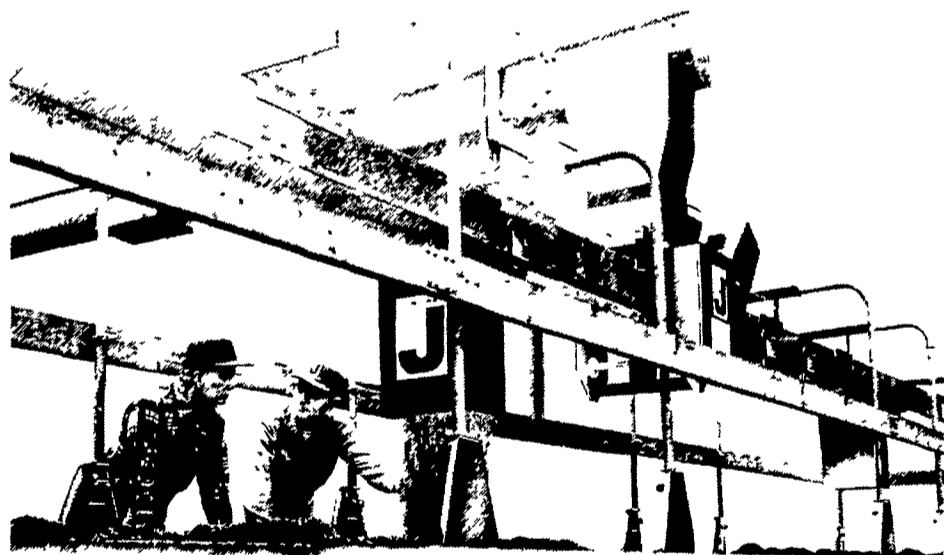
BE AT THE HEAD OF YOUR CLASS: Get your see now. See your dealer today for the proven performers.

TODD HYBRID SALES
P.O. Box 66, Abbottstown, Pa. 17301
PH: 259-9511



Look neighbor . . . you can

BELT IT OUT FAST



Feed fast and quiet — no feed separation with a Jamesway® Volume-Belt® cattle feeder.

Stop In Today for Free Catalog.

YOU CAN COUNT ON US

AGRI-EQUIP.

R D #2, Farmersville, Ephrata PA
717-354-4271

M. E. SNAVELY

455 South Cedar Street, Lititz, PA
717-626-8144

ERB & HENRY EQUIP., INC.

22-26 Henry Avenue, New Berlinville, PA
215-367-2169

HENRY S. LAPP

RD1, Cairns, Gap, PA 17527
717-442-8134

CARL L. SHIRK

5 Colebrook Road Lebanon, PA
717-274-1436

DEPENDABLE MOTOR CO.

East Main Street, Honey Brook, PA
215-273 3131

GRUMELLI FARM SERVICE

Robert Fulton Highway, Quarryville PA
717-786-7318

LANDIS BROTHERS

1305 Manheim Pike, P O Box 484,
Lancaster PA 717-393-3906

INTERNATIONAL STAR SILO ASSOC., INC.

RD#4, Myerstown Pa 717-866-5709

15% DISCOUNT DURING APRIL ON WEAVERLINE FEED CARTS FINEST FEEDER CART MADE

- Will Hold 25 Percent More Silage
- 30 Bushel Per Cart Load
- Rolling Battery Drawer Under Cart
- New Single Lever Gear Shift - 2 speeds forward, 2 speeds reverse

