

HOG PRICES

Lancaster Market

March 17
HOGS: Barrows and gilts steady to 25 higher.
BARROWS AND GILTS:
 US 1 210-240 lb. 42.00-42.50;
 US 1-3 200-250 lb. 41.00-41.60;
 US 2-3 240-270 lb. 39.00-40.75.
SOWS: US 2-3 350-600 lb. 36.50-37.50.

Vintage Auction

March 15, 1975
HOGS 1108: Compared with last Saturday's market. Barrows & Gilts steady to 25c higher. US No. 1-2 195-235 lbs. 42.00-42.25, lot 42.60, No. 1-3 200-240 lbs. 41.00-41.85, No. 2-3 225-255 lbs. 40.10-40.85, lot 180 lbs. 38.00, No. 2-4 260-310 lbs. 34.50-39.00, No. 2-4 70-155 lbs. 21.00-27.00, 160-180 lbs. 30.00-35.00. US No. 1-3 350-525 lbs. sows 36.00-37.25. Boars: 27.75-33.00.

March 19, 1975
HOGS 603: Compared with last Wednesday's market. Barrows & Gilts 25c to \$1 lower. US No. 1-2 200-240 lbs. 40.50-41.10, No. 1-3 200-250 lbs. 40.00-40.50. US No. 1-3 300-575 lbs. 35.00-37.00. Boars: 30.00-31.50.

Try A Classified Ad It Pays!

Lancaster Auction

March 19
HOGS: Barrows and gilts 25-50 lower; sows 1.00 lower.
BARROWS AND GILTS:
 US 1 210-235 lb. 41.00-41.50;
 US 1-2 200-240 lb. 40.35-40.75;
 US 2-3 220-250 lb. 40.00-40.35;
 250-275 lb. 29.50-40.00.
SOWS: US 1-3 200-400 lb. 34.50-35.50; 400-600 lb. 35.50-36.50.

New Holland Auction

March 17, 1975
HOGS 1482: Compared with last Monday's market. Barrows & Gilts mostly steady. US No. 1-2 200-235 lbs. 41.75-42.75, No. 1-3 200-250 lbs. 41.25-41.75, No. 2-3 190-260 lbs. 40.00-41.25, No. 2-4 170-190 lbs. 39.00-41.25. US No. 1-3 300-575 lbs. sows 33.00-37.50. Boars: 26.00-39.00.

Indianapolis Auction

March 20
HOGS: 1500.
 Barrows and gilts 50-1.00 higher.
BARROWS AND GILTS:
 US 1-2 200-240 lb. 40.75-41.00, 20 head 41.25; US 1-3 200-250 lb. 40.50-41.00.

Leb. Valley Auction

March 18, 1975
HOGS 351: Barrows & Gilts 25 cents to \$1 lower. US No. 1-3 195-230 lbs. barrows & gilts 40.25-40.85, No. 2-3 190-245 lbs. 39.50-40.25. US No. 1-3 300-600 lbs. sows 36.00-38.50. Boars 25.00-29.00.
FEEDER PIGS 2: Not enough of any one grade to establish a market.

Peoria Auction

March 20
HOGS: 3000. Barrows and gilts fully 50 higher; instances 1.00 higher.
BARROWS AND GILTS:
 US 1-2 200-240 lb. 40.50-41.00; about 140 head US 1 41.25-41.50; US 1-3 200-260 lb. 40.00-40.50.

St. Louis Auction

March 20
HOGS: 4500.
 Barrows and gilts 50-75 higher, closing mostly 75 higher.
BARROWS AND GILTS:
 US 1-3 200-240 lb. 40.00-40.75; closing mostly 40.50-40.75; US 2-3 250-270 lb. 39.50-40.25.

TRY A CLASSIFIED AD!

York Livestock

Thomasville, PA
 March 19, 1975
CATTLE 105: Compared with last Wednesday's market, slaughter cows steady to strong. One Choice 1065 lbs. slaughter steer at 35.10, few Good 30.25-33.10, Standard 24.00-29.00, Utility 20.75-23.85. Few Choice 870-1100 lbs. slaughter heifers 29.75-35.25, one Good at 27.85, few Standard 23.00-23.50. Utility & High Dressing Cutter slaughter cows 21.10-22.35, Cutters 19.25-20.00, few Canners 18.00-19.25. Few Standard & Good slaughter bullocks 26.75-27.25. Couple Yield Grade No. 1 1400 and 1500 lbs. slaughter bulls 28.00 and 29.25; one yield grade No. 2 1060 lbs. at 25.00. One lot Good 425 lbs. feeder steers at 28.00, few Medium 300-435 lbs. 24.00-26.50; few Medium & Good 365-525 lbs. feeder bulls 24.00-26.50.

CALVES 51: Vealers weak to \$1 lower. One Choice vealer at 52.00, few Good 40.00-46.00, Utility 90-120 lbs. 19.00-23.00, few Utility 70-85 lbs. 16.00-18.00. Farm calves, few holstein bulls 85-120 lbs. 19.00-23.00.

HOGS 33: Few US No. 1-3 200-220 lbs. barrows & gilts 38.00-39.00, few No. 2-3 190-230 lbs. 37.00-38.00, one lot No. 2-4 170 lbs. 35.00.

FEEDER PIGS 10: US No. 1-3 (1 lot) 40 lbs. feeder pigs 29.00 per head, one lot No. 1-3 75 lbs. 35.00 per head.

SHEEP 8: One lot Good 70 lbs. woolled slaughter lambs 39.50.

New Holland Dairy

Wednesday, March 19
 Reported receipts of 155 cows, 18 heifers and no bulls. The market was slightly lower than last week.

Load of Pa. cows fresh 500-920; load of Franklin County cows fresh 535-775 and springers 590-700; load of New York cows fresh springers 460-600 and load of Mass. cows springers 530-835.

Small herd dispersal in all stages of production 315-440; herd dispersal of 22 head in all stages of production 220-520; herd dispersal of 36 head in all stages of production 440-1035.

Locally consigned cows 310-650; springing heifers 385-525 and bred heifers 255-270.

Futures Trading

(Closing bids as of Thursday, March 21)

	Chicago Cattle	Chicago Hogs	New York Maine Potatoes	Chicago Fresh Eggs
April	38.60			41.75
May			2.54	41.65
June	39.25	43.65		42.75
July		45.00		
August	38.15	44.15		
September				51.25
October	37.25	42.60		
November			4.40	
December	37.40	42.75		

Trend — Cattle are Stronger, Hogs are Mixed, Potatoes are Lower, and Eggs are Stronger.

Chicago Grain Futures

(Closing bids as of Thursday, March 21)

	Corn	Wheat	Soybeans	Soybean Meal
May	2.84½	3.59	5.53	123.75
July	2.82¾	3.50¾	5.57	128.50
September	2.73	3.55	5.54	133.00
October				134.50
November			5.47½	
December	2.56¾	3.64		136.00

Trend — Corn is Mixed, Wheat is Stronger, Soybeans are Stronger, Soybean Meal is Stronger.

Markets Provided by Commodity Department Reynolds Securities, Inc.

U. S. Inspected Livestock Slaughter

Estimated Daily Livestock Slaughter Under Federal Inspection

	CATTLE	HOGS	SHEEP
Week to Date	512,000	1,059,000	123,000
Same Period Last Week	533,000	1,139,000	122,000
Same Period Last Year	465,000	1,203,000	148,000

Baltimore USDA Report

March 17, 1975
CATTLE 375: Slaughter steers & heifers 25 cents to 50 cents higher. Cows strong to instances 50 cents higher; few bulls 50 cents lower; feeder cattle steady. Supply 30 percent slaughter steers & heifers, 45 percent cows, 20 percent feeders, balance bulls.
STEERS: Load High Choice & Prime yield grade 3-4 1120 lbs. 38.25, Choice yield grade 2-4 1050-1225 lbs. 35.50-37.75, Good & Choice 34.00-35.50, Good 32.00-34.00, Standard & Low Good 1245-1370 lbs. 24.85-27.75.
HEIFERS: High Good & Choice yield grade 2-4 850-950 lbs. 32.10-33.75, several Good 27.10-29.35. **COWS:** Utility 20.50-24.00, several 24.25-24.35, Cutters 18.00-20.50, Canner & Low Cutters 15.00-18.00. **BULLS:** Yield Grade 1 1325-1540 lbs. 24.50-25.75; yield grade 2 1125-1430 lbs. 22.35-24.00.
FEEDER CATTLE: Good & Choice steers 835-975 lbs. 30.10-32.25, lot Good & Choice heifers 22.35.
HOGS 700: Barrows & Gilts strong to mostly 25 cents higher. US No. 1-3 200-240 lbs. 40.75, mostly 41.00-41.25, 40 head 41.50, No. 2-3 230-260 lbs. 40.25-41.00, No. 2-4 250-280 lbs. 39.75-40.50. **SOWS:** 50 cents to \$1.50 higher. US No. 1-3 300-600 lbs. 34.50-36.00, several lots 500-600 lbs. at 37.00.

We Have The Buyers! We Need The Pigs!

★ Only Farm fresh pigs requested and solicited

FEEDER PIG SALE

Tuesday, April 1 at 1:00 P.M.

LANCASTER STOCKYARDS

Consignors can save 25c per pig expense if tagged on the farm. Tags may be obtained at the office of J. M. Hooper, Inc. All feeder pigs must be consigned to a commission firm. Pigs State Graded. Out of state trucks must carry certificate of disinfection. Pigs accepted up to 11:00 A.M.

J. M. HOOBER INC.

EASTER LAMB SALE

THE BIG PUSH — Bring in your Easter lambs Monday, March 24 or Wed., March 26. Consign to Hooper's.

For further information call — J. M. Hooper, Inc. — Phone (717) 397-6191, 569-2084, 626-5659.

★ Over 100 potential buyers last sale

IMPORTANT NOTICE

LET US HANDLE YOUR FEEDER PIGS

NEXT FEEDER PIG SALE TUES., APRIL 1st

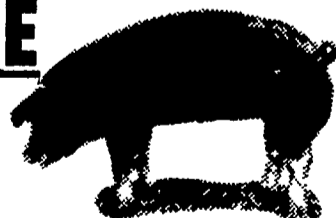
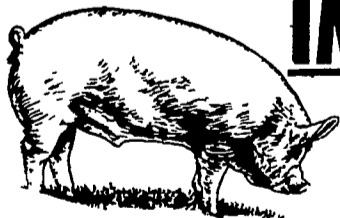
Feeder pigs consigned to Walter M. Dunlap and Sons must arrive at the stockyards between 7 A.M. and 11 A.M. the day of the sale. Upon arrival they will be inspected by a veterinarian, tagged, and state graded.

The three sales scheduled for April will be held on the Following Tuesday's - 1st, 15th & 29th, starting at 1 P.M. Consignors wishing to tag their pigs on the farm can get the tags at the state office at the stockyards, not later than 4 P.M. any day preceding the sale, thereby saving 25 cents per pig

Consign all your feeder pigs to Walter M. Dunlap & Sons where they will be handled by a capable and experienced staff, and for further information call 717-397-5136.

WALTER M. DUNLAP & SONS

Capable Service To The Livestock Industry Since 1898



We would be happy to have you as a Customer . . .

S. K. SHOTZBERGER, INC.

LIVESTOCK TRANSPORTATION

Gene Zwally, President
 Marvin Johns, Secy.-Treasurer

P.O. Box 925, Lancaster, Pa. 17604
 Phone: 393-4641 (day or night)