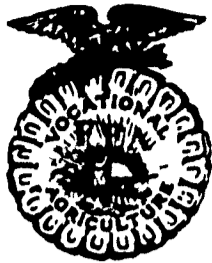


From Local Ag Teachers:



# Thoughts in Passing



Warren C. Wagner

Spring Gardens

by: Warren Wagner  
Agriculture Instructor  
Lampeter-Strasburg  
High School

With spring quickly approaching many people will be thinking about their gardens. Also with higher food costs and the state of the economy it is expected that even more people will be planting gardens this year. Because of this, people who are having gardens should

consider buying their seeds and garden supplies now to avoid the last minute rush and the possibility of being disappointed as seed supplies run out.

Another consideration that many gardeners should be thinking about is the use of manure on their gardens. Manure serves two purposes when placed on a garden or on any ground. The one that most people are aware of is that manure adds valuable soil nutrients. Cattle manure

is rated as containing 10 pounds of nitrogen, 5 pounds of phosphoric acid and 10 pounds of potash per ton. To get the maximum amount of nutrients from manure it should be applied right before plowing. If it is applied long before plowing many of the nutrients are lost through oxidation and some are washed away by spring rains and melting snow.

Another important function of manure in the soil is

organic matter also promotes the increase in the number of earth worms in the soil.

One word of caution about using manure in gardens. Manure is a lot like medicine for the soil. Just because the proper dosage improves the soils health doesn't mean that a lot more will improve it even more. It is possible to give you garden an overdose of manure, especially poultry manure which is very high in nitrogen and will burn your plants.

ESKIMOS

Eskimo is derived from an Algonquian Indian word meaning "eaters of raw meat" In fact until recently Eskimos lived almost entirely on meat and fat, much of it eaten raw

that it adds organic matter which makes the soil much looser and a better growing medium for plants. This

## Airville 4-H Club

Airville 4-H Club met recently at Lower Chancelor School. Mrs. Flaharty and Mrs. Hutchenroder presented the awards: Airville T-shirts, 4-H folders and binders were given to deserving members. Leon Crowl conducted his first meeting as our new president. Projects were signed-up - Handy-man, Photography, Tractor, Candle-making have already begun. Dave Norman showed a movie about 4-H. Next meeting will be March 19.

Sandy Sueck  
News Reporter

# GOOD YEAR FARMER DAYS '75

YOUR HEADQUARTERS  
FOR FARM, TRUCK  
AND AUTO TIRES

GOOD SELECTION  
OF TERRIFIC  
VALUES

**TOUGH  
TRUCK  
TIRES...  
GREAT TRACTION...  
LOW PRICE!**

### NYLON CORD "RIB HI-MILER"

• Built to take rough riding in style... gives you long-wearing dependable mileage.

**\$26<sup>15</sup>**

6.70x15 6-ply Tube-type blackwall plus \$2.36 Fed. Ex Tax and tire off your vehicle.

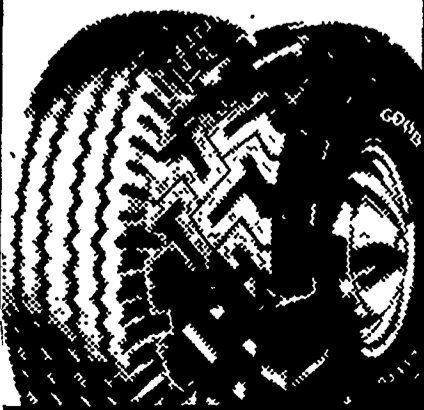
### TRACTION SURE-GRIP

• Deep-biting "Z"-shaped tread keeps you going in the roughest terrain... long-wearing tire gives dependable mileage.

**\$34<sup>05</sup>**

6.70x15 6-Ply Tube-type blackwall plus \$2.71 Fed. Ex Tax and tire off your vehicle

GREAT FOR PICKUP, PANEL, VAN AND CAMPER



## Tough Enough for Single or Dual Mounting "TRACTION TORQUE"

- Sure pulling power for tough tractor work.
- Polyester cord body - built to take rugged punishment.
- Heavy-duty rim shield of tough rubber for protection against roots, rocks and stubble.

### SMALL TRACTORS

**\$78<sup>44</sup>**

11.2x24 4-ply rating plus \$3.32 Fed Ex Tax and tire off your tractor.

### MEDIUM TRACTORS

**\$127<sup>48</sup>**

12 4x38 4-ply rating plus \$5.54 Fed Ex. Tax and tire off your tractor.

### LARGE TRACTORS

**\$185<sup>76</sup>**

15.5x38 6 ply rating plus \$7.99 Fed. Ex. Tax and tire off your tractor.

OTHER SIZES CORRESPONDINGLY LOW PRICED



#### GOODYEAR'S NATION-WIDE FIELD HAZARD ADJUSTMENT POLICY - FARM TIRES

In addition to coverage for workmanship and material related conditions as outlined in Goodyear's Manufacturer's Tire Adjustment Policy all Goodyear Super Torque, Power Torque Traction Torque Sure Torque and Special Sure Grip rear tractor tires except those branded or stamped "NA" (not adjustable) which during their original tread life become unserviceable due to field hazard damage, will be covered under this policy excluding such damage resulting from fire wreck mechanical defects under-inflation broken or kinked beads or nail punctures

At our option we will repair at no charge a tire adjustable under this policy or replace it with a new Goodyear tire of comparable grade and size computed on Goodyear's printed Predetermined Price for Adjustment current at the time of adjustment which price will fairly represent the actual retail selling price of the comparable tire at the time of adjustment as follows 25% Charge with 75% or more tread remaining and in first 24 months of tire service 50%

Charge—with 50% or more tread remaining and in first 36 months of tire service 75% Charge—with 25% or more tread remaining and in first 48 months of tire service

Applicable taxes and dealer services are additional. This policy does not in any way extend to consequential damage resulting from either workmanship or material related conditions or field hazard damage

Coverage by this policy extends only to tires in agriculture use, excluding logging industrial, and pulling contest usages

No representative or dealer has authority to make any representation promise or agreement except as stated herein

This Adjustment Policy is not to be considered a guarantee or warranty because any tire may fail in service or otherwise become unserviceable due to conditions beyond the control of the manufacturer such as mechanical condition of the vehicle improper tire maintenance field conditions etc

## HIGH FLOTATION FARM TIRES...

### FOR WAGONS AND IMPLEMENTS

• Made wide to float over wet fields... to distribute loads over a wide area.

• Made to operate effectively with minimum ground compaction with a special flotation design

**\$22<sup>32</sup>**

7.50x14  
4-ply rating plus  
88¢ Fed. Ex. Tax

**\$32<sup>97</sup>**

9.5Lx14  
6-ply rating plus  
\$1.30 Fed. Ex. Tax

NO TRADE NEEDED!  
OTHER SIZES  
CORRESPONDINGLY LOW PRICED!



**AKRON**

ROY H. BUCH, INC.  
Phone 859 2441

**BUCK**

WENGER IMPLEMENT CO.  
Phone 284-4141

**ELM**

SHOTZBERGER'S  
FARM MACHINERY  
Phone 665-2141

**FARMERSVILLE**

FARMERSVILLE EQUIP.  
Phone 354-9221

**INTERCOURSE**

C. B. HOOBER & SON  
Phone 768-8231

**KINZER**

LANCASTER EQUIPMENT  
CENTER, INC.  
Phone 442-4186

**LANCASTER**

L. H. BRUBAKER, INC.  
Phone 397 5179

**LEOLA**

M. M. WEAVER & SON  
Phone 656-7702

**LITITZ**

ROY BRUBAKER  
Phone 626-7766

GARMAN'S GARAGE  
Phone 626-5706

**MANHEIM**

SWEIGART TIRE SERVICE  
Phone 665 2258

**N. C. HERSHEY**

& SON, INC.  
Phone 665-2271

**MARTINDALE**

JARED STAUFFER CO.  
Phone 445 6465

**MECHANICS GROVE**

GRUMELLI FARM SERVICE  
Phone 786 3630

**MOUNT JOY**

J. B. HOSTETTER  
& SONS, INC.  
Phone 653-1841

**MOUNTVILLE**

R. S. HOLLINGER & SON  
Phone 285-4538

**NEW HOLLAND**

A.B.C. GROFF  
Phone 354 4191

ALLEN MATZ, INC  
Phone 354-2214

STAUFFER DIESEL  
Phone 354 4181

**QUARRYVILLE**

C. E. WILEY & SON  
Phone 786-2895

**WAKEFIELD**

C. E. WILEY & SON  
Phone 548-2110

Philip Lebzelter's & Son - Goodyear Tires at Competitive Prices at the Following Dealers: