

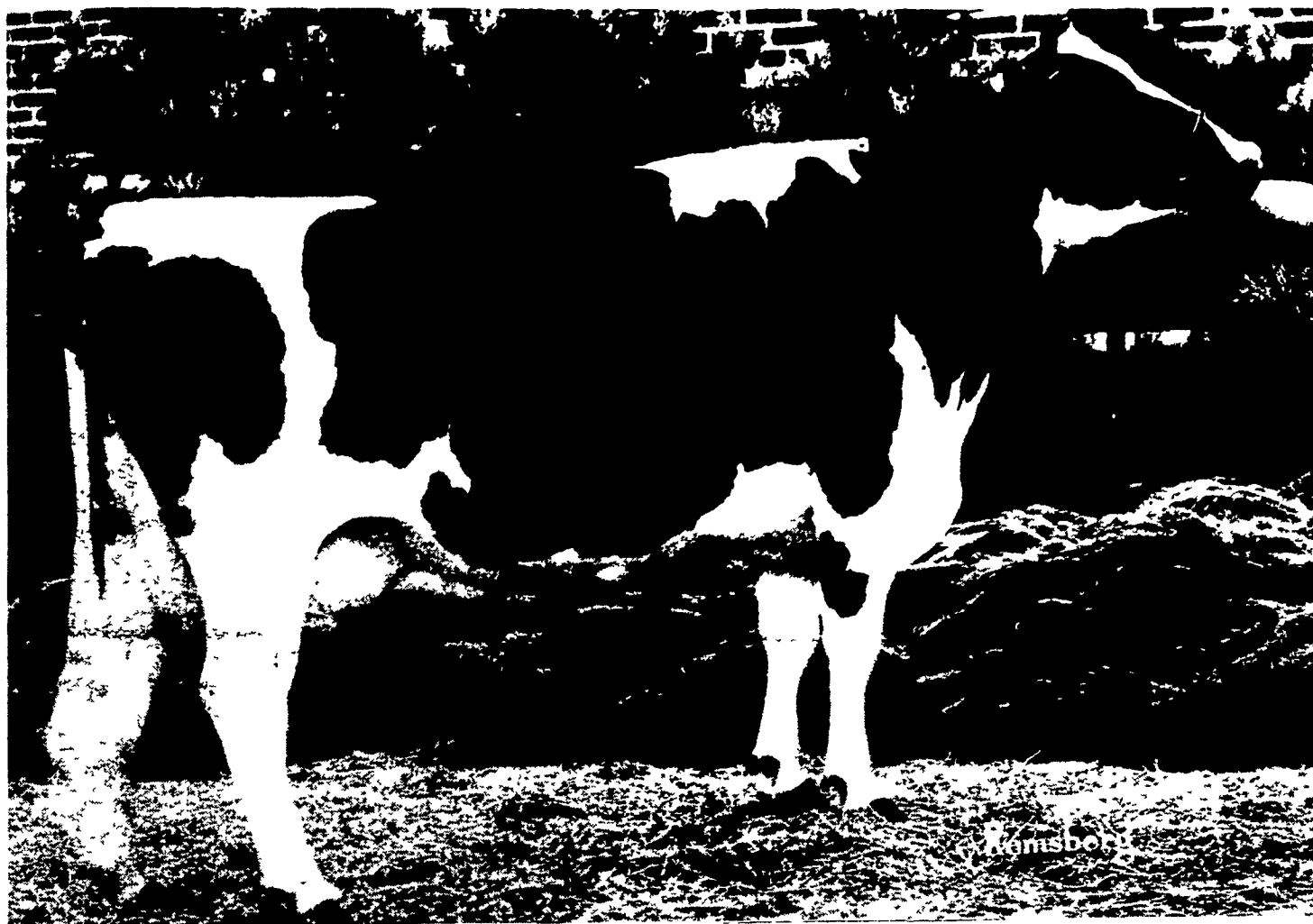
TOP BUTTERFAT HERD IN CHESTER CO. FEEDS BROWN'S . . .

CONGRATULATIONS . . .

JEFFERSON D. YODER, Elverson RD1, for winning the Chester County DHIA High Herd Butterfat Award for 1974.

53 COWS 688 LBS. FAT 17,386 LBS. MILK

ONE OF MANY GREAT COWS MILKING AT ROCKY-SIDE FARM

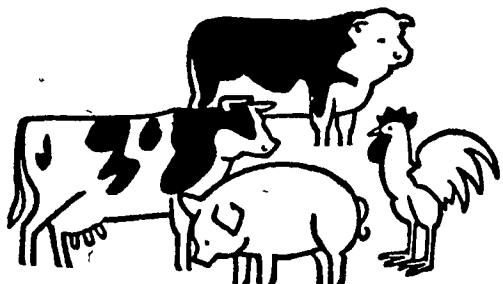


**ROCKY-SIDE PERFORMER FLASHY (2E-91)
7-07 2X 305 21,530 4.5% 963
365 23,952 4.5% 1080**

A Son of ROCKY-SIDE PERFORMER FLASHY, **ROCKY-SIDE ELEVATION ROCK (6-30-74)**, is consigned to sell at Pennsylvania State Cow and Bred Heifer Sale at Farm Show Building on April 18, 1975. His sire is ROUND OAK RAG APPLE ELEVATION.

FEEDING PROGRAM:

Mr. Yoder feeds his milking cows 30 to 35 pounds of corn silage, all the hay they can eat (alfalfa hay in the morning and mixed hay in the evening) and **BROWN'S 16 ROYAL** on a 3 to 1 basis. Dry cows are fed all the mixed hay they can eat plus 8-pounds of grain. No Corn Silage is fed to the dry cows.



F. M. BROWN'S SONS, Inc.

BIRDSBORO — FLEETWOOD — SINKING SPRING
582-2741 944-7654 678-4567

(Area Code 215)