

classified ads

PHONE 394-3047 or 626-2191

<p>Farm Equipment</p> <p>MASONRY GENERAL CONSTRUCTION SPECIALTY..... FIREPLACES</p> <p>Contact: CARL B. MILLER 604 Main Street Akron, PA Phone 859-2129 after 5 P.M. 25 YEARS EXPERIENCE</p>	<p>Farm Equipment</p> <p>GENERATORS PTO, Engine Driven, Gasoline, LP Gas, and Diesel</p> <p>Leonard Martin Co. 330 Fonderwhite Road Lebanon, Pa. 17042</p> <p>WINCO DISTRIBUTORS Ph: 717-273-6478</p>	<p>Farm Equipment</p> <p>For Sale - N. H. 275 Baler, like new, used 2 years; New Idea roller bar rake; Leroy 50 H.P. engine w-reduction gear; Jamesway and Louden litter carrier; Antique milk cans; 16" Papec and No. 7 IHC silo fillers; Oliver 1 & 2 bottom 14" pull type plows; Oliver 2 bottom 12" pull type; J.D. 999 corn planter w-fert. attach; 2 cyl. Wisconsin engine w-starter; 2 row horse cultivator; PTO and ground drive IHC corn binders; IHC No. 95, 6 & 7 ft. mowers. Phone Tom Wheary 717-687-6553</p>	<p>Farm Equipment</p> <p>SERVICES & REPAIRS For Allis Chalmers, New Holland, Starline, VanDale and other farm equipment.</p> <p>USED FARM EQUIPMENT N.H. 68 & 276 Balers (1) 30 ft. N.H. Elevator N.H. 516 S and 675 Spreaders Case 140 Spreader Starline and Hawk Tank Spreaders 10 ft. and 12 ft. Cultimulchers 9 ft. Cultipacker Woods Rotary Cutter G.E. Generator w-PTO on trailer.</p> <p>Tractors J.D. "A" A.C. C, WD, B-with loader</p> <p>ROYA BRUBAKER SALES • SERVICE 700 Woodcrest Ave. RD3, Lititz, Pa. Phone: 626-7766</p>	<p>Farm Equipment</p> <p>NOTICE Free Insulated Badger Jacket with Purchase of the Items listed (\$20.00) val. Used Kesco Milk Mover with automatic washer New Badger Forage Wagon (8 ton) with roof at dealer cost. New Little Giant elevator (28 ft.) Used 10 ft. Badger Manure pump (4 yrs.) Hydraulic driven Tailgate auger for truck or wagon (new) Several used DeLaval and Surge Vacuum Pumps. Real Cheap. We would like to demonstrate a new DeLaval Manure Pump on your farm, to show how well they work. Agents for Badger Equipment, DeLaval Dairy Equipment and Madison Silos.</p>	<p>Farm Equipment</p> <p>For Sale Attachments For N.I. Uni-Systems No. 767 Super Chopper No. 762 2 R Chopper Head No. 735 3 R Picker Head No. 730 4 R Picker Head Grass Pickup Head</p> <p>Also 2 Dion Forage Wagons 1 Kasten Forage Wagon 1 N.I. Blower 1 Case Blower All Above Used 2 Seasons, Like New Condition. Phone 215-593-5407 after 6:00 P.M.</p>
---	---	---	--	---	--

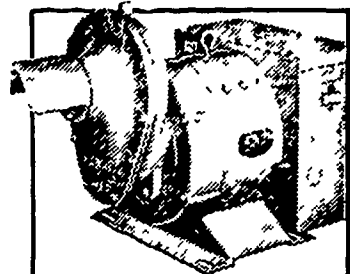
1974 - SPORTSMAN 8 pass. (Like New)
1973 - CLUB CAB Pickup w/Cap
1970 - A-100 6 Cylinder Van

PETTICOFFER DODGE, INC.
Route 230 East, Next to Shopping Center
Elizabethtown, Pa.

ANNUAL PUBLIC SALE OF FARM MACHINERY MONDAY: MARCH 17 at 10:00 A.M.

Tractors, Combines, Hay Forage Equipment, Plows and Tillage Equipment, plus misc. Farm Equipment. See Full Listing Page 73.

Try A Classified Ad!



Protects Your Farm Against Power Failure

Your profits go down when power goes off! Let us show you how you can protect your family and farm from costly, annoying power outages by leasing or buying a Winpower alternator.



"The old reliable"

DISTRIBUTOR MARVIN J. HORST

Dairy Equipment and Amana Appliances R.D.#1 (Iona) Lebanon, PA

Phone (717) 272-0871

Located on Route 897 between Schaefferstown and Lebanon, over 30 years in business at same place

CECIL DAIRY SUPPLY
Located South of the Pa. line on #272 at Zion, MD.
Phone 301-658-6923

For Sale - 300 gal. Mojonier bulk tank good condition. Wanted - 2-row 249 Int. corn planter with mechanical lift; Welder with mounted motor. David K. King, Lititz RD3, 17543

Wanted - 1 hole corn sheller, also small forge, good condition. Bernaed Merwarth, Phone 215-252-6665

For Sale - 1948 Dodge Cattle truck, 42,000 original miles \$500. 717-872-5718

SPERRY NEW HOLLAND STRONG-BOXES

MODEL 790 SPREADER
The Biggest Strong-Box Spreads 8.25 Tons In Less Than 2 Minutes.

Take a big step up in spreaders to the giant Sperry New Holland Model 790. It's a giant for capacity (358 bu. per trip). It's a giant for strength with reinforced sides and frame. It's a giant in value, promising years of dependable service.

ASK US ABOUT BONDED PROTECTION!

We can supply you with a great combination to complete your Manure Handling needs.

NEW HOLLAND SPREADER — MIGHTY MAC LOADER
USED EQUIPMENT

Simplicity

LAWN & GARDEN EQUIPMENT

CLEARANCE ON NEW '74 MODELS

SAVE \$324.00
(2) Available - 13 & 16 H.P.

ALL HAY TOOLS AVAILABLE

CONTACT: BOB GANTZ — HOME 653-5020 OFFICE — 397-5179 OR 687-6002

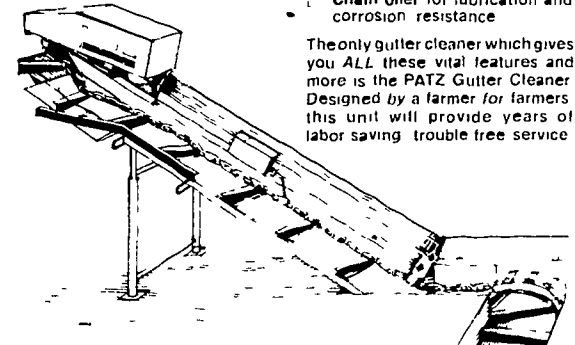
STARLINE SALES AND SERVICE — PARTS AND EQUIPMENT

L. H. BRUBAKER, Inc.
350 Strasburg Pike Ph. 397-5179 Lancaster, Pa.

CHECKLIST for buying a gutter cleaner

If you're now looking for a gutter cleaner, be sure it has all these important features:

- One piece chain link with hook and eye for heavy duty 4 way flexibility
- Angled flites for added efficiency
- Wear shoe on each flite a full half inch thick for longer flite life
- Flites welded to links — fewer parts to corrode
- Easy link removal in 10 seconds — without tools
- Removable corner wheel assembles to eliminate cement break out
- Flanged corner wheel to guide chain and protect gutter floor
- 4 Tooth drive sprocket reduces strain on reducer
- Sprocket and roller chain reducer for complete dependability
- Flite cleaner engineered to serve right and last long
- Automatic chain tightener works with full or part load
- Continuous duty motor eliminates motor overheating
- Telescoping slide legs for easy slide adjustment
- Chilled cast hold down shoe for longer shoe life
- Chain oiler for lubrication and corrosion resistance



The only gutter cleaner which gives you ALL these vital features and more is the PATZ Gutter Cleaner. Designed by a farmer for farmers this unit will provide years of labor saving trouble free service.

PATZ
MATERIAL HANDLING EQUIPMENT

LANDIS & EBSHSHADE

Kirkwood, PA Box 5 Phone 786-4158