

Public Sales Register

[Continued from Page 72] 83 at Shrewsbury Exit, in miles South of Shrewsbury, Shrewsbury Twp., York, Pa. on Route 45 turn off of I- Charles W. Shrodes and

PUBLIC AUCTION

KOLAKOWSKI'S DAIRY DISPERSAL SALE at Rudnick's Dairy Barn, Galena, Md.

SATURDAY, MARCH 1, 1975

at 12:00 noon

90 HOLSTEIN REGISTERED & GRADE COWS 90

This herd consists of 44 Registered and 46 Grades... mostly artificially bred... many to "ELEVATION" and a son of Bootmaker, Arlinda Fond Matt, Etc. (Sire-Power, Curtis, ABS)...

Featuring daughters (mature and milking) of: Paclamar Astronaut, Penstate Ivanhoe Star, Seiling Rockman, Fernhame Ivanhoe Emperor, Osborndale Ivanhoe, Emperor Duke Archie, Ryancrest Golden Meward, Skokie Glamour Boy, Whirlhill Kingpin, Roamdale Dividend Performer, Hilltop Apollo Ivanhoe, and others...

Some of these cows originate from outstanding dispersal sales and state sales, usually the top selling cows... TB and Bangs accredited, retested and Pregnancy examined.

THOMAS KOLAKOWSKI,
Owner

of Clayton, Del. (Sale at Galena, Md.)

HARRY RUDNICK & SONS, Inc.
Sales Managers & Auctioneers

Lunch

David W. Shrodes, Auctioneers.

MON. MARCH 24 - Public Sale of Farm Equipment, Tools, Truck, Poultry Equipment, Dairy Equipment, Household, Antiques located 3 miles north of York Springs, Pa., on New Route 15, turn west at Worley's Nursery about 2 miles to Bushey School Road, go east ½ mile to Sale. Sale signs posted. Terms by Paul S. Brough, owner, R1, York Springs, Pa. Clair R. Slaybaugh, Auctioneer.

WED. MARCH 26 - 9 a.m. Paul Z. Martin's Annual Farm Equipment Sale for 1975 to be held at Sales barn located 2 miles East of Intercourse, at intersection of Route 340 and New Holland Road, 4 miles South of New Holland. Sale by Paul Z. Martin, Blue Ball, Pa.; Martin Auctioneers and Associates.

THURS. MAR. 27 - 11:30 A.M. Public Sale of Farm Equipment located along Homeville - Cream Road, take Union School Road from intersections No. 10 and No. 1. Travel 4½ miles, or ½ mile east of Hogg Cabinet Shop, watch for arrows. 6 miles North of Oxford, Chester Co., Pa. Sale by Warren M. and Mildred I. Smith; Carl Diller and J. Everett Kreider, Auctioneers.

FRI. MARCH 28 - 12 Noon Pennsylvania's 2nd Performance Tested Bull Sale at Meat Animal Evaluation Center, Pennsylvania State University, University Park, Pa. Sale sponsored by The Pennsylvania Department of Agriculture, and The Pennsylvania State University in cooperation with the Pennsylvania Cattlemen's Association and the State Breed Associations. Morris Fannon, Pennington Gap, Va., Auctioneer.

SAT. MARCH 29 - 12:00 P.M. Public Sale of Valuable Farm Equipment located at Route 2, Hummelstown, Penna., East Hanover Township. Turn north at the square in Hershey off Route 422 and proceed North 3 miles to Level Drive and turn right to first farm. Level Drive is off Sand Beach Road. Turn south off Route 22 at Fawbers Restaurant onto Sandbeach Road and proceed to Level Drive. Conditions by Edgar and Fannie Wagner; Harry H. Bachman, Auctioneer.

SAT. MARCH 29 - 11:30 A.M. Public Sale of Valuable Farm Machinery located at RD9, York, Penna. In Windsor Twp. at Holtz on Millers Mill Road. Sale by Kenneth Seiple; Jacob A. Gilbert, Auctioneer.

SAT. MARCH 29 - 12 Noon Public Sale of Farm Equipment and Dairy Equipment located 8 miles South East of Reading, 5 miles Southwest of Fleetwood, 2 miles west of Rt. 662, 10 miles Northwest of Boyertown opposite Eastern Lime Quarry, along Mine Lane Road, Berks County, Pa. Sale by Paul R. Renninger; Abe Diffenbach and Abe Diffenbach, Jr., Auctioneers.

SAT. MARCH 29 - 11:30 A.M. Public Auction of 180 Acre Farm, Farm Equipment and Tools located in Halifax Township, Dauphin County, Penna., 3 miles Northeast of Halifax, 5 miles Southeast of Millersburg, turn East off Route 147 at Tourist Park, one mile North of Halifax; Watch for Sale sign along the Tourist Park to Fisherville Road. Sale by Robert J. Portzline and Lee C. Rummel, Owners; George N. Deiber, and Ernest Enders, Auctioneers.

SAT. MARCH 29 - Public Sale of Real Estate, Household Goods and Antiques located at the corner of Earl Street, New Holland,

Pa. Sale by Elizabeth S. Kling; Carl Diller, Auctioneer.

SAT. MARCH 29 - 10 A.M. Public Sale of Real Estate, Household Goods and Antiques located at 177 Church Ave., Ephrata, Pa. Terms by Mrs. Ella Wentling; Bill Wentling, Auctioneers.

SAT. MARCH 29 - 10 A.M. Public Sale of Farm Machinery, Household Goods, Antiques located approx. 15 miles South of Lancaster off 272 East along Rawlingsville Ave. or off 222 at New Providence, West between New Providence and Truce or 1 mile North of Buck off 272. Sale by John H. Rush and Frances M. Rush; Lloyd H. Kreider, Auctioneer.

SAT. MARCH 29 - Public Sale of Farm Equipment and Some Household Goods located between Manheim and Mt. Joy, off the Mt. Joy Road onto Erlsman's Road, or Fairview Road; 1½ miles west of Sporting Hill. Sale by Harvey W. Nissley; Rufus Geib and Raymond Miller, Auctioneers.

TUES. APRIL 1 - 10 A.M. Annual Commission Sale of Farm Equipment and Antiques to be held at the J. Everett Kreider Farm, The Buck, RD1, Quarryville, Penna. Call 717-284-4517 to consign articles.

FRI. APRIL 4 - Pa. Chester White Invitational Show and Sale to be held at the

(Continued from Page 74)

PUBLIC SALE

FARM EQUIPMENT, TRUCKS, 1923 FORDSON TRACTOR

SATURDAY, MARCH 8, 1975

AT 11 A.M.

Located 5 miles East of Kutztown. Turn off Rt. 222 at Wagner's Motel in Maxatawny, take 1st blacktop left Berks Co., PA.

TRACTORS: Farmall 656 diesel, 3 pt.; Super MD diesel w-front end loader & wide front attach.; M.F. 65 diesel; J.D. 520, 3 pt.; 1923 Fordson tractor w-mtd. circ. saw in excellent running condition.

EQUIPMENT: Int. 4 btm. 16" trip plow, semi-mtd.; M.F. 3 pt. 3 btm., 16" trip plow; Case 3 btm., 14" trailer plow; Dearborn 3 pt. 2 btm. 14" plow, like new; 3 plow packers; 3 disc harrows; Hugo roller harrow; 2 double roll cultipackers; 2 land rollers; M.F. 3 pt. harrow; 12' spike tooth harrow; J.D. 17 double disc grain drill; Fox F546 harvester w-1 row corn & pickup heads; J.D. 45 combine w-10' reel, pwr. str., No. 210 corn head; M.F. self-propelled corn husker; N.I. No. 7 1 row corn husker; J.D. 227 2 row mtd. corn husker; M.F. 3 pt. 2 row corn planter; 3 pt. rotary hoe; J.D. 4 row cultivator; N.I. 4 row stalk shredder; N.H. corn sheller; Int. 1300 3 pt. 7' grass mower; MC 7' fast hitch mower; N.I. hay crimper; J.D. 858 side rake; N.H. Super 77 pto baler; King Wyse 32' elev.; (3) 4 whl trailers; Iron Age 2 row potato planter; Int. 2 row potato digger; John Bean 1 row potato harvester; 2 Olson roto-beaters; Bean grader w-auto. scale; Boggs grader; Brownie bagger; 50 new bushel crates; 3 pt. 14' weeder; 200 new ½ bu. baskets; 2 lime spreaders; 10' x 12' brooder house; range shelter; Danuser post hole digger; 3 pt. scoop; 3 pt. platform; (2) 2 way hyd. cylinders; stationary hyd. hoist; Century port. heater; mtd. barrel type sprayer; 3 Fairbanks platform scales sealed 1974; 6 bicycles; garden tractor; 10 house doors; fire wood; Plus numerous other items.

TRUCKS: 1948 Studebaker w-grain box, 28,000 orig. miles; 1950 Ford F-6 stake body w-hyd. hoist; 1950 F-8 Ford w-crane.

NOTE: All equip. is in good shape, ready to go. Reason for sale - No help.

Terms - Cash.

Refreshments Served by Church Youth Fellowship.

Sale for:

PAUL J. SIEGFREID

Sale conducted by **RALPH W. ZETTEMAYER AUCTION CO.**
Tele. (215) 285-4616

KYLE & WALLACE COMPLETE DISPERSAL

THURSDAY, MARCH 6 at 11 A.M.

LANCASTER, PA

At Charles Myers Black & White Farm, just West of Lancaster off Rte. 283. Going West from Lancaster, go by ABC stud, take next exit, turn left under bridge, then right at Flory's Mill. Coming to Lancaster from West, exit at McGovernville Road, first right to Flory's Mill, left to farm.

140 REGISTERED HOLSTEINS

Also a few top grades. All tested for interstate.
70 Cows — 40 Bred Heifers — 13 Yearlings — 15 Calves — 2 Bulls.

TOP PRODUCTION SELLING!

- 4 from 811 to 887 lbs. fat.
- 9 from 700 to 775 lbs. fat.
- 15 from 601 to 688 lbs. fat.
- 13 from 506 to 599 lbs. fat.
- (Seven at 2 years of age).
- 5 from 21,000-24,000 lbs. milk
- 4 more over 20,000 lbs

19 WHIRLHILL KINGPIN DAUGHTERS INCLUDING ONE SELLING WITH A "CONTRACT".

His contract daughter is VG with 759-22,091 at 4 years. She is from an "Ivanhoe" dam and is due July. Her yearling daughter by "Elevation" sells Other good "Kingpin" daughters selling include one VG with 887-24,328 and another with 830 fat

6 Daughters of "Elevation" - 15 Bred to him.

Other sires include Arlinda Chief (2), Astronaut (1), Pencor (7), Tidy Gent (8), Transmitter (6), Lucky (5), and others

ROLLING DHIA AVE. Jan. '75 15,818 M 3.7% 590 F

SALE ARRANGED BY:

CHARLES C. MYERS
Lancaster, PA

AUCTIONEERS:

R. AUSTIN BACKUS, INC.
Mexico, NY

Contact Mr. Myers in advance of sale for credit, his phone: 717-569-2106.

LOUDON KYLE & RONALD WALLACE

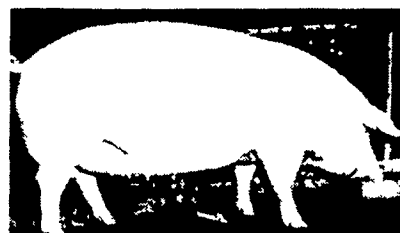
Owners, Mackeyville, PA
717-726-3431 and 717-726-4001

PENNSYLVANIA LANDRACE ASSOCIATION STATE SHOW AND SALE

SATURDAY, MARCH 15, 1975

SHOW 10:00 A.M. SALE 1:00 P.M.

Location Lebanon Area Fair Grounds, Intersection of Cornwall And Evergreen Rds Lebanon, Pa



Landrace, the Great White Breed

LANDRACE TRADE MARKS

- 50 HEAD -

Bred Gilts - Open Gilts - Boars

The original lean meat breed.
The world's best mothers.
More capacity to produce.
An asset to any herd.

FOR CATALOGS WRITE TO:

Jay D. Blatt, Secretary
Pennsylvania Landrace Association
RD2, Annville, Pa. 17003
Phone 717-865-4842

OR
Harold Mummert, President
RD1, Seven Valleys, Pa 17360
Phone 717-741-2170