

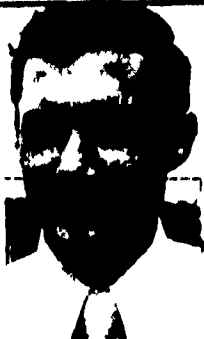
DHIA Monthly Report

(Continued from Page 59)

Paul B. Zimmerman RH 29	35.0	88.4	48.4	4.1	1.98
Lloyd H. Ranck RH 32	48.9	92.5	49.7	4.0	1.98
R. Edwin Harnish R&GrH 30	41.0	95.7	46.9	4.2	1.97
Calvin D. Beller RH 33	52.8	87.7	51.8	3.8	1.95
Clyde W. Martin R&GrH 26	92.5	94.3	50.7	3.8	1.95
Henry B. Leaman R&GrH 34	28.8	92.4	47.8	4.1	1.95
John M. Smucker RH 35	47.5	86.2	50.1	3.9	1.95

FACTS FOR DAIRYMEN

by
N. Alan Bair
Associate
County
Agricultural
Agent



Quality Milk - Your Responsibility

Concern approaching hysteria might be the best way to describe the current feelings of milk industry personnel responsible for milk quality. Yes, it's true, we have more quality control today and dairymen are turning out the best product ever, but the potential for disaster is greater than ever.

There is no need to again cover the importance of presenting only top quality dairy products to the consumer. The effects of quality on sales, image and public safety are well known. With today's methods of bulk handling every dairymen must be responsible for shipping only top quality, legal and wholesome milk.

Take heed when your milk sanitarian begins to paper the walls of your milkhouse with information on antibiotics in milk. Follow the recommendations of your qualified milking equipment installer on proper washing procedures and equipment maintenance. And utilize your highly trained and competent veterinarian to keep the cows healthy.

The only possible way to end up with a quality product is to start with one.

When You Use Antibiotics.

- One person should be responsible for the medicine chest and all treatments prescribed by the veterinarian.

- Identify all treated cows so all milkers will know the cows whose milk must be discarded. You and your industry cannot afford a mistake.

- Withhold all the milk even if only one quarter is treated.

- Read directions and follow strictly the label withdrawal times. They are not all the same!

- Keep dry cow treatments separate from others. Dry cow treatments must be used at least four weeks before cows freshen. Accidental or intentional use of dry cow treatments in milking animals will produce detectable residues for at least three weeks.

- Use antibiotics sensibly. Dry cow treatments are only necessary for animals which show evidence of mastitis. Laboratory culture or the CMT should be used to determine which cows to treat.

Oxidized Flavor At The Farm

Many flavor problems can originate on the farm and many are related to seasonal changes in management. The "garlic" of spring is a good example. The "oxidized" flavor of late winter is just as important but less understood on the farm.

A tallowy, cardboardy or metallic taste is occasionally detected in raw milk at the farm. This oxidized flavor continues to develop and increase in intensity. No processing procedure or storage method will reduce the taste once it has developed.

Causes of oxidized flavor include copper or iron in the water supply or in alloys used for milking equipment surfaces. Air leaks and excessive foaming contribute to the problem.

Nutrition plays a key role in providing resistance to oxidized flavor development. Green feeds from May to October provide vitamin E which is an antioxidant. The content is stored feeds decreases rapidly.

Many animals do not get enough vitamin E, from January until put on green pasture in the spring. If your milk develops a tallowy taste, vitamin E supplementation is the answer. The tallowy taste should not develop, even if you hold raw milk in your household refrigerator for two or three days.

To correct oxidized milk

flavor problems feed 1,000 units of Vitamin E or alpha tocopherol per animal per day. After the off-flavor has been corrected, usually in 7 to 10 days, drop to 400 to 500 units per animal per day. It will probably be necessary to

maintain this level until cows receive green feed.

Costs of feeding vitamin E are at least 5 cents per animal each day. These high levels are necessary only in the case of oxidized flavor problems.

33RD YORKSHIRE SALE

Production Tested Certified Meat Tested

FRIDAY, MARCH 14 — 1 P.M.

AT THE FARM

40 BRED GILTS - 100 OPEN GILTS
25 BOARS

The Sale with the test records.

Our last Big Winner — the \$1,000.00 Grand Champion Keystone International Carcass Pig. Catalogues Available.

Brooks End and Par Kay Farms,

RENO H. THOMAS, Sales Mgr.

Beavertown, PA 17813

Phone 717-658-5821

STANLEY C. MINNICH COMPLETE DISPERSAL SALE

HOLSTEIN DAIRY HERD
MACHINERY - DAIRY EQUIPMENT
SOME HOUSEHOLD GOODS

WED., MARCH 5, 1975

STARTING AT 10:30 A.M.

Located in Cumberland Co., 4 miles south of Carlisle, Pa., along Rt. 34. 1 mile north of Mt. Holly Springs, Pa.

54 HOLSTEIN CATTLE

BANGS CERTIFIED
T.B. ACCREDITED
VACCINATED

D.H.I.A. RECORDS
PREGNANCY EXAMINED

31 Cows and Heifers in milk, some fresh, others in various stages. A good number bred for Base milk, 2 close bred heifers, 6 bred for later freshening, 6 yearling heifers, 9 younger heifers.

Herd is sired by and bred to Atlantic Breeders Co-op. A good number are 2, 3, and 4 years old. Good individual records. Current Rolling Herd Avg. 13,839M, 551F, 4 percent.

TRACTORS & FARM EQUIPMENT

Farmall M with 2-way hydraulic live PTO clutch; Farmall H with cultivators; Massey Ferguson 65 with cultivators; Kelly loader with angle blade; Horn loader; John Deere 25T Baler with No. 2 ejector; Oliver rake, direct hitch; Oliver mower No. 82; Gehl haybine; New Holland hay crusher; Oliver 3 14" bottom plow; Oliver 2 14" bottom plow with 3 point hitch.

Dunham 8' disk harrow; heavy duty disk harrow; Leroy 19' cultipacker; spike tooth harrow; 3 level spring harrows; Oliver 2 row corn planter, 3 point hitch; Oliver grain drill; New Holland 6' flail chopper; Gehl forage harvester with corn head and grass pickup; Gehl Hi-Thru blower; pipe to 46'; Oliver 1 row corn picker.

New Holland spreader, single beater; Smoker 30' elevator, rollaway conveyor; belt aluminum elevator, 16'; 2 hay racks - 1 homemade, 1 Lamco; 1 A.C. wagon, J & M Grain tank; 1 24' flat wagon; Gehl forage wagon with Grove chassis; Studebaker 4 ton, 4 horse wagon purchased new in 1910 from A. H. Murtoff in excellent condition.

Steel hay feeder; 2 fuel tanks with pumps; air compressor; Snapper 30" riding mower; lawn sweeper; hand power mower; Nomad 3 wheeler, 7 hp., 1 yr. old; aluminum row boat; feed and silage carts; small items.

DAIRY EQUIPMENT

2 DeLaval sterling milker units; 3 Hinman milker units; Chore Boy vacuum pump; utensil rack; pail; 375 Gal. C.P. Bulk Tank; strainer; etc.

SOME HOUSEHOLD ITEMS

Including Automatic Washer and GE Electric Range; etc.

Sale Order - Household - Small Items - Machinery - Dairy Equipment - Cattle

LUNCH

TENT

CATALOGS

STANLEY C. MINNICH, Owner

RD7 — Box 57, Carlisle, PA 17013
Phone (717) 486-3422

HORST & KLING, Aucts.
OTTO & GOSSERT, Clerks
NAUGLE, Pedigrees

EVERY WEDNESDAY IS DAIRY DAY

AT NEW HOLLAND SALES STABLES, INC.
New Holland, Pa.

If you need 1 cow or a truck load, we have from 100 to 200 cows to sell every week at your price. Mostly fresh and close springing Holsteins.

Cows from local farmers and our regular shippers including Marvin Eshleman, Glenn Fite, Gordon Fritz, Blaine Hoffer, Dale Hostetter, Bill Lang, H. D. Matz, and Jerry Miller.

SALE STARTS 12:30 SHARP

Also Every Wednesday, Hay, Straw & Ear Corn Sale 12:00 Noon.



FREE SAMPLE COPIES

Copies of LANCASTER FARMING are not always easy to find — they are not sold on newsstands — and perhaps some of your friends may not be acquainted with our weekly newspaper.

We'll be glad to send, without charge, several copies of LANCASTER FARMING to your friends or business associates. Just write their names and addresses below — (you'll be doing both them and us a favor!)

To _____	To _____
Street Address & R.D. _____	Street Address & R.D. _____
City, State and Zip Code _____	City, State and Zip Code _____

(You are not limited to two names. Use separate sheet for additional names.)

SEND A GIFT SUBSCRIPTION TO:

I WANT TO SUBSCRIBE.

Name _____

Name _____

Address _____

Address _____

City _____

City _____

- Enclosed is \$3 for 1 yr. [52 issues] gift subscription.
- Enclosed is \$5 for 2 yr. [104 issues] gift subscription
- Send a gift card with my name on it to the above. Sign the card: _____

- Enclosed is \$3 for 1 yr. [52 issues]
- Enclosed is \$5 for 2 yrs. [104 issues]
- I first saw Lancaster Farming:
 - In a friend's home
 - In a Agribusiness office
 - In a County Agent or other government office
 - Other [Where]

PLEASE MAIL THIS FORM TO:

LANCASTER FARMING

P.O. BOX 266, LITITZ, PA 17543