

**LOCAL CLASSIFIED ADVERTISING RATES**

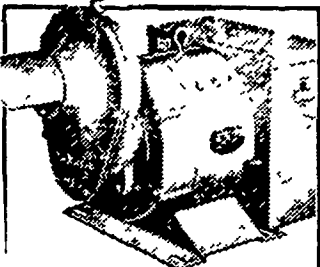
Use This Handy Chart To Figure Your Cost

Words	[1] Issue	[3] Issues
14 or Less	\$1.00	\$2.40
15	1.05	2.52
16	1.12	2.69
17	1.19	2.86
18	1.26	3.03
19	1.33	3.20
20	1.40	3.36

**KEYED ADS** (Ads with answer coming to a Box Number. c/o Lancaster Farming): 50 cents additional.  
 Ads running 3 or more consecutive times with no change billed at 20 percent discount with \$1.00 minimum. Deadline: Thursday of each week's publication.  
 Lancaster Farming  
 P. O. Box 266  
 Lititz, PA  
 Phone Lancaster 394 3047 or Lititz 626 2191

For Sale - Top buggy in fair conditions; potatoes; New Idea 205 manure spreader in good condition. Wanted - Help for farming. Aaron Z. Garman, East Earl RD2, Pa. 17519

**GRAPE AND PEACH DUSTER**, J. Bean \$125, 3 pt., \$250. Maple Lawn Farms: 717-382-4878



**Protects Your Farm Against Power Failure**

Your profits go down when power goes off! Let us show you how you can protect your family and farm from costly, annoying power outages by leasing or buying a Winpower alternator.



**DISTRIBUTOR MARVIN J. HORST**

Dairy Equipment and Amana Appliances  
 R.D.#1 (Iona)  
 Lebanon, PA

Phone [717] 272-0871  
 Located on Route 897 between Schaefferstown and Lebanon over 30 years in business at same place

**Farm Equipment**

**TRACTORS** - John Deere (4) 4230, 4430, (2) 4830, (3) 4020, 4320, 4520, 4620, (4) 3020, 5020, 4010, 630, 620. Case (new) 1070 with Cab, used 1030, 1200, four wheel drive. Farmalls - (new) 1066, 966, 100 Hydrastatic, used 1468, 1066, 1028, 1206, 856, 756, 806, 706, 656, 560, 460, 400. White - 4-150 four wheel drive, Oliver (new) 1755, 1465, used 2150, 1855, 1755, 1655, 1800, 1650. Allis Chalmers (new) 7030, 200, used 210, D21, XT190, D17. Minneapolis Moline G1000, 302, Ford (new) 8600, 6000. Massey Ferguson (3) 1100, 65.

**GRAIN DRILLS** - International 510 used 20 acres. No. 10. John Deere FBB.

**PLOWS** - International 5 and 6 X automatic reset, 4, 5, 6, 7, 8 X trip and automatic. (new) John Deere 5X18, (new) White 5X16 reset. (new) 10 foot cultimulcher. (new) White 14 foot heavy disc. (new) John Deere 1630 heavy disc.

**COMBINES** - John Deere 4400, 6600, 7700, 105, International (2) 315 with Cab, 503. Gleaner G, CII. Massey Ferguson 510, 300. New Idea 701 Uni with combine.

**CORN HEADS** - (new) John Deere 643, 444, used 435, 434, 234. Gleaner (new) G440, C II 430, F 335, A II 330, E 240. Massey Ferguson 63, 33, 44, 421, 222. International 763 six row, 4 row for 503, 228, 227. New Idea new and used 3 row 30".

**CORN PICKERS** - New and used New Idea 2 row 30" and 40" pickers. Also shellers.

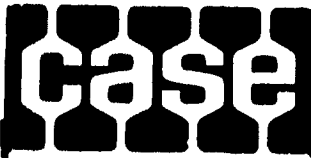
**HARVESTERS** - New Idea 702 Uni diesel with 2 row, 702 with Cab with 3 row chopper. John Deere 38 with 2 row, 34. Fox Industrial 546. International 550, 16. Gehl 115 Grinder Mixer. New Holland 1010 Stak wagon.

**HAYBINES** - Owatonna 10 foot self propelled Windrower. New Holland 469. John Deere 480. Hesston PT 10.

**PAUL STITZEL**  
 734 Windsor St.  
 Hamburg, Pa. 19526  
 Phone 215-562-8377 or 215-562-7451

Used New Holland 469 Haybine A-1 Condition.  
**EVERGREEN TRACTOR CO., INC.**  
 30 Evergreen Road  
 Lebanon, PA  
 717-273-2616

**Farm Equipment**



**NEW EQUIPMENT**  
 (5) 6 ft. Blades  
 4 & 5 ton Hawk Bilt tank spreaders  
 Coby 310 & 340 bu. spreaders  
 Little Giant 34 & 38 ft. elevators  
 10 ft. & 13 ft. cultipackers  
 3 & 4 bottom Case plows  
 Case Loader (fits 430 & 530 Case)  
 Bear Cat Grinder-Mixer Century trailer & 3 pt. sprayers  
 Kasten forage box 6, 8 & 10 ton running gears  
 1212, 1210, 995, 990, 885, David Brown Tractors  
 Case 17140 & 1816 Unit Loaders  
 Case 580 Backhoes  
 Case 1 & 1 1/2 ton Rollers  
 Case powered Compactors  
 Kools Blower

**NEW EQUIPMENT**  
 Case Garden Tractors 1975 Models - 8 to 16 H.P. in stock w-mowers, snow blowers, blades, tillers, trailers, lawn rollers.

Spring Harrows and Disc Harrows  
**NEW APPLIANCES**

2 Revco 20 cu. ft. Freezers  
 2 Revco 25 cu. ft. Freezers  
 1 Revco 15 cu. ft. Freezer

1 Kelvinator 25 cu. ft. Freezer

Also Kelvinator refrigerators, stoves, washers, and dryers in stock.

**USED EQUIPMENT**

Tractors -  
 John Deere 500A Backhoe Loader  
 David Brown Backhoe Loader  
 Oliver 16 Diesel  
 Massey Ferguson 165 Diesel  
 Case 220 tractor w-mower  
 Used 187 Hawk Bilt spreader



**Lititz RD4, PA**  
 Phone: 626-4705  
 on Rothsville Station Road  
 Farm & Ind. Equipment  
 Open Mon thru Fri  
 7 A.M. to 5 P.M.  
 Evenings and Sat. Call for Sales, Parts, Service 626-4705



Used Petter Diesel 2 1/2 H.P. \$150.  
 Used Petter Diesel 7 1/2 H.P. \$250.  
 Used M.F. 65D \$2350.00  
 Rebuilt Deutz F 4L-912 Diesel Engine 60 to 80 H.P.  
 Used 530 Case Gas w-loader \$2500.  
 Rebuilt Deutz F1L-712 Diesel, 10-12 H.P. 3 months parts warranty \$800.  
**STAUFFER DIESEL, INC.**  
 312 W. Main Street  
 New Holland, PA  
 Phone 717-354-4181

For Sale - Allis Chalmers Gleaner F Combine, 14 ft. grain head, air conditioned, straw chopper, auto. header high control, 1 year old. Phone 609-299-3910 or 609-935-4060.

Used No. 44 John Deere Spreader; used John Deere Chuck Wagon; Used Cow Mats. Phone: 717-299-2534

**Farm Equipment**

**SERVICES & REPAIRS**  
 For Allis Chalmers, New Holland, Starline, VanDale and other farm equipment.

**Tractors**  
 J.D. "A"  
 A.C. C, WD, B-with loader  
**USED FARM EQUIPMENT**  
 N.H. 68.69 & 276 Balers  
 (1) 30 ft. N.H. Elevator  
 N.H. 516 S Spreader  
 Case 140 Spreader  
 Starline and Hawk Tank Spreaders  
 12 ft. Dunham Cultimulcher  
 Woods Rotary Cutter

**ROYA BRUBAKER**  
 SALES - SERVICE  
 700 Woodcrest Ave.  
 RD3, Lititz, Pa.  
 Phone: 626-7766

For Sale - M.F. 180 D; J.D. No. 42 pull type combine; J.D. No. 483 Haybine; IH 2-row pull type husker; Ontario hoe Grain Drill on steel; J.D. 4X roll-over plow with 6 bottoms; Calhoun 8T Chuck Wagon; Bear Cat Grinder-Mixer. Phone 215-756-6150



**NEW EQUIPMENT**

Oliver 1265 Dsl Utl Tractor w/Sauder Manure Loader  
 Oliver 1365 Dsl Utl Tractor  
 Oliver 1465 Dsl Utl Tractor  
 Oliver 1655 Dsl Tractor  
 White 2-105 Dsl Tractor Cab  
 White 348 3B SAR 3 pt plow  
 White 5400 4R Aire Planter  
 Gehl 120 Hyd Mix All  
 Gehl 2500 Hydra Cat Loader  
 Gehl 500 5 Ton Wagon Gear  
 White 508 5B SAR Semi Plow  
 White 348 4B SAR 3 pt Plow  
 White 508 4B SAR Semi Plow  
 Pittsburgh 28 12 3 pt Plow  
 Pittsburgh 2B 14' 3 pt plow  
 Pittsburgh 1B 16' 3 pt plow  
 Pittsburgh 1R 3 pt cultivator  
 Woods M5P 3 pt rotary cutter  
 Woods M60P 3 pt rotary cutter  
 Woods M72P 3 pt rotary cutter  
 Woods 84 Trl rotary cutter  
 Vicon PS 500 3 pt spreader  
 Vicon PS 600 3 pt spreader

**USED EQUIPMENT**

Oliver 1650 Dsl Tractor  
 Oliver 60 Gas Tractor  
 White 2 44 Gas Loader  
 Ford 800 Gas Loader  
 Ferguson Utl Gas Tractor  
 Oliver 361 2B Cush Trip Plow  
 MM 3B 14' 3 pt plow  
 Ford 3B 12' 3 pt Plow  
 A C 1 B 16" (G-plow)  
 Oliver 2B Trl plow  
 Oliver 1B Trl plow  
 Oliver 16 7 Grain Drill  
 Oliver 13-7 Grain Drill  
 IH (Horse) Grain Drill  
 Meyers Snow Blade

**FARMERSVILLE EQUIP., INC.**

RD2, Ephrata, Pa.  
 717-354-4271  
 Store Hours  
 Daily 7 30 6 00  
 Sat 7 30 - 4 30

**Poultry & Supplies**

For Sale - Goslings, Ducklings, Chicks, price list sent on request. David Hartman, Clearview Stock Farm and Hatchery, Gratz, Pa. 17030

**Poultry & Supplies**

**Anderson Medicators**  
 For Liquid Feeding and Medications, 30 day free trial.

**Paul Hiestand**  
 Phone: 717-426-3286

For Sale - 300 Anthony Pullets, started to lay. Henry K. Beller, RD1, Christiana, Pa. along Vintage Road.

For Sale - 1500 Babcock Pullets, 20 weeks old March 14. Apply to Daniel Kauffman, Honey Brook, RD2, Pa. 19344

18,000 Pullets - Cage Grown. 20 weeks Feb. 12, 1975. Health records & prices available on request. Phone 215-723-4355.

Many Breeds of Goslings, Ducklings, Guineas, Chicks and Turkeys.

**HOFFMAN HATCHERY**  
 GRATZ, PA. 17030

**FOR SALE:** Used equipment very good condition. SR-30 Egomatic Candler & Grader - Kuhl Washer; 15 cps Kuhl Washer - Egomatic Grader; SR-40 Egomatic grader & Candler updated with four new inline & Carton Closers. 30 Case Per Hour Seymour Speed Pak Translink 9 ft. long. Egomatic Grader D5V-5. One Ton Burch Cooler-Humidifier. For all your poultry supplies call Jim Enck, Modern Poultry Supplies. 717-299-0828 or 717-397-5850.

**Poultry & Supplies**

**BABY CHICKS**

Ready to Lay Pullets  
 White & Brown egg Birds  
 Broiler & Roaster Chicks

**MOYER'S CHICKS, INC.**  
 Quakertown, Pa.  
 Ph. 215-536-3155

Wanted to Buy - Mallard ducks at \$4.00 per duck. If have some to sell call collect 301-778-0368

For Sale - New High Pressure round waterers, low price.

**PAUL HIESTAND**  
 Phone: 717-426-3286



**LAYERS**

**GREIDER LEGHORN FARMS, INC.**

Phone 653-1855  
 MOUNT JOY RD1, PA

**LONGENECKER'S HATCHERY**  
 Box 317, Elizabethtown, PA Ph: (717) 367-1545

---

**J. J. WARREN SEX-SAL**  
**STARTED PULLETS, 20 WEEKS SEX LINKS**

1200 April 21	3500 July 29
700 May 27	3500 Sept. 22
2500 June 30	

Wanted - House for Leghorn Breeder Flock, 10,000 sq. feet.

**ANTHONY STRAIN CROSS WHITE LEGHORNS**

**Baby Chicks and 20 Week Old Started Pullets**

58 years of breeding our well known Laying Strain Cross White Leghorn is your assurance of.

**GOOD LIVABILITY  
 PROFITABLE PRODUCTION  
 EXCELLENT SHELL QUALITY  
 GOOD INTERIOR EGG QUALITY  
 LARGE EGG SIZE**

Order now for this Spring and Summer

**George M. Anthony & Sons**  
 Strausstown, Pa. 19559  
 Tel.: 215-488-6211  
 (Call Collect)

**AGRI-EQUIP.**

**Cattle - Hog - Poultry Equipment**

PLUMBING and ELECTRICAL

R.D.#2  
 EPHRATA, PA. 17522  
 ?FARMERSVILLE

PHONE  
 BUS. 717-354-4271

**FREY BROS. MFG.**  
 QUARRYVILLE, PA. PHONE (717) 786-2146

Farm Gates	Automatic Wagon Hitch
Head Gates	Ritchie Waterers
Calf Creep	Electric Gates
Steel Fence	Al Chutes
Free Stalls	Ear Tags
Loading Chutes (Slop Stops)	Feed Bunks
Steel Buildings	Hay Racks

**WRITE FOR FREE CATALOGS**