

# Public Sales Register

(Continued from Page 62)  
 miles South of Quarryville.  
 Sale by Jason Weaver,  
 Kreider and Diller, Auc-  
 tioneers.

MON. FEB. 24 - Public Sale  
 of Farm Equipment, Feeder  
 Cattle and ear corn by  
 Freeland D. Sensenig, RD1,  
 Leola, Pa. John E. and Paul  
 E. Martin, Auctioneers.

MON. FEB. 24 - 12 noon  
 Public Auction, Spring Farm  
 Machinery Sale to be held at

Rudnick's Farm, Route 214  
 Galena, Md. Harry Rudnick  
 & Sons, Inc., Sales Managers  
 and Auctioneers.

MON. FEB. 24 - 10:30 a.m.  
 Public Sale of Farm  
 Equipment on the John F.  
 Cope Farm located at RD1,  
 Manheim, Pa., 1 mile south-  
 west of Rutt's Country  
 Auction off Rt. 72 between  
 Manheim and East Peter-  
 sburg, Pa. Sale by Com-  
 monwealth National Bank  
 Irene G. and Tom Cope,  
 Executors for the John F.

Cope Estate, Lee Mummau  
 and C. H. Wolgemuth,  
 Auctioneers.

TUES. FEB. 25 - 11:30 A.M.  
 Public Sale of Modern Farm  
 Equipment, Trucks, and  
 Angus Cattle located approx.  
 3 miles north of Fogelsville,  
 one mile west off Rt. 100  
 along blacktop road between  
 Claussville and Seipstown,  
 Weisenberg Twp., Lehigh  
 Co., Pa. Sale by J & M  
 Farms Co.; Ralph W. Zet-  
 tlemoyer, Auctioneer.

TUES. FEB. 25 - Public Sale  
 of Farm Machinery located  
 1 1/2 miles West of Christiana,  
 4 miles South of Gap, along  
 Route 372 in Sadsbury  
 Township, Lancaster  
 County, Pa. Terms by John I  
 Yoder, Christiana, Pa. Leroy  
 Zook and Leon Kurtz,  
 Auctioneers.

TUES. FEB. 25 - Public Sale  
 of 70 Head of Registered and  
 Grade Holstein Dairy Cattle  
 also Farm Equipment  
 located 2 miles Southwest of  
 Mt. Joy, Pa., Route 141 to  
 Donegal High School turn  
 south, 1 mile along Union  
 School Road. Sale by Paul  
 Hess and Aaron G. Fisher,  
 Harold (Abe) Shaffner,  
 Auctioneer.

WED. FEB. 26 - 12:00 Noon  
 Registered and Grade  
 Holstein Dispersal located  
 4 1/2 miles east of  
 Elizabethtown, along  
 Elizabethtown Road, mid-  
 way between Risser Men-  
 nonite Church and  
 Drumhellers Garage, 1 mile  
 off Rt. No. 283 (Rheems  
 Exit). Sale by Rhoda G.  
 Risser, RD3, Elizabethtown,  
 Pa. Carl Diller and J.

Everett Kreider, Auc-  
 tioneers.

WED. FEB. 26 - 9:30 A.M.  
 Complete Dispersal Sale of  
 Dairy Herd, Dairy Equip-  
 ment, Farm Equipment,  
 Truck, Some Household, etc.  
 located in York County, Pa. 4  
 miles east of East Berlin or 8  
 miles west of York on Route  
 234, turn north at  
 Shadydell Rd., 1/4 mile.  
 Terms by Paul H. Myers, Jr.  
 and Virginia L. Myers,  
 Owners, Thomasville, Pa.  
 Clair R. Slaybaugh, Auc-  
 tioneer.

THURS. FEB. 27 - Dairy  
 Dispersal and Farm  
 Equipment for John S.  
 Martin, RD1 Denver Pa.,  
 along South Muddy Creek  
 Road. Randal Kline, Auc-  
 tioneer.

THURS. FEB. 27 - and SAT.  
 MARCH 8 - 10 a.m. 2 Day  
 Sale of Dairy Cows, Feeds,  
 Grains, Farm Machinery &  
 Household Good located 1  
 mile east of Oley, along Rt.  
 662, Oley Twp. Berks Co. To  
 be sold on Feb 27 - 45 head of  
 mostly Hols. dairy cows,  
 Milk equipment, Feeds and  
 Grains. To be sold on Sat.  
 March 8 - Farm Machinery  
 and Household Goods. Sale  
 by George S. Schlegel; John  
 D. and George D. Frey,  
 Auctioneers.

THURS. FEB. 27 - 11 A.M.  
 Public Sale of Modern Farm  
 Equipment, Milking  
 Equipment and Trucks.  
 Take Rt. 611 south for 9 miles  
 from Easton toward  
 Riegelsville, turn right onto  
 Spring Hill Rd. to 1st farm,  
 in Durham Twp., Bucks Co.,  
 Pa. Sale by Young Bros.;

Ralph W. Zettlemoyer,  
 Auctioneer.

THURS. FEB. 27 - 12 Noon  
 Penn-Octo Farms Public  
 Sale of 85 Head. All cows in  
 herd due Dec. 1 to April 1 and  
 all bred heifers. Sale to be  
 held at the Charles C. Myers  
 Black and White Sale Barn  
 located just West of Lan-  
 caster on Dairy Lane. Take  
 283 West of Lancaster, exit  
 just beyond the ABC Stud  
 Barns at Flory's Mill Rd.  
 Turn left after exiting go  
 right around mill to sale  
 barn. R. Austin Backus, Inc.,  
 Auctioneers, Mexico, N.Y.

FRI. FEB. 28-11 a.m. Public  
 Sale of 80 Head of Reg.  
 Holstein Dairy Cattle, 2  
 tractors, other equipment,  
 hay and corn located 5 miles  
 East of Lancaster, 1/2 mile  
 South of Rt. 23 from Meadow  
 Brook Farmers Market at  
 2453 Creek Hill Road. Sale by  
 Mark T. Stoltzfus, owner;  
 Norman Kolb, Pedigrees and

Abe Diffenbach, Auctioneer.  
 FRI. FEB. 28 - Public Sale of  
 Farm and Dairy Equipment  
 located just 1/2 mile North  
 East of Strasburg. Sale by  
 Stanley Groff, Kreider and  
 Diller, Auctioneers.

FRI. FEB. 28 - 12 Noon  
 Public Sale of Farm  
 Equipment, Irrigation  
 System, Trucks, Potato  
 Equip., Barn located approx.  
 15 mi. northwest of Allen-  
 town, Pa. along blacktop  
 road between Lynnville and  
 New Tripoli, Lynn Twp.,  
 Lehigh Co., Pa. Sale by  
 Philip Snyder; Ralph W.  
 Zettlemoyer Auction Co.,  
 Sale conductor.

FRI. FEB. 28 - 10 a.m. Public  
 Sale of 70 Head of Livestock  
 and Farm Equipment  
 located on Belmont Rd.  
 between Rt. 340 and Rt. 30  
 approx. 11 miles East of

(Continued on Page 64)

## EVERY FRIDAY

### STOCKER and FEEDER AUCTION SALE

NEXT SALE FEBRUARY 14, 1975

Starting Time 12:00 Noon  
 Penna. Largest Weekly Sale of Cattle  
 All Grades, Breeds, Weights  
**LANCASTER STOCKYARDS, INC.**  
 PHONE 717-394-2611

## PUBLIC SALE OF LIVESTOCK, FARM EQUIPMENT, DAIRYING EQUIPMENT, HOUSEHOLD GOODS

SAT., FEBRUARY 22, 1975

Located one mile east of Route 41 from Aiglen, two miles west of  
 Parkesburg, along Route 372, the Lower Valley Road, Chester County  
 Penna

#### LIVESTOCK

Twenty Six Head of Holstein Dairy Cows  
 Many recently fresh, several close springers. Herd  
 consists mostly of first, second and third calf cows.  
 Four Holstein heifers, one bred. Certified Herd.

#### Twelve Head of Mules

Eight mule team to be hooked to Gruber wagon day  
 of Sale. Several pair of good mate-young mules. All  
 Broke and Sound. Two Pair of good work horses.  
 Twelve Driving Horses.

#### FARM EQUIPMENT

Ford "3000" tractor with Power Steering and  
 following equipment: Ford 1-row fast mount corn  
 picker; Ford 3-bottom plow; Ford No. 501 7' grass  
 mower; David Bradley cultivators; Mechanical one  
 row transplanter; 6' scraper-blade; Sauder Bros.  
 manure loader.

John Deere "2010" tractor with Power Steering.  
 New Holland Super "68" baler; McD 16" harvester  
 with corn and hay heads; New Holland Chopper; Allis  
 Chalmers hay crimper; Papec 19" ensilage cutter with  
 pipe.

Massey Harris No. 50 combine with bin; New  
 Holland 130 bushel manure spreader; Cockshutt  
 manure spreader; John Deere 12 disc grain drill; John  
 Deere 28 and 20 disc harrows; McD and John Deere 4-  
 bar side racks; two 16' low down wagons, one a Grove;  
 New Idea lime and fertilizer drill; John Deere 3-section  
 spring harrow; hay tedder.

Oliver corn planter with fertilizer attachments; two  
 McD riding cultivators; fore cart; Lapp 28' elevator.

Gruber wagon; two new brake carts; saw and saw  
 buck; weeder; dirt scoop; water trough on wheels; bag  
 wagon; P.T.O. cyclone grass seeder; ensilage  
 distributor; spring wagon seat; air compressor; 500  
 tomatoe baskets; cast iron hog troughs; tractor  
 chains; 280 gallon gas tank; sled.

1, 2, 3 horse hitches; wagon tongue; six sets of front  
 gears; collars; bridles; stripping room stove; plat-  
 form scales.

#### DAIRY EQUIPMENT

Three Surge milking units, two 50 lb. and one 45 lb.  
 pails; carrying pails; feed carts; six milk cans;  
 electric fencer; fly sprayer.

#### HOUSEHOLD GOODS

Square extension table with six boards; buffet;  
 Philco refrigerator; clothes cupboard; sink; bookcase  
 and desk combined; china closet; washstand; bureau  
 with bookcase top; two chests of drawers; kneehole  
 desk; iron and copper kettles; kettle furnace; dishes;  
 jars; and many other articles.

Sale at 11:00 A.M.

**JOHN K. KING**  
 Owner

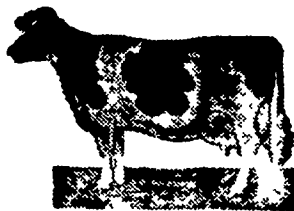
Abe Diffenbach, Jr.  
 Abe Diffenbach, Auctioneers  
 LUNCH AVAILABLE

## REGISTERED AND GRADE HOLSTEIN DISPERSAL

WED., FEBRUARY 26, 1975

Location: 4 1/2 miles east of Elizabethtown, along  
 Elizabethtown Road, midway between Risser Men-  
 nonite Church and Drumhellers Garage, 1 mile off  
 Rt. #283 (Rheems Exit).

**75 HEAD**  
 Including 14  
 Registered



50 milking age, 8 Bred, 7 Heifers breeding  
 age, 10 younger

- #54 (Performer) 4v 5m 357d 19,478m 3.5% 673f
- #62 Reg. Jack 4v 3m 297d 19,052m 3.1% 588f
- #21 (Performer) 4v 11m 346d 18,539m 3.7% 691f
- #8 (Performer) 3v 5m 301d 16,100m 3.2% 518f
- Red (Performer) 5v 2m 286d 15,148m 3.8% 573f

Sires with dtrs selling Performer-8, Kenny-5, Ivan-  
 hoe Star-10, Gay-8 others by Milk & Honey, Rocket,  
 Stylemaster, Optimist, London, Hector  
 Bangs & TB tested with charts Preg Checked. In-  
 culcated for IBR

#### Owner Sampler Records

Several due early summer, many due in the fall,  
 lots fresh during the winter and in full flow

Cows in the herd now milking 70 to 80 lbs Several  
 have milked 85 to 100 lbs 100' home raised; Atlan-  
 tic Sired. Many 1st, 2nd and 3rd calf animals sell  
 Plenty of size and Dairy Quality.

#### Catalogues Sale in Tent

Sale made necessary due to the untimely death of the  
 owner  
**Wednesday, March 12th full line of good farm equip-  
 ment sells**

Sale at 12:00 Noon by  
**RHODA G. RISSER**  
 R#3, Elizabethtown, Pa.

Aucts.: Carl Diller 464-2233  
 J. Everett Kreider 284-4517  
 Lunch

## PUBLIC SALE

### OF REAL ESTATE PERSONAL PROPERTY

SAT., FEBRUARY 15, 1975

Located 5 miles southeast of Strasburg, 1/2 mile west of Route 896  
 from Georgetown, along Furnace Road Bart Twp., Lancaster County,  
 Penna

#### REAL ESTATE

##### 22 ACRES, MORE OR LESS

Stone house with new frame addition. Six rooms on  
 second floor, Two rooms, enclosed porch and large  
 live-in kitchen with modern cabinets on first floor. 1 1/2  
 baths. Full basement.

Barn for carriages and livestock. Concrete block  
 garage with pleasant workshop. Stable room on lower  
 level.

Macadam driveway. Lots of road frontage. Pasture,  
 spring, stream and good well. Inspection of property  
 anytime except Sundays.

#### LIVESTOCK

Guernsey heifer, due in September, Holstein bull,  
 two angus and two holstein steers. All home raised.

Twenty-three ewes with some lambs, mostly young  
 Miniature Schnauzer, trained border collie.

Pair of mules, broke for boys, fast walkers; 5 year  
 old buggy horse, snappy, well broke; outstanding 5  
 year old carriage horse, plenty of size, with record of  
 2:10; standard bred 4 year old gelding, green broke; 5  
 year old mare in foal to Waltermyers 15 hand jack, well  
 broke either side; Belgian horse, all-day workers;  
 standard bred yearling stud; nine year old mare, broke  
 for women to drive, strong a long trip mare; 11 year old  
 buggy mare, plenty of spirit, broke for women to drive  
 These horses are all snappy and traffic safe.

#### FARMEQUIPMENT

Mud mixer with diesel engine; table saw with gas  
 engine; Holland stone cutter, Hydra splitter; two  
 hydraulic jacks; spring wagon with cattle racks, good  
 shape; Amish carriage, like new; sleigh; bob sled;  
 fore cart; wire reel on wheels; platform scales; two 275  
 gallon tanks; two hole hog feeder; steel posts; 4000  
 tobacco lath; lumber; wooden gates; wagon wheels;  
 wheel barrow; wheelbarrow tub and wheel; barbed  
 wire; 125 chimney blocks; pig blanket heater; 65,000  
 b.t.u. gas heater; fire wood.

Harness; collars; double trees; checklines, like new;  
 bridles; now jockey sticks; new horse blankets.

Office desk; filing cabinets; safe; bottled gas light;  
 gas heater; coal and wood space heater; gas lantern;  
 two water pump jacks; two wood ladders.

#### MASONRY & CARPENTER TOOLS

Most of these tools are in A-1 condition; Wright saw  
 with 20" blade; Berger transit; 18" jiz saw; Stay true  
 Story scales for bricks; tool boxes; Mitir box with 26"  
 blade; wedge times; large vise; new roof jacks; buck  
 saw; handy-man jack; jacks; hand tools.

#### AND SOME ANTIQUES

Tobacco sizing boxes; hay hook; old hay fork; cast  
 iron fire place with hot water heater and mantel; iron  
 kettles; old milk separator; crocks; jars; wood box;  
 floor and sugar chest, combination; dishes, pots and  
 pans; clocks; old bottles; small tables; wash stand;  
 couch; beds and dressers; chairs; two old extension  
 tables one with claw feet; china cupboard with glass  
 doors; butter churn; dough tray; Singer 6-drawer  
 sewing machine; school desk; writing desk with glass  
 bookcase top; clothes wringers; wooden cased ice box.

#### HOUSEHOLD GOODS

Meat slicer; arm chair; two platform rockers;  
 child's platform rocker; large gas pie and bread  
 baker; will bake 40 pies; gas refrigerator with two  
 doors; cabinet; rug frames; chairs; books and puz-  
 zels; porch swing, etc.

**JACOB E. FISHER, Owner**

Sale at 12:00 Noon.

Real Estate at 1:00 P.M.

Abe Diffenbach and Abe Diffenbach, Jr., Auc-  
 tioneers.

Lunch Available.