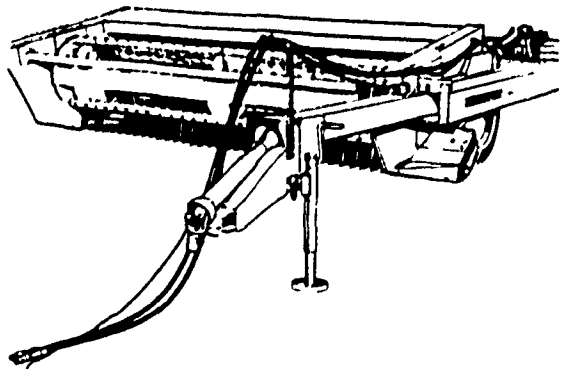


Know Where the Activities Will Be?  
Read the Farm Women Calendar.

# Treating Water Quality Problem

**HESSTON** PULL-TYPE  
PT-10 Windrower

Save the leaves  
in windrows or swaths!



This medium-sized pull-type windrower with direct-feed hay flow through 110-inch conditioner rolls lets you build high fluffy windrows or fast curing swaths. See the conditioner rolls that give a gentle positive cracking action that lets moisture evaporate while nutrient-laden solids are retained. Compare the quality Hesstonized Hay to that produced by intermeshing rolls that mangle the crop, squeeze out plant juices and create a vortex air motion that blows a green cloud of precious leaves into the air. See the PT-10 today!



**STAUFFER  
DIESEL, Inc.**  
312 W. Main St.  
New Holland, Pa.  
Phone 717-354-4181

A lot of people with private water systems have trouble with water quality. There are a number of problems that can exist, but they can all be treated successfully, says Ernest W. Walpole, University of Delaware extension agricultural engineer.

The two basic types of water contamination are (1) bacterial contamination and (2) contamination from mineral or other substances that affect water color, taste and quality.

From a health standpoint, bacterial contamination is the more serious problem. It is most likely to occur with a dug well, less so with a drilled well. If you have a dug well on your property or are considering buying a house supplied by a dug well, you may want to have the water tested. This service is provided free in Delaware by your county Office of Environmental Health, a branch of the State Division of Public Health.

In checking the water quality in a private well, the Office looks for two things — first, the construction of the well itself; secondly, the purity of the water from a

bacterial standpoint. Dug wells are particularly susceptible to contamination from surface water runoff and the entrance of foreign objects which can pollute. If the construction of a well is faulty, so that contamination is a strong likelihood, this condition will need to be corrected before a water quality check is made by a state inspector.

What are the characteristics of a good dug well? It should be at least 20 feet deep and its walls should be solid down to 10 feet. The well should be grouted from the outside. The top of the well should be at least 18 inches above the ground and it should have a tight-fitting lid.

Location of either a dug or drilled well in reference to your sewage disposal system is also critical. The well should be upgraded at least 50 feet from a septic tank, and at least 100 feet from the absorption bed in order to prevent contamination from waste water.

Contamination of water from mineral or other substances — though less serious in terms of your health — can be quite in-

convenient. There are a number of impurities that can be present in your water supply. They include iron contamination, acid water, hard water and dirt sedimentation.

Brown stains in the toilet bowl of a house you are considering buying are an indication of either iron mineral or iron bacteria contamination. Iron bacteria are fairly common in water around Delaware, Maryland and New Jersey, says Walpole. They feed on the iron in the water and look like a chocolate-colored jelly in pipes.

Water with a high pH level is another fairly common problem in this area. The main effect of acid water will be a metallic taste. Hard water is caused by calcium from limestone.

All these conditions can be treated by chemical additives or by filtering, says Walpole. It is best to get help from a water treatment specialist in dealing with them. In fact, get a couple of analyses and suggested remedies before hiring anyone to do the job.

Just about all the problem water conditions you are

likely to find in this area can be corrected, assures the engineer. So there's no need to put up with water that stains your clothing and plumbing, that tastes bad or is otherwise unsatisfactory.



Elvin Hess

## Hess Completes Course

Elvin Hess of Strasburg, Pennsylvania, has successfully completed the Genetic Mating Service (GMS) course, according to an announcement by Richard G. Smith, Manager, Genetic Mating Service. GMS, a program founded by American Breeders Service, a division of W. R. Grace & Co., is the evaluation of strengths and weaknesses on an individual cow basis, combined with production information under a uniform coding system. Data is fed into a computer by ABS. The computer will make up to a maximum of 2000 decisions for the best sire recommendation for each individual cow evaluated.

Hess, a native of Pennsylvania, was reared on a dairy farm and was a graduate of West Lampeter High School. He has been a leader in the state for the Holstein breed. He served as Pennsylvania State Holstein President and was a delegate to the National Convention of the Holstein-Friesian Association.

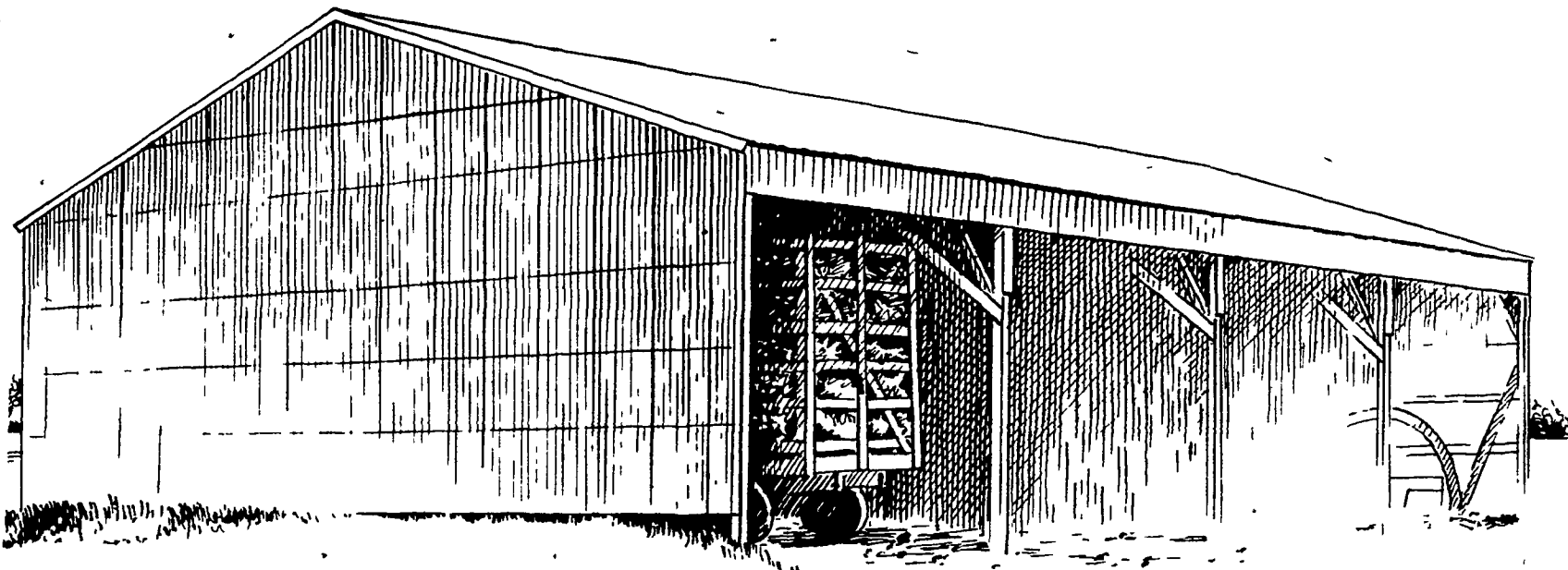
## Manor Dairy Club

Members of the Manor 4-H Dairy Club met recently at the home of Loretta Doss of Oxford, Pa. Jim Stanton, president, presided at the meeting with 13 members in attendance.

Stanton gave a report on his trip to Columbus, Ohio, with the State's 4-H Judging Team.

New officers elected at the meeting were: Eddie Henley, president; Jeannett Kauffman, vice-president; Debbie Reynolds, secretary and William Henley, news reporter, with Linda Rohrer and Loretta Doss as song and game leaders.

# LOW COST MACHINERY STORAGE



30' x 48' x 12'  
OPEN FRONT

**\$3,940.**

**CONTACT THESE REPRESENTATIVES  
FOR ADDITIONAL HELP IN PLANNING YOUR NEW BUILDING.**



**WILMER MARTIN**  
Home Phone  
(215) 445-5652



**MELVIN STOLTZFUS**  
Home Phone  
(717) 392-0066



## SUPPLY CENTER

1027 DILLERVILLE ROAD,  
LANCASTER, PA.

PHONE 717-397-4761

**BRUNING**  
PAINT

I will do your spray paint job right and personally at a more reasonable rate with the latest equipment

**BRUNING  
COUNTRY SQUIRE**

Phone (AC)  
215 445 6186

**PHARES HURST**  
RD1 Narvon, Pa 17555