

# Home on the Range

We are still waiting to receive some recipes that were used during the Revolutionary War period or in the 1700's. If you have any recipes that fit into the category, please send them along to us.

Next week will be Valentine's Day and although most cooks are watching their pennies while creating dishes for their families, why not try making a special dessert for the event by using cherry or strawberry flavored gelatine? Most gelatine desserts cost from only 8-16 cents a serving depending on ingredients.

For a starter why not try

the following recipe chosen especially for our readers.

xxx

### Strawberry Special

- 1 large package strawberry or strawberry-banana gelatine
- 1 small bowl non-dairy whipped topping
- 1 small package frozen strawberries

Defrost strawberries allowing them to stand at room temperature for a few minutes. Prepare gelatine and let it thicken to egg white consistency.

Combine whipped topping and  $\frac{3}{4}$  of the (drained) strawberries in a bowl. Stir to mix with rotary beater or by hand until mixed well.

Remove  $1\frac{1}{2}$  cups of gelatine mixture from the pan. Pour whipped topping mixture over the bottom half of gelatine and pour remaining gelatine over the topping carefully. Arrange remaining strawberries on the top along with coconut or small marshmallows. Chill and serve.

xxx

### Cinnamon Buns

- 1 tablespoon yeast
- $\frac{1}{4}$  cup melted lard
- $\frac{3}{4}$  quart warm milk
- $1\frac{1}{2}$  cups granulated sugar
- 2 tablespoons salt
- 2 eggs

Add enough flour to make a nice dough. Let rise then knead and let rise again. Roll out about  $\frac{1}{2}$ -inch thick, spread with margarine and sprinkle with granulated sugar, brown sugar and cinnamon on top. Then roll up and cut in about  $\frac{1}{2}$  inch slices. Put in pans to rise before baking.

Esther Brubaker  
Stevens

xxx

### Chicken Noodle Casserole

- 8 ounce package noodles
- 2 cans mushroom soup
- 2 cups milk
- 2 teaspoons salt
- $\frac{1}{8}$  teaspoon pepper
- 2 tablespoons chopped onion
- 2 cups frozen peas and carrots
- $1\frac{1}{2}$  cups chopped chicken

Cook noodles in chicken broth. Combine soup, salt, pepper and milk. Add remaining ingredients. Pour into casserole. Bake 45 minutes at 350 degrees.

Susan Burkholder  
Lebanon

xxx

### Cherry Angle Food Cake

- Sift together three times:
- 1 cup cake flour
- $\frac{3}{8}$  cup granulated sugar
- $\frac{1}{4}$  cup cherry flavored jello

Measure in a large bowl:

- $1\frac{1}{2}$  cup egg whites
- $1\frac{1}{2}$  teaspoon cream of tartar
- $1\frac{1}{2}$  teaspoon salt
- $1\frac{1}{2}$  teaspoon vanilla
- $\frac{1}{2}$  teaspoon almond extract

Beat with a rotary beater until stiff. Gradually add  $\frac{3}{4}$  cup white sugar, 2 tablespoons at a time. Beat 10 minutes after each addition.

Sift flour, sugar mixture, gradually over egg white mixture folding in with a spoon. Bake in an ungreased tube pan at 350 degrees until cake tests done.

Mrs. Elam Martin  
New Holland

xxx

### Beef Chowder

- 2 pounds ground beef
- 1 cup chopped celery
- $\frac{1}{2}$  cup chopped onion
- one-third cup chopped green pepper
- 2 - 10 ounce cans cream of celery soup
- 1 quart canned tomatoes cut up
- 1 quart whole kernel corn salt to taste

Cook beef, celery, onion and green peppers till soft. Add remaining ingredients and simmer one hour.

Mrs. Frank Hurst  
East Earl

xxx

### Walnut Custard Pies

- 1 cup brown sugar
- $\frac{1}{2}$  cup molasses
- $\frac{1}{2}$  cup walnuts
- 2 cups water
- 4 eggs
- 1 teaspoon baking powder
- 3 tablespoons flour

Combine ingredients and bake.

Ruth Hoover  
East Earl

xxx

### Fried String Beans

Boil string beans until tender, then drain water off and fry till brown. Serve with ketchup or applesauce.

Nora Holt  
New Holland

xxx

### Veal Cutlets

Veal cutlets are thin boneless slices cut from the round (leg) of veal (animals less than three months old)

# Farm Women Calendar

Saturday, February 8

Farm Women Society 25 meeting at 1:30 p.m.

Wednesday, February 12

Farm Women Society 14 meeting at the Ambassador for Christ, Inc. in Paradise.

Thursday, February 13

Farm Women Society 21 meeting at Mrs. Howard Steinberg's in Quarryville - program artificial fruit making.

Farm Women Society 13 meeting at 7:30 p.m. - Valentine Party.

Farm Women Society 9 meeting at 12:30 p.m.

Saturday, February 15

Farm Women Society 12 meeting at 1:00 p.m. at the home of Mildred Kindig - craft program.

Farm Women Society 5

Berks County - Hoe Down at the Stouchsburg Fire Hall from 8:00 p.m. - 11:00 p.m.

Farm Women Society 18 meeting at entertain Society 4 at the Farm and Home Center beginning at 12:30 p.m.

Please Note

We are still waiting to receive booklets from many of the Farm Women Societies. If your Society has not sent a booklet to us we would appreciate them as it is a help to us in publicizing meeting dates. We invite Societies from York, Chester, Lebanon and Berks to also send along program booklets.

## UNCLAIMED FREIGHT COMPANY and LIQUIDATION SALES

THIS WEEK ONLY - WE HAVE 4 LARGE WAREHOUSES FULL OF MERCHANDISE OF EVERY TYPE - DUE TO SO MANY DEALERS REFUSING MERCHANDISE - BECAUSE OF THEIR OVER STOCKING & BEING DOUBLE SHIPPED - BANKRUPTCY - AND GOING OUT OF BUSINESS - WE PURCHASED FROM MANUFACTURERS & FREIGHT COMPANIES - ALL MERCHANDISE LISTED BELOW & MOST ALL ITEMS IN THE STORE WE WILL GIVE AN ADDITIONAL - 10% OFF - STARTING THE WEEK OF FEB 7TH

SORRY - BUT NO 10% ON ITEMS WITH A STAR

15 - 12" POWER SAWS - Ordered by dealer for Christmas arrived late he refused we purchased Reg \$179.95 OUR PRICE \$95.00\*

25 - DICTIONARIES - UNABRIDGED - Reg \$54.95 OUR PRICE \$25.00.

LARGEST MANUFACTURER OF STEREOS CLOSING PHILADELPHIA WAREHOUSE - WE PURCHASED A TRAILER LOAD. THESE PRICES ARE UNDER WHOLESALE - FREIGHT - NO CHARGE.

17 - QUAD SETS - AM/FM STEREO - 8 Track BSR Turntable - 4 Speakers Reg \$409.00 OUR PRICE \$229.00.

38 - Same as above w/bigger speakers Garrard changer Reg \$469.95 OUR PRICE \$269.95.

11 - STEREO CONSOLES - AM/FM Stereo 8 track turntable Reg \$369.95 OUR PRICE \$179.95.

40 - STEREO COMPONENTS - AM/FM Stereo Garrard changer .10 speaker air suspension system - high wattage Reg \$469.95 OUR PRICE \$229.95.

12 ONLY - 11 BAND RADIOS - Reg \$119.95 OUR PRICE \$49.95\*

Hundreds of other stereos to choose from - Consoles - Components - Recording Units

6 - 25" COLOR-CONSOLES - Full size to the floor Reg \$669.95 OUR PRICE \$449.95\*

Thousands of Tapes Reg \$4.89 OUR PRICE \$2.00\*

18 - SEWING MACHINES - zig zag button holer - etc Made up for chain store - refused - we purchased at great savings Reg \$189.95 OUR PRICE \$79.95 w/case\*

9 - EARLY AMERICAN SOFA & CHAIR SETS - 100% Nylon - were double shipped to the largest chain store in the country We purchased Reg \$629.95 OUR PRICE \$265.00.

EARLY AMERICAN SOFA & CHAIR Reg \$549.95 OUR PRICE \$265.00.

Many more suites to choose from

150 - RECLINERS - left dealer refused from up state 50-70% OFF RETAIL

21 - CHEST FREEZERS - 15.3 cu ft deluxe model reg \$329.95 to \$369.95 OUR PRICE \$265.00.

BUNK BED SETS - Reg \$289.95 OUR PRICE \$149.95

BUNK BED SETS - Reg \$339.95 OUR PRICE \$179.95.

230 - DINING ROOM SETS - complete - buy the piece you want - refused from state and local dealers we purchased will be sold at wholesale and under Pine-Maple Oak Cherry Venerated

14 - FULL SIZE SEWING MACHINES - light weight - not cast iron built in button holer - blind stitch with true stretch stich built-in Reg \$309.95 OUR PRICE \$109.95 w/portable case

11 - SEWING MACHINES - fully automatic - light weight nationally advertised at \$389.95 OUR PRICE \$189.95.

3 - POOL TABLES - solid slate tops

MICRO-WAVE OVENS.

60 - GRANDMOTHER & GRANDFATHER CLOCKS 40-50% OFF\*

51 - PINE ROCKERS Reg \$139.00 to 189.00 OUR PRICE \$79.95\*

40 - HIDE-A-BEDS Hercules Reg \$289.95 OUR PRICE \$169.95.

DESKS - OFFICE & HOME.

TOO MANY ITEMS TO MENTION ALL - COME IN AND SEE - REMEMBER - IF YOU DON'T SEE IT - ASK FOR IT

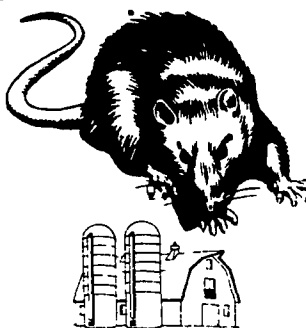
FULL WARRANTY - FINANCING THRU BANK - ACCEPTANCE COOPERATIONS - CREDIT CARDS AND LAYAWAY MOST ITEMS WE DELIVER - SOME WE DON'T - COME IN WITH YOUR TRUCK AND WAGONS

CORNER OF HEMPLAND ROAD & CENTERVILLE ROAD  
NEXT TO 84 LUMBER  
LANCASTER, PA

HOURS: MONDAY-FRIDAY 10 A.M. to 9 P.M.  
SATURDAY 10 A.M. to 5 P.M.  
PHONE: 397-6241

## EGG & POULTRY PRODUCERS!!!

ARE MICE AND RATS DAMAGING CONVEYOR BELTS & FEED??



## J. C. EHRlich CO., INC.

### PEST CONTROL

1278 LOOP ROAD LANCASTER, PA. 397-3721

Will Give You A FREE Estimate For Control and Monthly Preventive Service.

Lloyd Scheid

SERVING LANCASTER CITY AND COUNTY FOR MORE THAN A DECADE

Income tax service

At our offices  
Two Locations

- Columbia & North WEST END AVENUES
- 344 W KING ST

397-7181  
Lancaster

at your convenience  
in the privacy  
of your home

HOME TAX SERVICE

299-3931  
For Appointment

FEATURING:  
HOME TAX SERVICE

"BUY BY THE CASE & SAVE \$\$\$"

## CORKS CANNED GOODS

COUPON SPECIALS THIS WEEK

1000 ISLAND DRESSING

1 <sup>1</sup>/<sub>Gal.</sub> Jar **\$3.50**

PINEAPPLE JUICE

(3) <sup>46</sup>/<sub>oz</sub> Cans **\$1.00**

STORE: Thurs. & Fri. 9 to 8  
HOURS: Saturday 9 to 6

150 Fruitville Pike  
Manheim, Pa.

## Big John rides as good as it looks

Big John is brand-new from John Deere.

- The JDX Series sports a sleek, low profile for 1975 Painted Blitz Black™ to stand out from the crowd
- Big John JDX smooths rough trails with slide-rail suspension, energy-absorbing seat and wide-stance skis with shocks
- Big John JDX packs power from 340 to 440cc reed-valve engines
- Big John rides on a rivetless track with full-width grouser bars molded in rubber and rubber cleats for better control

Come in now... see the full line for 1975 JDX Series Green Machines Widetracker All this plus parts, reliable service, accessories fashions financing

Nothing runs like a Deere

### Special JDFP Finance Waiver.

Buy Now! No Finance Charges until Sept. 1, 1975. Offer expires March 31

**A. B. C. GROFF, INC.**  
New Holland 354-4191

**ADAMSTOWN EQUIPMENT INC.**  
Mohnton, RD2, Pa 19540 [near Adamstown]  
Phone [215] 484-4391

**LANDIS BROS. INC.**  
Lancaster 393-3906

**COLLINS MOTORS**  
RD#1 Elizabethtown  
Phone 367-1856

**GOODMAN'S AUTO SERVICE**  
Honey Brook, Pa  
[215] 273-2356

**M. S. YEARSLEY & SONS**  
West Chester 696-2990