

THE OLD FARMER'S ALMANAC

JAN. 27 - FEB. 2, 1975

Less nippy, a bit drippy.

Have you ordered your spring seeds yet? . . . Ghandi slain Jan. 30, 1948 . . . Full Wolf Moon, Jan. 27 . . . Groundhog Day, Feb. 2 (If clear, don't cheer) . . . Average length of days for the week 9 hours, 53 minutes . . . South African diamond mines discovered Jan. 27, 1905 . . . First jazz record cut Jan. 30, 1917 . . . Washington, D.C. was 73 degrees Jan. 28, 1949 . . . U.S. military draft ended Jan. 27, 1973 . . . Laws without penalties are like bells without clappers.



Old Farmer's Riddle: What could you call someone who tends sheep in Germany? (Answer below.)

Ask the Old Farmer: I had an old friend who often spoke of "hoss chestnut weather." I never asked him what it meant. Do you know? P. L., Long Beach, Calif.

Old-timers used to believe that if a man carried a hoss chestnut in his pocket it would stave off rheumatism. Our old grandfather would always grunt that "a man needed his hoss chestnut," if the weather got cold and damp.

Home Hints: An unlinked pie shell improves from storing a day or more in the refrigerator or in the freezing compartment. **Riddle answer:** A German shepherd.

OLD FARMER'S WEATHER FORECASTS

New England: Cloudy and cold to start, then thaw; end of week cold again with 1-2" snow along coast and 1" in mountains.

Greater New York-New Jersey: Week begins cloudy and cold, then turning much warmer with showers; end of week partly clear and warm.

Middle Atlantic Coastal: Rain at first, then rain changing to snow; latter part cold with showers in north and warmer in south.

Southeast Coastal-Piedmont: Most of week rainy inland with snow and sleet on Piedmont; some clearing and warming by weekend.

Florida: Rain to start in north and southeast, then cloudy and cool; end of week cloudy and cool in north and sunny and mild in south.

Upstate & Western N.Y.-Toronto & Montreal: Week begins cloudy and mild, then rain; partly cloudy and milder latter part.

Greater Ohio Valley: Heavy rain at first, then clearing and cold; end of week partly sunny and warmer.

Deep South: Week begins clear and mild, then heavy rain in central and north; fair and warmer latter part.

Chicago & Southern Great Lakes: Early week warm and rainy, then very cold; end of week partly clear and warmer.

Northern Great Plains-Great Lakes: Most of week cold with intermittent light snow; temperatures extremely cold latter part.

Central Great Plains: Heavy rain in east and flurries in west to start, then cold snap; week ends clear and mild in east and south but cold with flurries elsewhere.

Texas-Oklahoma: First part of week showers and light snow in north, and hard thunderstorms in central and northeast; end of week clear and warm in central and north, and scattered showers in south.

Rocky Mountain Region: Early week partly cloudy and mild in central with light snow elsewhere; light snow continuing to end of week throughout region.

Southwest Desert: Heavy rain in west to start, then clearing and mild; week ends partly cloudy with scattered showers.

Pacific Northwest: Cloudy and cold at first, then heavy rain mixed with snow; cloudy and cold with light snow latter part.

California: Heavy rain in south to start, then cloudy and mild; latter part rainy then clearing in north but hard rain and possible floods in south.

(All) Rights Reserved, Yankee, Inc., Dublin, N.H. 03444

**TRY A CLASSIFIED AD
PHONE
626-2191 or 394-3047**



If you have fat
cattle or
need feeders . . .

**THINK
NEW HOLLAND**

BEEF SALES

MONDAY 2:30 P.M.

THURSDAY 12:00 NOON

Sale Order - Fat Bulls, Steers, Stockers, Beef
Cows and Veal Calves

NEW HOLLAND SALES STABLES, INC.

Phone 717-354-4341

Report Phone 717-354-7288

Abe Diffenbach, Manager

Field Representatives - Bob Kling 717-354-5023

Luke Eberly 215-267-6608

Berks Young Farmer Receives Jaycee Award

Paul Kurtz with wife, Marie, and two children will receive the Outstanding Young Farmer award from the Kutztown Jaycees on Jan. 25, 1975. This award was established by the U.S. Jaycee's in 1954 and has been co-sponsored by various companies throughout the years. This year it is Chevrolet Trucks and Kerr-McGee Corporation.

The OYF project is for farmers between the ages of 18 & 35 and its sole purpose is to build better urban-rural relations by increasing urban understanding of the farmer, his life, and his problems.

The Kutztown Jaycees try to do this, for it gives us a spotlight to focus public attention on agriculture.

Public understanding of the farmer is vital today. The modern farmer is removed from yesterday's plowman. Farming today is a complex, exacting, huge business. Today's farmer not

only produces foodstuffs and the fibers needed by an expanding nation, but must keep his land alive, improve productions and conserve his natural resources.

For the farmer cannot purchase more raw materials when his is depleted and drained of life giving minerals. He must use, re-use, then use again and again the same land. There is no longer a frontier to which he may move, leaving the worn out and dead acres behind. He must covet his land. In it lies not only his life and livelihood, but the very life of his nation . . . and the world.

Paul is one of many farmers who realizes this, and because of his top notch management the Pa. State Jaycees have chosen him as one of the top 3 finalists in the state. Paul will receive his award at the State Board meeting Jan. 31 and Feb. 1 in Pittsburgh where the Ten Outstanding Young Men of



Paul Kurtz, Berks County, is shown with his wife, Maria, and their children. Kurtz was recently named as the Jaycee outstanding Young Farmer.

the state are honored.

Paul has a farm consisting of 240 rented acres where he produces corn, hay, barley, and oats. This is used to feed his 52 Holstein milk cows and 40 heifers.

Paul uses DHIA records and Farm Management Business Analysis Service to

maintain good management of his farm. Also he is involved with Interstate Dairy, where his milk is sent, as the secretary of the Kempton-local district. Paul belongs to the Oley Mennonite Church, Pa. Farmers Ass. and Holstein Fresian Ass. of Pa. and America.

Grassland FFA's Receive State Honors

Several members of the Grassland Chapter of FFA at Garden Spot High School were honored at the 46th Annual Mid-Winter Convention held in Harrisburg recently.

Eleven members received the Keystone Farming Degrees, the largest number to receive the awards in the Chapter's history.

Four proficiency awards were given to Grassland members. They included Lynn Groff - Ag Processing; Mike Martin - Poultry Production. Two second place awards were received by Mike Hartman in recreation and Art Horst in ag processing.

The Chapter also received a gold medal in the BOAC contest which represents Building Our American Communities. The award is given on the basis of im-

provement or community service.

Two sets of parents from the area received recognition for having three or more sons as Keystone Farmer recipients. They were Mr. and Mrs. John Weaver and Mr. and Mrs. David Mussér.

xxx

The Red Cross is a voluntary organization, with 1,594,020 volunteers serving in the nation's communities, 6,153,200 students participating in Red Cross programs in schools, 3,114,743 volunteer blood donors, and 36,464,592 Americans who contribute funds to its support.

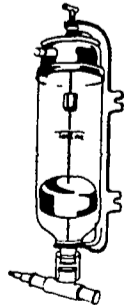
**Try A Classified Ad
It Pays!**

Why Carry Milk?

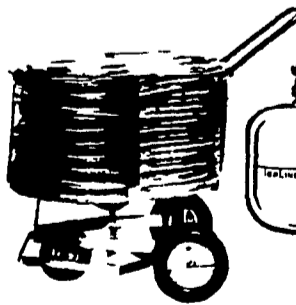
TOP LINE TRANSFER SYSTEMS

- 2 Sizes of Washer Releasers to Suit Your Needs

Also Pump Type Transfer is your Vacuum Pump isn't Large Enough.



Package B-1
WITH 1650
WASHER RELEASER
750 LBS / HOUR



Package B-2
WITH 1850
WASHER RELEASER
1250 LBS / HOUR

CALL US TODAY
LET US SHOW HOW
YOU CAN SAVE LABOR

J. B. ZIMMERMAN & SONS

West of Blue Ball, PA on Rt 23
Phone (717) 354-4955

Sweet Bulky Makes Dairy Rations even Better

Sweet Bulky really knows how to impress today's dairyman. Its ingredients, minerals, vitamins, beet pulp, dehydrated alfalfa meal AND MOLASSES tell the story - and make the feed. It's sweet and bulky just like the name implies. When mixed into dairy rations, Sweet Bulky increases feed intake because it makes feed taste better and makes it more digestible. Wayne Sweet Bulky increases intake and, by so doing, increases production.

- | | |
|--|--|
| HERSHEY BROS
Reinholds | VAN-MAR FEEDS INC.
Leesport Pa |
| STEVENS FEED MILL INC
Stevens Pa | MOUNTVILLE FEED SERVICE
R D 2, Columbia |
| HAROLD H. GOOD
Terre Hill | H. M. STAUFFER & SONS, INC.
Witmer |
| POWL'S FEED SERVICE
R D 2, Peach Bottom | JE'MAR FARM SUPPLY INC
Lawn - Ph 964 3444 |
| BRANDT'S MILL SADDLERY SHOP
830 Maple St
Lebanon Pa 17042 | WHITE OAK MILL
R D 5, Manheim |
| J C WALKER COMPANY
Gap Pa | DUTCHMAN FEED MILLS, INC
R D 1, Stevens |
| PARADISE SUPPLY
Paradise | CHARLES E SAUDER & SONS
R D 1, East Earl |



USE WAYNE ANIMAL HEALTH AIDS TO KEEP YOUR LIVESTOCK AND POULTRY HEALTHY

**Drink
More Milk**