

## Oklahoma City

January 16

Estimated Receipts 6,300  
Same Day Last Week 9,872  
Trade moderately active, feeder steers fully 1.00-1.50, instances 2.00 lower, feeder heifers 1.00 lower. Bulk of supply mixed good and choice, and choice 450-800 lb. feeder steers, 400-650 lb. feeder heifers. Moderate attendance buyers.

**FEEDER STEERS:** Couple lots choice 366-375 lb. 27.30-27.90; choice 550-600 lb. 26.25-26.75; 600-700 lb. 26.00-29.00; 700-800 lb. 26.75-29.75; 800-950 lb. 27.00-29.45. Lot mixed good and choice 371 lb. 25.10; 400-500 lb. 22.50-25.60; 500-600 lb. 22.25-26.25; few 600-750 lb. 23.50-25.25. Good 600-800 lb. Holsteins 18.00-20.60.

**FEEDER HEIFERS:** Choice 450-500 lb. 19.50-22.50; 500-700 lb. 22.25-24.25; couple small lots 707-775 lb. 23.30-23.70. Mixed good and choice 300-500 lb. 17.00-19.25; few 500-700 lb. 17.75-20.50. Few good 398-470 lb. 15.00-15.50.

**FOR THE WEEK:** Compared to the close of last week, feeder steers were weak to 1.50 lower after being as much as 2.00 higher on Wednesday under a good demand. Feeder heifers finished weak to 50 cents lower. Slaughter cows closed steady to 50 cents higher. Slaughter bulls steady to 1.00 lower. Salable receipts this week totaled near 20,000 head compared to 25,003 last week and 25,050 same period last year. Cows comprised near 14 percent of supply, while feeders were near 84 percent of total receipts.

## York Livestock

Thomasville, Pennsylvania  
January 15, 1975

**CATTLE** 140. Compared with last Wednesday's market, slaughter cows grading Cutter mostly steady. One Choice slaughter steer at 35.50, few Good 32.00-35.00, few Standard 28.50-34.25, few Utility 24.50-27.00, few Cutters 19.35-23.00. Couple Choice slaughter heifers 33.50 and 36.50, Good 28.00-33.85, couple Standard 20.50 and 22.75. Utility and High Dressing Cutter slaughter cows 18.00-19.10, Low Dressing Utility 15.50-17.10, Cutters 15.75-18.25, few Canners 13.50-15.35, Shells down to 12.00. Couple Good slaughter bullocks 33.00-33.35, individual Standard at 25.00-24.50, lot Medium and Good 600 lbs. at 24.00. Few Common and Medium 600-750 lbs. feeder bulls 14.50-18.00.

**CALVES** 51. Vealers grading Utility steady to \$2 lower. Few Choice vealers 45.00-53.00, few Good 39.00-45.00, one Standard at 30.00, Utility 90-120 lbs. 17.00-25.00, few 75-85 lbs. 14.00-16.00.

**HOGS** 37. Lot US No. 1-3 230 lbs. barrows and gilts at 39.00, few No. 2-3 255-280 lbs. 37.00-38.00. Few US No. 1-3 330-460 lbs. sows 30.00-35.00. Few Boars 23.50-24.00.

**FEEDER PIGS** 25. Lot US No. 1-3 65 lbs. feeder pigs at 23.00 per head, few Utility 30-40 lbs. 7.50-13.50, lot 100 lbs. at 26.50 cwt.

**SHEEP** 7. Lot Choice 95 lbs. wooled slaughter lambs at 42.00, lot Good 75 lbs. at 33.50.

## HOG PRICES

### Lancaster Market

**HOGS:** Barrows and gilts 50 higher.  
**BARROWS AND GILTS:** US 1 210-240 lb. 43.00-43.50; US 1-2 200-240 lb. 42.25-42.60; US 2-3 190-260 lb. 41.75-42.50.

### Vintage Auction

January 11, 1975

**HOGS** 603: Compared with last Saturday's market. Barrows & Gilts 75c to \$1 lower. US No. 1-2 200-225 lbs. 42.00-42.35, No. 1-3 200-245 lbs. 41.25-42.00, No. 2-3 245-270 lbs. 40.00-40.75, No. 2-4 270-320 lbs. 34.00-39.50. Few US No. 1-3 380-565 lbs. sows 33.75-34.50. Boars: few 27.00-27.50, few light weights 32.50-35.50.

January 15, 1975

**HOGS** 500: Compared with last Wednesday's market. Barrows & Gilts Steady to 25c lower. US No. 1-2 200-240 lbs. 41.75-42.75, No. 1-3 200-250 lbs. 41.25-41.75. US No. 1-3 300-500 lbs. sows 35.00-38.00, No. 2-3 300-600 lbs. 30.00-33.00. Boars 25.00-27.00, light weights 30.00-34.00.

### St. Louis Auction

**ST. LOUIS HOGS:** 5500. Barrows and gilts steady to 25 lower than early Wednesday.

**BARROWS AND GILTS:** US 1-3 200-240 lb. 40.75-41.25.

### Peoria Auction

**PEORIA HOGS:** 3500. Barrows and gilts opening weak to mostly 50 lower.

**BARROWS AND GILTS:** 105 head US 1 41.50; US 1-2 200-230 lb. 41.00-41.25; US 1-3 200-240 lb. 41.00-41.00.

### Indianapolis Auction

**INDIANAPOLIS HOGS:** 1500.

Barrows and gilts moderately active, steady to 25 higher.

**BARROWS AND GILTS:** US 1-2 200-240 lb. 41.75-42.00, one lot 42.00; US 1-3 200-260 lb. 41.00-41.75. Including most 200-240 lb. early 41.50-41.75.

### New Holland Auction

January 13, 1975

**HOGS** 1345: Compared with last Monday's market. Barrows & Gilts fully 75c higher. US No. 1-2 200-235 lbs. 42.25-43.25, No. 1-3 200-245 lbs. 41.75-42.25, No. 2-3 225-270 lbs. 40.50-41.75, No. 2-4 170-195 lbs. 38.00-41.75. US No. 1-3 300-575 lbs. sows 30.00-35.00. Boars: 26.75-36.00.

### Leb. Valley Auction

**HOGS** 371. Barrows & Gilts 75c to \$1.50 lower. US No. 1-3 195-230 lbs. barrows & gilts 40.50-40.85, couple lots 41.40, No. 2-3 200-250 lbs. 39.60-40.60. US No. 1-3 300-475 lbs. sows 31.00-34.50. Few Boars 22.00-22.75.

**FEEDER PIGS** 30. One lot US No. 1-3 35 lbs. feeder pigs 19.00 per head, one lot No. 1-3 80 lbs. 26.00 per head.

### Lancaster Auction

**HOGS:** Barrows and gilts 50-75 lower.

**BARROWS AND GILTS:** US 1-3 190-250 lb. 41.35-41.85; One small lot US 1 42.25; US 2-3 240-270 lb. 40.75-41.25.

### Peoria Cattle

January 16, 1975

**CATTLE:** Receipts this week 5900, compared to last week 5820, and to a year ago 5524. Compared with last weeks close slaughter steers 50-1.00 lower. Slaughter Heifers 75-1.00 lower. Cows steady to strong. Bulls steady. Receipts about 75 pct. Slaughter Steers, 15 pct. slaughter Heifers and the balance Cows.

**SLAUGHTER STEERS:** Choice and Prime 1150-1350 lbs. yield grade 3-4, Monday 37.50-38.00. Choice 950-1275 lbs. yield grade 2-4, 36.50-38.25; late 36.50-37.75; early load high Choice 1240 lbs. yield grade 3-4, 35.00. Mixed Good and Choice 900-1300 lbs. 35.00-36.50. Good 33.00-35.00. Standard and Good Holsteins 28.50-32.50; part load Good early 33.50.

**SLAUGHTER HEIFERS:** Choice and Prime 900-1050 lbs. yield grade 3-4, 37.50-38.00; closed 37.00-37.50. Choice 800-1075 lbs. yield grade 2-4, 35.00-37.00. Mixed

## Futures Trading

(Closing bids as of Thursday, January 16)

	Chicago Cattle	Chicago Hogs	New York Maine Potatoes	Chicago Fresh Eggs
January				53.40
February	35.75			49.75
March			3.20	51.55
April	36.40	38.20	3.37	47.70
May			3.75	49.00
June	37.25	41.30		
July		42.75		
August	37.60	41.70		
September				
October	37.70	41.40		
November			4.55	
December	38.40	42.00		

Trend — Cattle are Lower, Hogs are Lower, Potatoes are Lower and Eggs are Lower.

Markets Provided by Commodity Department  
Reynolds Securities, Inc.

## Chicago Grain Futures

(Closing bids as of Thursday, January 16)

	Corn	Wheat	Soybeans	Soybean Meal
January			6.21	122.00
March	3.30 3/4	4.04	6.33 3/4	130.25
May	3.32 3/4	3.99 3/4	6.44 1/2	136.75
July	3.31 1/2	3.88 1/2	6.50 1/2	142.25
September	3.13 1/2	3.96	6.22 1/2	144.00
October				
November			6.14	
December	2.84 1/2	4.06		149.00

Trend — Corn is Lower, Wheat is Lower, Soybeans are Lower and Soybean Meal is Lower.

Markets Provided by Commodity Department  
Reynolds Securities, Inc.

Good and Choice 750-1100 lbs. 33.00-35.00. Good 30.00-33.50. Standard and Good 27.00-30.00.

**BULLS:** Yield Grade 1-2 1100-1600 lbs. 21.00-25.00; Commercial 14.50-17.50. Individual yield grade 1, High dressing Utility 18.00. 28.00.

## U. S. Inspected Livestock Slaughter

Estimated Daily Livestock Slaughter Under Federal Inspections

	CATTLE	HOGS	SHEEP
Week to Date	518,000	1,081,000	122,000
Same Period Last Week	546,000	1,251,000	125,000
Same Period Last Year	482,000	1,213,000	125,000



### BLACK and WHITE HOLSTEIN FARM

2220 DAIRY ROAD  
LANCASTER, PENNA

Just Arrived — 2 Loads of New Faces.

The Quality Cows That Satisfy Customers

NEXT SALE FEB. 21st

DEALERS IN TOP GRADE DAIRY COWS  
Dairy Cattle Auction Sale 3rd Friday Night Every Month

CHARLES C. MYERS, Owner Phone 717-569 2106  
717-569 6800

Park Myers, Sales Mgr

Private Sales Daily

Use the Farm Calendar  
To Publicize Your Meetings.



## FOR BETTER NET RETURNS SHIP TO THE DANVILLE LIVESTOCK MARKET

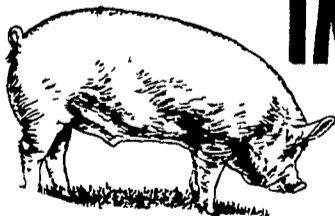
Old Rt. 11 Danville, Pa.  
Phone (717) 275-2880

SALE EVERY MONDAY 2 P.M.

OWNERS

Charles C. Myers  
(717) 569-2106

Melvin M. Lehman  
(717) 964-3621



## IMPORTANT NOTICE LET US HANDLE YOUR FEEDER PIGS



## NEXT FEEDER PIG SALE TUES., JAN. 21

Feeder pigs consigned to Walter M Dunlap and Sons must arrive at the stockyards between 7 A.M. and 11 A.M. the day of the sale. Upon arrival they will be inspected by a veterinarian, tagged, and state graded.

The two sales scheduled for January will be held on Tuesday, the 7th, and Tuesday, the 21st, starting at 1 P.M. Consignors wishing to tag their pigs on the farm can get the tags at the state office at the stockyards, not later than 4 P.M. any day preceding the sale, thereby saving 25 cents per pig.

Consign all your feeder pigs to Walter M Dunlap & Sons where they will be handled by a capable and experienced staff, and for further information call 717-397-5136

## WALTER M. DUNLAP & SONS

Capable Service To The Livestock Industry Since 1898