

DHIA MONTHLY REPORT Chester Co.

[Continued from Page 76]

89	GH	6-3	305	19,666	3.7	727
95	GH	6-3	305	19,137	3.5	670
Nathan King						
Chief	RH	5-1	305	25,463	3.1	798
Judy	RH	8-0	305	20,049	3.6	730
J. Elmer Lapp						
Betsy	RH	6-7	305	18,415	4.3	784
Carol	RH	4-0	297	17,104	4.3	736
Norma	RH	4-3	297	17,367	3.8	656
Walmoore						
319	RH	6-2	305	19,954	3.9	778
332	GH	6-2	305	18,528	3.9	722
344	RH	6-5	300	17,807	4.0	716
282	RH	5-5	305	18,346	3.5	651
42	GH	8-4	305	17,266	3.8	648
William E. Parry						
471	GH	4-0	305	19,040	4.1	777
24	GH	305	20,603	3.7	755	
120	GH	8-2	305	21,842	3.4	746
506	GH	5-1	305	19,068	3.6	694
526	GH	5-3	298	15,581	4.3	674
135	GH	4-2	305	18,723	3.4	639
H & R Mason						
20 D	RH	5-4	305	20,789	3.7	772
29 E	RH	5-1	305	19,180	3.4	652
62 C	RH	5-4	305	16,367	3.8	630
Stephen L. Stoltzfus						
Evie	RH	4-6	305	21,399	3.5	754
Henry S. King						
Linda	RH	7-5	305	18,494	4.1	753
Buttonwood Farms						
Angelo	RBS	4-4	305	18,010	4.2	751
Paula	RBS	6-5	305	16,461	4.3	707
Earl W. Miller						
47	GH	4-2	305	15,975	4.7	751
Willowland Farm						
Herta	RH	4-4	305	18,988	3.9	746
Haven	RH	3-0	305	16,067	3.8	610
Paul H. Eby						
Sally 2	RH	6-4	305	20,048	3.7	743
Lloyd Kreider						

Pat	RH	6-1	305	22,281	3.3	738
Sparkle	RH	3-2	305	14,235	4.9	691
Dottie	RH	2-2	303	15,773	3.8	602
Ben S. Beller						
Jen	RH	4-4	305	21,121	3.5	734
Paul W. Given						
Dolly	GH	10-3	290	17,253	4.3	734
Sparky	GH	4-3	287	15,773	3.8	600
Daniel S. Stoltzfus						
Queen	GH	6-3	302	17,846	4.1	733
Cindy	GH	3-1	291	15,129	4.0	612
E. Richard Hoopes						
85	RH	6-11	305	18,026	4.0	730
79	GH	6-3	305	18,114	3.7	670
72	GH	4-9	292	16,608	3.7	610
Llanduey Farm						
Ace	GH	6-2	305	23,070	3.1	723
Deuce	GH	7-2	305	21,944	3.2	694
Nora	GH	5-2	290	18,163	3.5	628
Lenape Dairy Farm						
565	RH	4-4	305	18,906	3.8	720
Y 20	RH	3-11	305	19,848	3.6	708
462	RH	5-5	305	18,270	3.7	682
448	RH	5-7	305	18,700	3.5	651
292	RH	8-0	305	16,832	3.8	632
593	RH	4-0	305	17,804	3.5	622
459	RH	5-4	305	16,216	3.7	607
X 27	RH	6-0	289	15,614	3.9	607
555	RH	4-4	305	15,641	3.9	604
Samuel B. Acker						
211	RH	6-0	305	13,957	5.2	719
296	RH	5-4	287	14,700	4.7	693
255	RH	4-3	305	17,263	3.9	676
298	RH	3-11	305	16,414	4.1	670
R 79	RH	12-1	305	14,689	4.4	647
R 197	RH	7-3	305	16,322	3.9	633
R 102	RH	8-2	299	16,741	3.7	627
B 10	GH	3-1	305	15,261	4.0	610
George P. Lamborn						
Speedy	RH	3-5	305	18,196	3.9	716
Tabby	RH	5-3	305	17,630	3.6	639
Donald L. Shoemaker						
Shirley	RH	10-3	305	17,515	4.1	712
John E. Bruner						
86	RH	3-4	305	17,253	4.1	705
24	RH	5-2	305	15,999	3.9	630
Floyd Miller						
72	GH	4-3	305	16,992	4.1	703
17	GH	4-8	305	17,292	4.0	697
19	GH	6-5	300	17,369	3.6	633
Kauffman Bros.						
Ann	RH	4-2	305	18,060	3.9	701
Marlene	RH	6-4	286	17,021	4.0	686
David Bartram						
54	GH	6-1	305	15,994	4.4	699
99	GH	4-2	305	16,521	3.6	601
Earl Mast						

Lancaster Farming, Saturday, Jan. 4, 1975—77

Jean	RH	6-3	282	17,148	4.1	698
Arthur D. Hershey						
Dawn	RH	10-2	305	16,952	4.1	696
Martha	RH	5-5	305	16,281	4.2	687
Walmoore No. 3						
481	RH	4-4	305	18,959	3.7	694
C 13	GH	7-2	305	17,860	3.4	615
R 28	GH	3-2	305	13,258	4.6	604
Robert E. Pepple						
248	RH	5-0	305	16,752	4.1	694
212	RH	4-11	294	15,984	4.0	636
Elam Petersheim						
Delpha	RH	7-4	305	19,111	3.6	691
Mamie	RH	6-3	294	16,864	3.6	608
Milton & Joyce Edwards						
62	GH	6-0	305	16,811	4.1	691
Hogg & Hershey						
Ruby	GH	5-4	305	16,091	4.3	690
Horn	GH	4-4	303	18,718	3.3	616
Dividend	RH	4-4	305	17,450	3.5	605
Ben O. Stoltzfus						
32	GH	4-1	305	16,657	4.1	685
33	GH	305	16,011	4.0	633	
62	GH	5-2	305	16,182	3.8	607
Louis C. Neyman						
31	GH	7-9	305	16,851	4.0	682
Bryncoed Farms						
M 56	RH	4-2	305	17,365	3.9	681
P 414	RH	4-2	305	16,632	3.8	627
O 92	RH	3-0	305	17,630	3.5	616
188	RH	6-5	305	14,872	4.1	608
N 5	RH	4-0	305	14,757	4.1	606
Harold R. Kulp						
Mildred	GH	7-6	305	16,880	4.0	680
Riva	GH	3-2	305	17,007	3.9	670
Roxie	GH	3-4	305	17,303	3.8	666
Plum	GH	4-4	305	17,343	3.8	652
Rava	GH	3-2	305	16,645	3.8	635
Richard Proud						
129	RH	3-4	298	16,212	4.2	679
Tom Halladay & Son						
Fizz	RH	5-5	305	16,212	4.2	675
Jonas E. Stoltzfus						
Lass	RH	6-9	305	18,748	3.6	674
Bailey & L. Shoemaker						
10	GH	6-1	305	17,096	3.9	660
71	GH	8-3	305	15,286	4.1	622
48	GH	5-8	305	14,538	4.3	622
46	GH	4-8	305	13,271	4.6	606
Donald Hostetter, Jr.						
Bt	GH	10-8	305	18,826	3.5	664
Wilma	GH	6-2	305	18,186	3.3	636
Horns	GH	11-6	305	18,423	3.3	614
Joseph S. King						
Harriet	GH	7-2	305	16,258	4.1	664

[Continued on Page 78]

TWO 100-TON BULLS

WE HAVE THE TWO HIGHEST PD BULLS IN CANADA

ROYBROOK STARLITE is now +16 & +1 overall on type (Canadian)!

EDGEWARE COMMANDER RAY is +15.4 & +2 overall on type (\$126, Canadian)!

(+4 Mammary System, +4 Fore Udder, +1 Rear Udder)

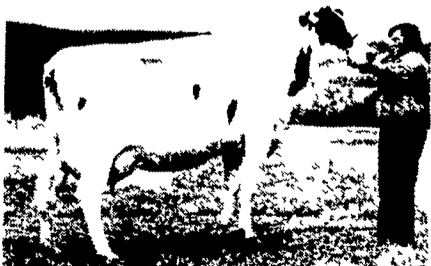


EDGEWARE COMMANDER RAY
Very Good Superior Production Sire
Born: Jan. 3, 1965
147 Daus. Avg.: M132 - F124% of BCA
Sire: Roybrook Reward EX & Class Extra
Dam: Edgware Wayne Rae
To date, 12 Lacts 259,482M - 9,574F - 3.69%

In addition to longevity and type, the production of Commander Ray's daughters is outstanding. Using the conversion factor of 120 lbs., his projected US proof is +1848 lbs. Milk. The conversion factor of 120 lbs. has been shown to be accurate as seen in Roybrook Starlite's proof. Starlite's actual USDA-DHIA proof (5/74) was +1708 (\$132) making ROYBROOK STARLITE the HIGHEST PD BULL for \$ in North America. At that time his Canadian proof was +14. The conversion of Canadian to US figures for Starlite's proof is slightly lower than the actual US proof. Starlite's US proof is expected to increase, corresponding with his Canadian proof. Roybrook Starlite is presently not available.

Also, Commander Ray's dam, granddam and great-granddam are all 100-TON COWS.

DAUGHTERS OF COMMANDER RAY



CHESNUT HILL GAIL LADY (VG)
3y 337d 21,027M 864F 4.11%
4y 305d 22,473M 870F 3.87%
M-198 F-209% of BCA



THERINDALE LADY (GP)
5y 305d 21,839M 743F 3.40%
M-184 F-171% of BCA



NASHWAAK HEIDI RAY (GP)
2y 305d 17,953M 642F 3.58%
M-168 F-163% of BCA



A GENETIC IMPROVER COMPANY

AARON STOLTZFUS

RD1, Box 277
Gap, PA 17527
Phone (717) 442-4074

24 HR. ANSWERING SERVICE
[215] 593-2379