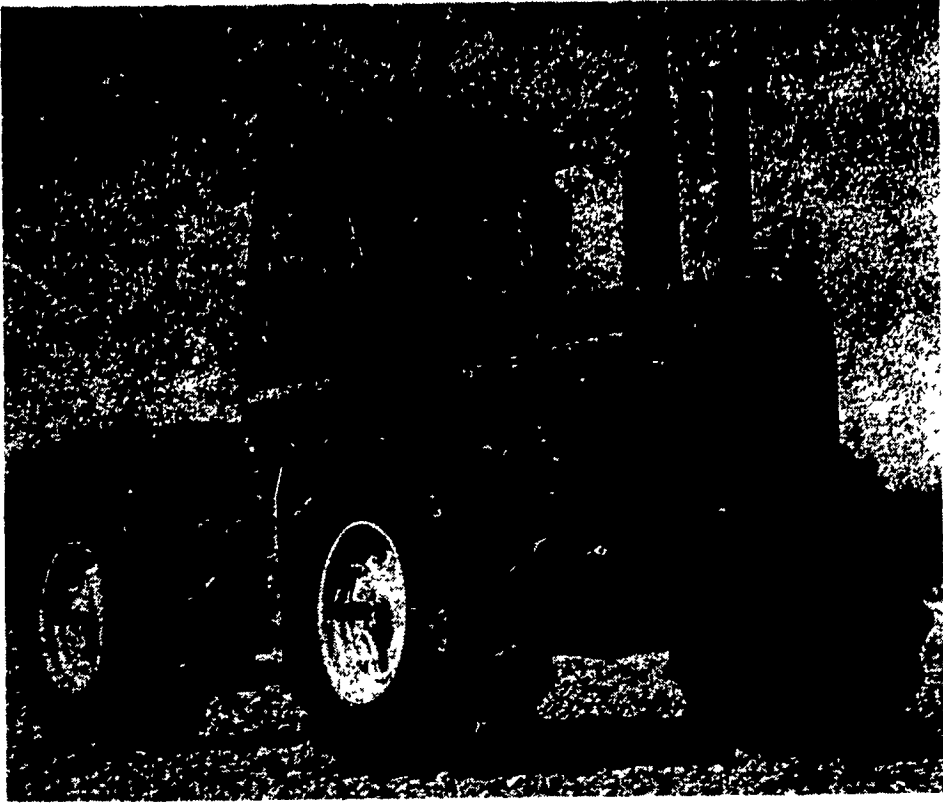


# SEE WHAT'S NEW FOR 1975 from JOHN DEERE



## 8430 and 8630 Four-Wheel Drive Tractors

8430 - 466 cubic inch turbocharged and intercooled John Deere diesel engine.

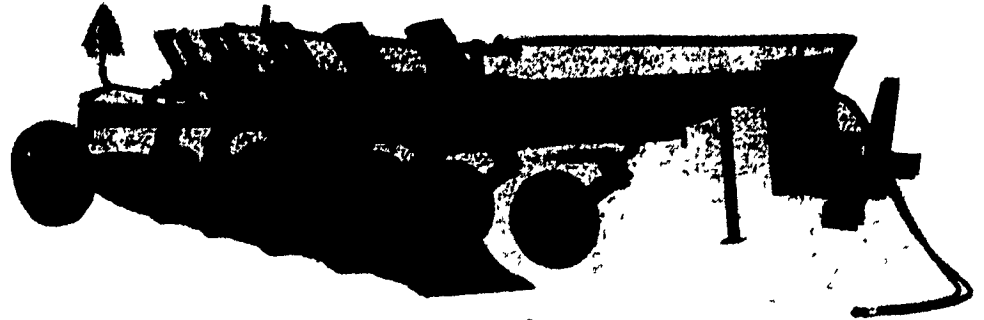
- Provides \*215 engine horsepower and \*175 PTO horsepower (\*factory observed)

8630 - 619 cubic inch turbocharged and intercooled John Deere diesel engine.

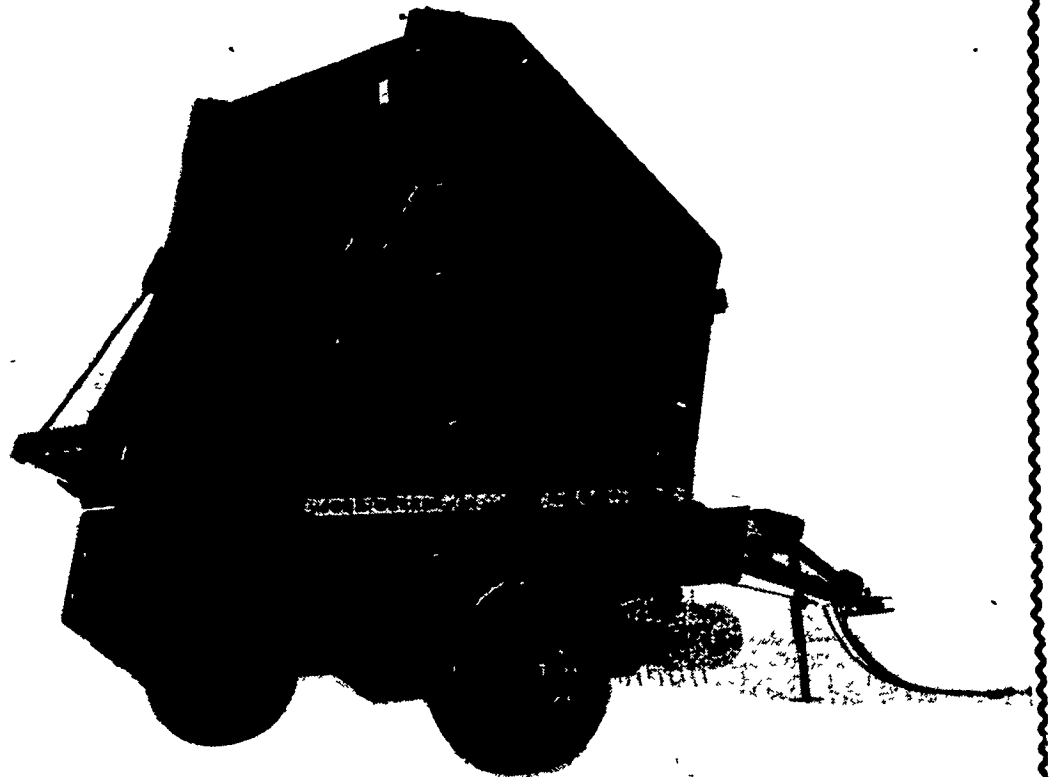
- Provides \*275 engine horsepower and \*225 PTO horsepower (\*factory observed)

### New Sound-Gard Body

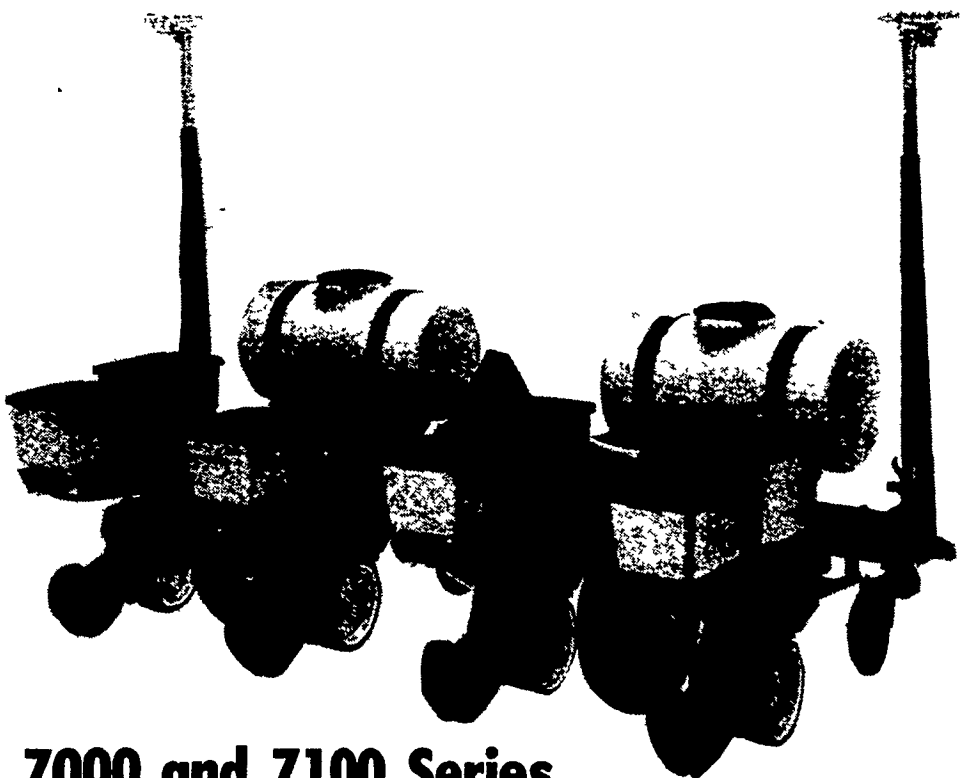
- Unequaled operator comfort, convenience and "quiet."



## Spring-Reset Model For 2500 Series Semi-Integral Plow



## 500 Round Baler



## 7000 and 7100 Series Max-Emerge Planters



## 100 Stack Wagon

**M. S. YEARSLEY & SONS**  
West Chester 696-2990

**A. B. C. GROFF, INC.**  
New Holland 354-4191

**LANDIS BROS. INC.**  
Lancaster 393-3906

## ADAMSTOWN EQUIPMENT INC.

Mohnton, RD2, Pa. 19540 (near Adamstown)  
Phone (215) 484-4391

**SEE THE JOHN DEERE DISPLAY AT THE FARM SHOW**

