

Peoria Cattle

January 2

Weekly Summary.
CATTLE: Receipts this week: 3300; last week: 3100; year ago: 4600.

Compared with last week's close, slaughter steers 50-75 lower. Slaughter heifers steady to weak. Cows strong to 50 higher. Bulls steady. Receipts about 75 percent slaughter steers 15 percent slaughter heifers, balance mainly cows.

SLAUGHTER STEERS: Choice and Prime 1150-1250 lbs. yield grade 3-4 37.00-37.75; Choice 950-1330 lbs. yield grade 2-4 36.25-37.50; load 1185 lbs. 37.75 and part-load 38.00; Mixed Good and Choice 900-1300 lbs. 35.00-36.50; Good 32.50-35.00; few Standard and Good Holsteins 31.40-32.50.

SLAUGHTER HEIFERS: Load Choice and Prime 950 lbs. yield grade 3-4 37.00; part-load 37.50; Choice 850-1050 lbs. yield grade 2-4 35.00-36.50; Mixed Good and Choice 750-1100 lbs. 32.50-35.00; Good 30.00-32.50.

COWS: Utility and Commercial 16.50-19.50; high-dressing Utility 20.00; few 21.00; Cutter 14.50-18.00; Canner 11.00-14.50.

BULLS: Yield grade 1-2 1100-1700 lbs. 21.00-25.00; individual yield grade 1 27.00.

Omaha Cattle

Weekly 51 Cattle.

Compared with last week's close: slaughter steers closed 25-75c lower, heifers 25-50c lower. Cows closed steady to 50c lower, decline occurred late on expanded receipts. Bulls steady.

Receipts for three market days, little changed from Christmas week at 12,300 but compares with 18,800 a year ago. Slaughter steers approximately 40 percent, heifers 30 percent and cows fully 22 percent. Price declines for steers and heifers occurred early on fairly large run. Although packers came into the week with very little inventory of cattle, most were cautious in view of depressed dressed beef trade. Much of steer and heifer supply Good to Average-Choice, many carried moderate amount of mud and wet snow late.

STEERS: Two loads Choice, end or prime, 980-1171 lbs. yield grade 3, few 4, 37.85-38.00. Choice yield grade 2-4 975-1250 lbs. 36.50-37.50, many 36.75-37.50, some early 37.75; 1200-1325 lbs. 36.00-37.25. Few loads Choice and Prime yield grade 4-5 1400-1502 lbs. 33.00-36.25. Mixed Good and Choice 950-1200 lbs. 35.75-36.50. Good 31.50-36.00. Mixed standard and low-Good 29.50-31.00.

Average cost slaughter steers for two days 35.99 average weight 1,113 lbs. as compared 36.76 and 1,130 lbs. last week and 42.52 and 1,168 lbs. a year ago.

HEIFERS: Load Choice and Prime yield grade 3-4 980 lbs. early 37.50. Choice yield grade 2-4 875-1100 lbs. 36.00-36.75, some 37.00 early with end of Prime. Load Choice and Prime 1080 lbs. yield grade 4-5 34.50. Mixed Good and Choice 34.75-35.75. Good 31.50-35.00.

COWS: Utility and Commercial closed 16.00-18.00, some lots 18.50. Canner and Cutter 12.00-16.50, Mixed Cutter and Low-Utility 16.00-17.00. Low dressing canner 10.00-12.00.

HOG PRICES

Lancaster Market

HOGS: Barrows and gilts 50-1.50 lower.
BARROWS AND GILTS: US 1 200-240 lb. 43.25-43.50; US 1-2 200-240 lb. 41.75-42.50; US 2-3 190-260 lb. 41.25-42.00.

Vintage Auction

December 28, 1974

Hogs: 693.
 Compared to last week boars and gilts 75 cents to 1.50 higher. US 1-2 200-235 lbs. 43.50-44.00; 1-3 200-250 lbs. 42.25-43.25; 2-4 170 lbs. 36.00-38.00; Sows US 1-3 310-510 lbs. 34.00-38.00 boars few to 23.75-27.50.

January 1, 1975
 No market report available at press time.

St. Louis Auction

ST. LOUIS HOGS: 6000.
 Barrows and gilts steady to 50 lower.
BARROWS AND GILTS: US 1-3 200-240 lb. 40.00-40.25, Around 150 head 40.50.

Philadelphia Produce

Tuesday, December 31

APPLES
 Ctn Tray Pack: NJ Red Delicious no grade mark 125s 6.00.

PENNA Red Delicious us Combination Ex Fcy & Fcy 100-113s 6.50 no grade mark 56-100s 6.50.

VA Redk Delicious US Combination Ex Fcy & Fcy 88-113s 7.00.

Ctn Cell Park - McIntosh. NY US Fcy 100-120s few best 7.50 fair cond 5-5.50.

MAINE US Combination Ex Fcy & Fcy 120s 7.00.

Ctn Film Bag 12-3 lb US No. 1 or Better 2 1/4" & Up.

PENNA Red Delicious 5.25-5.40 Stayman 4.80.

NJ Red Delicious 5.40 fair appear 4.50.

NY Winesaps 4.80.

1 1/2 Cu Ctn: NJ no grade mark Red

BULLS: Yield grade 1-2 1400-1800 lbs. 21.00-23.00, few individuals yield grade 1 24.00-25.00.

Peoria Auction

PEORIA HOGS: 3500.
 Barrows and gilts opening steady to 25 lower.
BARROWS AND GILTS: US 1-2 200-240 lb. 40.00-40.50; US 1-3 200-250 lb. 39.00-40.00.

Indianapolis Auction

INDIANAPOLIS HOGS: 2000.

Barrows and gilts moderately active, rather uneven, early sales generally steady.

BARROWS AND GILTS: US 1-2 200-240 lb. 40.25-40.50; 46 head 40.75-40.85; US 1-3 200-250 lb. 40.00-40.50.

New Holland Auction

Hogs: 1287.
 Compared with last week, boars and gilts 1.25-1.50 lower. US 1-2 200-240 lbs. 42.50-43.60; 1-3 200-250 lbs. 41.25-42.50; 2-3 230-270 lbs. 38.50-41.25; 2-4 170-190 lbs. 38.00-41.25; Sows - US 1-3 300-550 29.00-34.00; 2-3 390-600 lbs. 27.00-30.00; boars 25.75-38.00.

Futures Trading

(Closing bids as of Thursday, January 2)

	Chicago Cattle	Chicago Hogs	New York Maine Potatoes	Chicago Fresh Eggs
January				52.15
February	39.35	42.40		52.40
March			3.37	55.30
April	40.45	42.40	3.69	51.50
May			4.18	51.70
June	41.20	45.30		52.00
July		45.90		
August	41.20	44.85		
September				
October	40.82	44.10		
November			4.36	
December	41.15	45.05		

Trend — Cattle are Steady, Hogs are Stronger, Potatoes are Weaker and Eggs are Weaker.

Markets Provided by Commodity Department
 Reynolds Securities, Inc.

Chicago Grain Futures

(Closing bids as of Thursday, January 2)

	Corn	Wheat	Soybeans	Soybean Meal
January			7.07	140.00
March	3.47	4.58	7.24	149.00
May	3.48 3/4	4.56 1/2	7.37	155.50
July	3.47	4.24	7.43	162.50
September	3.24	4.31	7.40	164.00
October				164.00
November			6.91	
December	2.94	4.38		164.00

Trend — Corn is Stronger, Wheat is Steady, Soybeans are Stronger and Soybean Meal is Stronger.

Markets Provided by Commodity Department
 Reynolds Securities, Inc.

POTATOES

50-lb sks US No. 1 Size A wshd unless otherwise stated.

Round Whites: MAINE 2.10-2.25 mostly 2.15-2.25.

LI 2.10-2.25 mostly 2.15-2.25 few 2.30.

PENNA unwshd 1.75-2.00.

Round Reds: NY 3.00.

RADISHES

STEADY

FLA ctn 30-6 oz film bag Red 2.25-2.50 one label 2.75 few higher.

RUTABAGAS

CANADA 50-lb sks & ctn CD No. 1 waxed 3.50-4.00 mostly 3.75-4.00.

SPINACH

TEXAS bu bkt Savoy Type 4-4.50.

SQUASH

DULL

FLA 5-9 bu crt & ctn Zucchini med 4.00 Others Too Few Sales To Quote.

STRAWBERRIES

No offerings.

SWEET POTATOES

NJ no grade mark 1/2 bu hmp Open Face Yellow

Jersey 3.50-3.75 sml-med 2.25-2.50.

TURNIPS

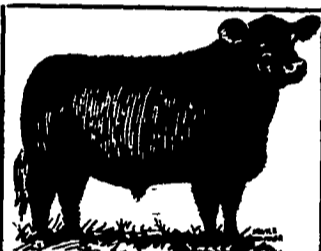
OFFERINGS LIGHT NJ bu bkt White-Topped & washed 5.00.

New Holland Horse Auction

Monday, December 30

Reported receipts of 251 head of horses, mules and ponies. Market stronger.

Local work horses 290-400; mules 125-175; driving horses 140-260; riding horses 150-230; better horses 245-430; lightweight killers 12-16; heavyweight killers 18-20; mare ponies 10-25; colts 5-10; geldings 10-20 and larger ponies 40-65.



DANVILLE LIVESTOCK MARKET

Old RT. 11
 Danville, Pa.
 Phone (717) 275-2880

SALE EVERY MONDAY 2 P.M.

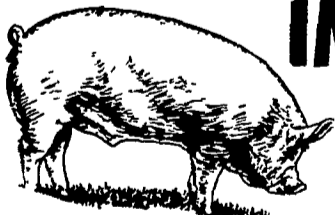
We would be happy to have you as a Customer . . .

S. K. SHOTZBERGER, INC.

LIVESTOCK TRANSPORTATION

Gene Zwally, President
 Marvin Johns, Secy-Treasurer

P.O. Box 925, Lancaster, Pa. 17604
 Phone: 393-4641 (day or night)



IMPORTANT NOTICE

LET US HANDLE YOUR FEEDER PIGS

NEXT FEEDER PIG SALE TUES., JAN. 7

Feeder pigs consigned to Walter M. Dunlap and Sons must arrive at the stockyards between 7 A.M. and 11 A.M. the day of the sale. Upon arrival they will be inspected by a veterinarian, tagged, and state graded.

The two sales scheduled for January will be held on Tuesday, the 7th, and Tuesday, the 21st, starting at 1 P.M. Consignors wishing to tag their pigs on the farm can get the tags at the state office at the stockyards, not later than 4 P.M. any day preceding the sale, thereby saving 25 cents per pig.

Consign all your feeder pigs to Walter M. Dunlap & Sons where they will be handled by a capable and experienced staff, and for further information call 717-397-5136.

WALTER M. DUNLAP & SONS
 Capable Service To The Livestock Industry Since 1898



U. S. Inspected Livestock Slaughter

Estimated Daily Livestock Slaughter Under Federal Inspections

	CATTLE	HOGS	SHEEP
Week to Date	391,000	736,000	84,000
Same Period Last Week	359,000	720,000	84,000
Same Period Last Year	340,000	872,000	94,000

TRY A CLASSIFIED AD