

Penn's Woods Camper

THE VOICE OF PENNSYLVANIA CAMPING

Low Cost Camping In Pennsylvania

The following explanation of camping expenses in Pennsylvania is based on an actual trip made from Harrisburg. The trip was west from Harrisburg on the Pennsylvania Turnpike to Somerset, west on Rt. 70 to Washington, Pa., north around Pittsburgh thru New Castle, Mercer, Meadville, east into Allegheny National Forest, across northern Pennsylvania via the scenic Rt. 6 and south along the

Susquehanna River back to Harrisburg.

The trip involved nine days of travel and eight nights of camping, each night in a different campground.

Site fees for the eight nights were as follows: \$4.00, \$3.75, \$4.75, \$5.50, \$4.00, \$4.75, \$3.75, \$4.00. These fees were for a site with an electrical hook-up. The camp grounds ranged from 15 sites with only drop cords for electric, to major resort camp-

grounds with entertainment and swimming pools. The average fee for one night of camping was \$4.31.

The mileage totaled 1,006 miles with about 85 percent of it towing a 17 ft. travel trailer. The trip used 94.5 gallons of gasoline (regular) at prices ranging from 53.9 cents per gallon to 59.9 cents per gallon. Total cost for gasoline was \$51.75 plus one quart of oil at 80 cents for a total of \$52.55. The cost per mile for gasoline and oil was

5.22 cents per mile.

Now for the cost of using the trailer. It was a light-weight low cost trailer which will no doubt depreciate about \$200.00 this year. As close as can be figured the family will be using the trailer not less than 26 nights this camping season which means that the trailer will cost \$7.69 for each night use.

With the difference in the gasoline mileage between just driving the car and the gasoline needed for the car and trailer amounted to 31.7 additional gallons at an average cost of 54.8 cents per gallon.

The additional road cost for pulling the trailer was \$17.37.

The daily camping and travel costs broke down as follows.

Camp site \$4.31
Trailer use cost \$7.69

Gasoline and Oil \$8.56
Total costs \$18.76

If the trip would have been made without the trailer the daily cost for fuel would have been \$4.39.

This means that the actual cost for camping with the travel trailer and site fees would adjust to a daily cost

of \$16.59 for two adults and three children.

This is quite a difference from the approx. \$58.00 a day for a family of two traveling 300 miles a day without an RV, shown in a recent touring study.

J. R. Barley

Agri-Culture?

HOW'S YOUR?

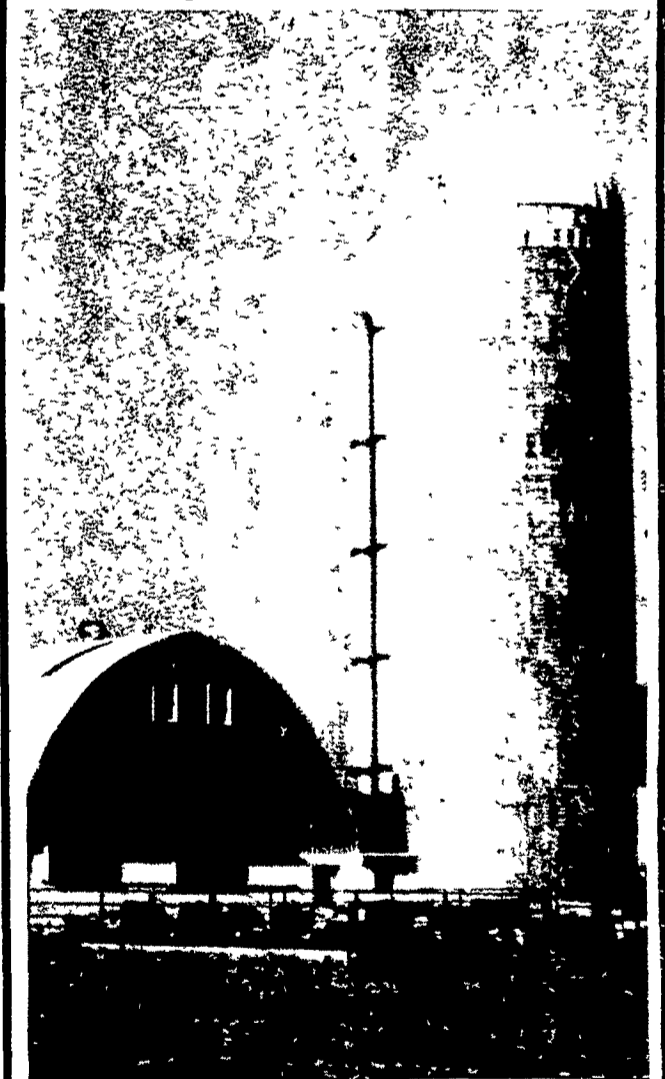
ONE-FOURTH OF THE AVERAGE WEEKLY GROCERY BILL COMES FROM PURCHASES OF NON-FOOD ITEMS!

ABOUT 90% OF ALL PET FOOD AND ABOUT 50% OF ALL TOOTH-PASTE, ASPIRIN, AND HAIRSPRAY SOLD IN U.S. IS SOLD AT GROCERY STORES...



AND IN ONE RECENT YEAR, CONSUMERS SPENT MORE AT GROCERIES ON BEER, CIGARETTES, AND PET FOOD COMBINED THAN ON FRESH BEEF!

TERRE HILL SILOS TRI-RIB CONCRETE STAVE SILOS



More Quality More Strength More Economy

Silos
Silo Unloaders

Bunk Feeders
Liquid Manure Tanks

SEE US AT THE FARM SHOW BOOTH 280-281
TERRE HILL SILO CO., INC.

Terre Hill, Pa. 17581

Phone 215-445-6736

Quality & Service Since 1927

COMPARE DARI-KOOL BULK MILK COOLERS & SAVE \$



FACTORY RECONDITIONED

BULK TANKS

- New 5-year warranty on all tanks and compressors
- New compressors and tank washers on all units

Mr. Dairyman:

Are you looking for a real buy on a factory reworked, direct expansion bulk milk tank? DARI-KOOL has just what you're looking for at prices you can't beat!

We will buy or trade nice, clean bulk milk tanks.

	List	Cost
DKE 2000 gal. (2-5 hp. compressors)	\$13,510	\$8,246
DKE 1500 gal. (2-4 hp. compressors)	\$10,755	\$6,548
DKE 1250 gal. (2-3 hp. compressors)	\$ 9,570	\$5,860
DKE 1000 gal. (2-3 hp. compressors)	\$ 8,280	\$5,086
DKE 800 gal. (1-5 hp. compressor)	\$ 6,620	\$4,116
DKE 600 gal. (1-4 hp. compressor)	\$ 5,618	\$3,445
DKE 450 gal. (1-3 hp. compressor)	\$ 4,960	\$2,978

PRESENT THIS COUPON

AT FARM SHOW BOOTH
NO. 478-480 FOR ADDITIONAL

2% DISCOUNT

ASK FOR DETAILS

FOR BULK MILK TANK SERVICE
CALL COLLECT

Call Us At (717) 626-4355, (717) 626-5996
or Answering Service At (717) 733-1224.

SHENK'S FARM SERVICE

R.D.4 Lititz, Pa.

Ph. 626-4355

CASH IN ON EARLY BIRD SPECIAL

On Lawn & Garden Equipment Tune Up & Service Special

Take this coupon & your lawn mower, chain saw, tiller or Lawn & Garden tractor to John L. Stauffer Repair Service for a \$3.00 deduction on your bill. ONE PER UNIT L.F.

OFFER ENDS FEB 28, 1975

John L. Stauffer

REPAIR SERVICE

1/2 mile N. of Goodville on Union Grove Rd
Phone: 445-6175

LARRY WANTS TO START THE NEW YEAR OUT RIGHT,



So come on in and get your best deal on a new or used tractor - from 7 h.p. to 130 h.p. No matter what you need, why not see Larry at The Home of the Friendly Folks.

SEE THE FORD DISPLAY AT THE
PA. FARM SHOW BOOTH
NOS. 68-77 & 78-87



LANCASTER FORD TRACTOR, INC.

Take Flory Mill Exit off 283 and go
1/4 mile toward East Petersburg.

THE NEW HOME OF THE FRIENDLY PEOPLE
1655 Rohrerstown Road
Lancaster, Pa. Phone (717) 569-7063