



Farm Show director Wellington Smith was in his office last week wrapping up final details for the 59th

Annual Pennsylvania Farm Show, the biggest agricultural exhibit in the Northeast.

## Have Your \$ Ready

[Continued from Page 1] The fee was made, Smith said on overtime expenditures, they conducted a survey of reduced our coal use and state and county fairs trimmed back on electricity. around the country, and Our costs went up anyway discovered the vast majority because of inflation " charging from 5-cents to Before the decision to levy \$2.00 for admission and-or

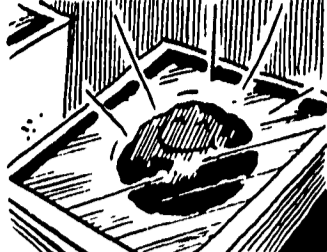
parking. In addition to the parking fee, Smith said his staff is reviewing the rentals charged to groups who use the Farm Show building throughout the year.

And then, of course, there's the \$11 million just appropriated by the state legislature for renovation and repairs. "That money will be spent to bring the buildings into line with the fire and panic codes," Smith noted. "There's really nothing there for expansion. The exits aren't right, the wiring's going bad. The officials don't like our doors."

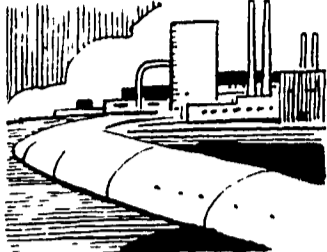
"The roof is two-inch wooden planks, and it's been on for 24 years. It's leaky and has to be replaced before we put in a lot of new wiring. And the old metal building in the rear has to be completely torn down and rebuilt."

A move to build a new Farm Show complex, to be named the Keystone Exposition Center, is still not dead, and we asked Smith if the legislature's appropriation of repair money for the old buildings would have any affect on the

### SOLUTION TO THE 'ENERGY CRISIS?'



IN KENTUCKY'S EASTERN HILLS AND WESTERN ROLLING PLAINS LIES ENOUGH COAL TO SOLVE THE ENERGY NEEDS OF THE ENTIRE UNITED STATES UP TO THE YEAR 2025!



ANTICIPATING THE U.S. ENERGY CRISIS, KENTUCKY, THE NUMBER ONE COAL-PRODUCING STATE, PIONEERED IN EARLY 1972 A RESEARCH AND DEVELOPMENT PROGRAM TO TRANSFORM MUCH OF THIS COAL INTO CLEAN OIL AND NATURAL GAS.



NOW KENTUCKY'S GOVERNOR WENDELL H. FORD HAS PROPOSED A JOINT STATE, FEDERAL, GOVERNMENT AND PRIVATE INDUSTRY PLAN TO BUILD COMMERCIAL COAL CONVERTING PLANTS IN KENTUCKY BY 1980 AS WELL AS A NATIONAL COAL RESEARCH CENTER. THIS SAYS GOVERNOR FORD, COULD PROVIDE THE SOLUTION TO AMERICA'S ENERGY CRISIS.

TRY A CLASSIFIED AD!

prospects for a new complex. "You can't ever predict what the legislature is going to do, but I don't think they'll forget about a Keystone Expo just because we're fixing up the old buildings."

"We had come to a crossroads. These buildings had been neglected for so long that something just had to be done, and that's why we got the appropriation."

## Heart Fund Campaign Kicks-Off

The Lancaster Chapter of the American Heart Association announces its 1975 Heart Fund Kick-off Breakfast to be held at the Lancaster Hilton Inn on Tuesday, January 7, 1975 from 7:30 a.m. to 9:00 a.m.

The Keynote speaker will be Mr. J. Franklin Smith, president of Pennsylvania Electric Company and the 1975 State Heart Fund Chairman. As chairman, his major responsibilities are as a motivator and communicator.

Under Mr. Smith's

leadership, the 1975 Heart Fund Drive in Pennsylvania has two primary objectives: to increase the amount of funds available to support and expand the Association programs . . . and to involve more people in the Association's effort to reduce disability and premature death from cardiovascular diseases.

The breakfast is open to all Lancaster Countians interested in learning more about the Lancaster Chapter's programs to reduce premature death and disability due to heart disease. In order to continue the expansion of the free community service programs, a goal of \$92,800 has been set for the 1975 Heart Fund Drive

# Big Dutchman. Controlled POULTRY CAGE Systems



Big Dutchman cage systems are the "standard" by which all others are measured. So why not start your cage shopping with the No. 1 company in the field.

We can provide "all" the components that make up a complete cage system and therefore are able to guarantee reliability, control, cost savings and one-source service.

Contact us for personalized information and service concerning these systems.

- 4 DECK LAYER
- TRI-DECK LAYER
- DOUBLE DECK LAYER
- FLAT DECK LAYER
- TRI-DECK CHICK-EZE
- FLAT DECK CHICK-EZE

SEE US AT THE  
**PA. FARM SHOW**  
SECTION F BOOTH NOS. 694-695  
MAIN EXHIBITION FLOOR

**HERSHEY**  
**EQUIPMENT CO., INC.**  
The Systems Company

PHONE  
354-4576

215 Diller Ave.  
New Holland, Pa.

AUTHORIZED  
**Big Dutchman.**  
DISTRIBUTOR

WHEN IT COMES TO PROTEIN,  
NOTHING BEATS

## ALFALFA

. . . and in the Northeast  
nothing beats

## W L ALFALFAS

WL 305      WL 311  
WL 307      WL 210

- High yielding - excellent stand persistence
- Resistant to Bacterial Wilt and Anthracnose
- Tolerant to Phytophthora, Alfalfa Leaf Hopper and Pea Aphid
- Rapid growing - Dark green color - Fine stems
- Excellent seedling vigor and stand establishment
- Developed by Waterman-Loomis Co., specialized Alfalfa Breeders.

Available at your local seed dealer

## BEACHLEY-HARDY

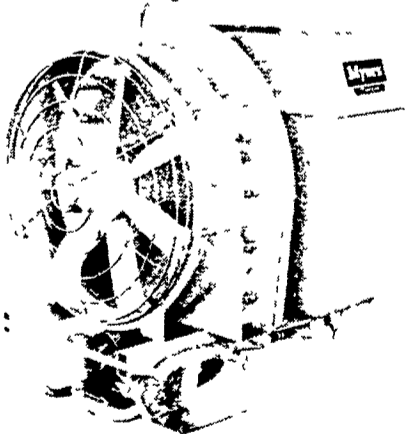
FIELD and GRASS SEEDS

Shiremanstown, Pa. 17091

### Myers' A32TMG

ORCHARDS • ROW CROPS  
TURF • VINEYARDS

. . . with Lightweight, Rust Free Molded Tank



- Compact, 3 point Hitch PTO Air Sprayer
- Multi-purpose chemical applicator for Parks, Golf Courses, General Farming, Orchards and Vineyards
- Multi-use Design Cuts Cost in Half
- Big Piston Pump offers Full Range from 20 to 500 P.S.I. and 12 GPM

VISIT THE MYERS BOOTH  
AT THE FARM SHOW

SEE IT ON DISPLAY

**LESTER A. SINGER**

RONKS, PA

Phone 687-6712

Lancaster County's Only  
Dealer Specializing in  
Sprayer Sales & Service