

# Chambersburg Auction

December 19, 1974

**CATTLE 228.** Compared with last Thursday's market, slaughter steers steady, mostly 50 cents higher. Slaughter cows \$1.50 to \$2.50 higher. Good slaughter steers 35.00-38.50, Standard 30.00-36.00, few Utility 26.25-28.35. Individual Choice slaughter heifer at 37.35, few Good 32.35-34.85, few Standard 31.00-34.00, few Utility 25.25-28.00. Utility & High Dressing Cutter slaughter cows 21.50-23.85, individual at 24.35, Cutters 20.25-22.35, Canners 18.25-20.00, Shells down to 16.00. Individual Good slaughter bullock at 31.10. Individual Yield Grade 1 1780 lbs. slaughter bull at 32.60. Few Medium & Good 400-800 lbs. feeder steers 21.00-29.00. CALVES 370. Vealers

grading Utility to Good \$1 to \$7 lower. Few Prime vealers 56.00-65.00, few Choice 46.00-55.00, individual at 60.00, Good 35.00-46.00, Standard 28.50-38.50, Utility 90-120 lbs. 18.00-28.00, 70-85 lbs. 11.00-18.00. Farm calves, holstein bulls 90-125 lbs. 23.00-36.00. **HOGS 72.** Barrows & Gilts \$1 to \$2 higher. US no. 1-3 210-245 lbs. barrows & gilts 43.00-43.25, No. 2-3 180-260 lbs. 41.75-42.85. Few US No. 1-3 300-400 lbs. sows 38.00-41.00, few No. 2-3 350-400 lbs. 29.25-32.50. Boars 25.50-27.00. **FEEDER PIGS 26.** Lot US No. 1-3 50 lbs. feeder pigs 23.00 per head, Utility 30-50 lbs. 7.00-13.00 per head. **SHEEP 36.** Few Good & Choice 65-80 lbs. wooled slaughter lambs 34.50-38.75, Utility 50-70 lbs. 25.00-30.50. Few Slaughter ewes 12.00-16.00.

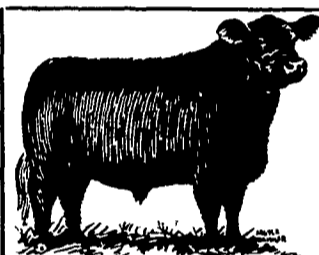
## Weekly St. Louis Cattle Review

Weekly Cattle Review: Receipts 3800, last week 8400, year ago 3300. Compared close last week slaughter steers 1.00-1.50 higher, heifers 1.00 higher, cows 1.00-2.00 lower, bulls 1.00 lower. Small holiday receipts included around 35 percent slaughter steers mostly good and choice 950-

1150 lbs. yield grade 2-4, 18 percent heifers, 15 percent cows and 30 percent feeders. **SLAUGHTER STEERS:** Few lots choice and prime 1050-1150 lbs. yield 3-4 38.50-38.85, choice 950-1150 lbs. yield grade 2-4 37.00-38.50, mixed good and choice 36.00-37.00, good 33.00-36.00, good holsteins 1100-1300 lbs. 30.00-31.25, standard 27.00-29.00, part load good and -choice 1825 lbs. 30.00.

**SLAUGHTER HEIFERS:** Choice 800-1000 lbs. 35.00-36.50, mixed good and choice 34.00-35.00, good 30.00-34.00, standard 25.00-29.00. **COWS:** Late sales utility and commercial 17.00-19.00, few 19.50-20.00, cutter 14.00-17.00, canner 11.00-14.00. **BULLS:** Yield grade 1-2 1100-1600 lbs. 21.00-24.00.

**TRY A CLASSIFIED AD!**



**DANVILLE LIVESTOCK MARKET**  
Old RT. 11  
Danville, Pa.  
Phone (717) 275-2880

SALE EVERY MONDAY 2 P.M.

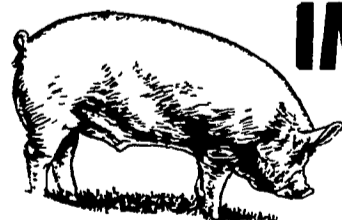
We would be happy to have you as a Customer . . .

**S. K. SHOTZBERGER, INC.**

**LIVESTOCK TRANSPORTATION**

Gene Zwally, President  
Marvin Johns, Secy.-Treasurer

P.O. Box 925, Lancaster, Pa. 17604  
Phone: 393-4641 (day or night)



## IMPORTANT NOTICE

LET US HANDLE YOUR FEEDER PIGS

## NEXT FEEDER PIG SALE TUES., JAN. 7

Feeder pigs consigned to Walter M. Dunlap and Sons must arrive at the stockyards between 7 A.M. and 11 A.M. the day of the sale. Upon arrival they will be inspected by a veterinarian, tagged, and state graded.

The two sales scheduled for January will be held on Tuesday, the 7th, and Tuesday, the 21st, starting at 1 P.M. Consignors wishing to tag their pigs on the farm can get the tags at the state office at the stockyards, not later than 4 P.M. any day preceding the sale, thereby saving 25 cents per pig.

Consign all your feeder pigs to Walter M. Dunlap & Sons where they will be handled by a capable and experienced staff, and for further information call 717-397-5136

**WALTER M. DUNLAP & SONS**  
Capable Service To The Livestock Industry Since 1898

# HOG PRICES

## Lancaster Market

**HOGS:** Barrows and gilts steady to 50 higher. **BARROWS AND GILTS:** US 1 210-250 lb. 44.00-44.60; US 1-3 200-260 lb. 43.25-43.85; US 2-3 250-280 lb. 41.50-42.50.

## Vintage Auction

**Saturday, December 21**  
Hogs 717: Boars and gilts 1.00 higher. US 1-2 200-230 lbs. 43.00-43.50; 13- 200-240 lbs. 42.00-43.00; 2-3 195-270 lbs. 40.00-41.75; 2-4 100-165 lbs. 30.00-32.85. **Sows:** US 1-3 400-550 lbs. 28.25-30.25; 2-3 300-500 lbs. 25.00-28.00 and boars 23.00-25.00.

## New Holland Auction

**Monday, December 23**  
Hogs: 1493: Compared to last week boars and gilts 25 cents to 50 cents higher with spots of 1.00 higher. **US 1-2 200-240 lbs. 43.75-45.00; 1-3 200-250 lbs. 42.75-43.75; 2-3 220-270 lbs. 41.75-42.75; 2-4 160-190 lbs. 40.75-42.75.**

**Sows:** US 1-3 300-550 lbs. 30.00-33.00; 2-3 300-600 lbs. 26.00-30.00 and boars 25.00-39.00.

## St. Louis Auction

**ST. LOUIS HOGS:** 4000 Barrows and gilts 25-50 higher.

**BARROWS AND GILTS:** US 1-2 200-240 lb. 43.25-43.50; US 1-3 200-240 lb. 42.75-43.25.

## Indianapolis Auction

**INDIANAPOLIS LATE HOGS:** 1000

Barrows and gilts very uneven, opening sales 75-1.00 higher, later mostly 50 higher.

**BARROWS AND GILTS:** US 1-2 200-240 lb. 43.50-44.00, 56 hd early 44.25; late sales 43.50; US 1-3 200-250 lb. 43.00-44.00, late 43.00-43.50; Few US 2-3 240-260 lb. 42.50-43.00; Lot US 2-4 285 lb. 41.50.

## Feeder Pig Sale

**Feeder Pig Sale Lancaster Stockyards Lancaster, Penna. December 17, 1974**

**PIGS 1035.** All sales per hundred weight.

US No. 1-2 30-60 lbs. 59.00-69.00; above -60 lbs. 56.00-64.00.

US No. 2 - 30-60 lbs. 52.50-64.00; above -60 lbs. 43.50-50.50.

US No. 2-3 30-60 lbs. 53.00-67.00; above -60 lbs. 33.50-57.00.

US No. 3 30-60 lbs. 46.00-70.00; above -60 lbs. 42.00-48.00.

US Utility 20-60 lbs. 42.50-70.00. 25.00-69.00.

## Peoria Auction

**PEORIA HOGS:** 2500 Barrows and gilts opened 75-1.00 higher, after early rounds mostly steady with Tuesday.

**BARROWS AND GILTS:** US 1-2 200-240 lb. early fully 400 hd 44.00-44.25; After early round 43.00; US 1-3 200-240 lb. 42.50-43.00; US 2-3 230-250 lb. 41.50-42.50; 250-270 lb. 40.00-41.50.

## Philadelphia Produce

Tuesday, December 24

**APPLES**  
Ctn Tray Pack: NJ Red Delicious no grade mark 72-113s 6-6.50.

NY Red Delicious USFcy & Fcy Red Delicious 100's 6.50-7.00 one lot 72-88s few 8.50 Romes 56s few 7.00.

VA Staymans USCombination ExFcy & Fcy 88-

113s 7-7.50.

Ctn Cell Pack: NY McIntosh USFcy 120s few best 7.50.

**MAINE McIntosh** USCombination ExFcy & Fcy 120s 7.00.

**NEW ENGLAND McIntosh** US No. 1 100s 7.00.

Ctn Film Bag 12-3 lb. US No. 1 or Better 2 1/4" & Up:

# Futures Trading

(Closing bids as of Thursday, December 26)

	Chicago Cattle	Chicago Hogs	New York Maine Potatoes	Chicago Fresh Eggs
January				53.10
February	39.70	42.15		51.65
March			3.42	54.10
April	40.90	41.70	3.70	51.00
May			4.33	51.55
June	41.50	44.85		
July		45.65		
August	41.72	44.85		
September				
October	40.95	44.55		
November			4.37	
December		45.55		

Trend — Cattle are Lower, Hogs are Lower, Potatoes are Higher, and Eggs are Lower.  
Markets Provided by Commodity Department Reynolds Securities, Inc.

## Chicago Grain Futures

(Closing bids as of Thursday, December 26)

	Corn	Wheat	Soybeans	Soybean Meal
January			6.97 1/4	132.75
March	3.34	4.50 1/4	7.14 1/4	140.75
May	3.35	4.44 1/2	7.26	147.50
July	3.30 1/2	4.13	7.32 1/2	
September	3.08 1/4	4.20	6.95	154.00
October				153.00
November			6.74	
December	2.82	4.28		155.00

Trend — Corn is Lower, Wheat is Lower, Soybeans are Lower, and Soybean Meal is Lower.  
Markets Provided by Commodity Department Reynolds Securities, Inc.

NJ Red Delicious 4.80. 2.00 ord cond 1.25 ctn mesh  
NEW ENGLAND McIntosh 4.80. sks 15-3 lb 3.50 20-2 lb 3-3.50.  
PENNA Romes 5.40 Red 50-lb sks US No. 1 Size A  
Delicious 5.40 fair appear wshd unless otherwise  
4.20 Staymans 4.20-4.80. stated.  
**BEETS:** Round Whites: LI 2.15-2.25  
NJ 4-5 bu crt bchd 12s 2.25. few 2.10.  
**BRUSSELSPROUTS** MAINE 2.15-2.25 some low  
DEL 1/2 bu ctn loose 5.00. as 2.00.  
**CABBAGE** PENNA unwshd 1.75-2.00.  
**ABOUT STEADY** Round Reds: NY 3.00.  
1 1/4 bu crt & ctn med-lge REPACKED LOCALLY  
Domestic Round Type Green Origin Unknown Baled film  
unless otherwise stated. bag 5-lb sks 50 cents.  
**Savoy Type:** LI fair cond 4-5.00. **STRAWBERRIES**  
No offerings.  
**Dnnish Type:** NY mesh **SWEET POTATOES**  
sks approx. 50-lb med & lge **STEADY**  
3-3.50 mostly 3.25. Ctn approx 50-lb Porto  
**CAULIFLOWER** Rico Type unless otherwise  
LI Long Island crt 12s few stated.  
6.00. DEL no grade mark 6-6.50  
**LEEKs** fair qual cond 3.50.  
NJ 4-5 bu crt & ctn bchd 12s NJ no grade mark Orange  
4.50-5.00. Jersey 6.00 few higher 1/2 bu  
**MUSHROOMS** hmpr Open Face Yellow  
PENNA 4-qt bkt med-lge Jersey 3.25-3.75 sml-med  
3.25-3.50 some best 3.75 sml- 2.25-2.50 1/2 bu ctn Yellow  
med 2.50-2.75. Jersey fair appear 3.00.  
**ONIONS — DRY** **TURNIPS**  
50-lb sks unless otherwise **ABOUT STEADY**  
stated. NJ 25-lb film sks White-  
NY Yellow sml-med 1.50- Topped & washed 2.75.

## U. S. Inspected Livestock Slaughter

Estimated Daily Livestock Slaughter Under Federal Inspections

	CATTLE	HOGS	SHEEP
Week To Date	359,000	692,000	77,000
Same Period Last Week	520,000	1,183,000	106,000
Same Period Last Year	292,000	729,000	87,000