

York Livestock Auction

Thomasville, Pennsylvania
December 18, 1974

CATTLE 94. Compared with last Wednesday's market, slaughter cows grading Utility \$1.75 to \$2 higher. Individual Choice slaughter steer at 38.60, few Good 32.10-37.35, few Standard 32.25-33.85, individual Utility at 27.75. Few Choice 915-1010 lbs. slaughter heifers 33.00-34.50, Couple Good at 26.00, few Standard 21.00-26.75, one Utility 20.50. Utility & High Dressing Cutter slaughter cows 21.35-23.50, few Cutters 19.00-20.75, few Cannors 17.85-19.60. Individual Choice slaughter bullock at 35.60, few Good 30.00-34.60, individual Standard at 28.25, couple Utility 22.00 and 26.00. Few Medium 450-685 lbs. feeder steers 18.50-22.50; few Good 315-575 lbs. feeder heifers 19.00-24.00.

Few Choice vealers 44.00-50.00, few Good 35.00-38.00, individual Standard at 25.00, Utility 90-105 lbs. 20.00-24.00, 70-85 lbs. 17.00-21.00. Farm calves, holstein bulls 90-125 lbs. 23.00-35.00.

HOGS 46. Barrows & Gilts \$1.25 lower. US No. 1-3 210-235 lbs. barrows & gilts 40.00.

Local Grain

Thursday, December 19
These prices are made up of the average prices quoted by a number of participating local feed and grain concerns. It should be noted, however, that not every dealer or broker handles each commodity. All prices are per bushel except ear corn which is per ton.

The average local grain prices quoted Thursday, December 19, 1974, are as follows:

	Bid+	Offered+
Ear Corn		
New	67.00	76.75
Old		
Shelled Corn	3.45	3.68
Oats		
Local	1.71	1.97
Western		2.41
Barley	2.52	2.78
Wheat		
Feed	3.35	3.60
Millers	3.99	

+Bid is the price the dealer will buy from the farmer delivered to the mill. Offered is the price the dealer will sell for at his mill.

Few US No. 1-3 370-425 lbs. sows 37.50-39.00. Few Boars 18.50-21.50.

FEEDER PIGS 18. Lot US No. 1-3 75 lbs. feeder pigs 19.25 per head, Utility 20-30 lbs. 7.50-12.00 per head.

SHEEP 0. No sales on offer.

HOG PRICES

Lancaster Market

HOGS: Barrows and gilts strong to 50 higher.
BARROWS AND GILTS: US 1 210-240 lb. 43.50-43.85; US 1-3 200-260 lb. 42.50-43.00.

Vintage Auction

December 14, 1974

HOGS 768: Compared with last Saturday's market. Barrows & Gilts: steady to 75 cents lower. US No. 1-2 200-235 lbs. 42.00-42.60, No. 1-3 190-250 lbs. 41.25-42.00, No. 2-3 190-275 lbs. 38.00-40.00, few No. 2-4 270-310 lbs. 37.50-38.50, No. 2-4 265-290 lbs. 29.00-35.00. US No. 1-3 300-500 lbs. sows 30.25-32.50, No. 2-3 350-550 lbs. 27.00-30.60.

Lancaster Auction

HOGS: Barrows and gilts strong to 75 higher.

BARROWS AND GILTS: US 1 210-240 lb. 43.75-43.85; US 1-2 200-245 lb. 43.35-43.75; US 2-3 195-270 lb. 42.50-43.50.

Peoria Auction

PEORIA HOGS: 3500. Barrows and gilts opening 25-50 higher.

BARROWS AND GILTS: US 1-2 200-240 lb. 42.00-42.50; US 1-3 200-250 lb. 41.50-42.00.

St. Louis Auction

ST. LOUIS HOGS: 6500. Barrows and gilts generally steady.

BARROWS AND GILTS: US 1-2 200-240 lb. 42.00-42.25; US 1-3 200-240 lb. 41.75-42.00.

Indianapolis Auction

INDIANAPOLIS HOGS: 1500. Barrows and gilts active, mostly 50 higher.

BARROWS AND GILTS: US 1-3 200-250 lb. 42.00-42.50; Few lots US 2-4 240-275 lb. 41.00-42.00; One lot 300 lb. 40.50; One lot US 3-4 330 lb. 39.00.

Feeder Pig Sale

FEEDER PIGS: 1056. Compared to two weeks ago US 1-2 strong to 2.00 higher; US 2 and US 2-3 5.00-10.00 per hundred higher. Slaughter buyers were active with 30 per cent of supply being sold for slaughter.

FEEDER PIGS: US 1-2 38-60 lb. 61.00-69.00, 66-74 lb. 52.00-59.00; US 2 45-52 lb. 59.00-62.00; Couple lots 35-37 lb. 64.00-65.00; US 2-3 32-70 lb. 56.00-61.50; Lot 27 lb. 69.00, 75-107 lb. 42.00-48.00.

SLAUGHTER PIGS: 62 head 22-31 lb. 64.00-70.00; 129 head 33-74 lb. 50.00-61.00; 121 head 34-81 lb. 42.50-49.00.

Leb. Valley Auction

HOGS 289. Barrows & Gilts \$1.25 to \$2 higher. US No. 1-3 190-240 lbs. barrows & gilts 42.85-43.35, No. 2-3 190-255 lbs. 41.60-42.85, No. 2-4 250-285 lbs. 39.10-41.85. US No. 1-3 300-550 lbs. sows 32.50-35.25. Boars 20.00-27.00, few light weights 33.75.

FEEDER PIGS 2. Not enough of any one grade to establish a market.

New Holland Auction

HOGS 1222. Compared with last Monday's market. Barrows & Gilts: \$1.50 to \$1.75 higher. US No. 1-2 200-240 lbs. 43.50-44.50, No. 1-3 200-250 lbs. 41.75-43.50, No. 2-3 220-270 lbs. 41.00-42.00, No. 2-4 160-190 lbs. 40.00-42.00 US No. 1-3 300-600 lbs. sows 27.00-33.00. Boars: 26.00-36.00.

Oklahoma City

Thursday, December 19
Thursday Feeder Cattle Auction

Estimated Receipts 8,500
Same Day Last Week 5,814

Moderately active, feeder cattle and calves generally steady to weak, some sales 50 lower on steers and heifers over 500 lb; majority receipts Mixed Good and Choice 400-850 lb steers and 400-700 lb heifers; fairly large attendance buyers.

FEEDER STEERS: Choice 400-500 lb 26.00-30.00; 500-600 lb 26.50-31.50; 600-800 lb 28.75-31.50, load and short load 732-736 lb 32.20-32.35; 800-938 lb 28.00-31.25; Mixed Good and Choice 350-500 lb 23.00-26.00; 500-905 lb 23.00-28.25, largely 25.00-27.50; few Good 350-718 lb 21.00-24.75; small lot Good 396 lb Holstein steer calves at 15.20; Good 765-884 lb Holstein steers 19.25-22.00.

COMPLETE FARM PAINTING

SPRAY-ON AND BRUSH-IN METHODS
For FREE
Estimates Write

**DANIEL S. ESH
(C. RALPH MILLER)**

BOX 351, RD.1,
RONKS, PA. 17572

We would be happy to have you as a Customer . . .

S. K. SHOTZBERGER, INC.

LIVESTOCK TRANSPORTATION

Gene Zwally, President
Marvin Johns, Secy.-Treasurer

P.O. Box 925, Lancaster, Pa. 17604
Phone: 393-4641 (day or night)

Futures Trading

(Closing bids as of Thursday, December 19)

	Chicago Cattle	Chicago Hogs	New York Maine Potatoes	Chicago Fresh Eggs
December	37.60	42.90		56.00
January			3.41	56.20
February	41.15	45.20		55.90
March			3.32	57.35
April	42.35	45.10	3.58	53.55
May			4.20	54.35
June	42.60	48.00		54.40
July		48.45		
August	42.75	47.10		
September				
October	42.50	45.60		
November			4.40	
December		46.25		

Trend — Cattle are Stronger, Hogs are Stronger, Potatoes are Mixed, and Eggs are Lower.

Markets Provided by Commodity Department
Reynolds Securities, Inc.

Chicago Grain Futures

(Closing bids as of Thursday, December 19)

	Corn	Wheat	Soybeans	Soybean Meal
December	3.53	4.65		159.50
January 1975			7.54	150.75
March	3.57½	4.71½	7.71	156.75
May	3.58	4.68½	7.79½	162.00
July	3.56½	4.29¾	7.86	166.75
September	3.34½	4.35	7.42	170.00
October				161.00
November			7.13	
December	2.97¾	4.45		161.00

Trend — Corn is Mixed, Wheat is Mixed, Soybeans are Higher, and Soybean Meal is Lower.

Markets Provided by Commodity Department
Reynolds Securities, Inc.

FEEDER HEIFERS: Choice 325-500 lb. 20.75-22.80; 500-725 lb. 21.50-24.50, part load 647 lb fleshy heifers at 26.60; Mixed Good and Choice 325-500 lb 18.00-20.00; 500-700 lb 20.25-21.75; few Good 400-767 lb 16.00-18.25.

FOR THE WEEK: Compared to late last week: Trading on feeder cattle over 500 lb very uneven from day to day with closing prices near steady; feeder cattle under 500 lb under pressure and 1.00-2.00 lower; slaughter cows in good demand and 75-1.25 higher; slaughter bulls generally steady. Salable receipts near 22,000 head compared to 19,322 last week and 6,594 the comparable week a year ago. Cows comprised 14 percent cattle receipts; feeders 83 percent of the total.

New Holland Horse Auction

Monday, December 16
Reported receipts of 368 head of horses, mules and ponies. Market steady with last week.

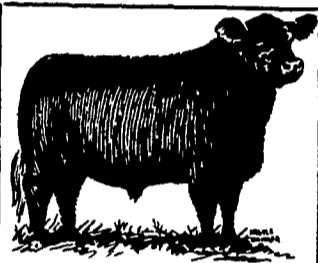
Load of Tennessee riding horses 190-260 and Tennessee driving horses 260-800. Load of driving horses from Ohio 195-290.

Local work horses \$50-525; mules 150-180; better horses 245-325, driving horses 145-250; riding horses 150-210; lightweight killers 12-16; heavyweight killers 18-20; mare ponies 5-20; colts 5-18; geldings 5-15 and larger ponies 40-65.

U. S. Inspected Livestock Slaughter

Estimated Daily Livestock Slaughter Under Federal Inspections

	CATTLE	HOGS	SHEEP
Week to Date	526,000	1,151,000	126,000
Same Period Last Week	553,000	1,274,000	118,000
Same Period Last Year	452,000	1,200,000	112,000



DANVILLE LIVESTOCK MARKET

Old RT. 11
Danville, Pa.
Phone (717) 275-2880

SALE EVERY MONDAY 2 P.M.

HAY & STRAW SALE

EVERY WEDNESDAY AT 12 NOON

NO SALE WEEK OF CHRISTMAS
Canned Goods of Fruits & Vegetables will be sold by the case starting Jan 1st
Also Selling at Jan. 1st Sale — 2 Flatbody Trucks - '65 Ford and '56 Ford.

PAUL Z. MARTIN SALES STABLES
2 miles East of Intercourse
Sale managed by Harvey Z. Martin



A Blessed Christmas...

LET US REJOICE ANEW IN THE SHINING WONDER OF CHRISTMAS . . . MAY THE PEACE AND HOPE AND LOVE OF THIS HOLY SEASON BE WITH US ALWAYS

P. L. ROHRER & BRO., INC.

Smoketown, Pa.

717-299-2571