

HOG PRICES

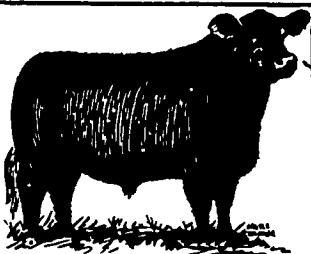
Lancaster Market

HOGS: Barrows and gilts steady to weak.
BARROWS AND GILTS:
 US 1 210-240 lb. 42.00-42.60;
 US 1-2 200-245 lb. 41.60-42.00;
 US 2-3 200-250 lb. 41.00-41.50;
 Couple lots 270-280 lb. 38.50.

Vintage Auction

Saturday, Dec. 7
 HOGS 722. Barrows and Gilts mostly steady, spots 25 cents lower.

US 1-2 200-240 lbs. 42.35-42.75; 1-3 200-255 lbs. 42-42.50; 2-3 190-265 lbs. 41.25-42.25; 2-4 250-270 lbs. 35-36.50; few 2-4 170-180 lbs. 35.
 Sows: 1-3 250-400 lbs. 31.50-32.75; individual 35.75; 2-3 370-530 lbs. 28.50-31.50.
 Boars: 23-28, few light-



DANVILLE LIVESTOCK MARKET

Old RT. 11
 Danville, Pa.
 Phone (717) 275-2880

SALE EVERY MONDAY 2 P.M.

weights 34.75-35.
Wednesday, Dec. 11
 HOGS: 550 - Barrows and Gilts 1.00 to 1.50 higher.
 US 1-2 200-235 lbs. 42.50-43; 1-3 190-250 lbs. 42-42.50.
 Sows: 1-3 300-500 lbs. 30-33.
 Boars: 120-230 lbs. 32-35.

Lancaster Auction

HOGS: Barrows and gilts 50-75 higher.
BARROWS AND GILTS:
 US 1 210-235 lb. 43.50-43.85;
 US 1-2 200-245 lb. 42.00-42.75;
 US 2-3 245-270 lb. 41.75-42.00.

Leb. Valley Auction

HOGS 387. Barrows & Gilts 50 cents to 75 cents higher.
US No. 1-3 190-245 lbs. barrows & gilts 42.10-42.60, No. 2-3 190-255 lbs. 41.60-42.25, No. 2-4 170-190 lbs. 39.75-40.75. US No. 1-3 300-500 lbs. sows 32.00-36.25. Boars 20.00-25.75, few light weights to 33.25.

FEEDER PIGS 8. Few US No. 1-3 45-50 lbs. feeder pigs 17.00-18.50 per

New Holland Auction

Monday, Dec. 9
 HOGS 489 - Barrows and Gilts 75 to 1.25 lower.
 US 1-2 200-240 lbs. 41.75-43; 1-3 200-250 lbs. 41-41.75; 2-3 220-270 lbs. 40-41; 2-4 160-190 lbs. 36.50-41.
 Sows: 1-3 300-575 lbs. 31-34; 2-3 300-600 lbs. 28-31.50.
 Boars: 24-35.50.

Peoria Auction

PEORIA HOGS: 3500. Barrows and gilts opening steady to 25 lower.
BARROWS AND GILTS:
 US 1-2 200-240 41.50-42.00.

St. Louis Auction

ST. LOUIS HOGS: 5500. Barrows and gilts mostly steady, few early sales 25 lower.
BARROWS AND GILTS:
 150 head US1 210-220 42.00; US 1-2 200-240 41.50-41.75; US 1-3 200-240 41.00-41.50.

Indianapolis Auction

INDIANAPOLIS HOGS: 1500. Barrows and gilts moderately active, steady to 25 lower.
BARROWS AND GILTS:
 US 1-3 200-260 41.50-42.00; US 2-4 240-285 41.00-41.75.

(Editor's Note) The following is a partial listing of those markets and auctions that will be closing for the Holiday vacations. All the markets could not be contacted - for further information we suggest that you check with markets before sale times.

There will be no sale at the Hat and Gavel Auction located North of Lititz along Rt. 501 the week of Christmas.

No hay and straw sale will be conducted at the Paul Z. Martin Sale Barn the week of Christmas.

There will be no Cattle sale at the Vintage Sales Stables on Tuesday, December 24th and no Hog Sale on Wednesday, December 25th.

Vintage will conduct their sale as normal on Tuesday, December 31st and Wednesday, January 1st.

There will be no Lancaster Market on Wednesday, December 25th or January 1st.

New Holland Sales Stables will not have their Dairy Sale on Wednesday, December 25th but will have a sale on January 1st.

New York Dressed Meats

December 12, 1974
 Daily Distributive - less than carlot meat trade: Compared with Wednesday - prices mostly steady for all fresh meat classes and quotations unchanged carcass beef, veal, calf, and lamb along with related primal wholesale cuts. Pork loins continue weak and other listed pork cuts steady.
 Outlet for meat improved this session and though purchases holding conservative, retail buyers active in all divisions.
 Quotations unchanged from Wednesday for beef, veal, calf, lamb and pork cuts.

Oklahoma City

Thursday, Dec. 12
 Estimated Receipts 6,000 Same Day Last Week 9,648
 Moderately active, feeder cattle and calves generally steady, instances stronger; majority receipts mixed Good and Choice and Choice 350-850 lb. steers and 300-650 lb. Heifers; fairly large attendance buyers.

FEEDER STEERS:
 Choice, few Prime, 300-500 lb. 29.75-32.50, load 435 lb. thin at 34.45; 500-700 lb. 28.50-30.80; 700-1021 lb. 30.00-31.70; Mixed Good and Choice 300-500 lb. 23.75-28.00; 500-825 lb. 25.00-28.75; Good 300-665 lb. 21.50-24.50. Good 527-729 lb. Holstein Steers 17.75-21.80, part load 912 lb. at 23.00.

FEEDER HEIFERS:
 Choice, few Prime 300-500 lb. 22.00-23.30; 500-700 lb. 22.75-25.30; Mixed Good and Choice 300-500 lb. 19.25-22.00; few 500-650 lb. 19.75-22.00; few Good 340-550 lb. 17.00-19.00.

Local Grain

Thursday, December 12
 These prices are made up of the average prices quoted by a number of participating

U. S. Inspected Livestock Slaughter

Estimated Daily Livestock Slaughter Under Federal Inspections

	CATTLE	HOGS	SHEEP
Week to Date	531,000	1,219,000	111,000
Same Period Last Week	518,000	1,287,000	124,000
Same Period Last Year	487,000	1,165,000	119,000

Futures Trading

(Closing bids as of Thursday, December 12)

	Chicago Cattle	Chicago Hogs	New York Maine Potatoes	Chicago Fresh Eggs
December	38.40	42.27		56.75
January				58.00
February	42.40	45.80		57.50
March			3.57	60.50
April	42.90	45.05	3.86	55.00
May			4.56	55.85
June	43.45	48.47		56.50
July		48.70		
August	43.40	47.25		
September				
October	43.35	46.80		
November			4.40	

December
 Trend — Cattle are Weaker, Hogs are Weaker, Potatoes are Weaker, and Eggs are Weaker.
 Markets Provided by Commodity Department Reynolds Securities, Inc.

Chicago Grain Futures

(Closing bids as of Thursday, December 12)

	Corn	Wheat	Soybeans	Soybean Meal
December	3.59	4.67		157.00
January 1975			7.40	164.50
March	3.65½	4.82	7.56	171.00
May	3.68	4.84½	7.69½	176.00
July	3.66½	4.48	7.76	180.00
September	3.47½	4.55	7.40	183.00
October				
November			7.12	
December	3.08½	4.65		

Trend — Corn is Stronger, Wheat is Stronger, Soybeans are Stronger, and Soybean Meal is Stronger.
 Markets Provided by Commodity Department Reynolds Securities, Inc.

Peoria Cattle

Thursday, December 12
 Cattle receipts this week 7000.

Compared with last week, slaughter steers steady to 50 higher. Slaughter heifers strong to 50 higher. Cows weak to 50 lower. Bulls steady to strong. Receipts about 70 percent slaughter steers, 20 percent slaughter heifers and the balance cows.

SLAUGHTER STEERS:
 Choice and Prime 1150-1260 lbs. yield grade 3-4, 37.00-38.50, late 37.50-38.50; load 39.00; couple loads 1390-1455 lbs. yield grade 4-5, 34.00-35.50. Choice 950-1250 lbs. yield grade 2-4, 36.50-38.00, late 37.50-38.00. Mixed Good and Choice 900-1300 lbs. 35.00-37.50. Good 32.50-35.00. Few Standard and Good Holsteins 32.00-33.00, few Good 34.00.

SLAUGHTER HEIFERS:
 Choice and Prime 900-1050 lbs. yield grade 3-4, 36.50-37.50; half load 38.00. Choice 800-1000 lbs. yield grade 2-4, 35.00-37.50; late 35.50-37.50. Mixed Good and Choice 750-1100 lbs. 32.50-35.50. Good 30.00-32.50.

COWS: Utility and Commercial 14.50-17.00. Cutter 12.00-15.00. Canner 10.00-12.00.

BULLS: Yield grade 1-2, 1100-1700 lbs. 21.00-25.25; few yield grade 1, 1650-2000 lbs. 96 00-96 75

local feed and grain concerns. It should be noted, however, that not every dealer or broker handles each commodity. All prices are per bushel except ear corn which is per ton.
 The average local grain prices quoted Thursday, December 12, 1974, are as follows:

	+Bid Offered+	
Ear Corn		
New	63.75	73.00
Old		
Shelled Corn	3.43	3.64
Oats		
Local	1.90	2.10
Western		2.43
Barley	2.52	2.75
Wheat		
Feed	3.25	3.75
Millers	4.06	

+Bid is the price the dealer will buy from the farmer delivered to the mill. Offered is the price the dealer will sell for at his mill.

HAY & STRAW SALE EVERY WEDNESDAY AT 12 NOON

PAUL Z. MARTIN SALES STABLES
 2 miles East of Intercourse
 Sale managed by Harvey Z. Martin

HOG PRODUCERS!

Get Top Price for Your Hogs at New Holland



Sold in sorted lots the auction way. See them weighed and sold and pick up your check.

SALE EVERY MONDAY 9:00 A.M.

NEW HOLLAND SALES STABLES, INC.

Phone 717-354-4341
 Daily Market Report Phone 717-354-7288
 Abe Diffenbach, Manager

IMPORTANT NOTICE LET US HANDLE YOUR FEEDER PIGS NEXT FEEDER PIG SALE TUES., DEC. 17

As a result of increased receipts and popular demand on the part of both buyers and seller, Bi-monthly Feeder Pig Sales will be held at the Lancaster Stockyards.

Feeder pigs consigned to Walter M. Dunlap and Sons must arrive at the stockyards between 7 A.M. and 11 A.M. the day of the sale. Upon arrival they will be inspected by a veterinarian, tagged, and state graded.

The two sales scheduled for December will be held on Tuesday, the 3rd, and Tuesday, the 17th, starting at 1 P.M. Consignors wishing to tag their pigs on the farm can get the tags at the state office at the stockyards, not later than 4 P.M. any day preceding the sale, thereby saving 25 cents per pig.

Consign all your feeder pigs to Walter M. Dunlap & Sons where they will be handled by a capable and experienced staff, and for further information call 717-397-5136.

WALTER M. DUNLAP & SONS

Capable Service To The Livestock Industry Since 1898