

Committee Proposes U.S. Horse Count

A complete study of the U.S. horse industry and a count of horses of the nation was recommended by the National Horse Industry Advisory Committee in a recent meeting at the U.S. Department of Agriculture (USDA). Under Secretary J. Phil Campbell is chairman of the committee and Frederick Van Lennep, Lexington, Ky., is co-chairman.

The Regulatory Work Group of the committee recommended:

—Relocation of USDA's Clifton, N.J., quarantine facility to a better site.

—USDA continuation of efforts to get equitable reciprocity regarding export

and import of equine stock with Australia and New Zealand.

—A permanent identification system for all U.S. horses, since accurate health certification and efficient disease prevention programs involving testing, vaccination, and/or isolation of horses are not practical otherwise.

—More USDA information through the Extension Service, to be given to 4-H and other clubs and all horse industry and other publications, on equine infectious anemia (EIA), and the need to give the Coggins (blood sample) test for EIA to all horses, donkeys, zebras, and other equidae.

The Research Work Group said the two major priorities for horse industry research should be: (1) biological management (housing, breeding, feeding and waste disposal) and (2) respiratory diseases. The group also supports efforts to channel more federal funds for animal research to schools of veterinary medicine and expanded USDA educational service to the horse industry.

The Trails Sub-Group on Lane Use recommended: USDA aid to encourage the public to make multiple use of the 91,000-mile national trails system, to assist in development of new trails, to provide horse camp facilities in the system, to review the system regularly for obsolete or unneeded trails, and to index all equestrian trails in the nation.

The Urban Sub-Group on Land Use suggested that it should be recognized that lack of suitable trails and riding areas is a problem of rural communities as well as urban. The group also said there is need to develop a method of communication among multi-users of trails (back-packers, motorcyclists, and others) including publication of pamphlets on etiquette, self-discipline, and consideration of the rights of all users.

Stretch Wool Now Possible

Wool fabrics with comfortable two-way stretch can be easily made by a new chemical treatment recently developed by the U.S. Department of Agriculture (USDA).

This process gives ordinary woven wool and wool-blend fabrics the desirable stretch properties that have made the synthetic double-knits so popular.

Tests by the Western Regional Research Center, of USDA's Agricultural Research Service, here, show that the treated fabrics can have up to 20 percent more stretch than ordinary woven fabrics. This compares very favorably to the stretch in double-knits - about 10 to 25 percent. Unlike the stretch in ordinary woven material, this stretch is two-way; both length and width give.

The process for producing stretch wools and wool blend involves soaking the fabric in a hot bath of ethylene glycol. This chemical is the principal ingredient in antifreeze and one of the components in most polyester fibers. Cost estimates run less than five cents per pound of treated fabric.

The treatment is variable

so it should be easily integrated into today's manufacturing techniques. The fabric can be treated for 60 seconds at 285 degrees F., all the way down to 10 seconds at 320 degrees F. The longer treatment time at the lower temperature will require less precision during manufacture.

Treatment of woolen or worsted fabric can be continuous process immediately following weaving or at any time after the fibers are woven.

After the dipping in the chemical bath, the material is removed and run through a cold water bath, rinsed and dried.

Dr. William L. Wasley and Dr. Allen G. Pittman, developers of the new process, say that the treated wools have slightly better wrinkle recovery than untreated woven fabric. Also the treated fabric is more resistant to abrasion than untreated fabric.

An additional benefit of the new process is the increased rate of dyeing. Coloring time is cut by 20 to 50 percent.

Even after 10 washings and dryings, the treated fabric is just as stretchable and new looking as ever.

50-50 Cost for Seedlings Offered

Landowners of Lancaster County are reminded that it is time to plan for tree planting to be done in the spring of 1975. The Glatfelter Pulp Wood Company, Spring Grove, Pennsylvania, will share, on a 50-50 basis, the cost of seedlings with interested landowners. Since the inception of the Company program in 1951, nearly 15 million seedlings have been furnished to landowners in these 13 southcentral Pennsylvania counties: Adams, Berks, Chester, Cumberland, Dauphin, Franklin, Fulton, Juniata, Lancaster, Lebanon, Perry, Schuylkill, and York.

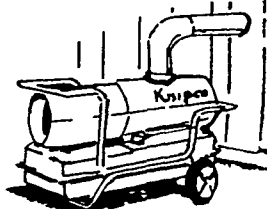
Tree seedlings available this year under the Glatfelter program are white pine, red pine, Austrian pine, Virginia pine, Norway spruce, white spruce, European larch, Japanese larch, black locust, and European alder. Orders are filled on a first-come, first-served basis so it is important to get orders in

early. All seedlings are furnished by the Pennsylvania Department of Environmental Resources. The Glatfelter Company imposes no restrictions of any kind, but landowners planting these trees must comply with state regulations regarding these trees. For example, they may not be used for Christmas trees, decorative or ornamental uses, or for windbreakers. Minimum order acceptable is for 1,000 seedlings, which will plant 1½ acres. All trees become the property of the landowners who may cut them at a future date for any wood product.

If you are a landowner who is planning to plant tree seedlings in 1975, act now! For information about placing your order, see your local County Agent, your Bureau of Forestry District Office or write directly to The Glatfelter Pulp Wood Company, Spring Grove, Pennsylvania, 17362.

Knipco brings the Sun inside...

- to keep you toasty warm on those cold winter days inside and out
 - to heat your equipment for fast untroubled starts
 - to keep livestock happy and warm
 - to thaw frozen pipes and a hundred other reasons
- How? With Knipco reliable portable heater
Call us today or better yet, stop in and see how Knipco brings the SUN inside



Ask about our newest vented Knipco heater model FV125S

STOLTZFUS FARM SERVICE

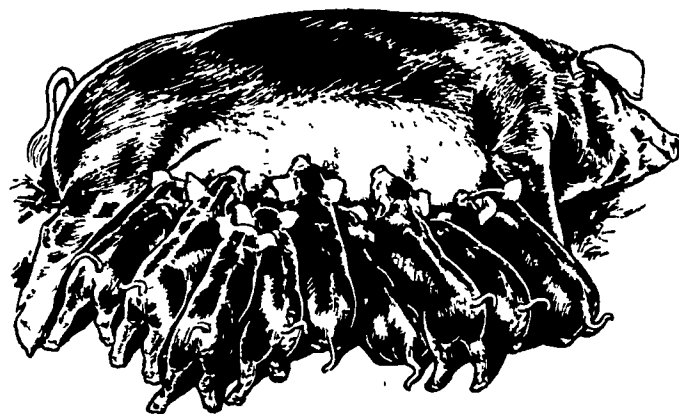
Route #1
Cockranville, Pa 19330

Fast parts and service!

Fire Escape Plan

Heating systems in homes run hard during the winter months. It is a good practice to take a little time every few weeks and review your family's plan for emergency escape in the event of fire. If you don't have a plan, devise

one, and stage some practice drills, urges the Extension Service Education Safety and Emergency Preparedness Committee of The Pennsylvania State University.



Get big litters of husky pigs... Feed Purina Sow Chow

A sow is a pig factory. She has the big job of producing and nursing two litters of pigs every year.

Like any other factory, she has to have raw ingredients to produce the products (pigs) and maintain the factory (her own body). If she doesn't get proper nutrition, she may actually resorb some pigs into her system, causing you to lose pigs you will never even see; or she may farrow weak, unthrifty litters.

Purina Sow Chow has what it takes to help the sow keep her own body, farrow big litters and have plenty of milk to start them right. Purina Sow Chow is available as a supplement to your grain or as a complete sow ration.

Ask us for Purina Sow Chow soon.

Wenger's Feed Mill Inc.

Ph: 367-1195
Rheems

James High & Sons

Ph: 354-0301
Gordonville

John B. Kurtz

Ph: 354-9251
R.D.3, Ephrata

West Willow Farmers Assn., Inc.

Ph: 464-3431
West Willow

John J. Hess, II, Inc.

Ph: 442-4632
Paradise

Ira B. Landis

Ph: 665-3248
Box 276, Manheim RD3

McCracken's Feed Mill, Inc.

2 New Charlotte St., Manheim
Ph: 717-665-2186

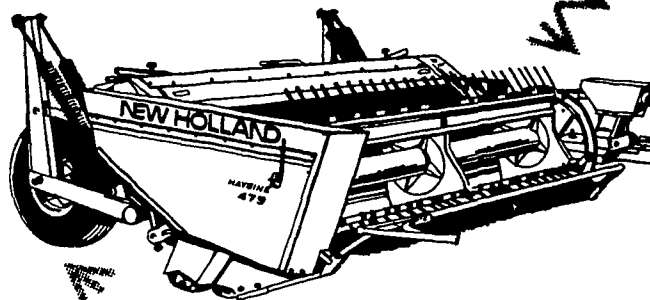


COME n SEE

SERV NEW HOLLAND

MOWER-CONDITIONER

INTERMESHING RUBBER ROLLS



Nine-foot Model 479 does the big jobs fast. Full lateral flotation lets the header hug the ground closely. Full-width, intermeshing, chevron rubber rolls give uniform conditioning. An adjustable reel picks up lodged crops. The sicklebar moves 1,632 strokes per minute for fast, clean cutting. We'll be glad to demonstrate... phone today and make arrangements.

CONVENIENT TERMS TO FIT YOUR BUDGET!!

A.B.C. Groff, Inc.

110 S Railroad Ave.
New Holland
354-4191

Roy A. Brubaker

700 Woodcrest Ave
Lititz, Pa.
626-7766

L. H. Brubaker

350 Strasburg Pike
Lancaster
397-5179

C. E. Wiley & Son, Inc.

101 S Lime St
Quarryville
786-2895

Now! APPLY ANHYDROUS AMMONIA ON CORN FOR '74

P. & K. can also be applied this Fall AVAILABLE

CUSTOM APPLIED OR RENTAL SPREADERS

Top Dress Alfalfa

for Better Over Wintering Qualities

Alfalfa Premium 0-12-34

contains Mg., Sulpher

0-15-30, 0-18-36, 0-26-26 also available

BULK BLENDS

MASTER FARMER

ANHYDROUS AMMONIA

ORGANIC PLANT FOOD CO.

2313 Norm Rd., Lancaster, Pa. Ph. 397-5152