

HOG PRICES

Lancaster Market

HOGS: Barrows and gilts mostly 1.00 higher.
BARROWS AND GILTS: Few US 1 210-240 lb. 42.50-42.85; US 1-2 200-245 lb. 41.50-42.00; US 2-3 200-270 lb. 40.75-41.50.

Vintage Auction

Vintage Sales Stables, Paradise, Penna.
 November 23, 1974

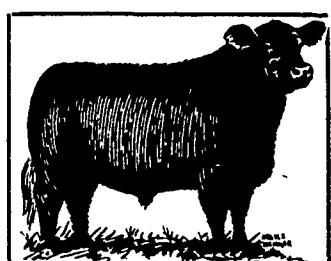
HOGS 919: Compared with last Saturday's market. Barrows & Gilts: \$1.25 to \$2 higher. US No. 1-2 200-240 lbs. 42.25-43.00, No. 1-3 200-250 lbs. 41.25-42.00, No. 2-3 180-270 lbs. 40.00-41.10, No. 2-4 130-180 lbs. 32.00-37.00. US No. 1-3 400-575 lbs. sows 25.50-32.50. Boars 22.00-27.00, one light weight at 37.00.

Vintage Sales Stables, Paradise, Penna.
 November 27, 1974

HOGS 354: Compared with last Wednesday's market; US No. 1-2 200-230 lbs. 41.75-42.10, No. 1-3 190-250 lbs. 40.50-41.75, lot No. 2-4 190-250 lbs. 40.50-41.75, lot No. 2-4 290 lbs. 39.50, No. 2-4 150-174 lbs. 29.50-33.00. US No. 1-3 300-350 lbs. sows 27.00-32.00. One Boar at 24.00.

Lancaster Auction

No market report available due to Thanksgiving holiday.



DANVILLE LIVESTOCK MARKET

Old RT. 11
 Danville, Pa.
 Phone (717) 275-2880

SALE EVERY MONDAY 2 P.M.

Leb. Valley Auction

HOGS 217. Barrows and gilts \$1 to \$1.25 higher. US No. 1-3 195-250 lbs. barrows and gilts 40.85-41.75. US No. 1-3 275-475 lbs. sows 32.25-35.25. Few Boars 24.10-25.00.
FEEDER PIGS 35. US No. 1-3 35-50 lbs. feeder pigs 10.50-15.00 per head.

New Holland Auction

New Holland Sales Stables
 New Holland, Pa.
 November 25, 1974

HOGS 1100: Compared with last Monday's market. Barrows & Gilts: 75 cents to 1.50 higher. US No. 1-2 200-240 lbs. 41.75-42.25, No. 1-3 200-250 lbs. 41.00-41.75, No. 2-3 240-270 lbs. 38.50-41.00, No. 2-4 160-190 lbs. 38.50-41.00. US No. 1-3 300-600 lbs. sows 27.50-33.50. Boars: 26.00-36.00.

Peoria Auction

PEORIA HOGS: 2500 Barrows and gilts under 240 lb. fully steady with early Tuesday; heavier weights strong to 50 higher.

BARROWS AND GILTS: US 1-2 200-240 40.50-41.00; US 1-3 200-250 40.00-40.50; US 2-3 250-270 39.00-40.00.

St. Louis Auction

ST. LOUIS HOGS: 4000 Barrows and Gilts mostly 25 lower.

BARROWS AND GILTS: Around 150 hd US 1-2 200-240 40.50; US 1-3 200-240 40.00-40.25; 170-180 34.00.

New York Dressed Meats

Wednesday, November 27

Prices unchanged; all classes fresh meat in very slow pre-holiday movement. Major exception was carcass lamb which soared 3.00-6.00 higher. Demand for most meat only in fair demand at best.

Steer Beef
 Prime 600-900 lbs. 66.50-67.00; Choice 600-800 65.50-66.50; 800-900 64.50-65.50; Good 500-800 60.00-62.00.

Heifer Beef
 Choice 500-700 lbs. 64.00-66.00.

Calf (Skin Off)
 Choice 150-350 lbs. 60.00-68.00; Good 150-350 50.00-58.00; Standard 150-350 48.00-50.00.

Veal (Skin Off)
 Choice 90-150 lbs. 87.00-95.00; Good 60-90 72.00-80.00; Standard 60-120 62.00-67.00.

Lamb
 Choice and Prime 30-55 88.00-91.00; 55-65 87.00-90.00.
Choice Beef Cuts
 Hinds (steer) 145-190 lbs. 75.00-78.00; Arm Chucks 90-105 56.00-58.00; Ribs (7-ribs) 34-40 87.00-90.00; Loins (trmd) 50-70 94.00-98.00; Rounds (steer) 70-95 76.00-79.00; Full Plates 35.00-36.00; Hinds (heifer) 120-170 73.00-76.00.

Pork Cuts (fresh)
 Loins (regular) 8-14 75.00-77.00; 14-17 74.00-76.00; Picnics (regular) 4-8 46.50-49.00; Boston Butts 4-8 62.00-66.00; Spareribs 3 lbs. down 77.00-81.00; Hams (skinned) 14-17 81.00-83.00; 17-20 77.00-79.00.

Oklahoma City

Wednesday, Nov. 27
 Wednesday Feeder Cattle Auction

Estimated Receipts 1,000 Same Day Last Week 7,313 Trade moderately active, limited pre Thanksgiving holiday supply. Feeder cattle and calves generally steady. Bulk of supply mixed Good and Choice, and Choice 350-600 lb. Feeder steers, 300-550 lb. Feeder heifers. Fewer buyers in attendance.

FEEDER STEERS: Few Choice 391-504 lb. 30.90-32.60; Couple lots 716-769 lb. 29.40-30.70. Mixed Good and Choice 400-600 lb. 23.70-26.70. Good 300-700 lb. including bulls 20.80-26.30.

FEEDER HEIFERS: Few Choice 351-450 lb. 22.80-23.00. Mixed Good and Choice 300-400 lb. 19.80-20.20.

FOR THE WEEK: Compared to last weeks close, limited supply feeder cattle and calves finished strong to 50 cents higher. Slaughter cows mostly 1.00 higher. Slaughter bulls held generally steady. Salable receipts totaled near 5,700 head compared to 24,185 last week and 19,579 same period last year. Feeder cattle made up near 63 percent of total receipts, while cows were near 33 percent of total.

Baltimore

USDA Report

CATTLE 450. Limited sales slaughter steers & heifers steady; other classes being held for AM Auction. Cows 50 cents to mostly \$1 higher; Bulls 50 cents to \$1 lower. **STEERS:** Few Choice yield grade 2-4 1100-1130 lbs. 40.25, Good 1000-1150 lbs. 33.75-36.00, couple High Good 39.00, Standard & Low Good 28.50-33.25, Standard 975-1300 lbs. 24.25-26.25. **HEIFERS:** Lot Good & Choice yield grade 2-3 800 lbs. 37.00, Standard 650-880 lbs. 21.00-25.50. **COWS:** Utility & Commercial 17.50-21.50, Cutter & Low Utility 15.00-17.50, Canner & Low Cutter 12.00-15.00. **BULLS:** Yield Grade 1 1300-1765 lbs. 25.85-28.35; yield grade 2 21.00-25.35. **HOGS 700:** Barrows & Gilts \$1 higher. US No. 1-3 200-230 lbs. 40.25-40.75, No. 2-3 230-250 lbs. 40.00-40.50, No. 2-4 250-270 lbs. 39.25-40.00. **SOWS:** 50 cents higher. US No. 1-3 300-600 lbs. 29.50-31.50.

Futures Trading

(Closing bids as of Thursday, November 28)

	Chicago Cattle	Chicago Hogs	New York Maine Potatoes	Chicago Fresh Eggs
December	39.00	41.75		56.10
January				58.95
February	41.30	44.40		57.85
March			4.02	59.20
April	41.50	43.60	4.40	56.35
May			5.21	56.35
June	42.60	46.25		
July		47.00		
August	42.45	46.00		
October	42.25			
November			4.48	
December				

Trend — Cattle are Lower; Hogs are Higher; Potatoes are Higher; and Eggs are Mixed.

Markets Provided by Commodity Department
 Reynolds Securities, Inc.

Chicago Grain Futures

(Closing bids as of Thursday, November 28)

	Corn	Wheat	Soybeans	Soybean Meal
December	3.58½	4.84½		146.50
January 1975			7.62½	153.50
March	3.69½	5.04	7.77½	160.25
May	3.73½	5.05	7.91	168.75
July	3.75½	4.71	7.97½	171.50
August			7.91½	171.50
September	3.61	4.77	7.50	173.50
December	3.23	4.85		

Trend — Corn is Stronger, Wheat is Lower, Soybeans are Stronger, and Soybean Meal is Stronger.

Markets Provided by Commodity Department
 Reynolds Securities, Inc.

Peoria Cattle

Wednesday, November 27
 Weekly 51

CATTLE: Receipts this week: 3500, Last week: 4800, Year ago: 5100. Compared with last weeks close slaughter steers and heifers closed 50-1.00 higher. Cows strong to 1.00 higher. Bulls scarce mostly steady. Receipts about 70 percent

slaughter steers, 20 percent slaughter heifers, balance mainly cow.

Slaughter steers: Choice and Prime 1100-1250 lbs. 3-4 39.00-40.00, Late 40.00-40.25; Choice 950-1250 2-4 37.50-39.50, Closed 39.00-40.00; Mixed good and choice 900-1300 lbs. 37.00-39.00; Good 34.00-37.00; Standard and Good holsteins 32.50-34.00.

SLAUGHTER HEIFERS: Load Choice and Prime 1000 lbs. 3-4 Early 38.50; Choice 825-1070 lbs. Yield Grade 2-4 36.50-38.00, Late 37.00-38.50; Load 39.00; Mixed Good and Choice 750-1100 lbs. 34.00-37.00.

COWS: Utility and Commercial 15.00-18.00; Few High Dressing Utility 19.00; Cutter 13.00-16.00; Canner 11.00-13.00; Shelly Canner 8.00-11.00.

BULLS 1-2 1100-1600 lbs. 21.00-24.00.

LLOYD H. KREIDER AUCTIONEER and SALES MANAGER

R.D.#1
 New Providence, Pa.
 Phone: 786-3394

We would be happy to have you as a Customer . . .

S. K. SHOTZBERGER, INC.

LIVESTOCK TRANSPORTATION

Gene Zwally, President
 Marvin Johns, Secy-Treasurer
 P.O. Box 925, Lancaster, Pa. 17604
 Phone: 393-4641 (day or night)

IMPORTANT NOTICE

LET US HANDLE YOUR FEEDER PIGS NEXT FEEDER PIG SALE TUES., DEC. 17

As a result of increased receipts and popular demand on the part of both buyers and seller, Bi-monthly Feeder Pig Sales will be held at the Lancaster Stockyards.

Feeder pigs consigned to Walter M. Dunlap and Sons must arrive at the stockyards between 7 A.M. and 11 A.M. the day of the sale. Upon arrival they will be inspected by a veterinarian, tagged, and state graded.

The two sales scheduled for December will be held on Tuesday, the 3rd, and Tuesday, the 17th, starting at 1 P.M. Consignors wishing to tag their pigs on the farm can get the tags at the state office at the stockyards, not later than 4 P.M. any day preceding the sale, thereby saving 25 cents per pig.

Consign all your feeder pigs to Walter M. Dunlap & Sons where they will be handled by a capable and experienced staff, and for further information call 717-397-5136.

WALTER M. DUNLAP & SONS

Capable Service To The Livestock Industry Since 1898