

HOG PRICES

Lancaster Market

HOGS: Barrows and gilts steady to 50 lower, instances 1.00 lower on US 1.

BARROWS AND GILTS: US 1 210-240 lb. 40.00-40.75; US 1-3 195-260 lb. 39.25-39.85.

Vintage Auction

Nov. 16, 1974

HOGS 917. Compared with last Saturday's market; Barrows and Gilts 75 cents to \$1 lower.

BARROWS & GILTS: US No. 1-2 200-245 lbs. 40.75-41.00, No. 1-3 190-240 lbs. 40.00-40.60, No. 2-3 210-260 lbs. 39.85-40.25, No. 2-4 250-285 lbs. 36.00-39.00, No. 2-4 140-185 lbs. 30.00-37.50.

SOWS: US No. 1-3 280-535 lbs. 32.75-34.00, few 270 lbs. at 29.75. Boars 26.00-28.10, few light weights 35.25-37.00.

Nov. 20, 1974

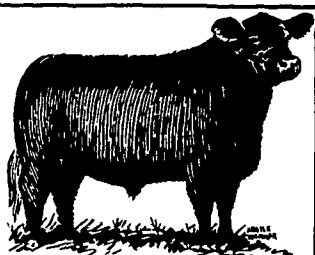
No market report available.

Lancaster Auction

HOGS: Barrows and gilts 1.00-1.25 higher.

BARROWS AND GILTS: Few US 1 210-235 lb. 42.00; US 1-2 200-245 lb. 40.50-41.00; US 2-3 210-280 lb. 39.85-40.50.

TRY A CLASSIFIED AD



DANVILLE LIVESTOCK MARKET

Old RT. 11
Danville, Pa.
Phone (717) 275-2880

SALE EVERY
MONDAY 2 P.M.

Leb. Valley Auction

HOGS 349. Barrows and gilts about steady. US No. 1-3 195-235 lbs. barrows and gilts 39.85-40.35, lot at 40.60, No. 2-3 190-250 lbs. 38.85-39.85. US No. 1-3 300-450 lbs. sows 33.00-35.25, No. 2-3 350-700 lbs. 30.00-32.00. Few Boars 24.00-25.00.

New Holland Auction

HOGS 1466. Compared with last Monday's market; Barrows and Gilts \$1 to \$1.50 lower. BARROWS & GILTS: US No. 1-2 200-240 lbs. 40.25-41.50, No. 1-3 200-250 lbs. 39.50-40.25, No. 2-3 220-275 lbs. 37.50-39.50, No. 2-4 160-190 lbs. 37.50-39.50. SOWS: US No. 1-3 300-600 lbs. 27.00-31.50. BOARS 26.00-36.00.

Peoria Auction

PEORIA HOGS: 3500. Barrows and Gilts opening weak to 25 lower.

BARROWS AND GILTS: US 1-2 200-240 39.50-40.00.

Indianapolis Auction

INDIANAPOLIS HOGS: 1500. Barrows and Gilts active, fully 50 higher.

BARROWS AND GILTS: US 1-2 210-230 40.50-40.75; 26 head 40.75; US 1-3 200-250 40.00-40.50.

St. Louis Auction

ST. LOUIS HOGS: 5300. Barrows and Gilts steady to weak.

BARROWS AND GILTS: US 1-2 210-240 39.75-40.00; US 1-3 200-250 39.25-39.75.

New York Dressed Meats

November 21, 1974

Carcass beef, lamb, calf and veal all moving on the slow side, demand generally poor for all meat items. Most trade members report very little interest due in past to continued liberal federally inspected slaughter of cattle coupled with up-coming holiday next week. Prices generally unchanged for all meats but definite weak undertone prevailed.

Steer Beef

Prime 600-900 lbs. 66.50-67.00; Choice 900-1000 66.50-66.50, 800-900 64.50-65.50; Good 500-800 61.00-63.00.

Heifer Beef

Choice 500-700 lbs. 63.00-65.00.

Calf (Skin Off)

Choice 150-350 lbs. 60.00-68.00; Good 150-350 50.00-58.00; Standard 150-350 48.00-50.00.

Veal (Skin Off)

Choice 90-150 lbs. 87.00-95.00; Good 60-90 72.00-80.00; Standard 60-120 62.00-67.00.

Lamb

Choice and Prime 30-55 83.00-84.00.

Choice Beef Cuts

Hinds (steer) 145-190 lbs. 75.00-78.00; Arm Chunks 90-105 55.00-58.00; Ribs (7-rib) 34-40 86.00-89.00; Loins (trmd) 50-70 95.00-100.00; Rounds (steer) 70-95 75.00-78.00; Full Plates 34.00-35.00; Hinds (Heifer) 120-170 73.00-76.00.

Pork Cuts (Fresh)

Loins (Regular) 8-14 72.00-75.00, 14-17 71.00-74.00; Picnics (Regular) 4-8 45.50-48.00; Boston Butts 4-8 60.00-65.00; Spareribs 3 lbs. down 75.00-79.00; Hams (Skinned) 14-17 76.00-78.00; 17-20 73.00-76.00.

New Holland Horse Auction

Monday, November 18

Reported receipts of 516 head of horse, mules and ponies.

Market steady with last week.

U. S. Inspected Livestock Slaughter

Estimated Daily Livestock Slaughter Under Federal Inspections

	CATTLE	HOGS	SHEEP
Week to Date	530,000	1,215,000	106,000
Same Period Last Week	535,000	1,237,000	112,000
Same Period Last Year	352,000	907,000	105,000

Omaha Cattle

Thursday, November 21
Weekly 51 - Cattle

Compared with the previous weeks close.

Average - Good to Prime slaughter steers and all heifers 75-1.25 higher, mostly 1.00 higher. Standard and low-Good steers steady to 50 cents higher. Cows 2.00-3.00 lower. Bulls weak.

Four day receipts 14,800 as compared 17,800 previous week and 12,800 a year ago. Slaughter steers approximately 26 percent of weeks total, heifers 21 percent, cows little more than 15 percent and feeders 33 percent.

STEERS: Some fifteen loads Choice and Prime 1019-1236 lbs. grade 3-4 38.60-39.00 during week, four loads same grade 1215-1233 lbs. 4 37.50-38.15. Choice 975-1275 lbs. 2-4 37.50-38.50, four loads 1330-1350 lbs. yield grade 3-4 37.25, and one load 1550 lbs. 3-5 35.00. Three loads mostly Choice 1100-1150 lbs. 3 39.00-39.50 for Canadian shipment. Mixed Good and Choice 950-1250 lbs. 36.75-37.50. Good 34.00-36.75. Standard and Low-Good 32.00-34.00.

Average cost slaughter steers first three days 37.45 average weight 1118 lbs. compared 37.02 and 1122 lbs. previous week and 39.39 and 1156 lbs. a year ago.

HEIFERS: Three loads High-Choice and Prime 950-1022 lbs. yield grade 3-4 38.25-38.50, modest volume same grade 932-1108 lbs. 37.60-38.00, three loads 1101 lbs. mainly yield grade 4 37.50. Choice 850-1050 lbs. yield grade 2-4 36.50-37.50. Mixed Good and Choice 750-1000 lbs. 35.50-36.50. Good 33.00-35.50. Standard and low-Good, 31.00-32.50.

COWS: Utility and Commercial 15.00-16.50, a few 17.00. Canner and Cutter 11.00-15.00. Mixed Cutter and low-Utility 15.25-15.50. Shelly Canner 9.00-10.00.

BULLS: Yield grade 1 & 2 1400-1800 lbs. 23.00-25.50.

FEEDERS: Six loads Choice and Prime moderately fleshy 751 lb. heifers 29.50.

Load of Ohio riding horses 140-395.

Load of Tennessee riding horses 150-280.

Local work horses 310; mules 140-250; better horses 240-320; driving horses 150-390; lightweight killers 10-15; heavyweight killers 17-19; mare ponies 15-35; colts 5-20; geldings 15-30 and larger ponies 45-90.

Lancaster Farming, Saturday, Nov. 23, 1974—3

Futures Trading

(Closing bids as of Thursday, November 21)

	Chicago Cattle	Chicago Hogs	New York Maine Potatoes	Chicago Fresh Eggs
December	39.15	40.75		54.50
January				55.50
February	40.65	42.55		54.05
March			3.88	55.90
April	40.95	42.00	4.23	53.95
May			5.12	53.80
June	41.95	44.55		
July		45.35		
August	42.10	43.80		

Trend — Cattle are Lower, Hogs are Lower, Potatoes are Mixed, and Eggs are Lower.

Markets Provided by Commodity Department
Reynolds Securities, Inc.

Chicago Grain Futures

(Closing bids as of Thursday, November 14)

	Corn	Wheat	Soybeans	Soybean Meal
December	3.46½	4.67¼		144.00
January 1975			7.38½	150.40
March	3.56½	4.85¼	7.53½	157.20
May	3.60¼	4.86½	7.66½	163.50
July	3.61	4.54	7.73½	167.10
September	3.49½	4.61½	7.27	170.00

Trend — Corn is Lower, Wheat is Lower, Soybeans are Lower, and Soybean Meal is Lower.

Markets Provided by Commodity Department
Reynolds Securities, Inc.

Oklahoma City

Thursday, November 21
Estimated Receipts 6,800
Same day last week 11,372

Trade moderately active, liberal supply feeder steers and heifers strong to 50 cents, instances 1.00 higher with most strength noted on heifers 500 lb. and over. Majority receipts mixed good and choice and choice 350-700 lb. feeder steers, 300-650 lb., few 700-800 lbs. feeder heifers. Good attendance buyers.

FEEDER STEERS: Lot choice, few Prime 460 lb. 34.00. Couple part loads Choice 388-389 lb. 30.20-32.30, couple small lots stretchy 400-450 lb. 31.00-31.50. Other choice 400-550 lb. 28.75-31.00; 600-800 lb. 28.60-30.10. Mixed good and choice 350-500 lb. 23.50-28.00; 500-700 lb. 26.00-28.00; good 350-600 lb. including bulls 20.00-23.50.

FEEDER HEIFERS: Choice 300-500 lb. 20.25-23.70, mostly 21.00-23.00; 500-700 lb. 22.00-24.80; few large lots 700-800 lb. 24.50-29.50. Mixed good and choice 350-500 lb. 19.25-20.80; 500-650 lb. 19.50-22.30.

FOR THE WEEK: Compared to last week, feeder steers and heifers closed steady to strong after recovering a 1.00-2.00 loss on Monday. Slaughter cows finished weak to 1.00 lower. Slaughter bulls held generally steady with sales diminishing at midweek. Salable receipts totaled near 23,500 head compared to 28,904 last week and 4,044

Peoria Cattle

Thursday, November 21

CATTLE: Receipts this week 4900, compared to last week 4790, and to the 4-day week last year 2924.

Compared with last weeks close, slaughter steers 50-1.25 higher. Slaughter heifers mostly 1.00 higher. Cows 2.00-3.00 lower. Bulls scarce.

Supply about 65 pct. slaughter steers, 20 pct. heifers and the balance mostly cows.

SLAUGHTER STEERS: Near four loads Choice and Prime 1130-1190 lbs. 3-4, 39.50-40.50. Choice 950-1340 lbs. 2-4, 37.50-39.25. Couple loads Choice and Prime 1400-1425 lbs. 4-5, 35.00-36.00. Mixed Good and Choice 900-1300 lbs. 36.25-37.50. Good 34.00-36.50. Standard and Good holsteins 32.50-34.00. Few mostly Good 35.00.

SLAUGHTER HEIFERS: Choice with few Prime 825-1050 lbs. 2-4, 36.50-38.00. Mixed Good and Choice 750-1000 lbs. 34.00-36.50.

COWS: Utility and Commercial 14.00-17.00; early High Dressing Utility 20.00. Cutter 12.00-14.00. Canner 10.00-12.00. Shelly Canner 8.00-10.00.

BULLS: Few 2, 1100-1500 lbs. 20.00-22.00, few 1, 24.00.

same period last year during which the yards were closed Thanksgiving holiday. Feeder cattle comprised near 80 percent total receipts, cows near 19 percent of total.

IMPORTANT NOTICE

LET US HANDLE YOUR FEEDER PIGS

NEXT FEEDER PIG SALE TUES., DEC. 3

As a result of increased receipts and popular demand on the part of both buyers and seller, Bi-monthly Feeder Pig Sales will be held at the Lancaster Stockyards.

Feeder pigs consigned to Walter M. Dunlap and Sons must arrive at the stockyards between 7 A.M. and 11 A.M. the day of the sale. Upon arrival they will be inspected by a veterinarian, tagged, and state graded.

The two sales scheduled for December will be held on Tuesday, the 3rd, and Tuesday, the 17th, starting at 1 P.M. Consignors wishing to tag their pigs on the farm can get the tags at the state office at the stockyards, not later than 4 P.M. any day preceding the sale, thereby saving 25 cents per pig.

Consign all your feeder pigs to Walter M. Dunlap & Sons where they will be handled by a capable and experienced staff, and for further information call 717-397-5136.

WALTER M. DUNLAP & SONS

Capable Service To The Livestock Industry Since 1898